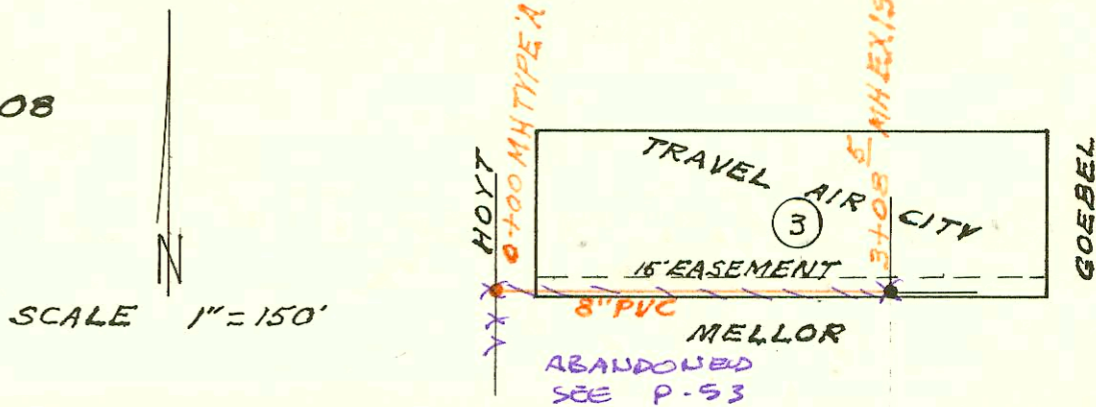


SAN SEWER RELOC FOR BEECH ACFT. CORP.
BUILT BY: LD KNEBLER CONST. CO.
PROJ. N^o 468-76-245-80000-000-000-008
BOOKED 7-7-82 FROM DCD 36

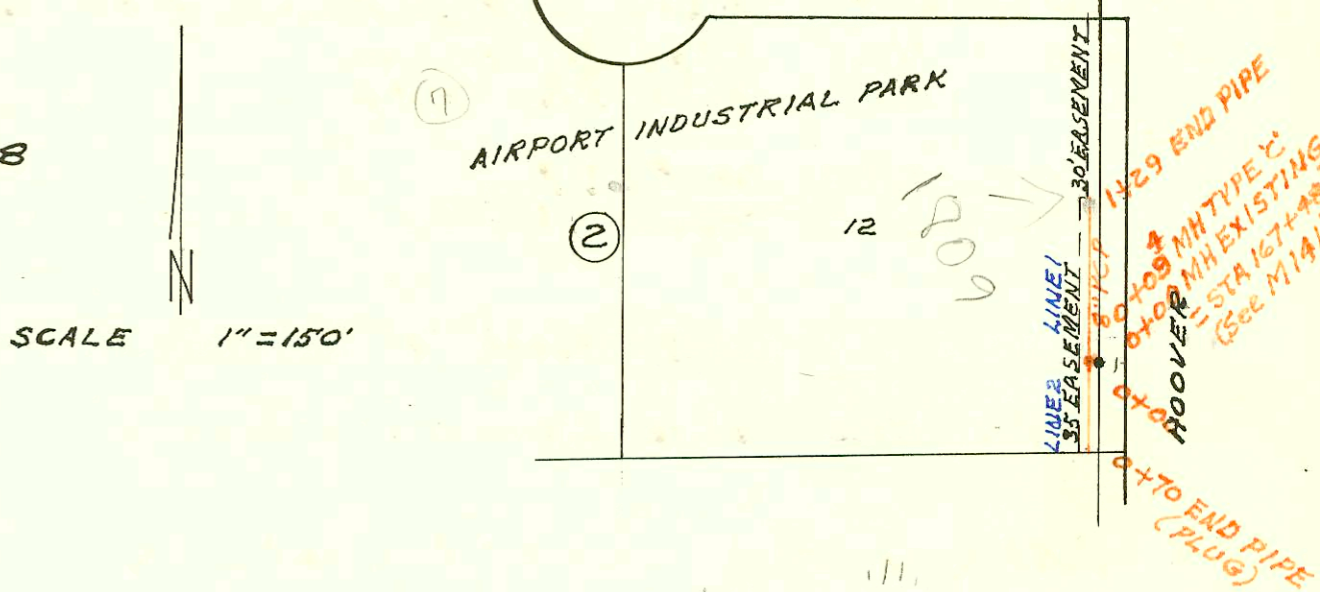
OR Mody



SCALE 1" = 150'

SAN SEWER TO SERVE LOT 12 BLOCK 2
AIRPORT INDUSTRIAL PARK
BUILT BY: MID STATES CONST. CO.
BOOKED 7-9-82 FROM DCD 36
PROJ. N^o 468-76-245-80000-000-000-008

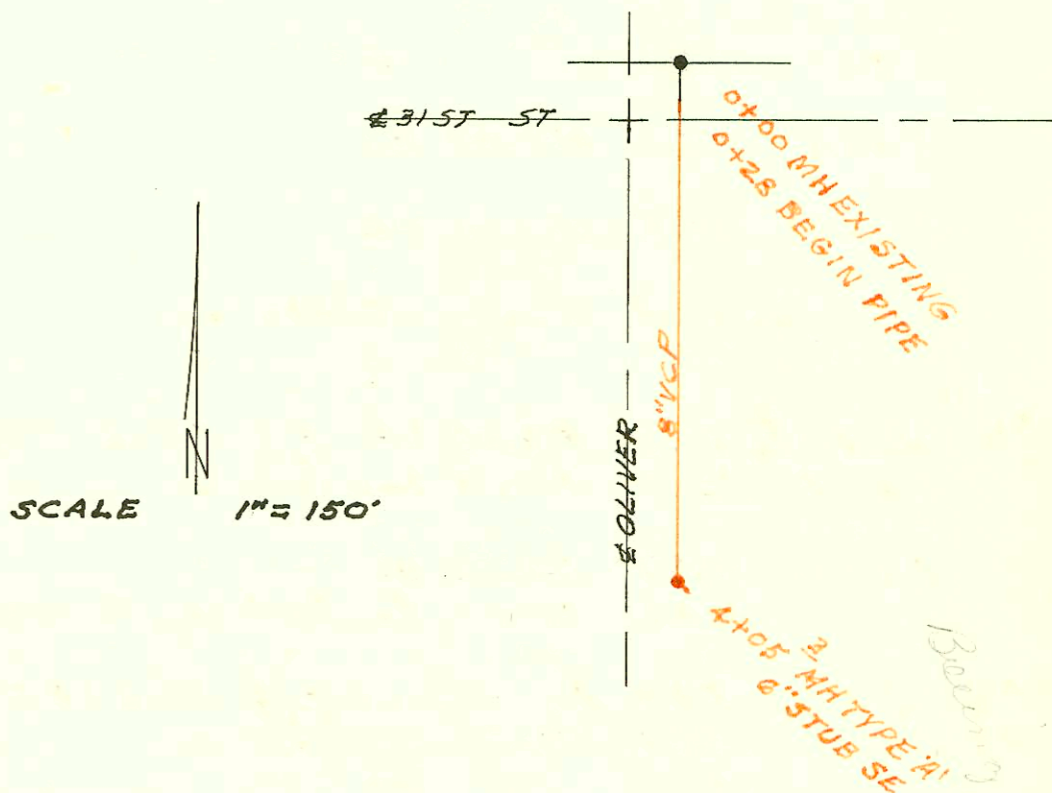
OR Mody *11-7-82*



SCALE 1" = 150'

SAN SEWER FOR BMAC WICHITA
EMPLOYEE ACTIVITY CENTER
BUILT BY: W.B. CARTER CONST. CO.
PROJ. N^o 468-76-245-80000-000-000-008
BOOKED 7-13-82 FROM DCD 36

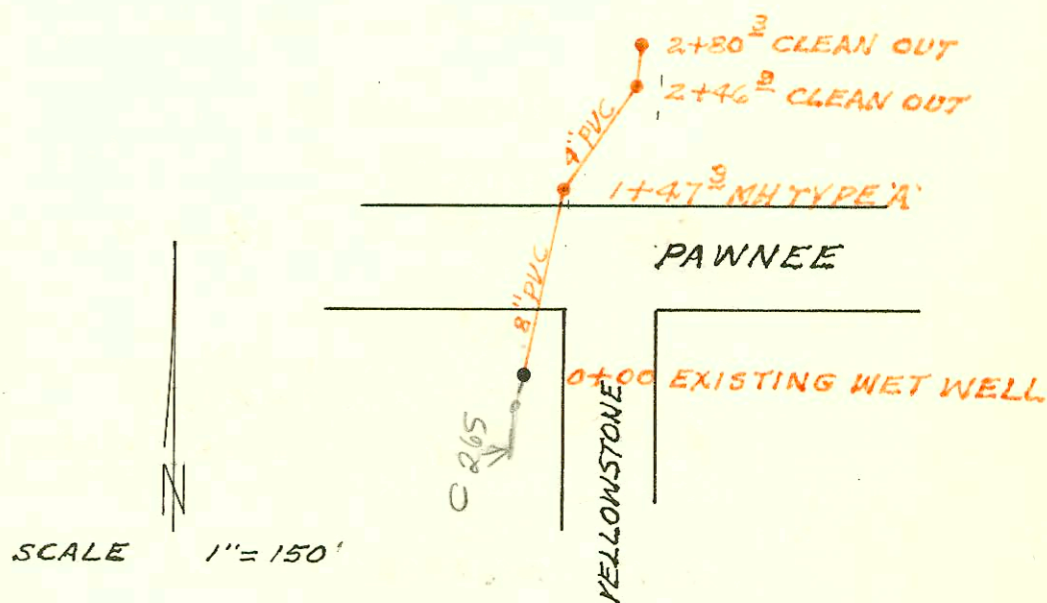
OR Mody *11-7-82*
Country



SCALE 1" = 150'

SAN SEWER FOR PAWNEE PRAIRIE PARK
BUILT BY: MID STATES CONST. CO.
PROJ. N^o 468-76-245-80000-000-000-008
BOOKED 7-14-82 FROM DCD 36

OR Mody *7-1-82*



SCALE 1" = 150'

CONSTRUCTION RECORD						SERVICE RECORD						
STATION	ELEVATION		Depth	MANHOLE	4-INCH "Y" BRANCHES		No. of Permit		House Number		DATE OF PERMITS	
	Ground	Grade			North West	South East	North West	South East	North West	South East	North West	South East
SAN SEWER RELOC FOR BEECH ACFT. CORP.												
0+00	180.3	173.99	6.3	0+00								
1+00	179.7	174.49	5.2									
2+00	180.9	174.99	5.9									
3+00	182.3	175.49	6.5									
	182.6	175.53	7.1	3+08.5								
SAN SEWER TO SERVE LOT 12 BLK 2 AIRPORT INDUSTRIAL PARK												
LIN 1 0+00	110.7	103.00	7.7	0+00 EXISTING								
	111.7	103.09	8.6	0+09.4								
		103.19	8.5									
1+00	111.3	103.59	7.7									
1+29	111.1	103.67	7.4	PLUG								
LIN 2 0+00	111.7	103.19	8.5	0+00=0+09.4 LINE 1	0+43.0		36.25		1809 & 1809		4-16-82	
0+70	110.8	103.40	7.4	PLUG								
SAN SEWER FOR BMAC WICHITA EMP ACT CTR												
0+00	164.8	155.60	9.2	0+00 EXISTING								
0+28	164.8	155.77	9.0	Begin Pipe								
1+00	165.6	156.20	9.4									
2+00	166.1	156.80	9.3									
3+00	165.8	157.40	8.4									
	165.4	158.03	7.4	4+05.3	6" STUB SE		41.0		3300 S 010100		9-22-81	
SAN SEWER FOR PAWNEE PRAIRIE PARK												
0+00	123.0	110.30	12.7	0+00 EXISTING								
1+00	119.4	110.69	8.7									
	119.1	110.88	8.2	1+47.3	4" STUB NE							
SAN SEWER FOR PEPSI COLA BOTTLING CO.												
LIN 1 0+00	88.4	76.56	11.8	0+00 EXISTING								
	88.5	76.98	11.5	0+73								
		77.10	11.4									
1+00		77.14										
	87.8	77.30	10.5	1+27								
		77.88	9.9									
2+00		77.88										
3+00		78.27										
4+00		78.67										
5+00		79.07										
	86.6	79.14	7.5	5+16.2	4" STUB SW							
6+00		79.47										
		79.85		6+26.9								
		79.86		7+07.9								
	85.8	79.87	5.9	7+17.3	6" STUB W							
8+00		80.20										
	85.1	80.44	4.7	8+53.8								
9+00		80.60										
	84.4	80.91	3.4	9+85.4								
		81.07	3.3									
10+00		81.13										