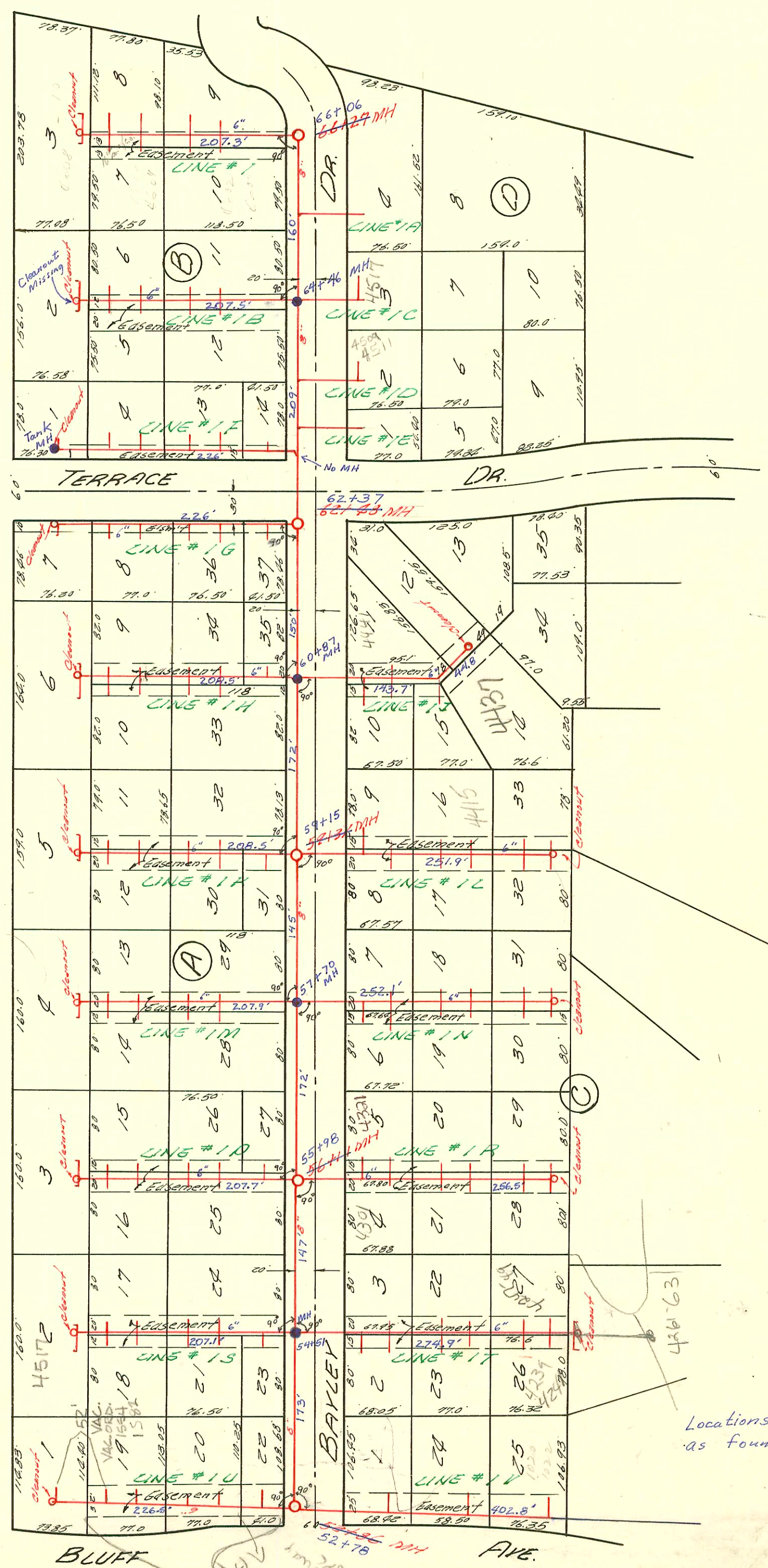


1=100

57.



LINCOLN

Locations and measurements  
as found by Sewer Maint.  
Nov. 1982

# 93-29327-7-4614 E Bayley - 11-16-93 - 4" PVC 40' - Replaced 30' section of line (From House to 6" leader)  
800' - 610' - 4300 E Bayley - 4-20-00 (10' - 4" SCH 40 PVC, (1) SH-AC (1) (OLDSWIRE)

CONSTRUCTION RECORD

SERVICE RECORD

STATION	ELEVATION		Depth	MANHOLE	4-INCH "Y" BRANCHES		No. of Permit		House Number		DATE OF PERMITS	
	Ground	Grade			North West	South East	North West	South East	North West	South East	North West	South East
LINE #1	No informations on grades and dimensions of sewers are available in the plan.											
LINE #1A												
LINE #1B												
LINE #1C												
LINE #1D												
LINE #1E												
LINE #1F												
LINE #1G												
LINE #1H												
LINE #1J												
LINE #1K												
LINE #1L												
LINE #1M												
LINE #1N												
LINE #1P												
LINE #1R												
LINE #1S												
LINE #1T												
LINE #1U												
LINE #1V												
	No informations on "Y's" are available											
	Line #1											
	149.63	143.80	5.8'	52+78								
	151.68	144.61	7.0'	54+51								
	153.72	146.10	7.6'	55+98								
	154.85	148.14	6.7'	57+70								
	155.93	148.77	7.2'	59+15			91-8558-7		4415 E Sep Bayley R		6-7-94	
	157.00	149.73	7.3'	60+87								
	158.77	151.28	7.5'	62+37								
	159.66	152.96	6.7'	64+46								
	160.40	154.25	6.2'	66+06								
	Line #1F											
	2+26	159.06	3.3'	155.73								
	2001-01270-512301-4441 E BAYLEY-Simpletsons-4"SCH40 ITWINCO, 2 Fernco no msmt											
	SWR 2000-02300-4517 E Lincoln 10190-Roto Rooter-4"SCH40, ITWINCO, 1H22, 1 Fernco to Cast Iron at house, 1 Fernco to clay CO Riser only											
	2002-00473-4517 E Bayley-Roto Rooter-2/22/02-4"SCH40 ITWINCO (no msmt)											
	SWR 2000-05402	6-13-00	4301 E Bayley	Clearwater 5/10 APRX MID OF LOT IN REAR								
	SWR 2000-01030	4/27/00	4215 E Lincoln	(Duplex in Rear) - A.D. Mills								
	97-01542	12-29-99	910 S Bluffview	(add to church) 3/28/00-SWR-4"SCH40-ITWINCO, 1-45, 1-6x4 Combo								
	1-45° ELL, 1-6x4 Combo, tied into private swr line. Grease Trap 4" SCH40 3 Twin CO, 4-H45, 2-V45, 1-V22 1/2											
	1-6x4 Y, Tied to private swr line											

84604-06 8. Bayley - 1-5-70 - Al Henning (Sided 150' x 182' no. of 66+27 M.H.) Line 1  
 # 20230 3-4-88 906 Bluffview - Al Henning - 53+08 4241 E Bayley s/o 96-6479-1  
 # 20848 6-13-88 910 Bluffview - Al Henning - (181' N of 52+78) Henning - 510 8' off Main &  
 # 20849 6-13-88 918 Bluffview - Al Henning - (100' N of 52+78) 252' S of MH  
 # 20891 6-13-88 922 Bluffview - Al Henning (72' N of MH 52+78) 4239 E Bayley s/o 96-6478-1  
 # 20855 6-13-88 914 Bluffview - Al Henning - (148' N of MH 52+78) Henning - 4" clay 50 8' off Main  
 # 21571 6-27-88 904 Bluffview - Henning - 510 1' S. of C.O. 2165' S. of MH  
 91-8558-701 - 6-7-94 4415 - 4" x 2' 40 - replaced all but 1' of line. 4415 E Bayley