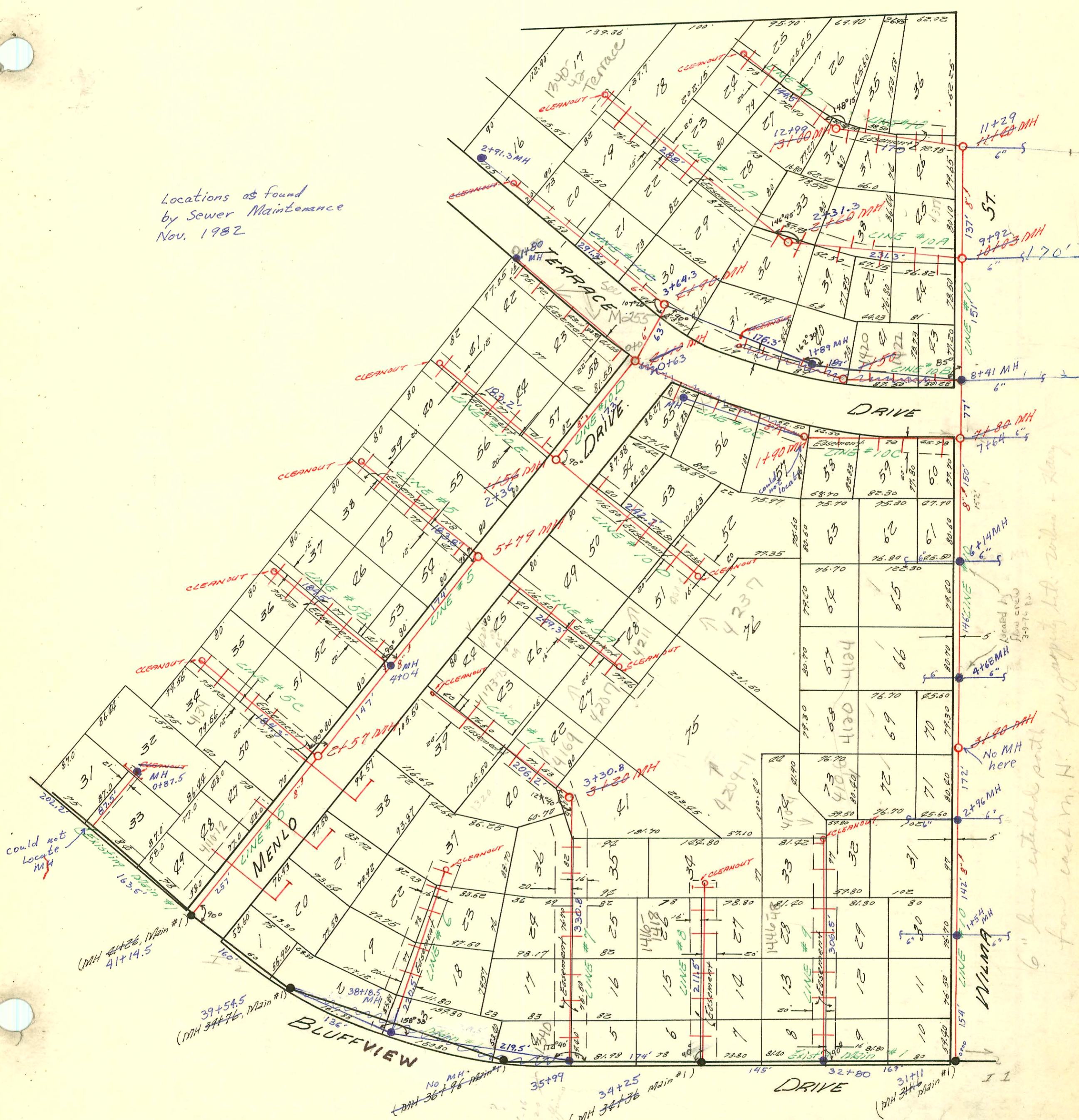


SCALE 1" = 100'

Locations as found by Sewer Maintenance Nov. 1982



could not locate MH

6" line extended past from each m. H. for tapping into main

- 70 #3571-1322-24 Bluffview - lining 6-30-81 @ lateral of Junction line East Edge of front lot (See Permit)
- #3490 - 4174 Menlo 6-15-81 S.C. Sewer 5+79.0 NE (72.0' N) (5' x 30')
- #5149 - 4031 Wilma 2-1-82 - after lining (6' x 8" m.H. inside of gutter & 2' x 2' of main sewer)
- #2180 - 10368 (1510/2 S. Terrace) - Henry - (28' in from curb in front of house)
- #24263 - 11/17/84 4392 S. Wilma - Henry - (Rpt. all but lot 41 - 191' S of 1982)
- #91-19652-7 (27324) 1146 S Terrace R (incl. incl.) - no record of connection - City was repair - where 100' W of old. 1-4" C.O.; 4" S.C. to P.V.C.; 1/4" C.O.; 8" Man. App. 5.6 H. day

### CONSTRUCTION RECORD

### SERVICE RECORD

STATION	ELEVATION		Depth	MANHOLE	4-INCH "Y" BRANCHES		No. of Permit		House Number		DATE OF PERMITS	
	Ground	Grade			North West	South East	North West	South East	North West	South East	North West	South East
Line #5 0+00	151.3	127.5	3.8	Existing man								
1+00	153.8	127.8	6.0				74-23477		4110 E Menlo		12-21-94	
2+00	155.8	128.2	7.6									
	156.8	128.7	8.1	2+57								
3+00	157.2	129.1	8.1									
4+00	157.0	129.9	7.1	4+04								
5+00	157.2	130.7	6.5									
	157.4	151.3	6.1	5+79								
Line #5A Line #5B Line #5C Line #6 Line #7 Line #8	No informations on grades and dimensions of sewers are available from the plan.											
0+00	Line #7 next page											
1+00	No informations are available fr. the plan.											
2+00												
3+00												
	3+20											
Line #8 Line #9	No informations are available.											
Line #10	No informations on Y's are available.											
0+00	151.0	125.3	5.7									
1+00	152.8	125.6	7.2									
2+00	154.20 155.0	125.63 125.9	9.1	1+54								
3+00	154.56 156.5	126.12 126.2	10.3	2+96								
	157.6	126.5	11.1	3+90								
4+00	157.8	126.5	11.3									
5+00	158.4 158.4	126.8	11.6	4+68								
6+00	159.1	127.1	12.0									
7+00	159.0 159.8	127.12 127.2	11.9	6+14								
	158.3	127.7	10.7	7+64								
8+00	158.0 158.1	127.84 127.7	10.4	8+41								
9+00	157.2	128.0	9.2									
10+00	155.9	128.3	7.6									
	155.8	128.3	7.5	9+92								
11+00	154.3	128.6	5.7									
	153.6	128.7	4.9	11+29								
12+00	153.5	128.9	4.6									
13+00	155.2	129.4	6.0	12+99								
		127.5		13+00								
Line #10A	0+00	155.76	148.26	Existing man								
1+00	No informations are available fr. Plan											
2+00	156.59	150.34		2+313								
Line #10B	0+00	157.6	129.0	8.6								
1+00	158.0	129.3	8.7									
	158.0	129.4	8.6	1+50								
Line #10C	0+00	158.3	127.6	10.7	Existing man							
1+00	158.4	128.5	9.9									
2+00	158.5	129.3	9.2	1+90								
3+00	158.2	150.3	7.9	Line ends approx 3+50								
4+00	158.2	151.2	7.0									
	157.9	151.3	6.6	4+10								
	157.4	152.2	5.5	4+90								
Line #10D	0+00	157.9	151.3	6.6	Existing man							
1+00	158.0	151.8	6.2									
	158.0	152.1	5.9	1+54								
Line #10E	No informations are available.											

No informations on Y's are available.

see next page

see next page

98-12323-7 7-9-48 4134 E Menlo - Henning

4119 E Wilma 5/0 94-5956-701 4/25/94 5/0 2' Inside WPL + 21' S of NPL, 5/0 5' Inside WPL + 4" clay

4117 E Wilma 5/0 " 94-5357-7 4/14/94 20' N of SPL, 14' N of MH 4" clay

4208 E Wilma 5/0 # 91-21221-7 4/22/91 5/0 10' off main (4" Clay)

4210 E Wilma # 91-21332-7 4/25/91 5/0 10' off main (4" Clay)

# 20802-7 4/22/91 4320 E Wilma Lubbers (5/0 at main MH, curbside yard)

70-15540 4361-3 Wilma Henning 1-22-96

4031 Wilma - 5149-2/1/82 - Al Henning

C57849 1524 Wilma 9-24-76 - Al Henning SO.

57849 570-20 S. Terrace Dr. 9-24-76 "

57850 4339 Wilma 9-24-76 "

57851 4367 Wilma "

57852 4373-75 Wilma 10-21-90 Gurley 8.0 (153' off 104th) 11+55

# 00165 70 4335 + 35 Wilma 4-25-80 93' 54" 11+40

# 00166 70 4377 Wilma 4-25-80-111' 54" 11+40

# 00167 70 4377 + 79 Wilma 4-25-80-145' 54" 11+40

See off C32806-4142-42 E. Harry - 6/8/72 - Al Henning

See off C32857-4149 Wilma # 12-5-72 Al Henning

See off C32807-4207-09-13-15 Wilma - 6/8/72 - Al Henning

See off C31613-1033-13-49-51 E. Wilma - 4/17/72 - Al Henning

See off C28668-4108-10-4105-07-13-15 Wilma - 10/21/71 - Al Henning

See off C32629-1517-19-23 S. Terrace - Al Henning - 4/2/72

See off C32805-1506-10-12 Ruffness - 6/8/72 - Al Henning

See off C36841-1507-11 S. Terrace - 1-23-73 - Al Henning

See off C32807

See off C32805

See off C36841