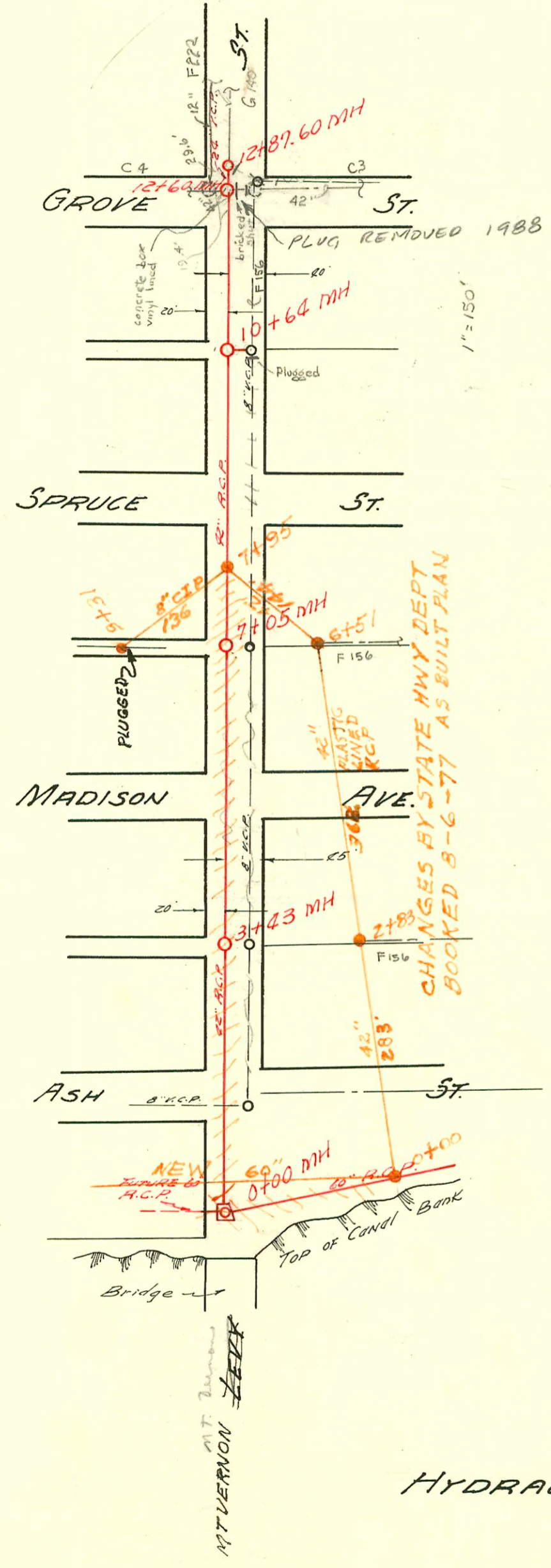
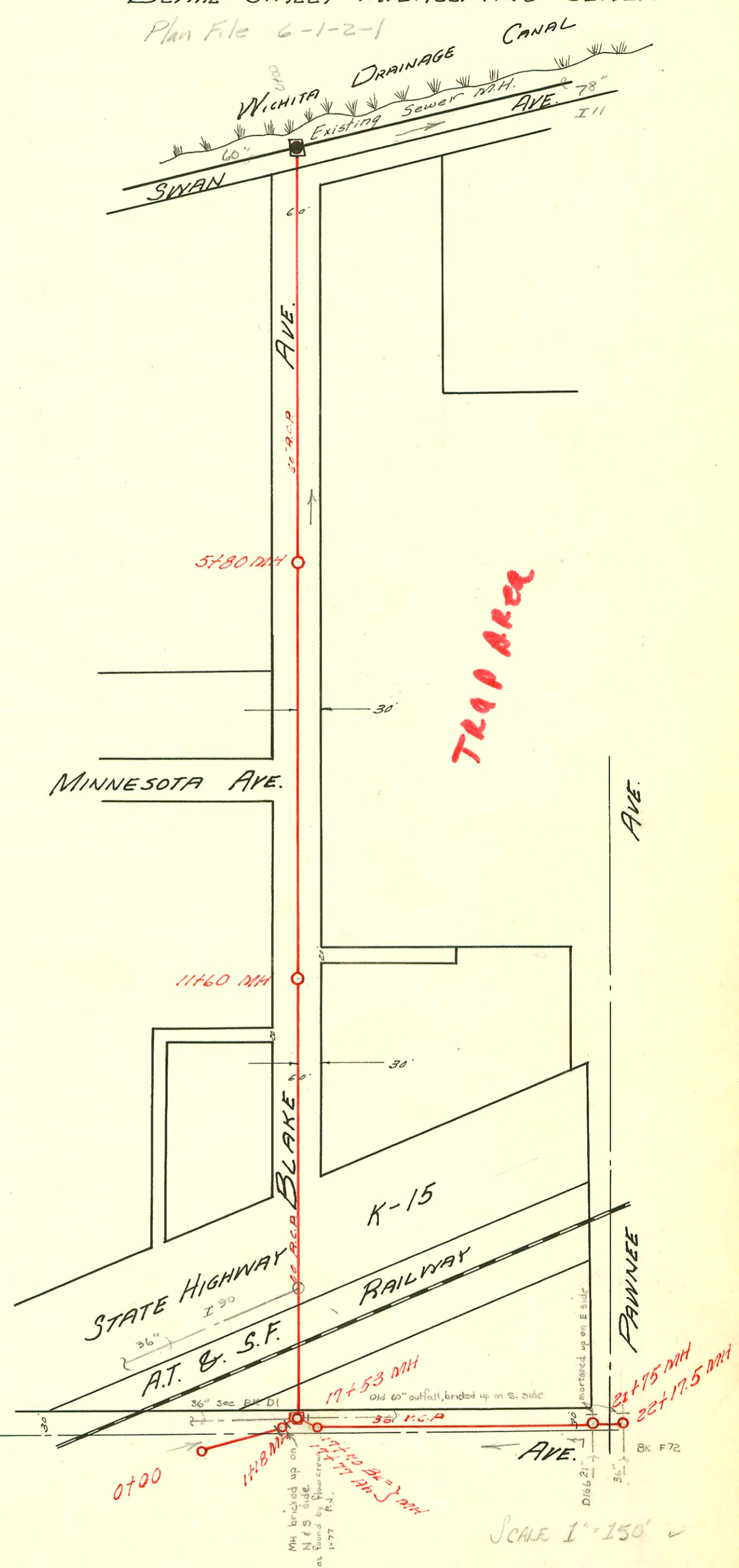


# LEVY STREET INTERCEPTING SEWER



# BLAKE STREET INTERCEPTING SEWER

Plan File 6-1-2-1



### CONSTRUCTION RECORD

### SERVICE RECORD

STATION	ELEVATION		Depth	MANHOLE	4-INCH "Y" BRANCHES		No. of Permit		House Number		DATE OF PERMITS	
	Ground	Grade			North West	South East	North West	South East	North West	South East	North West	South East
72+00	104.0	82.0	22.0									
75+00	103.2	82.1	21.1									
76+00	102.7	82.3	20.4									
77+00	102.5	82.4	20.1									
78+00	102.7	82.5	20.2									
79+00	102.7	82.6	20.1									
	100.9	83.8 IN	17.1	79+9437								
Levy Street Intercepting Sewer												
0+00	100.5	82.59	17.9	0+00								
1+00	99.8	84.1	15.7									
2+00	99.0	84.4	14.6									
3+00	99.5	84.7	14.8									
	99.2	84.77	14.5	2+83								
4+00	99.0	85.0	14.0									
5+00	98.9	85.3	13.6									
6+00	98.7	85.6	13.1									
7+00	98.6	85.9	12.7									
	98.5	85.80	12.5	6+51								
7+95	102.5	86.2	16.3									
	97.6	86.5	11.1	7+95								
10+00	99.0	86.8	12.2									
	98.9	87.0	11.9	10+64								
11+00	98.4	87.1	11.3									
12+00	97.0	87.4	9.6									
	97.0	87.5	9.5	12+60								
	97.0	87.4 IN	7.6									
	97.0	90.1	6.9	12+87.60								
Blake Street Intercepting Sewer												
0+00	98.5	79.1	19.4									
1+00	96.0	79.3	16.7									
2+00	96.3	79.4	16.9									
3+00	96.5	79.5	17.0									
4+00	96.2	79.7	16.5									
5+00	96.4	79.8	16.6									
	96.2	79.9	16.3	5+80								
6+00	96.5	79.9	16.6									
7+00	96.5	80.1	16.4									
8+00	97.0	80.2	16.8									
9+00	94.9	80.3	14.6									
10+00	96.0	80.4	15.6									
11+00	96.0	80.6	15.4									
	97.2	80.7	16.5	11+60								
12+00	98.0	80.7	17.3									
13+00	97.8	80.8	17.0									
14+00	97.4	81.0	16.4									
15+00	99.0	81.1	17.9									
16+00	96.2	81.2	15.0									
17+00	96.4	81.4	15.0									
	96.8	81.23	15.4									
	98.0	83.03	13.8	17+53								
	97.8	83.06	14.9									
18+00	97.8	83.16	14.8	17+70								
19+00	97.7	83.2	14.6									
20+00	97.7	83.4	14.3									
21+00	97.2	83.6	13.6									
21+12	97.1	83.8	13.3									
	96.5	83.76	12.5									
	96.3	83.7	12.4	21+75								
22+00	96.3	84.0	12.3									
	96.2	84.2	12.0	22+175								
0+00	99.0	87.2	11.8									
1+18	98.0	87.0	12.0									
		83.7	12.3									
		83.5	12.5									
2000-02735-12/18/00 - <u>KFC</u> 2340 S. Hydracoolia - Slo-McCallough 2000-02734-12/18/00 - <u>Pizza Hut</u> 1703 E. Pawnee - Slo-McCallough												

2977 Blake Hwy 15 In The Herald 11-6-56  
 see 11345-1924 S. Blake - Corran - 2-20-57 - Kap