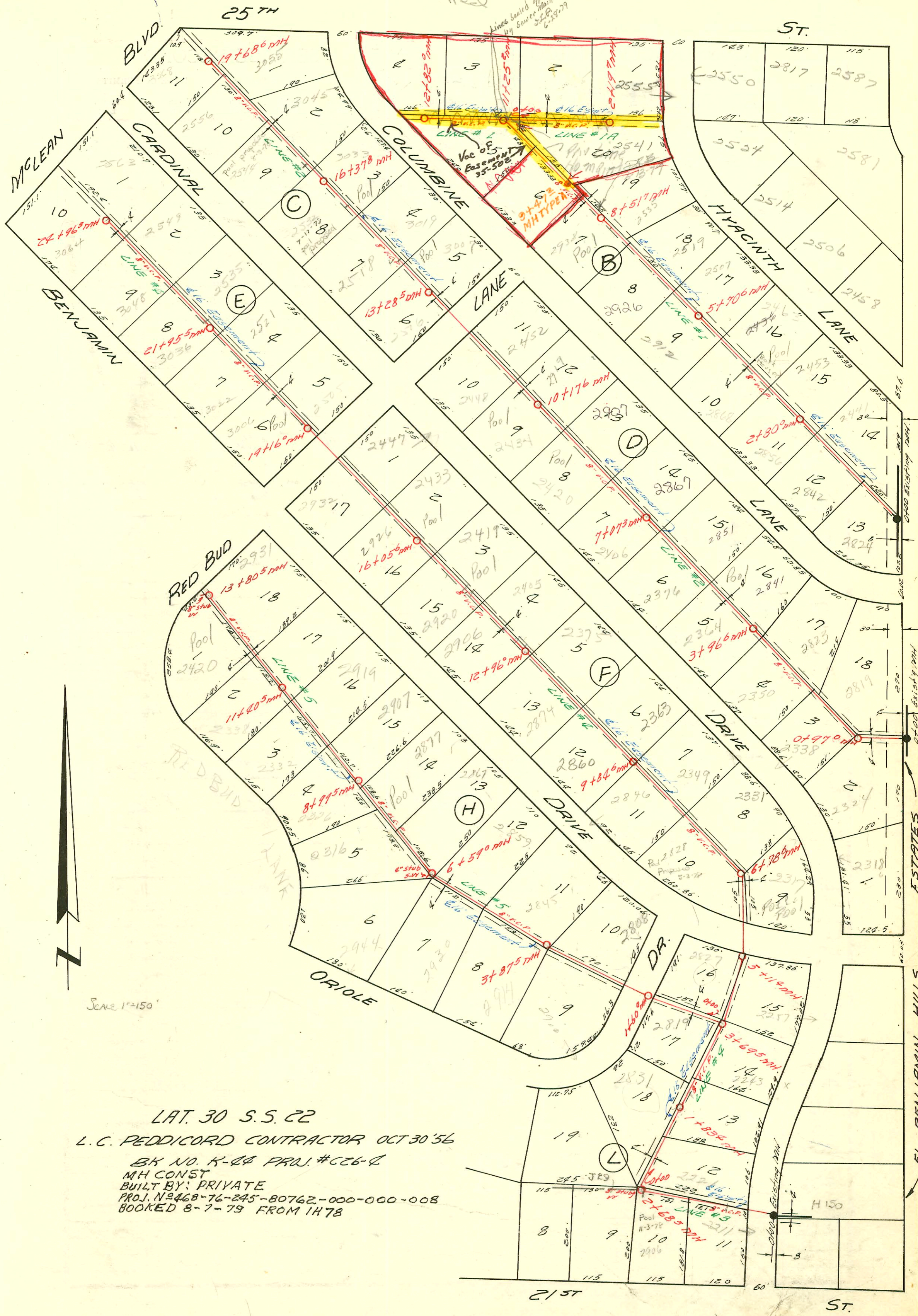


Church area in Red



Scale 1"=150'

LAT. 30 S.S. 22  
 L.C. PEDDICORD CONTRACTOR OCT 30 '56  
 BK NO. K-44 PROJ. #C26-Q  
 MH CONST  
 BUILT BY: PRIVATE  
 PROJ. N. 2468-76-245-80762-000-000-008  
 BOOKED 8-7-79 FROM 1478

EL. BENJAMIN HILLS ESTATES

CONSTRUCTION RECORD

SERVICE RECORD

STATION	ELEVATION		Depth	MANHOLE	4-INCH "Y" BRANCHES		No. of Permit		House Number		DATE OF PERMITS	
	Ground	Grade			North West	South East	North West	South East	North West	South East	North West	South East
Line #1 0+00	127.1	119.3	7.8	Existing MAN								
1+00	126.3	119.7	6.6		+593	+50.1	C52789	C65358	2824 Columbine	2441 Hyacinth	12/12/75	3-14-78
2+00	127.0	120.1	6.7		+212	+392	C52788		2842 Columbine		12/12/75	
2+80	127.1	120.4	6.7	2+80								
3+00	127.0	120.5	6.5		2+91°	+89°	C53199	C63571	2856 Columbine	2453 Hyacinth	1/15/76	10-18-77
4+00	127.4	120.9	6.5		4+186	+166	C53200	C58599	2868 Columbine	2463 Hyacinth	11/5/76	9-25-80
5+00	127.4	121.3	6.1		5+236	+588	18301	C59360	2912 Columbine	2501 Hyacinth	5-18-87	1-4-77
5+706	127.4	121.6	5.8	5+706								
6+00	127.4	121.7	5.7		+87°	+85°	C58275	C63464	2926 Columbine	2517 Hyacinth	10-20-76	10-11-77
7+00	127.4	122.1	5.3		+208	+188	C54096	C61290	2938 Columbine	2535 Hyacinth	3-9-76	5-24-77
8+00	127.3	122.5	4.8									
8+517	127.0	122.7	4.3	8+517								
9+00	127.5	122.9	4.6		+473	+578						
10+00	127.0	123.3	3.7			+75°						
10+20.5	127.4	123.7	3.7		+853	+1020.5		9190	2555 Hyacinth			7-14-83
11+00	127.3	123.8	3.5	11+252		+11+18.5		C67504	2555 Hyacinth			7-25-78
12+00	127.5	124.1	3.2			+468 (XN)						
12+82°	127.4	124.4	3.0	12+82°								
Line #1A 0+00	127.4	123.9	3.5	EXISTING MAN	Y NORTH	Y SOUTH						
1+00	127.8	124.3	3.5		+778							
2+00	127.9	124.7	3.2									
2+197	127.7	124.8	2.9	2+197								
Line #C 0+00	125.8	119.0	6.8									
0+97°	125.8	119.3 IN 119.2 OUT	6.5 6.6	0+97°								
1+00					Y WEST	Y EAST						
2+00	127.0	119.5	7.5		+338	+318	C38833	C54171	2337 Cardinal	2517 Columbine	5/8/73	3/12/76
3+00	127.3	119.7	7.6		+644	+624		C54170	2350 Cardinal	2823 Columbine		3/12/76
3+23.3	126.5	119.9	6.6	3+966			C55817		2350 Cardinal		6-9-76	
4+00					4+092	+042	C53649	C59124	2364 Cardinal	2841 Columbine	2-9-76	12-16-76
5+00	126.6	120.1	6.5		+922	+402	C52845	C63272	2376 Cardinal	2851 Columbine	12-16-75	9-29-77
6+00	127.2	120.3	6.9		Xop 6+76.3	+887	C49972		2406 Cardinal	2862 Columbine	6-18-75	10-13-76
7+00	127.2	120.5	6.7									
7+073	127.3	120.5	6.8	7+073								
8+00	127.3	120.7	6.6		8+287	+267	C49971	C58152	2420 Cardinal	2861 Columbine	6-18-75	10-13-76
9+00	127.2	120.9	6.3		9+393	+854	C59645		2919 Columbine			1-28-77
10+00	127.2	121.1	6.1		+874	+854	C59192		2919 Columbine		10-15-76	
10+176	127.2	121.1	6.1	10+176								
11+00	127.3	121.3	6.0		11+01.6	+187	C55777	C56013	2448 Cardinal	2452 Red Gum	6-7-76	6-21-76
12+00	127.4	121.5	5.9									
13+00	128.5	121.7	6.8		+125	+105	C54743	B1435	2506 Cardinal	3007 Columbine	9-23-75	4-8-64
13+285	128.9	121.8	7.1	13+285								
14+00	128.1	121.9	6.2		14+167	+147	#2931		2518 Cardinal		10-30-76	
15+00	128.1	122.1	6.0		15+707	+687	#2932	C58894	2522 Cardinal	2933 Columbine	10-30-76	12-1-76
16+00	128.1	122.3	5.8									
16+378	127.8	122.4	5.4	16+378								

22575 #2930 - Top - 3019 Columbine - 5-30-56 - 2-16-89  
 #12882 - Top - 2914 Columbine - 6-10-60 (57245)  
 #22578 - 2-16-89 - 3019 Columbine - NC - (14783.5 - 74' W of SR)