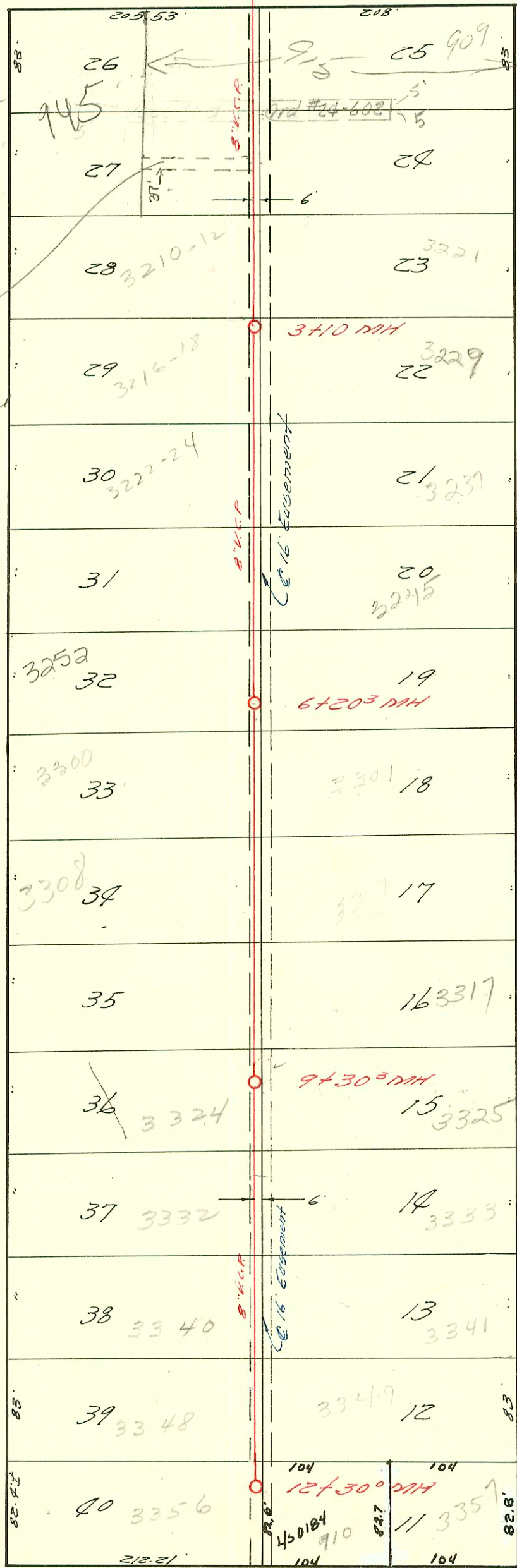


31ST H 178 ST. So.

PAID 10' SEWER  
TO 945' GRANTED  
FM 687  
BY 800  
1-23-00



AVE.

WALNUT

HANDLEY

33RD ST. So.

1"=100'

LAT. 38 S. 522  
L. C. PEDDICORD, CONTRACTOR NOV. 9'56  
BK. NO. K-39 PROJ. #C26-65

