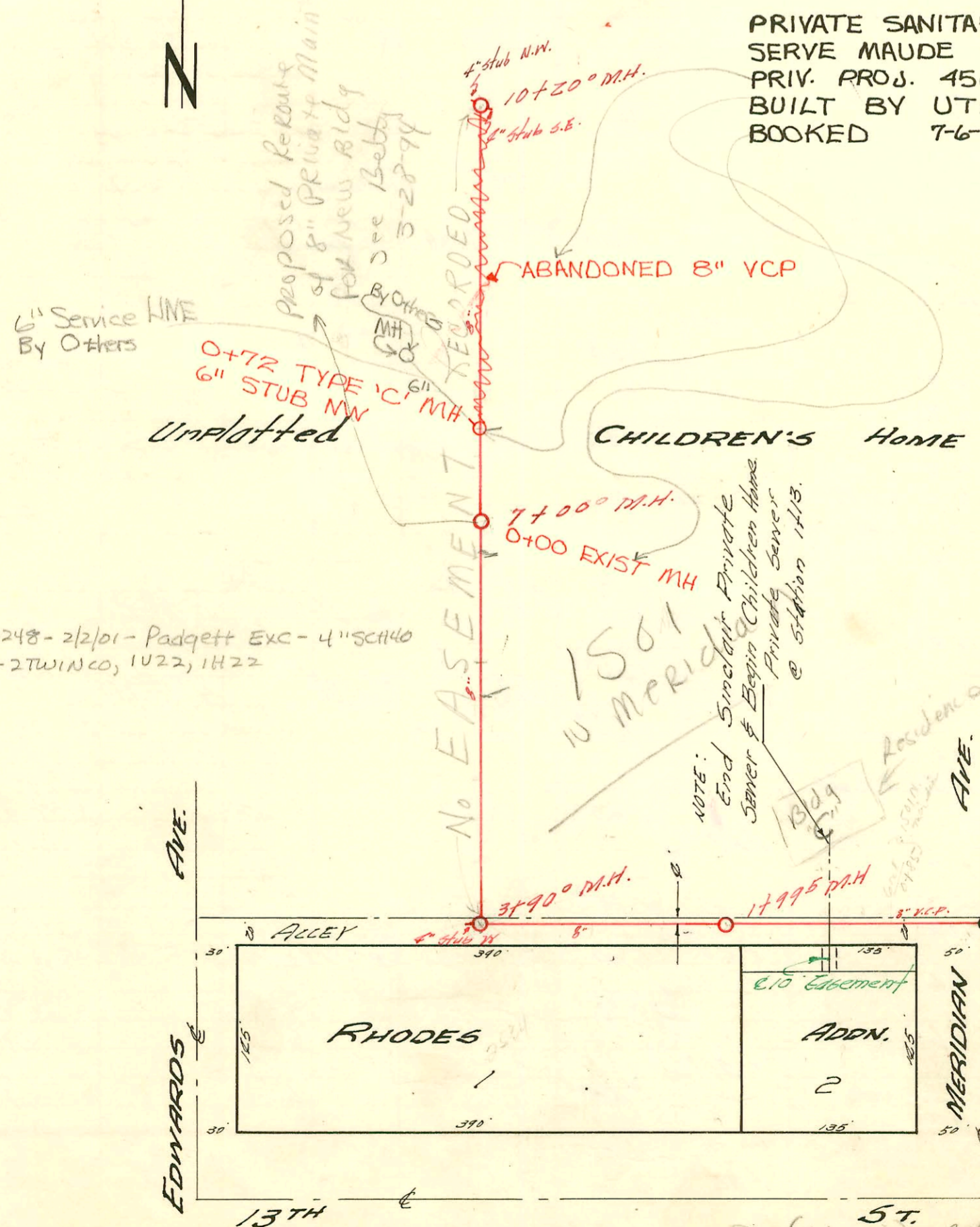


LAT. 8 SUB 9 S.S. 22
 UTILITY CONTRACTORS INC. DEC. 17 '56
 BK NO. K37 PROJECT NO. 26-68

PRIVATE SANITARY SEWER IMPROVEMENTS TO
 SERVE MAUDE CARPENTER FIRST ADDITION
 PRIV. PROJ. 456 PPS (607861)
 BUILT BY UTILITY CONTRACTORS, INC
 BOOKED 7-6-94 FROM AS BUILTS



Rep. 2001-00248-2/2/01-Padgett Exc-4" SCH40
 15' ED FMH - 2TWINCO, 1U22, 1H22

SWR 2000-06211
 Rep-1501 W Meridian 112960
 A Henning -4" SCH40- Tied to 7
 at 62.5' SE of MH 700
 #1586 - 12/1/91 - 1501 W Meridian
 (6426.0 top 4" SWR 35)

#B3620-3300 W. 89 - Bradford Service 6-21-65-top (1+59.9) C46551-1501 W. Meridian - 9/10/74
 20 # 17111 - 3423 W. 9 - Coleman phg. 5-15-63-top (9+03.4) Top (5+67)
 C 30928-1501 W. Meridian (addn.) deal off Dan Norton
 (N.W. Manhole stub) 3-13-72
 LAT. 41. S.S. #22
 DEC. 26 1956, PRIVATE JOB BK. # K-38
 C.C. PEDDICORD, CONTRACTORS

CONSTRUCTION RECORD

SERVICE RECORD

LINE #1

STATION	ELEVATION		Depth	MANHOLE	4-INCH "Y" BRANCHES		No. of Permit		House Number		DATE OF PERMITS	
	Ground	Grade			North West	South East	North West	South East	North West	South East	North West	South East
0+00	121.9	112.8	9.1	EXISTING MH								
1+00	121.5	113.0	8.5		+50°							
2+00	121.4	113.2	8.2		+01°							
2+00	121.2	113.1	8.3	1+50°	+06°							
3+00	120.9	113.4	7.5		+00°							
4+00	121.7	113.6	8.1		+55°	+266						
5+00	121.3	113.7	7.7	4+495	+36°	+04°	#3736	3321 W	3321 W	2-12-57		
5+00	121.3	113.8	7.5		+37°	+356	C 46067	3321 W	3304 R	8-2-74		
6+00	121.6	114.0	7.6		+255	+186	#325	3321 W	3306 W	10-7-58	4-8-60	
7+00	121.4	114.2	7.2		+200	+200	#16863	3325 W	3306 W	2-2-01		
8+00	121.7	114.3	7.4	7+50°	+37°	+114		3402 W	3402 W	1-11-74	1-3-57	
8+00	121.1	114.4	7.7		+61°	+91°		3402 W	3402 W	3-5-57		
9+00	122.9	114.6	7.3		+220	+263		3402 W	3402 W	12-19-63		
10+00	124.8	114.8	10.0		+92°	+92°		3402 W	3402 W	3-27-63		
10+00	124.8	114.7	9.9	10+50°	+92°	+92°		3402 W	3402 W	2-27-63		
11+00	125.7	115.0	10.7		+31°	+83°		3402 W	3402 W	5-1-59		
12+00	125.7	115.2	10.5		+70°	+89°		3402 W	3402 W	2-17-77		
13+00	123.8	115.4	8.4		+323	+293		3402 W	3402 W	2-19-57		
13+00	122.0	115.6	6.4	13+485	+323	+293		3402 W	3402 W	2-4-76		

LINE #2

0+00	121.4	113.2	8.2	EXISTING MH	Y WEST	Y EAST						
1+00	121.5	113.4	8.1		+117	+235						
2+00	122.0	113.6	8.4	1+90°	+175°	+75°						
3+00	119.7	110.8	8.9		+109°	+276°						
4+00	122.2	111.2	11.0	3+90°	4" SUB N.							
5+00	122.7	111.7	11.0		+595							
6+00	123.0	112.1	10.9		+676°							
7+00	122.8	112.5	10.3		+700°							
8+00	122.5	112.9	9.6		+772							
9+00	122.6	113.3	9.3		Y WEST	Y EAST						
10+00	123.8	113.7	9.1		+95°							

C 53597 - 3533 W. 9th St - 2/4/76
 Tap 3496 3323 W. 9th St - 1-7-57
 #3489 Tap - 3313 W. 9th St - 1-7-57
 4012 Tap 3525 W. 9th St - 3-4-57
 6012 Tap 3197 W. 9th St - 1-6-58
 #12485 Sub on 8th St 3432 W. 8th St - L.L. Schlegel 4-11-60 (9+92.3)

4013 - Tap - 3515 W. 9th St - Mc Donnell - 3-13-57
 5223 - Tap - 2506 W. 12th St - P. H. Co. - 8-26-57
 5779 - Tap - 2518 W. 12th St - Bradford - 9-15-57
 5810 Tap - 33N W. 9th St - Reynolds - 9-16-57
 5490 6th St - 1501 N. Meridian - 10-21-57 (+85)
 5814 Tap - 2700 W. 13th St - 12-6-57
 6430 Tap - 3528 W. 13th St - 3-27-58
 70042 Tap 3412 W. 9th St - 4-14-59 (+58)
 #13572 Sub on 1501 N. Meridian - 11-23-60 (+94)
 #22931 - Sub on 7-16-71 - 1-16-71