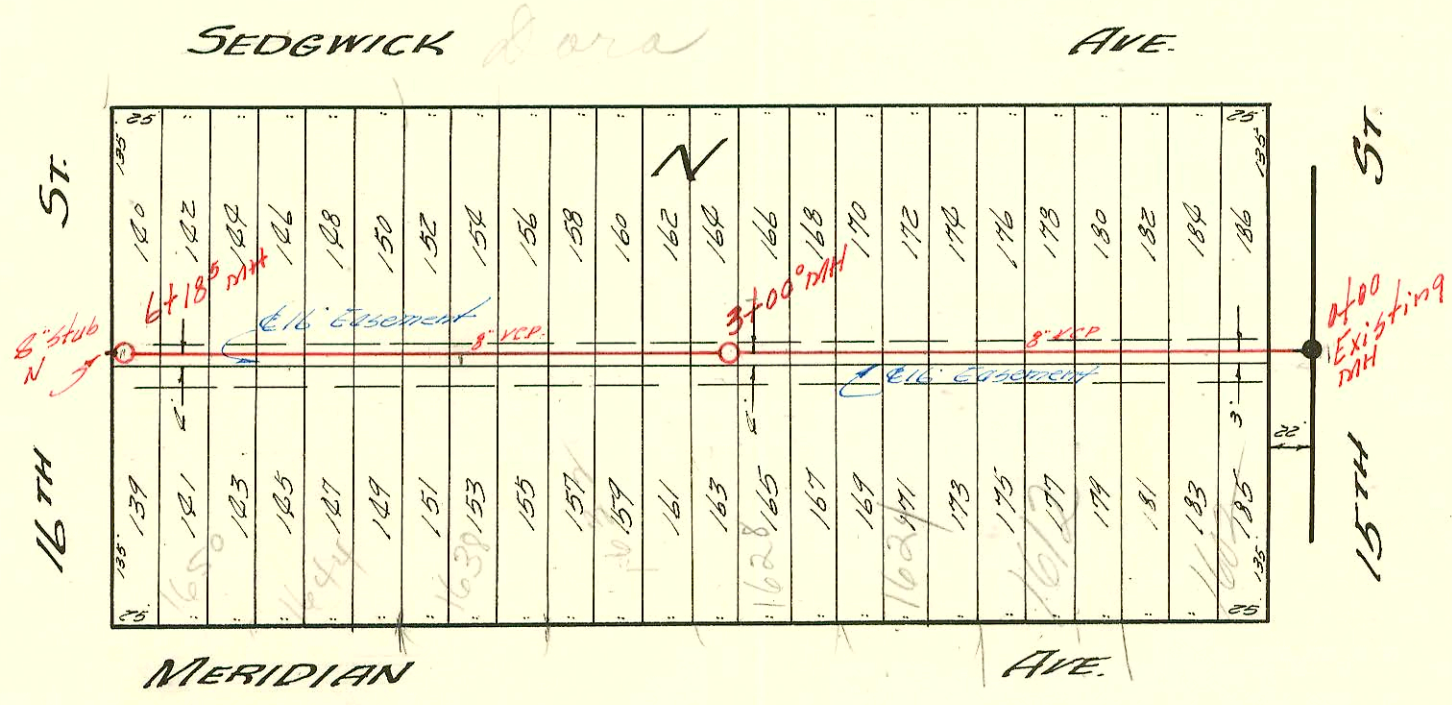


LAT. & SUB. 12 S. 5. 22
 UTILITY CONTRACTORS INC. JAN. 2 1957
 BK NO. K-28 PROJ. NO. C26-45



LAT. 8 SUB. 13 S. 5. 22
 L. C. PEDDICORD, CONTRACTOR JAN 5 57
 BK NO. K-37 PROJ. NO. C26-94

CONSTRUCTION RECORD						SERVICE RECORD						
STATION	ELEVATION		Depth	MANHOLE	4-INCH "Y" BRANCHES		No. of Permit		House Number		DATE OF PERMITS	
	Ground	Grade			North-West	South-East	North-West	South-East	North-West	South-East	North-West	South-East
0+00	119.4	110.6	8.8	Existing MH								
	118.3	110.7	7.6	0+27°	+82°	+80°	14577	3474	1144 N. Gordon	1259 N. Edwards	8-16-61	1-7-57
1+00	119.5	110.8	8.7		+75°	+73°	981883	1907	1137 N. Gordon	1145 N. Edwards	10-2-48	8-8-50 4-1-59
2+00	117.2	110.0	7.2		+30°	+30°		3475	1243 N. Edwards			1-7-57
3+00	116.5	111.2	5.3		+24°	+22°	22963		1130 N. Gordon		4-21-89	
					+58°	+56°	16503		1126 N. Gordon		6-14-86	
4+00	115.8	111.3	4.5	3+70°	+51.6	+48.0	273810	275638	1122 N. Gordon	1125 N. Edwards	8-22-79	12-6-79
	115.8	111.4	4.4		+35°	+30°						
					+93.5	+91.5		170.78	1111 N. Gordon			5-2-63
5+00	115.6	111.6	4.0		+17.1		273809		1116 N. Gordon		8-22-79	
					+83°	+88°	273808		1110 N. Gordon		8-22-79	
6+00	115.8	111.8	4.0		+24°	+22°		96.64807	1105 N. Edwards		5-29-57	1-9-57
					+88°	+86°		9890	1107 N. Edwards		4-2-59	
	115.9	112.0	3.9	6+99.5	11+90.0		270839		1102 N. Gordon		3-26-79	
LAT. 8 SUB. 13 S.S. 22												
0+00	120.3	110.0	10.3	Existing MH	+40°	+40°	11577	3870	1600 N. Meridian	1573 N. Reynolds	9-16-59	2-21-57
					+92°	+90°						
1+00	120.5	110.2	10.3		+41°	+39°						
					+94°	+92°		8467	1624 N. Meridian		10-30-58	
2+00	120.9	110.5	10.4		+40°	+38°						
					+89°	+87°						
3+00	121.2	110.8	10.4	3+00	+42°	+40°						
					+96°	+90°		5448	1632 N. Meridian		10-9-57	
4+00	121.1	111.1	10.0		+42°	+40°		8258	1638 N. Meridian		10-13-58	
					+94°	+92°						
5+00	121.5	111.4	10.1		+43°	+41°		5256	1642 N. Meridian		9-6-57	
					+59°	+53°		9614	1650 N. Meridian		1-25-57	
6+00	122.1	111.7	10.4									
	124.4	111.8	12.6	6+185	8" Sub N.							

5196 Tap-2409 W. 16th St. - Al Henning - 9-5-57
 #7025 Tap-1628 N. Meridian - Reynolds - 6/25/68 (27795)
 9563 Tap 1612 N. Meridian Reynolds 3-18-59 1478
 9834 Tap 1241 N. Edwards Refoy, Jr 3-31-59 3411
 Tap C 70840 - 1106 N. Gordon - 3-29-79 (6745.7)