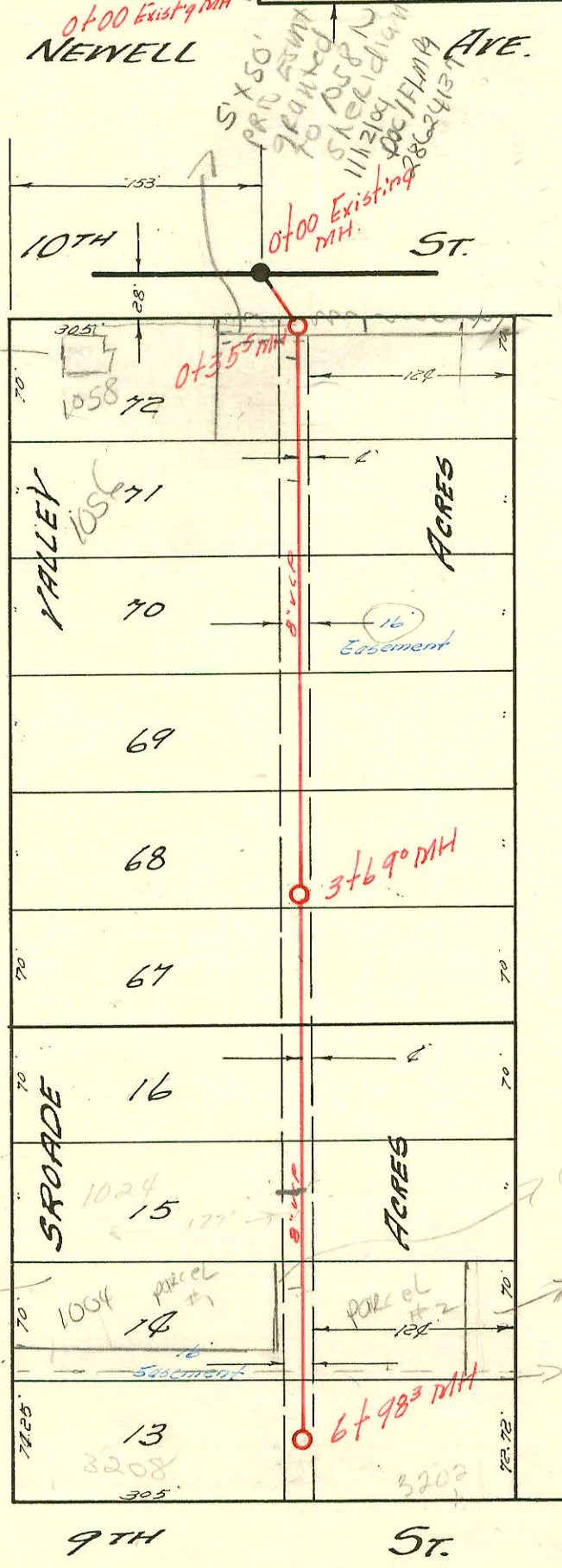


LAT. 2 SUB. 8 S.S. 22
 W. B. CARTER CONSTRUCTION CO. INC JAN, 18 1957
 BK. NO. K-38 PROJ. NO. C25-99

Rich with
 wills underground
 said he cont'd m.s.d.
 1058 N
 Sheridan
 TIPS
 MH 0735.5
 1112/09
 BK



prop. Lot split

add'l 4' of
 ESM + by separate
 30' cont.
 st. ded.
 5' ESM + by
 separate 21st

LAT. 4 SUB. 9 S.S. 22
 UTILITY CONTRACTORS INC, FEB. 6 '57
 BK. NO. K-37 PROJECT NO. C26-37

CONSTRUCTION RECORD						SERVICE RECORD						
STATION	ELEVATION		Depth	MANHOLE	4-INCH "Y" BRANCHES		No. of Permit		House Number		DATE OF PERMITS	
	Ground	Grade			North West	South East	North West	South East	North West	South East	North West	South East
0+00	119.7	112.2	7.5	Existing DMH	0+72	+287	170354	4468	3677-20 Zwarr	605 N. Knight	2-26-57	4-27-57
1+00	119.3	112.4	6.9		+763	+743						
					+103	+41°	4747		608 N. Kessler		6-26-57	
2+00	119.8	112.6	7.2		+7635		4748		414 N. Kessler		6-26-57	
					+20°	+015		6193	600 N. Kessler	615 N. Knight	4-8-57	1-31-58
					+64°	+54°	4351		624 N. Kessler		4-17-57	
3+00	120.6	112.2	7.8	3+005	+20°		3985		615 N. Kessler			3-12-57
						+26°		6059				6-25-57
4+00	120.7	113.0	7.7			3+65°	4467			605 N. Knight		4-29-57
	120.0	113.1 OUT 113.2 IN	6.9 6.8	4+55°	+03'	+01'	# 1684 3590		3615 N. W. Central		10-25-57 1-21-57	
5+00	120.3	113.3	7.0			+854						
	120.4	113.4	7.0	5+61°	2" stub NE.		8102		3601 W. Central		9/8/58	
LAT 4 SUB. 9 S.S. 22												
0+00	120.6	115.3	5.3									
	121.9	115.4 115.3	6.5 6.6	0+355	+555		4279		602 N. Kessler			4-8-57
1+00	121.7	115.5	6.2			+712						
2+00	122.2	115.6	6.6		+29°	+27°	5205		115 N. Sheldon		8-10-57	
					+097	+077	# 3665 3664		201 N. Sheldon		2-5-57	2-5-57
3+00	121.1	115.7	5.4		+22°	+60°	3664		115 N. Sheldon		2-5-57	
					+22°	+20°	43708		115 N. Sheldon		2-8-57	
4+00	121.4	115.8	5.6	3+69°								
	121.0	115.8	5.2		+19°	+17°	2452		201 N. Sheldon		2-18-57	
5+00	121.0	115.9	5.1		+786	+766						
6+00	120.4	116.0	4.4		5+48°	+46°	8108		602 N. Kessler		7-8-57	
					6+09°	+07°	3446		115 N. Sheldon		5-20-65	
					+47°							
					+872	+852	3809	4925	500 N. W. 9th	500 N. W. 9th	2-13-57	7-25-57
	120.4	116.1	4.3	6+983								

C 61042 - 602 N. Kessler - Seal off 5-5-77 - Wm. Berger
 # 14859 - top 655 - Knight - Keith Willard - done 10-23-61 (5+55)
 # 16183 - top 3609 W. Central - Keith Willard - done 7-26-62 (5+26)
 # 16284 - top 1030 Sheldon - W. Herring - 10-24-62 (4+67)