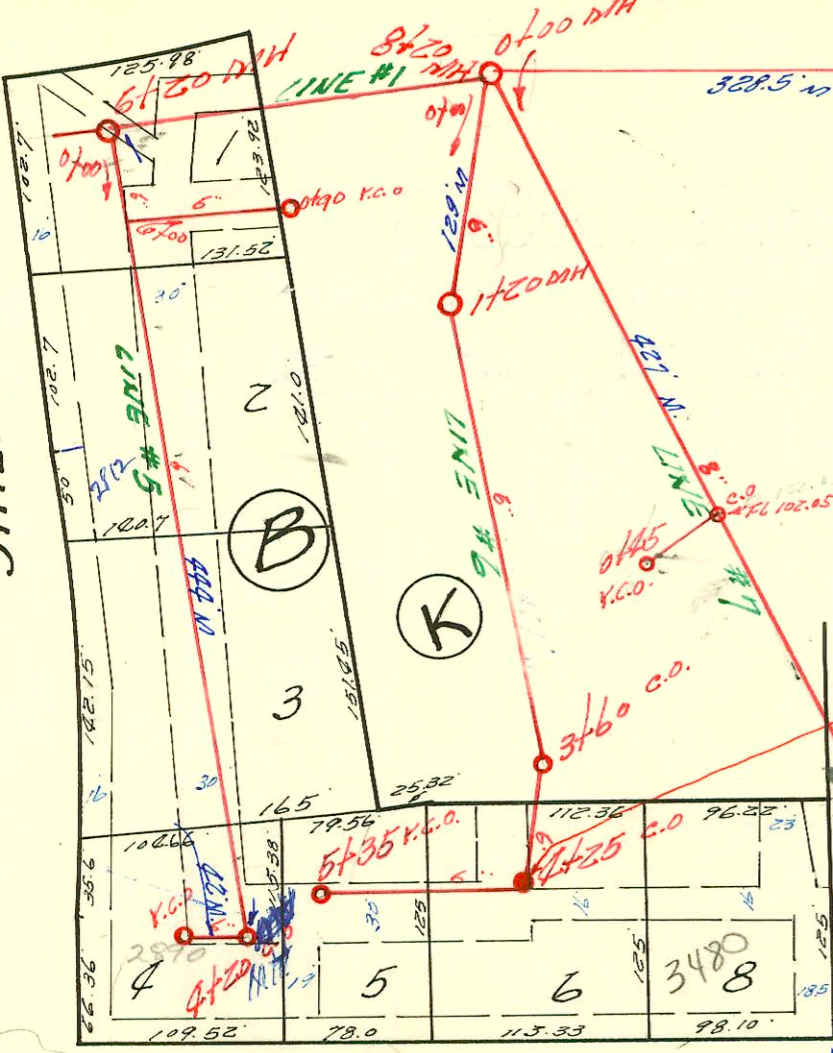


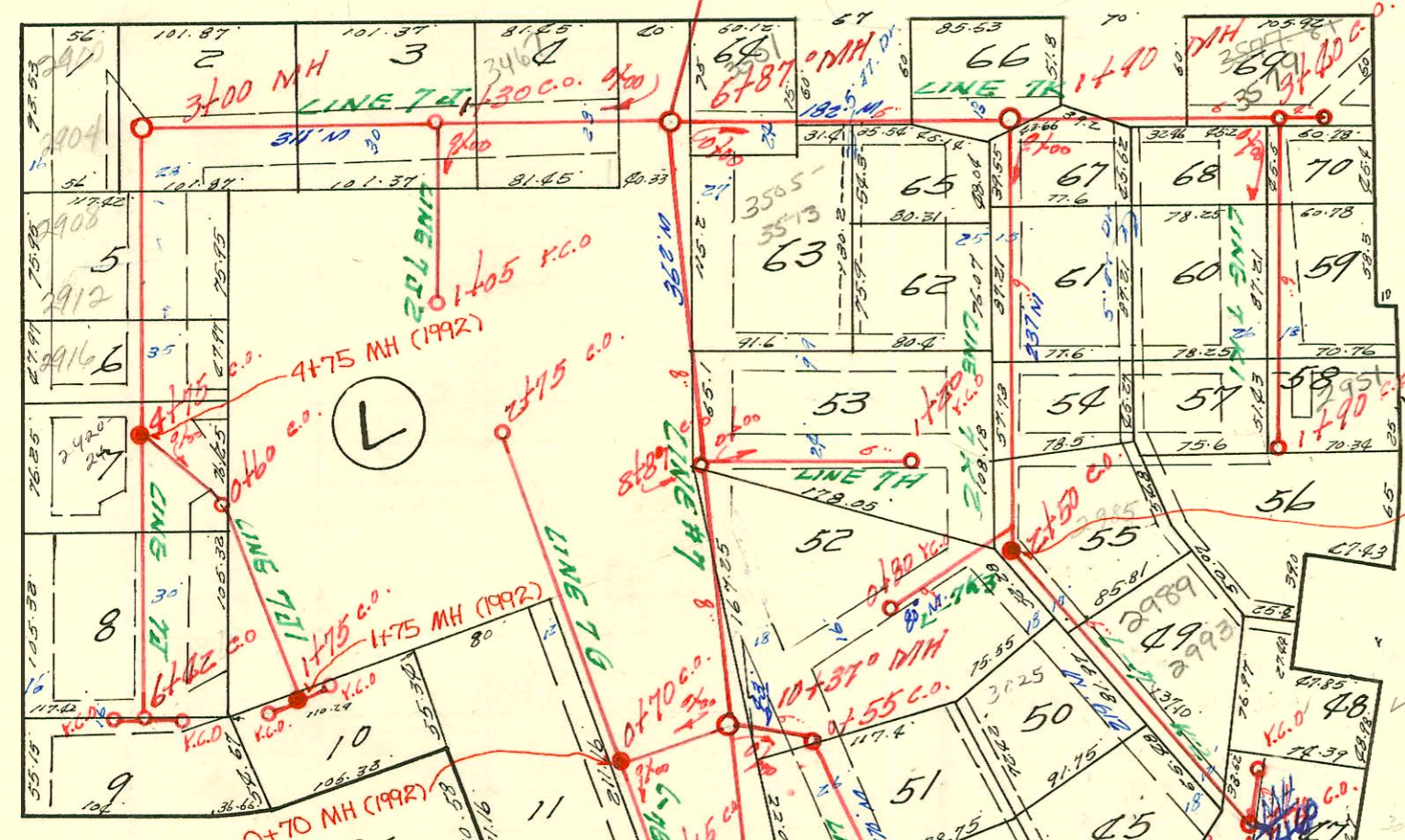
1=100

STREET



SUNNYBROOK

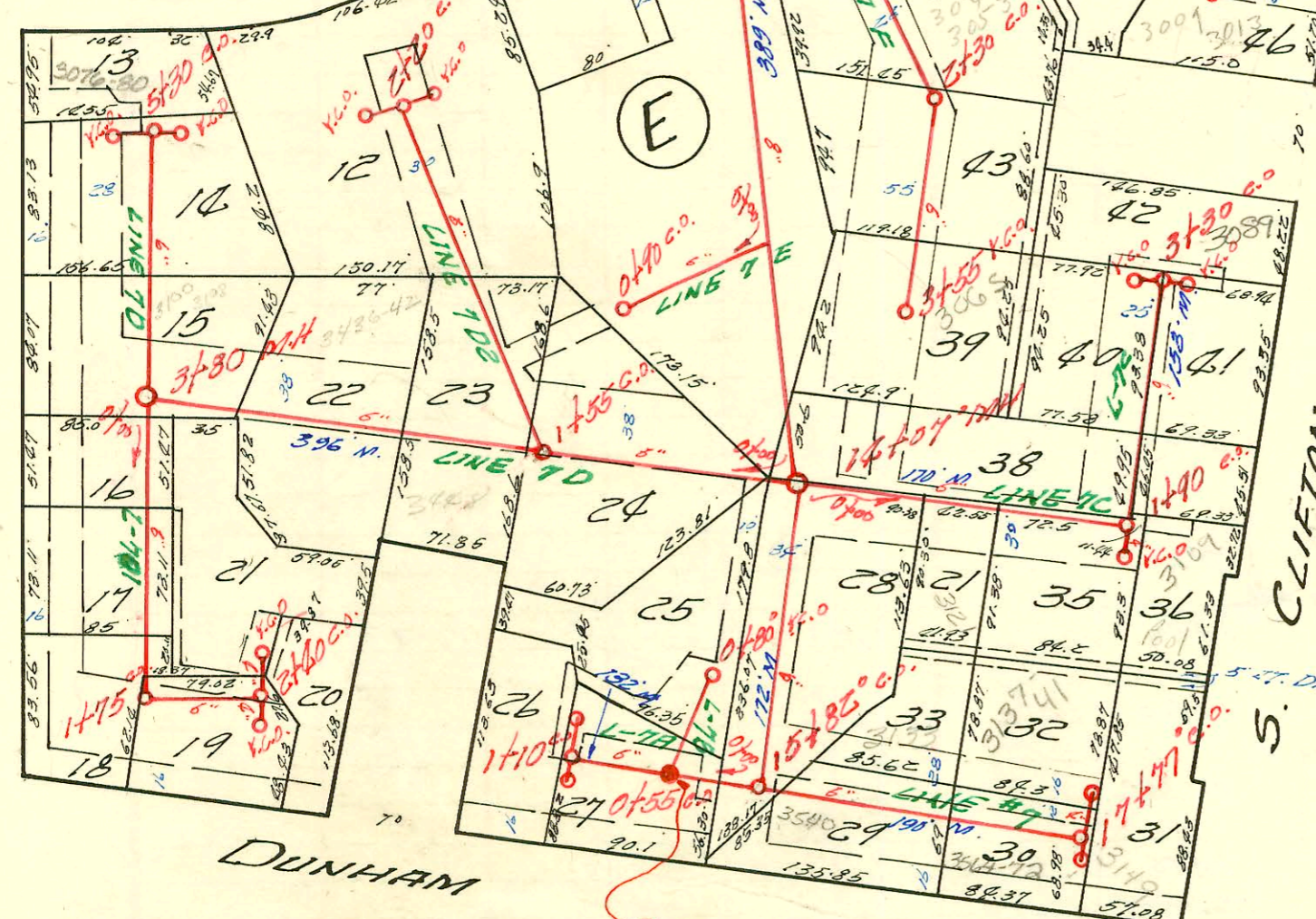
LANE



RUTAN CT.

ST.

So. RUTAN



CONSTRUCTION RECORD

SERVICE RECORD

STATION	ELEVATION		Depth	MANHOLE	4-INCH "Y" BRANCHES		No. of Permit		House Number		DATE OF PERMITS	
	Ground	Grade			North West	South East	North West	South East	North West	South East	North West	South East
Cont. LINE #1	10+00	105	93.9	11.1								
	11+00	105	94.2	10.6								
	12+00	105	94.9	10.1								
	13+00	105	95.5	9.5	13+00							
	14+00	106	96.5	9.5								
	15+00	107	97.5	9.5								
		109	98.05	10.9	15+50							
	16+00	109	103.0	6.0								
		110	103.0	7.0	16+50							
		110	103.1	6.9								
	17+00	110	103.8	6.6								
	18+00	110	103.9	6.1				96-8137	3589 R ROSS PKWY		12-4-96	
		110	105.3	2.7	18+85							
LINE #1A	0+00	110	106.0	2.0	Existing MH.							
	1+00	111	108.0	3.0								
		111	109.0	2.0	1+50 (K.C.O.)							
LINE #1B	0+00	110	103.1	6.9	Existing MH.							
		114	112.3	1.7	0+45							
LINE #1C	0+00	109	98.1	10.9	Existing MH							
	1+00	109	99.1	9.9								
	2+00	106	100.1	5.9		4" SCH 40 2796 2725		95-10087	3541 R ROSS PKWY		1-23-95	
		106	100.8	5.0								
	3+00	107	101.1	5.9								
		107	101.8	5.2	3+70							
LINE #8	0+00	105	95.4	9.6								
	1+00	105	96.3	8.7								
	2+00	105	97.2	7.8								
	3+00	104	98.1	8.9								
	4+00	109	99.0	10.0								
		110	99.4	10.6	4+27							
	5+00	110	100.0	10.0								
	6+00	110	101.0	9.0								
		110	101.3	8.7	6+52							
	7+00	110	102.2	7.8								
	8+00	110	103.1	6.9								
		110	103.2	6.8	8+70							
	9+00	110	103.2	6.8								
	10+00	112	104.1	7.9								
		112	104.7	7.3	10+33							
	11+00	112	105.1	6.9								
	12+00	112	105.7	6.3								
		112	105.8	6.2	12+18							
	13+00	114	106.3	7.7								
	14+00	116	106.9	9.1								
		116	107.0	9.0	14+13							
					Continue on Page 63							
LINE #8A	0+00	110	101.3	8.7	Existing c.o.							
	1+00	110	104.1	5.9								
		110	104.7	5.3	1+25							
	2+00	110	106.8	3.2								
		110	107.2	2.8	3+10							
LINE #8B	0+00	110	103.5	6.5	Existing MH.							
	1+00	110	107.5	6.5								
		116	109.8	6.2	1+60							
	2+00	121	111.5	9.5								
	3+00	121	115.5	5.5								
		122	115.8	6.2	3+10							
LINE #8C	0+00	112	104.8	7.2	Existing MH. (dry sealed off)							
	1+00	112	105.3	6.7	1+80			94-209-7	2869 5/0 ROSS PKWY		7-28-94	
		112	105.8	6.2								
LINE #8D	0+00	112	106.1	5.9	Existing MH							
		112	106.7	5.3	1+60							
	1+00	112	106.9	5.1								
		114	107.3	6.7	1+55							
LINE #8E	0+00	110	105.8	2.2	Existing							
	1+00	113	108.5	2.5		4" SCH 40 1745		2001-03165	3700 E R Sunnybrook		12-12-01	
		114	110.5	3.5	1+75 (K.C.O.)							
LINE #9	0+00	110	100.1	9.9	Existing MH							
	1+00	109	100.6	8.4								
	2+00	109	101.1	7.9		E. Wipe (Apex) 3705.8						
	3+00	110	101.6	8.4		C 12121		2859 Sanderson		1-7-69	Al Kenning	
		110	101.9	8.1								
		111	102.5	7.5	3+80							
	4+00	111	102.6	8.4								
	5+00	111	103.0	8.0								
		112	103.0	9.0	5+30							
LINE #9N	0+00	111	105.0	7.0	Existing MH							
	1+00	111	101.9	9.1								
		111	106.2	6.8								
	2+00	111	106.5	2.5								
		111	108.2	2.8	2+70							
LINE #9M	0+00	112	103.0	9.0	Existing MH							
	1+00	114	105.4	8.6								
	2+00	115	107.8	7.2								
	3+00	116	110.2	5.8								
		116	111.02	6.0	3+30							
					3+30 (K.C.O.)							

2000-01-310 - 3585 E Ross PKwy - 6/29/00 - A Good Plbr - 4" SCH 40 - Repair 15' of Line 6' from main - 2 Fernco, 1 TWIN CO

2001-03165 - 12/12/01 - 3700 E Sunnybrook - City Wide Plbr - 4" SCH 40 TWIN CO, 2045, Tied to clay tile
apx 1' from main

2004-03285 - 12/15/04 - 2809 S Davidson - Glover Enterprises - sp w/ 4" cap 29' 10" 4" mtl 5744-008, 4' 5" 8" main

95-3659-7 = 3-20-95 → 510 B
1376 - 10/25/91 (2847 S. Davidson) Bob Scott (4" SDR 35 tied into wye)
17' 5" 4" wpl