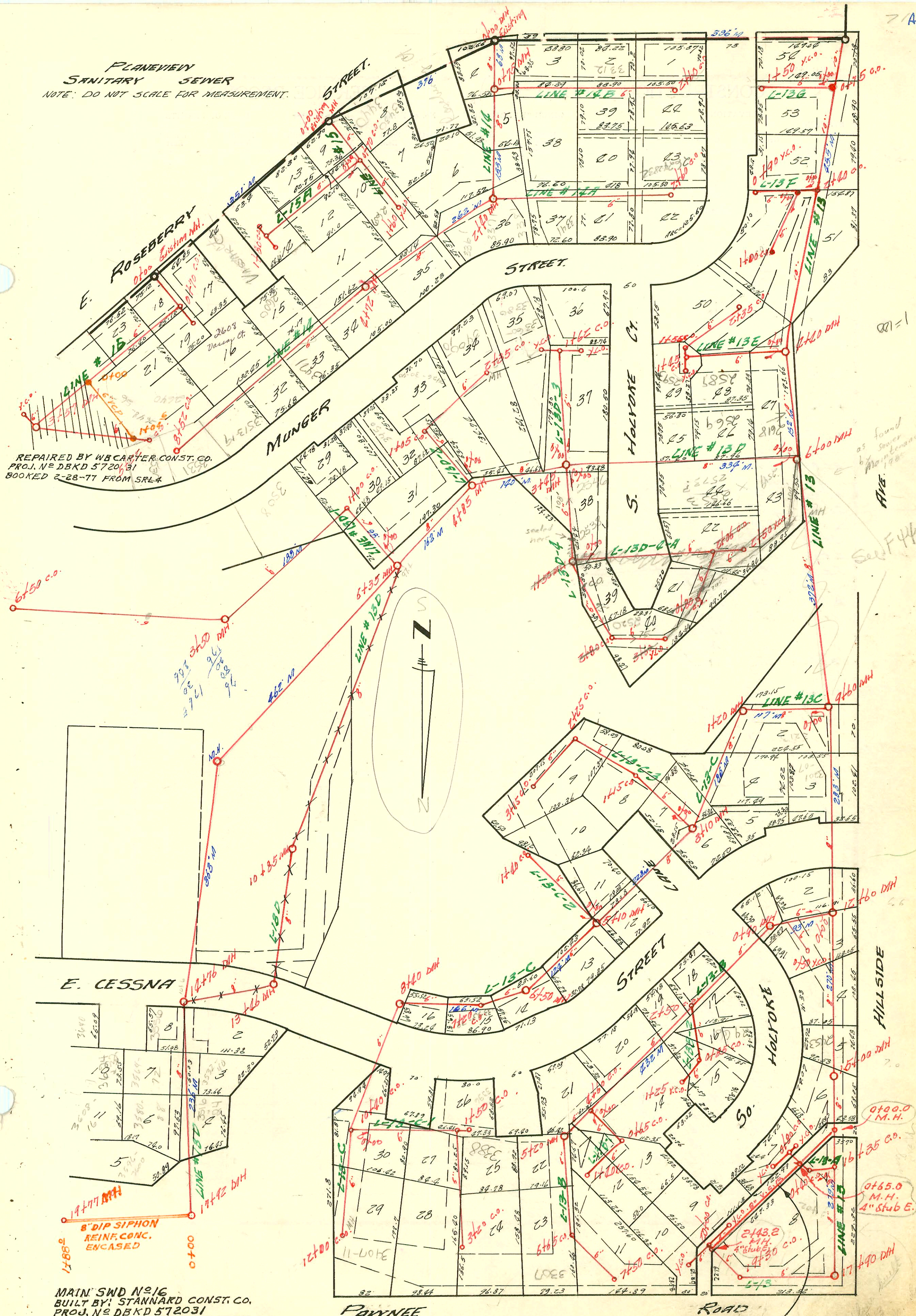
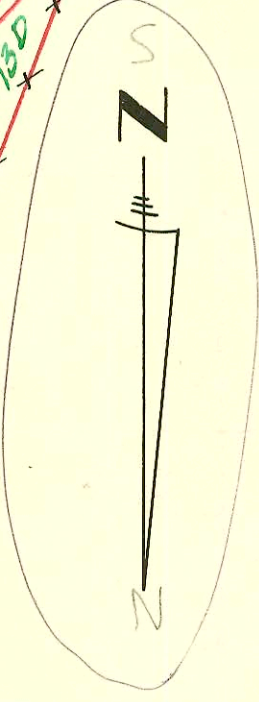


PLANEVIEW
SANITARY SEWER
NOTE: DO NOT SCALE FOR MEASUREMENT.



REPAIRED BY WBCARTER CONST. CO.
PROJ. NO DBKD 572031
BOOKED 2-28-77 FROM SRL4



MAIN SWD NO 16
BUILT BY STANNARD CONST. CO.
PROJ. NO DBKD 572031
BOOKED 3-10-78 FROM PLAN

RECONSTR. SAN. SEWER
S. E. COR. PAWNEE & HILLSIDE
I. H. NO. 62 PRIVATE CONT.
3-29-68

as found
by
Maintenance
1968
See F44

0100.0
M.H.
4" stub E.

0165.0
M.H.
4" stub E.

CONSTRUCTION RECORD

SERVICE RECORD

STATION	ELEVATION		Depth	MANHOLE	4-INCH "Y" BRANCHES		No. of Permit		House Number		DATE OF PERMITS	
	Ground	Grade			North West	South East	North West	South East	North West	South East	North West	South East
LINE #13	0+00	102	90.0	14.0	Existing MH							
		102	90.2	13.8		0+75						
	1+00	104	90.3	13.7								
	2+00	104	90.6	13.4								
		105	90.7	14.3		2+40						
	3+00	104	90.9	13.1								
	4+00	104	91.2	12.8								
		103	91.3	12.7	4+40							
	5+00	102	91.5	10.5								
	6+00	102	91.8	10.2	6+00							
	7+00	100	92.4	7.6		6+56.0	16557		2549 Walyoka		7-2-86	
	8+00	104	93.0	11.0								
	9+00	106	93.6	12.4								
		106	93.9	12.1	9+60							
	10+00	106	99.7	6.3		10+44	(repair) C35964		3207 Cessna		11-14-72	
	11+00	107	101.00	6.0		11+14	(repair) C12193		2457 E. Hollands		1-14-69	
	12+00	108	101.20	6.8								
		108	101.4	6.6	12+60							
	13+00	109	101.7	7.3								
	14+00	110	102.4	7.6								
15+00	110	103.0	7.0	15+00								
16+00	110	103.7	6.3									
	110	103.9	6.1		16+35							
17+00	110	104.6	5.8									
	109	104.9	4.1	17+90								
18+00	110	105.4	4.6									
19+00	114	109.9	4.1									
	116	117.51	5.0		19+30							
20+00	121	114.2	6.8		20+00							
Line #13-A	0+00	110	107.5	2.5	Existing co.							
		112	108.6	3.4		0+80						
		113	109.8	3.2		0+80						
Line #13-B	0+00	108	103.0	5.0	Existing MH							
		112	105.7	6.3	0+90							
	1+00	112	105.8	6.2								
	2+00	116	107.0	9.0								
		118	107.6	10.4		2+50						
	3+00	118	108.2	9.8								
	4+00	118	109.4	8.6								
		116	110.1	5.9		4+60						
	5+00	119	110.6	8.4								
		118	110.9	7.1	5+20							
Line #13-C	6+00	122	114.1	7.9				981837		3307 Pawnee	(1/3 of TR, elev down)	2-9-98
		124	116.7	7.3		6+65						
	7+00	124	118.1	5.9								
		124	120.1	3.9		7+50						
	0+00	105	99.4	5.6	Existing MH							
	1+00	106	99.8	6.2								
		106	99.9	6.1	1+20							
	2+00	107	100.2	6.8								
	3+00	107	100.6	6.4								
		107	100.7	6.3	3+10							
4+00	108	101.0	7.0									
5+00	109	101.4	7.6									
	109	101.5	7.5	5+10								
6+00	108	101.8	6.2									
	108	101.9	6.1	6+50								
7+00	109	102.0	7.0									
	109	102.1	6.9		7+20							
8+00	108	102.3	5.7									
	110	102.5	7.5	8+40								
9+00	108	102.7	5.3									
10+00	108	103.0	5.0									
	109	103.1	5.9		10+40							
11+00	109	103.3	5.7									
12+00	110	103.55	6.4		12+00							
Line #13C-1	0+00	109	103.07	5.9	Existing co.							
	1+00	111	107.9	3.1								
		112	109.3	2.7		1+50						
	2+00	114	110.1	3.9								
3+00	115	111.7	3.3									
	115	112.13	4.9		3+20 co.							
LINE #13B-1	0+00	116	113.9	2.1	Existing co.	3/4#01141	3617			Dunham 7-5-80 (Henning)	0+00	
		122	115.7	6.3						(50 is 60' w. of E. Property line)		
	1+00	123	118.9	6.1								
	123	118.0	5.0		1+40	3/4#01199	3025			Dunham 9-10-80 (Henning)	0+00	
LINE #13B-2	0+00	118	111.9	6.1						(Sealed at main 22' w. of E. Property line)		
		122	114.3	7.7		0+85						
	1+00	122	114.9	2.1								
	122	115.4	6.6		1+25	#1816	1-10-92	3373		E Cessna - McClung		

