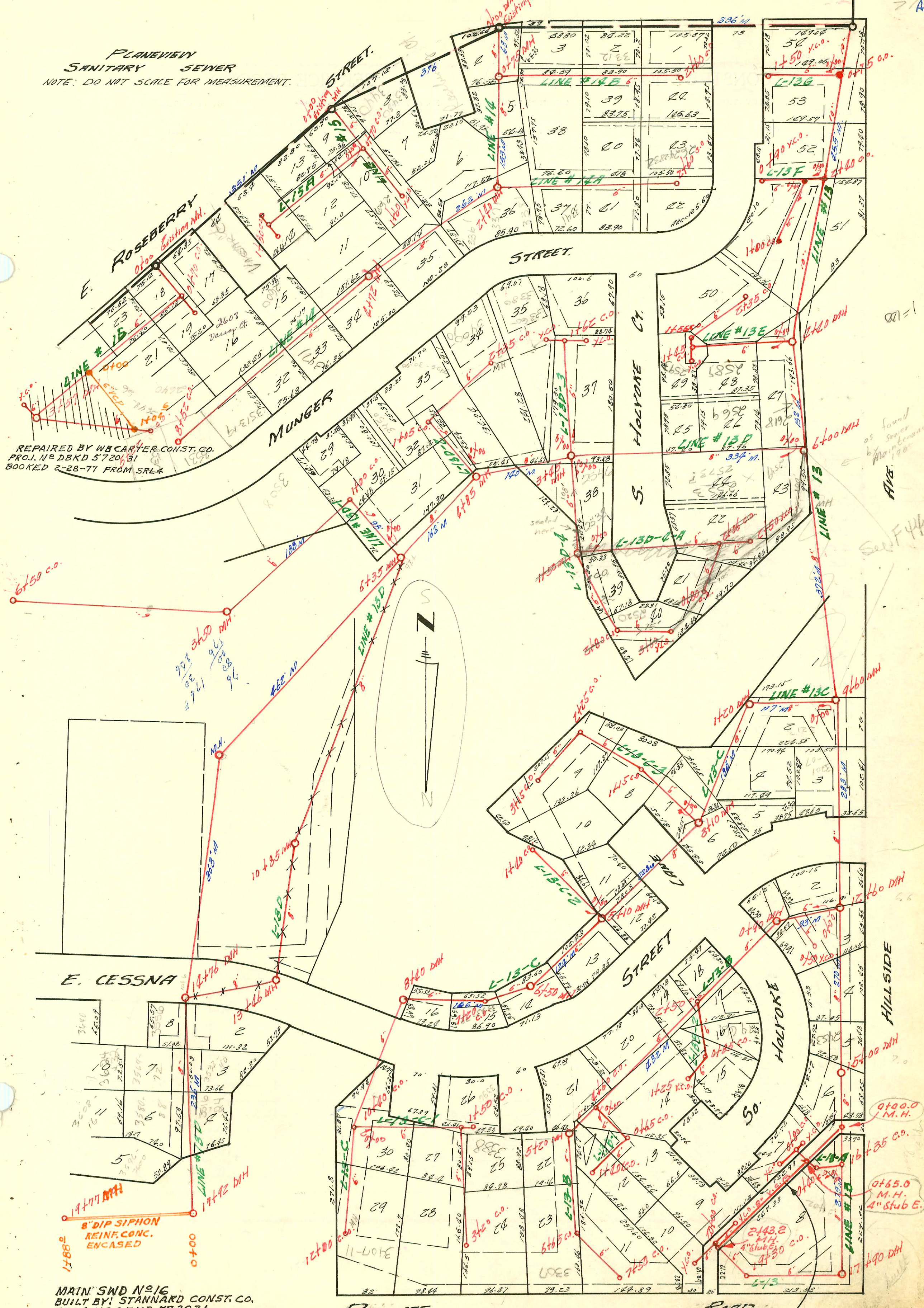


PLANEVIEW
SANITARY SEWER
NOTE: DO NOT SCALE FOR MEASUREMENT.



REPAIRED BY WBCARTER CONST. CO.
PROJ. NO DBKD 572031
BOOKED 2-28-77 FROM SRL4

MAIN SWD NO 16
BUILT BY STANNARD CONST. CO.
PROJ. NO DBKD 572031
BOOKED 3-10-78 FROM PLAN

RECONSTR. SAN. SEWER
S. E. COR. PAWNEE & HILLSIDE
I. H. NO. 62 PRIVATE CONT.
3-29-68

as found
by
Maintenance
1980
See F44

CONSTRUCTION RECORD

SERVICE RECORD

STATION	ELEVATION		Depth	MANHOLE	4-INCH "Y" BRANCHES		No. of Permit		House Number		DATE OF PERMITS	
	Ground	Grade			North West	South East	North West	South East	North West	South East	North West	South East
Line # 13C-2	0+00	109	104.2	4.8	Existing MH	Clean out						
	1+00	108	104.6	3.4								
		106	104.9	1.1		1+40 c.o.						
Line # 13C-3	0+00	107	103.0	4.0	Existing MH							
	1+00	106	103.5	2.5								
		106	103.6	2.4		1+50 c.o.						
	2+00	106	104.0	2.0								
		106	104.2	1.8		2+25 c.o.						
	3+00	106	104.5	1.5								
		106	104.6	1.4		3+15 c.o.						
Line # 13D	0+00	104	95.5	8.5	Existing MH							
	1+00	105	95.8	9.2								
	2+00	106	96.1	9.9								
	3+00	107	96.4	10.6								
		108	96.5	11.5	3+25							
	4+00	111	96.7	14.3								
		114	96.9	17.1	4+85							
	5+00	113	96.9	16.1								
	6+00	113	97.3	15.7								
		113	97.4	15.6	6+35							
	7+00	108	97.4	10.6								
	8+00	104	97.7	6.3								
	9+00	105	97.9	7.1								
	10+00	107	98.3	8.7								
		108	98.7	9.3	10+85							
	11+00	108	100.5	7.8								
	12+00	109	100.7	8.3								
	13+00	109	101.0	8.0								
		109	101.3	7.7	13+46							
	14+00	109	101.4	7.6								
		109	101.6	7.4	14+76							
	15+00	110	101.7	8.3								
	16+00	110	102.0	8.0								
	17+00	110	102.3	7.7								
		108	102.6	5.4	17+92							
	18+00	108	105.6	2.0	SIPHON							
	19+00	110	108.6	1.4								
		112	108.1	3.9	19+77							
		Continue on page										
Line # 13D-1	0+00	113	107.7	5.3								
	1+00	118	108.3	9.7		1+00 c.o.						
	2+00	118	108.8	9.2								
	3+00	118	109.3	8.7								
		113	109.5	3.5	3+50							
	4+00	114	110.0	4.0								
	5+00	114	111.0	3.0								
	6+00	124	112.0	12.0								
		124	112.4	11.4		6+50 c.o.						
Line # 13D-2	0+00	114	110.6	3.4	Existing MH							
	1+00	119	111.1	7.9								
		119	111.2	7.8		1+05 c.o.						
	2+00	119	111.6	7.4								
		118	111.8	6.2		2+35 c.o.						
Line # 13D-3	0+00	108	104.9	3.1	Existing MH							
	1+00	110	106.6	3.4								
		112	107.8	4.2		1+65 c.o.						
		40' Long W. Pipe 20" Dia. N. of Road 10' from line										
							17491					
									3360-80-560			
									MUNGER LN			
											12-17-86	
Line # 13D-4	0+00	108	100.1	7.9	Existing MH							
	1+00	106	101.2	4.8								
		109	101.7	7.3	1+50							
	2+00	108	102.3	5.7								
		107	103.1	3.9		2+80						
	3+00	106	103.4	2.6								
		106	104.0	2.0		3+60 x.c.o.						
Line # 13D-4-A	0+00	109	101.7	7.3	Existing MH							
	1+00	106	102.2	3.8								
	2+00	106	102.7	3.3								
		106	102.8	3.2		2+06 c.o.						
		106	103.0	3.0		2+50 x.c.o.						
Line # 13E	0+00	104	98.5	5.5	Existing MH							
	1+00	106	101.5	4.5								
		108	103.0	5.0		1+45 c.o.						
		108	103.0	5.0		1+55 c.o.						
	2+00	107	103.2	3.8								
		106	102.0	2.0		2+35 c.o.						

C59518

3360-80-560
MUNGER LN

12-17-86

491-36259-7 10/28/91
91-36445-7 10/31/91

3400 E. Munger St. McClung - slo at main
3410 E. Munger St. McClung - slo at main

074497 2538-46-54 S. Holyoke - 9-25-79 - Henning (49.0 N. of 0+0 MH)
22544-7 5/12/91 3520 E. Munger - Tim Lubbers -
93-29490-7 11-14-93 2520 S. Holyoke - 4" PVC 40' Replaced 6' section of line 9' from House 1/4" shallow

