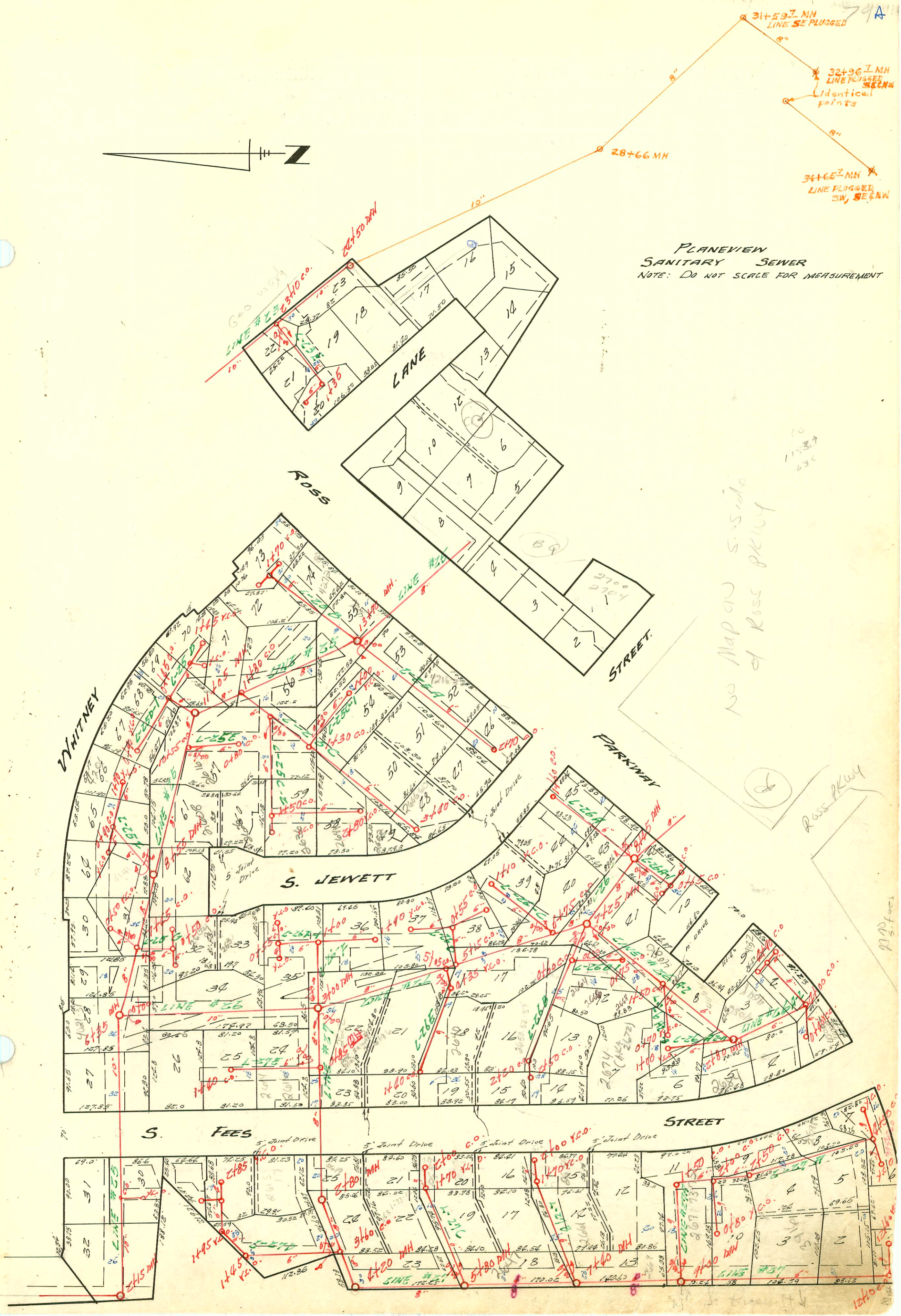


PLANEVIEW
SANITARY SEWER
NOTE: DO NOT SCALE FOR MEASUREMENT

NO MAP ON S. SIDE
of Ross PKWY

ROSS PKWY

90' 5' 0"



CONSTRUCTION RECORD

SERVICE RECORD

STATION	ELEVATION		Depth	MANHOLE	4-INCH "Y" BRANCHES		No. of Permit		House Number		DATE OF PERMITS	
	Ground	Grade			North West	South East	North West	South East	North West	South East	North West	South East
cont. LINE # 26												
8+00	120	114.0	6.0	7+25								
	121	115.5	5.5									
	122	116.23	5.8	8+45								
LINE # 26A	0+00	122	119.0	3.0	Existing MH							
	1+00	124	121.0	3.0								
		125	122.1	2.9								
LINE # 26A-1	0+00	122	119.1	2.9	Existing MH							
		123	121.2	1.8								
LINE # 26A-2	0+00	120	116.5	3.5	Existing MH							
	1+00	125	119.2	5.8								
		128	121.9	6.1								
	2+00	130	121.9	8.1								
		131	123.96	7.04	2+80							
	3+00	131	124.1	6.9		4" S.D.R. 35 3+51		94-11445-701		4056 E R Ross Parkway		7-28-94
	4+00	132	124.6	7.4								
		130	125.0	5.0								
LINE # 26A-2-A	0+00	132	128.6	3.4	Existing MH							
	1+00	133	129.6	2.4								
LINE # 26A-2-B	0+00	128	125.5	2.5	Existing c.o.			#C11864		2684 S. 3+20		12-6-68 priv. line conn. to 2762 S. 3+20
		131	127.0	4.0								
LINE # 26B	0+00	120	116.0	4.0	Existing MH							
		122	117.2	4.8								
	1+00	124	118.0	6.0								
	2+00	125	120.0	5.0								
		126	120.3	5.7								
		127	121.0	6.0								
LINE # 26B-1	0+00	122	119.0	3.0	Existing c.o.				11063			5-30-84
		124	121.0	3.0								
LINE # 26C	0+00	120	116.3	3.7	Existing c.o.							
	1+00	119	117.3	1.7								
LINE # 26D	0+00	120	117.5	2.5								
		118	113.5	4.5								
LINE # 26E	0+00	118	114.1	3.9								
		118	115.3	2.7								
	1+00	120	116.3	3.7								
LINE # 26F	0+00	122	117.0	5.0								
		114	111.8	2.2	Existing MH							
	1+00	115	112.3	2.7								
LINE # 26F-1	0+00	116	114.1	1.9								
		115	112.3	2.7								
LINE # 27	0+00	113	104.7	8.3	Existing MH							
		117	105.0	12.0								
	1+00	117	105.0	12.0								
	2+00	116	105.3	10.7								
	3+00	115	105.6	9.4	2+80							
		115	105.6	9.4								
	4+00	112	105.8	6.2								
		112	105.9	6.1								
	5+00	112	106.0	6.0	2+20							
		116	108.9	7.1								
	6+00	118	111.9	6.1	5+80							
	7+00	123	113.6	9.4								
		124	114.3	9.7								
	8+00	124	115.0	9.0	7+40							
	9+00	123	116.5	6.5	9+00							
	10+00	122	114.6	4.4								
	11+00	122	119.0	3.0								
	12+00	124	120.4	3.6								
		124	121.0	3.0								
LINE # 27A	0+00	121	123.5	2.5								
	1+00	123	116.5	6.5	Existing MH							
		126	118.5	7.5								
		128	119.5	8.5								
	2+00	128	120.6	7.4								
		127	121.7	5.3								
	3+00	127	122.6	4.4								
	4+00	128	124.6	3.4								
		129	125.5	3.5								

#85173 3928 Ross Parkway - Conn. at Y.C.O. west of 4+50 MH. on line 27A #27103 21991 2664 S. Fees - HENNING - 53' N of MH.
 C.11863 - 2684 S. Fees - Kendall Pkwy. 12-6-68 (2+54) 4" PVC Sch 40 House
 C.11864 - 2684 S. Fees (Conn. with 2684 S. Fees at 2182) 70 51' 48" man)

8-28-71 #18746 4069 E. Ross Parkway - Rep (4" PVC 40 24' w of EPL) 4" Clay tile line sealed off 9 ft west of
 #23280 - 61154 - 2684 S. Fees - HENNING (4+50) 1" PVC at 4 ft EPL and 25 ft south of MFL

S/o 2000-02043- 9115/00- ^{S/O} 26408 Fees- HD Hills- S/O at 98' -72' and 36' E of PL (This is a triplex- each line S/O)