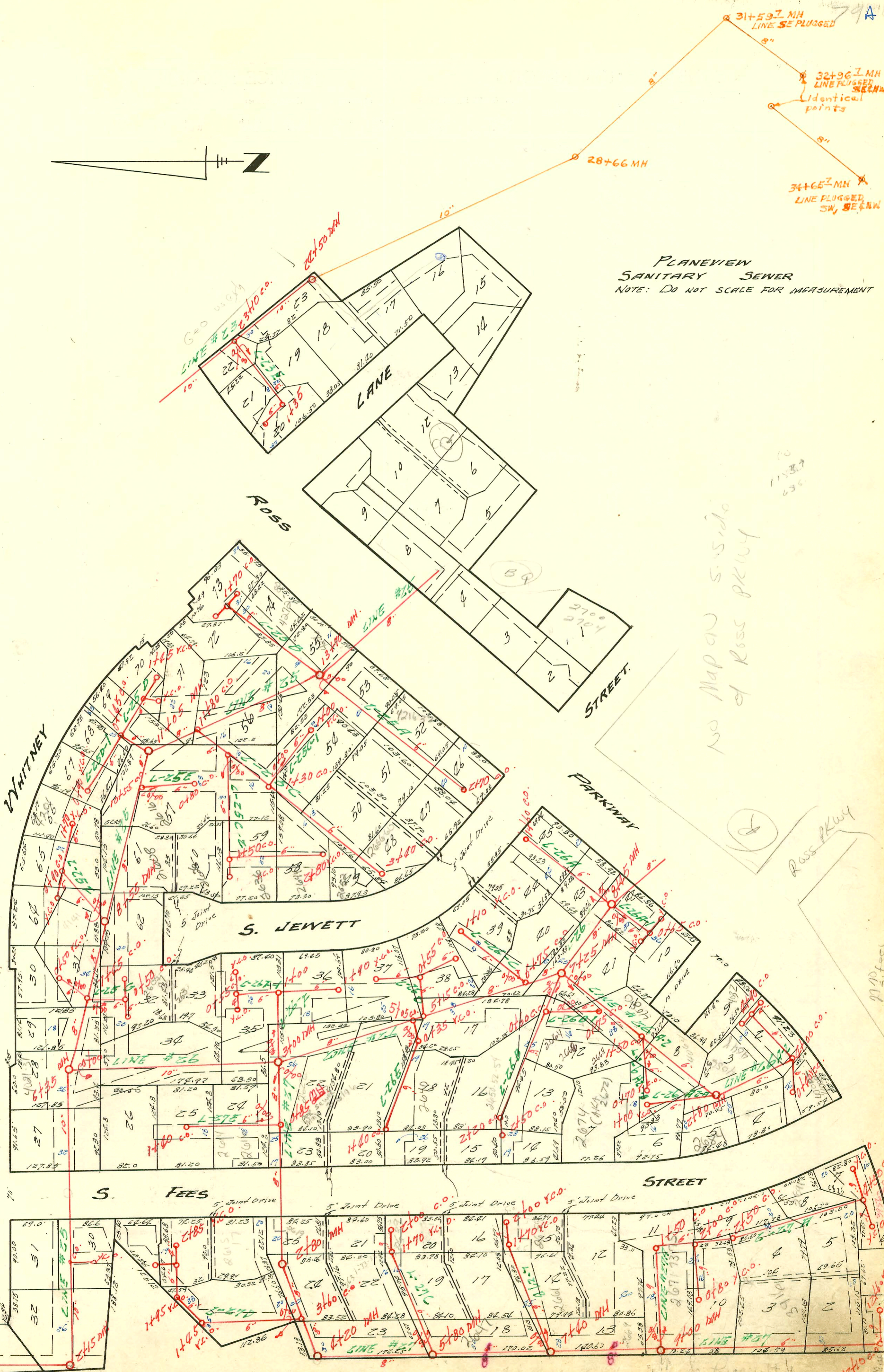


PLANEVIEW  
SANITARY SEWER

NOTE: DO NOT SCALE FOR MEASUREMENT



no map on S. side  
of Ross pkwy

Ross pkwy

770

1240

### CONSTRUCTION RECORD

### SERVICE RECORD

STATION	ELEVATION		Depth	MANHOLE	4-INCH "Y" BRANCHES		No. of Permit		House Number		DATE OF PERMITS	
	Ground	Grade			North West	South East	North West	South East	North West	South East	North West	South East
LINE # 27B	0+00	124	121.0	3.0	Existing MH							
	1+00	127	122.5	4.5								
		128	123.5	4.5		1+70	x.c.o.					
	2+00	129	124.0	5.0		2+00						
LINE # 27C	0+00	118	114.0	3.6	Existing MH							
	1+00	120	115.2	4.8								
		121	115.7	5.3		1+70	x.c.o.					
	2+00	123	116.0	7.0		2+00						
LINE # 27D	0+00	112	105.8	6.2	Existing c.o.							
	1+00	112	106.2	5.8								
		112	106.4	5.6		1+25	x.c.o.					
	2+00	112	106.6	5.4		1+95	x.c.o.					
LINE # 27E	0+00	112	109.0	3.0		2+85	x.c.o.					
	1+00	117	108.8	8.2	0+00 Existing	4" MH	upper sewer maint 2-6-96					
		113	109.3	3.7								
	2+00	112	109.5	2.5		1+40						

SWR 2000-02310 10-30-00 2700 S. Fees - AATH NO Leaks - (inst 4" SCH 40 CO

99-00827 10-4-94 2674 5 Fees - Rep  
94-11445-1 12-28-94 4056 (40 48) = Rep Ross Parkway - Mc (club)

#93-18425-7 7/14/93 - 3916 S. Ross Parkway - Henning - 4" Clay tile  
line sealed off 120 ft east of WPL and 21 ft south of NPL - 36  
#92-35299-7 10-9-92 2616 S. Fees Boardman - (4" SDR 35 tied to exist wye 62' S. of NPL)  
#92-35296-7 10-9-92 2614 S. Fees Boardman - (4" SDR 35 tied to exist wye 24' S. of NPL)

#91-38691-7 12/3/91 402 S. Whitney - Rep - (wye 4' W. of M.H. 4" SDR 35)  
#91-36258-7 10/17/91 4073 Ross Parkway (Repl. 3' of clay tile with 4" SCH 40 in yard)

#21466 8760 S. Roosevelt (add. to church) - (109' E. of MH)  
N/C #1519-2820 S. Roosevelt - 7-19-84 - Lloyd Drinner - (140' NE) private line BOE.  
2704

1908 - 2700 - Jannett 11-27-80 Francis Long - 710 Station #15 (wye Rep. 48' S. of MH)  
C47632 - 2819 Fees (Rothman in Park) 12-3-74 (M.H. top in 34+65.7)

#8128 - Top of 2760 S. Roosevelt - 7/1/86 - L. J. J. 11+27 (4" top 75' S. of M.H. E. of Roosevelt)  
#9216 - 2639 S. Fees (repair) 190' E. of 0+0 - lat 27 C (1+90) Lanny Carter Ref. 6/21/68

C13379 - 2704 S. Roosevelt (repair) private line - Robt. McGary - 3-31-69 (8" private line extended west from line 27 (M.H. 9+04)  
S/C 24-17-2612-49 Fees - J.C. McGary 5-15-71 (14+78) 13' #91-27824-9 7/23/91 2617 S. Fees - Keith Clark - (4" SCH 40 PVC (3+60.5 top)  
#26381 10/25/94 4272 - Hwy - Henning (3' S. of M.H. 15' E. of M.H.) #91-35202-7 10/15/91 2659 S. Fees - McClung - 8' of pipe at N. end