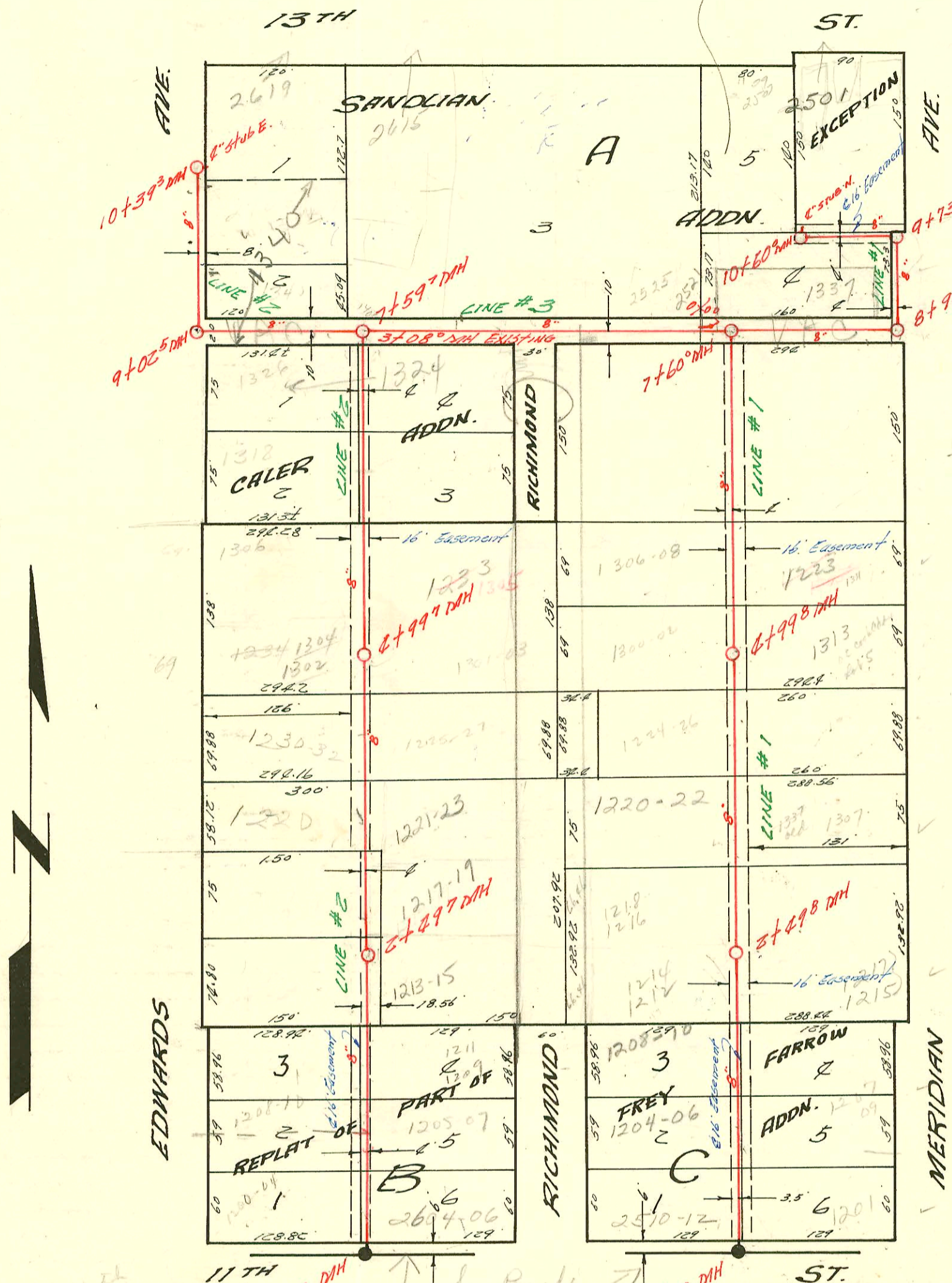


bid known as 2505-2507  
w/ called 1 new  
bidg const. Must  
stop at Mt. Ave  
in stall new  
service line  
7/8/68  
BR



was 12 24

0+00 DM Existing

See Book H-131 for conn. in submain 1-29-71

0+00 DM Existing

1242

LAT. 1 SUB. 12 S.S. 22  
UTILITY CONTRACTORS INC. 14 MAY 57  
BK NO. K-27 FROM NO C26-AC  
FILE NO 6-1-2-14

201-00366-212061-2501 w 13th - Padgett Exc - 4" sch 40, 34' from 4 from house to within 34' of city  
Main 15 sch 40, - clay onto main - ITWIN CO, 1022, 1045

### CONSTRUCTION RECORD

### SERVICE RECORD

LINE #1

LINE #2

LINE #3

STATION	ELEVATION		Depth	MANHOLE	4-INCH "Y" BRANCHES		No. of Permit		House Number		DATE OF PERMITS	
	Ground	Grade			North West	South East	North West	South East	North West	South East	North West	South East
0+00	117.7	108.65	9.1	Existing MH.	+29°	+27°						
1+00	116.7	109.05	7.6		+90°	+88°	C 50436		1204-04 N. Richmond		7-21-75	
2+00	115.9	109.45	6.4	Tap	+46°	+40°	C44970		1208-10 N. Richmond	1215-17 N. Meridian	5-21-74	10-4-62
3+00	116.5	109.65	6.8	2+498	+15°	+13°	C8337	C16207				
4+00	116.9	109.85	7.0		3+05°	Tap	C9011		1216-1P N. Richmond		6-7-68	
5+00	115.6	110.25	5.3		2+39°	+37°	C50437		1229-22 N. Richmond		7-21-75	
6+00	117.4	110.65	6.7	2+998	4+79°	+17°	96-20177 C38982		1224-26R N. Richmond	1313 N. Meridian	12-5-96 5-14-73	7-16-65
7+00	117.9	111.05	6.8		4+78°	+81°	C39464		1300-02 N. Richmond		6-11-73	
8+00	117.7	111.05	6.2		Tap 5+49.8	+30°	10481		1306-08 T. Lehigh	1323 N. Meridian	6-8-59	
9+00	117.4	111.81	5.7	7+60°	+56°	+30°	C50568	C50569	1306-08 T. Lehigh	1325 N. Meridian	10-1-57	7-29-75
10+00	117.0	111.95	5.9		Tap 7+11°	+30°			1306-08 T. Lehigh	1325 N. Meridian	5-14-73	7-29-75
11+00	118.0	112.39	5.7	8+96°	+91° (N.N.)				1325 N. Meridian	1325 N. Meridian	9-29-77	
12+00	118.2	112.83	5.37	9+73°								
13+00	117.9	112.95	6.9		9+83° (N.N.)							
14+00	116.6	113.17	3.4	10+60°	9+97° (N.N.)							
15+00	117.0	109.60	7.4	Existing MH								
16+00	116.3	110.00	6.3		+31°	+29°	C26577		1200-04 N. Edwards		8-17-71	
17+00	117.1	110.40	6.7		0+86°	+84°	C26374	C48724	1208-10 N. Edwards	1205-07 N. Richmond	8-11-71	3-19-75
18+00	117.5	110.60	6.9	2+497	+278°	+458°	C-36022 4706	C15172	1209-11 N. Richmond	1209-11 N. Richmond	1-24-72	7-30-69
19+00	117.7	110.80	6.9		+45°	+16.0°	C33943	C39128	1212 N. Edwards	1213-15 N. Richmond	7-28-72	5-22-73
20+00	118.5	111.20	7.3		+82°	+28.0°	C39130		1216 Edwards	1217-19 N. Richmond	5-21-57	5-22-73
21+00	119.6	111.60	8.0	2+997	+50°	+038°	C39129		1231-23 N. Richmond			5-22-73
22+00	120.4	112.00	8.4		+34°	+35°	C32544	C38984	1230-32 N. Edwards	1225-21 N. Edwards	5-31-72	5-14-73
23+00	121.4	112.40	9.0		+82°	+80°	47212	C40286	1302-04 N. Edwards	1302-04 N. Edwards	3-7-68	7-26-73
24+00	120.9	112.69	8.3	7+597	+43°	+41°			1305 N. Richmond			3-31-60
25+00	121.5	112.90	8.6		+258°	+238°						
26+00	119.8	113.31	6.5	9+02°	+07°	+05°						
27+00	121.2	113.80	7.4		+07° (N.N.)				1340 N. Edwards		8-15-67	7-1-63
28+00	119.9	113.96	5.9	10+39°	+337°	+76°						
29+00	116.8	111.75	5.0	Existing MH	9+76°	+86.3°						
30+00	117.3	112.39	4.9		+29°							
31+00	117.3	112.99	4.3		+03°	+66°						
32+00	120.6	113.6	7.0	Existing MH	2+276°	Tap (2+31)	C3989		0615 W. 13th	1324 N. Edwards	9-19-60	7-18-67

465-3 - 1326 N. Edwards - Tap - B. Lee - 8-21-57  
 5095 1335 N. Meridian Tap Daley 8-14-57 (10+04.3)  
 5213 Tap - 1337 N. Meridian Daley 8-22-57  
 #10819 tap 12705 W. 13th Powers Bldg 7-7-59 10+26.3  
 #13715 tap - 2507-09-11 W. 13th New Yorker Bldg. 12-28-60  
 #14711 ed. m. - 1335 N. Meridian - Richard La Jay Bldg 9-21-61 (10+10.9)  
 #16027 tap - 2521 W. 13th - Vernon Lippoldt 8-15-62 - (0+22) Line 3  
 #16645 - 1271 N. Edwards - Keith Fuller 8-22-63 (78' E. of 11th) tap  
 #16765 - 2612 W. 13th - De Colby - 3-13-63 Tap (1+73.0 Line 3)  
 #17064 tap 1337 N. Meridian - Ed Robertson Bldg 5-6-63 (7+47)  
 #17063 tap 1337 N. Meridian - Ed Robertson 5-6-63 (8+08)  
 #B-89 - tap 1207-09 N. Meridian - Jayhawk Bldg 9-5-63 (0+91)