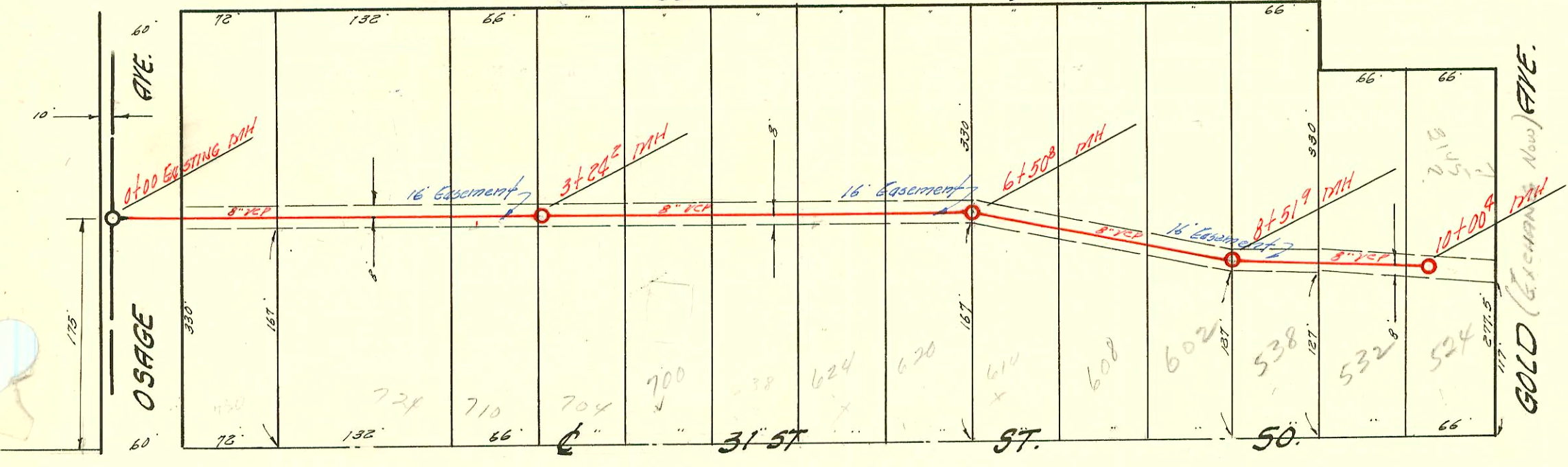


SL ROBSON HEIGHTS ADDN 7

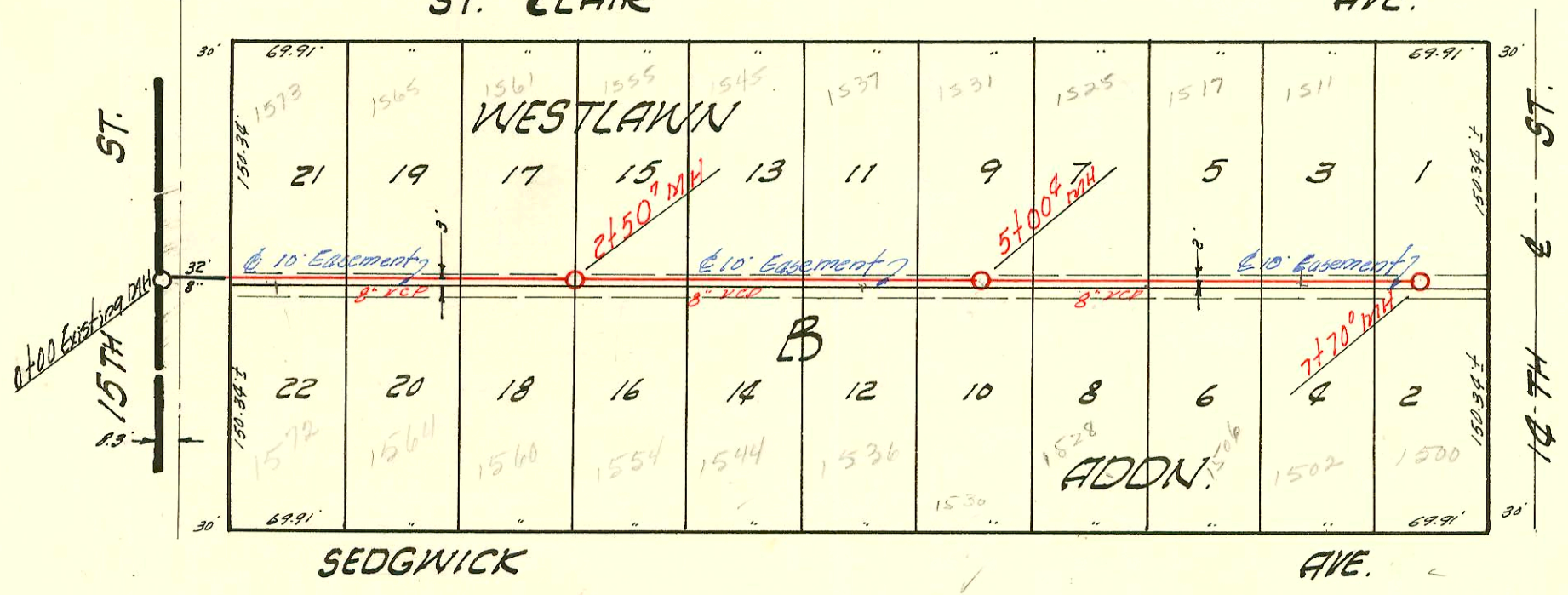


LATERAL 8 SUBMAIN 4 S.S. 22
 L. C. PEDDICORD, CONTR., DEC. 2 '57
 BK. NO. K-19 PROJ. NO. C26-22



ST. CLAIR

AVE.



LATERAL 9 SUBMAIN 13 S.S. 22
 W. B. CARTER CONSTR. CO. DEC. 2 '57
 BK. NO. K-31 PROJ. NO. C26-103.



LAT. 8 SUB. 4 S.S. 22

CONSTRUCTION RECORD

SERVICE RECORD

STATION	ELEVATION		Depth	MANHOLE	4-INCH "Y" BRANCHES		No. of Permit		House Number		DATE OF PERMITS	
	Ground	Grade			North West	South East	North West	South East	North West	South East	North West	South East
0+00	95.4	88.26	7.1	Existing 17th	+74 ⁵	+76 ⁵	#5802		120 W. 31st St.			12-4-57
1+00	95.3	88.46	6.8		+85 ⁷ (6")	+94 ⁶ (6")	#23488 5831	#25484 5878	7th W. 31st St. B	old conn for sewer	17-9-57	6890 18-9-57
2+00	95.2	88.66	6.5		+72 ⁰	+74 ⁰	#2889		710 W. 31st St.			2-25-65
3+00	94.4 94.1	88.86 88.91	5.5 5.2	3+24 ²	+31 ⁰	+33 ⁰	#15421		204 W. 31st St.			11-4-62
4+00	94.5	89.06	5.4		+100 ⁰	+102 ⁰	#7610 #5790		700 W. 31st St. B			8-1-58 12-2-57
5+00	95.2	89.26	5.9		+66 ⁵							
6+00	94.8	89.46	5.3		+36 ³	+38 ³	5917		624 W. 31st St. B			12-19-57
	95.0	89.56	5.4	6+50 ⁸	+05 ⁹	+07 ⁹	95143207 5809		620 W. 31st St. B			9-13-55 12-5-57
7+00	95.5	89.66	5.8		+68 ⁰	+70 ⁰	5916		614 W. 31st St. B			12-19-57
8+00	95.7	89.86	5.8		+42 ²	+44 ²	8142		608 W. 31st St. B			9-17-58
					+02 ⁵							
	95.7	89.96	5.7	8+51 ⁹		+19 ⁰	#5639		602 W. 31st St. S			11-15-57
9+00	95.6	90.06	5.5			+85 ⁵	#5658 #5644		588 W. 31st St. S			10-7-51 11-26-57
					+14 ⁷							
					+49 ⁶	+51 ⁶	#5643		580 W. 31st St. S			11-26-57
10+00	96.0	90.26	5.7	10+00 ⁴	+94 ⁴	+96 ⁴	#5642		580 W. 31st St. S			11-26-57

LAT. 9 SUB. 13 S.S. 22

STATION	ELEVATION	Depth	MANHOLE	4-INCH "Y" BRANCHES		No. of Permit		House Number		DATE OF PERMITS		
				WEST	EAST	North West	South East	North West	South East	North West	South East	
0+00			Existing 17th	+70 ⁰	+67 ⁰	5815	5682	1572 N. Sedgwick	1578 N. Plain	12-6-57	12-4-57	
1+00	118.5	111.13	7.4	+27 ⁰	+44 ⁰	5816	5683	1564 N. Sedgwick	1565 N. Plain	12-6-57	12-4-57	
2+00	118.1	111.43	6.7	+98 ³		5817		1540 N. Sedgwick		12-6-57		
	118.5	111.58	6.9	2+50 ⁷	+17 ³		5684		1561 N. Plain			12-4-57
3+00	118.7	111.73	7.0		+72 ⁵	5818	5685	1557 N. Sedgwick	1555 N. Plain	12-6-57	12-4-57	
4+00	118.2	112.03	6.0		+96 ⁵							
					+49 ⁰		5819		1544 N. Sedgwick			12-6-57
					+74 ⁰	+18 ⁰	5820	5687	1526 N. Sedgwick	1537 N. Plain	12-6-57	12-4-57
5+00	119.1	112.33	6.8	5+00 ⁴	+78 ⁰	+71 ⁰	9446	5688	1530 N. Sedgwick	1531 N. Plain	3-3-59	12-4-57
					+38 ⁵	+49 ⁵	5846		1528 N. Sedgwick		12-11-57	
6+00	118.8	112.63	6.2		+17 ⁰		5689		1505 N. Plain			12-4-57
					+27 ⁰	+91 ⁰	5690		1506 N. Sedgwick		12-26-57	
7+00	118.5	112.93	5.6		+97 ⁰		5822		1517 N. Plain			12-4-57
	118.9	113.14	5.8	7+70 ⁰	+59 ⁰	+57 ⁰	5821	12748	1502 N. Sedgwick	1501 N. Plain	12-6-57	5-9-60

5686 - 1545 N. Plain - 12-5-57
 5819 - 7th W. 31st St. - Henning 12-9-57
 #13062 - 7th W. 31st St. - 624 W. 31st St. - Sedgwick Pkg. 7-6-60