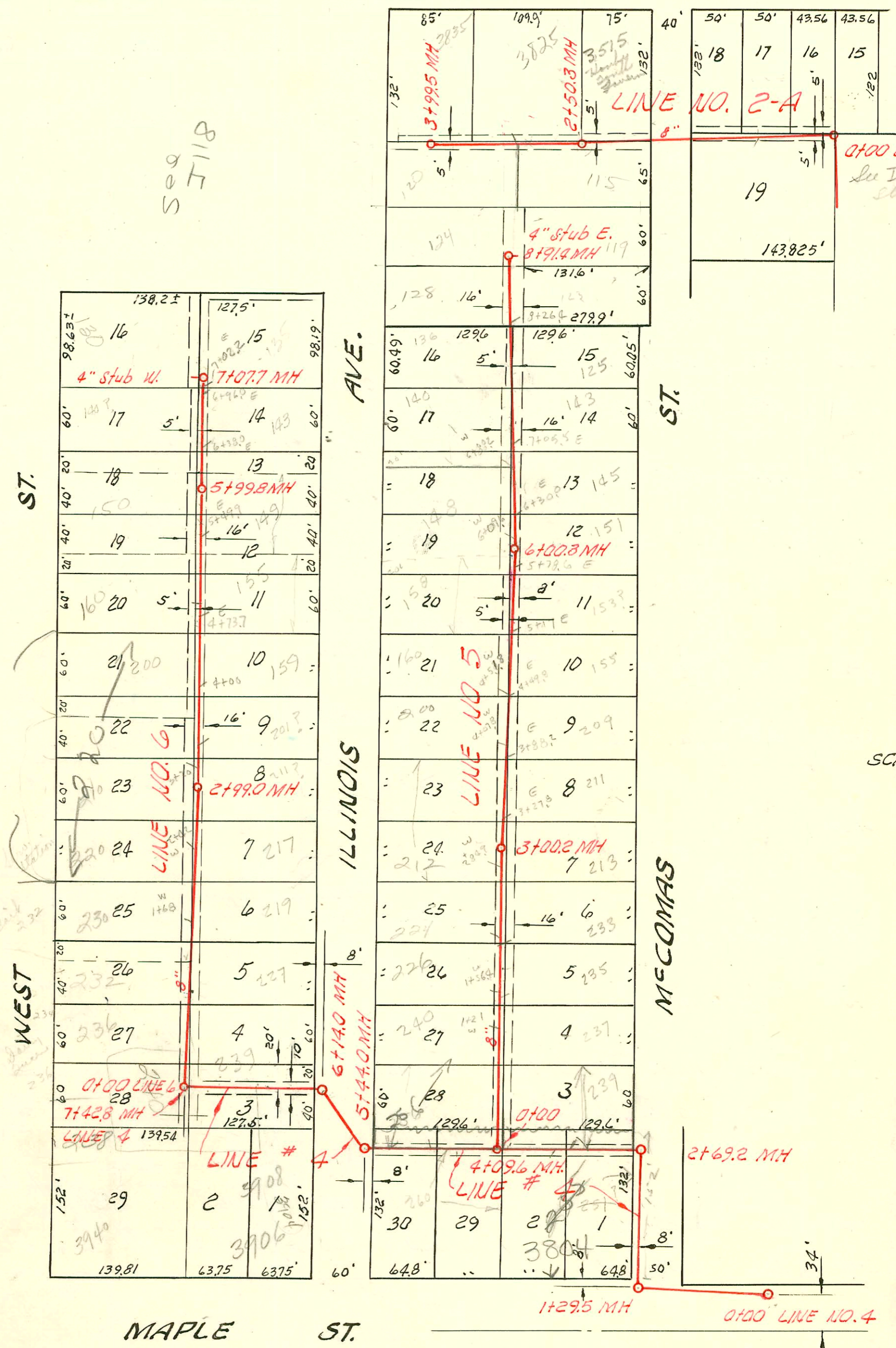


DOUGLAS AVE.



Seg 7118

0+00 LINE 2-A
See I-127 for
stations

SCALE 1"=100'

- 90-# 9299 - 238th S. West - Frank Meloy 3-2-59 (top MH. 7+42.8)
- # 9724 - 3940 Maple - Frank Meloy 3-17-59 (top MH. 7+42.8)
- # 12714 - 232 S. West - Fredrick Kelly 4-6-60 top - (1+35 line 6)
- # B2825 - 226 S. West - Hawk Pkg 2-2-65 top (2+04)
- # B3340 - 232 S. West - Hawk Pkg 5-5-65 Seal off (1+35 line 6)

NOTE:
See title block on pg. 127

CONSTRUCTION RECORD

SERVICE RECORD

LINE # 4
Continued

LINE # 5

LINE # 6

STATION	ELEVATION		Depth	MANHOLE	4-INCH "Y" BRANCHES		No. of Permit		House Number		DATE OF PERMITS		
	Ground	Grade			North West	South East	North West	South East	North West	South East	North West	South East	
						4+20.0				260 S. Illinois		3-4-68	
					4+75.8	4+50.2	#6609	C7121	356 Illinois			4-10-56	
5+00	117.4	109.80	7.6										
	116.2	109.89 out	7.3										
6+00	116.3	109.99 in	6.2	5+44.0					390 W Maple			11-24-81	
	116.7	110.10	6.2	6+14.0									
		110.13	6.6	6+14.0									
7+00	116.4	110.40	6.0										
						6+56.7		12391		3906 S Maple		10-25-84	
	116.3	110.50	5.8	7+42.8		6+66.3	7038	1298	239 S Illinois	240 S West		3-2-59	
					WEST	EAST						12-27-84	
0+00	116.7	109.70	7.0	0+00 = 4+09.6 in LINE 4									
						0+97.5		#6812		237 S. McComas		5-6-58	
1+00	117.0	109.92	7.1										
					4" SCH 40 - COOLIDGE								
					1+21.0								
					1+56.4	1+54.4	#6547	6735	2000-0045 2000-0256	200 S R Illinois	235 S. McComas		3-11-00 4-9-58
2+00	117.2	110.12	7.1										
						2+05.7		#6235		233 S Illinois		4-9-59	
					2+11.9								
					2+84.9	2+82.9	#6546	6434	221 S Illinois	213 S Illinois		4-11-58 4-8-58	
3+00	116.7	110.32	6.4	3+00.2									
						3+27.8		#6453		245 S Illinois		4-3-58	
					3+46.6								
						3+88.2		#6333		207 S McComas		4-3-58	
4+00	117.2	110.52	6.7										
					4+07.8		#6545			200 S. Illinois	155 S	4-8-58	
					4+51.8	4+49.8	#6544	6532	160 S. Illinois	115 S		4-8-58	
5+00	117.5	110.72	6.8										
						5+17.0		8541		153 S McComas		10-31-58	
					5+36.0			11758	#6680	158 S Illinois	151 S McComas	10-27-59	
6+00	117.2	110.92	6.3	6+00.3									
					6+09.6		#6473			148 S Illinois		4-3-58	
						6+30.0		#6225		145 S McComas		4-4-58	
					6+88.2	6+86.2	#6538	6474	200-0233 140 S R Illinois	143 S. McComas		12-31-01 4-4-58	
7+00	116.6	111.12	5.5										
					7+58.5	7+60.5							
					8+24.4	8+26.4	7701	#6483	136 S Illinois	123 S McComas		8-4-58	
					8+72.9		81602		128 S Illinois			7-2-64	
	117.2	111.50	5.7	8+91.4	4" Stub E		10976	#6456	124 S Illinois	119 S. McComas		5-8-58	
0+00	116.2	110.64	5.6	0+00 = 7+42.8 in Line 4									
					0+11.7					240 S West St		12-27-84	
						0+37.0				236 S West St		5-16-58	
					0+71.0		12611			234 S West St		9-11-58	
					0+98.0	0+98.5	13868			275 S West St		12-29-01	
1+00	116.5	110.85	5.7							275 S West St		12-27-84	
					1+68.0	1+66.0	6556	6810	2001-03108 230 S West St	219 S Illinois		12-29-04	
2+00	117.1	111.05	6.0										
					2+21.0			9702		217 S Illinois		4-8-58	
					2+42.0					220 S West St		8-27-84	
					2+89.0					211 S Illinois		3-13-59	
3+00	117.5	111.25	6.2	2+99.0									
					3+20.0					211 S Illinois		2-2-61	
					3+42.0					210 S West St		2-2-61	
					4+02.0	4+00.0				201 S Illinois		4-8-58	
					4+73.7					159 S Illinois		8-12-58	
4+00	117.3	111.45	5.8							200 S West St		8-29-62	
					4+83.8					200 S West St		8-11-70	
					5+49.9					155 S Illinois		4-11-58	
5+00	117.7	111.63	6.1							150 S West St		12-6-58	
					5+59.9					100 S West St		7-8-58	
					6+40.0	6+38.0				149 S Illinois		5-7-97	
					6+96.0					150 S West		4-3-58	
6+00	116.9	111.85	5.0	5+99.8									
					7+04.7	7+02.0							
					7+07.7	4" Stub W.							
7+00	116.7	112.05	4.6										
					6+40.0	6+38.0	11490	#6459		140 S West St	143 S Illinois		7-17-84
					6+96.0		7218						6-23-58
7+00	116.7	112.05	4.6										
					7+04.7	7+02.0	11703						8-7-84
	117.3	112.08	5.2	7+07.7									

#6641 by ... 4-14-58
 77447 ... 11 B 486 2 ...
 B2220 - 226 S West - ... 2-8-65 ...
 90 #01223 (130 S West St) ... 10-16-80 (4+07.7)

2000-02561-112100 Perry's Swr - 4" scd 40- Soil pipe extension - Replaced 10' of line - TURN CO

EY 6495 1155 4-7-58
 1155 1155 1155

99-82 #6501 220 S West (Hardee's Rest) 4" ABS - city tap at 22 FT N. of 2+99MT