

\* NOTE Continues north  
see BK I 152

ST. LOUIS & SAN. FRANCISCO R.R.

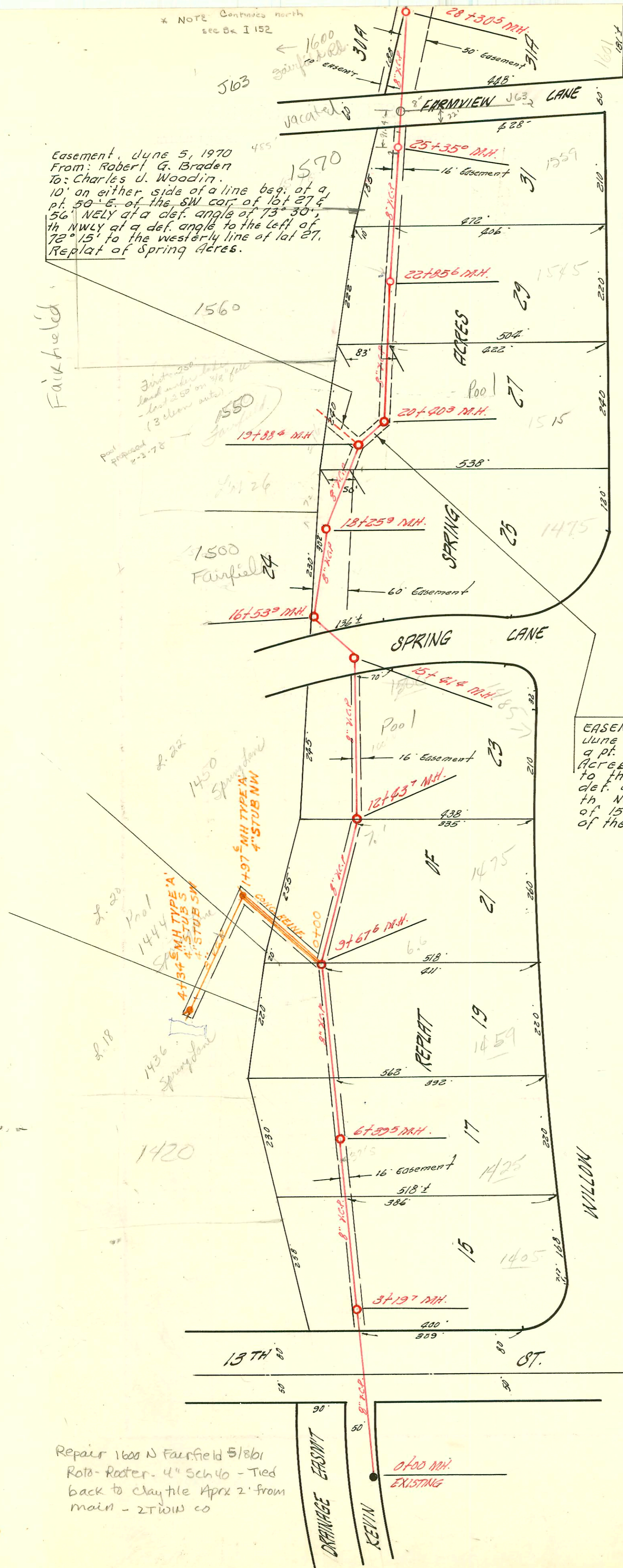
I 140

Easement, June 5, 1970  
From: Robert G. Braden  
To: Charles U. Woodin.  
10' on either side of a line beg. at a pt. 50' E. of the SW cor. of lot 27 & 56' NELY at a def. angle of 73° 30', th NWLY at a def. angle to the left of 72° 15' to the westerly line of lot 27, Replat of Spring Acres.

Fairfield

Out of City  
Parade 12-9-68

1-140



EASEMENT: To City of Wichita. From Robert G. Braden June 5th, 1970. 10' on either side of a line beg. at a pt. 50' E. of the SW cor. of lot 27. Replat of Spring Acres, Wichita, Sedg. Co., Ks.; th NELY at a def. angle to the left of 73° 30', a dist. of 56'; th NELY at a def. angle to the Rt. of 29° 39', a dist. of 52.5'; th NELY at a def. angle to the Lt. of 43° 29', a dist. of 152' to a pt. on the N.L. of sd. lot 27 and 83' E. of the NW cor. of sd. lot 27.

EXT. LAT. 49A D.C.S #2 S.S. 12  
PRIVATE JOB.  
BK. NO. K-56 16 MAY 1958

all of Spring Acres Parcel for  
The same no separate fee  
required. Lots on Fairfield  
must show same as this check  
with plat with the DeLena & Wilton  
2-24-70

\* SAN SEWER EXTENSION TO LOTS  
18-20-22 REPL SPRING ACRES  
BUILT BY: UTILITY CONT. INC.  
PROJ. N° DBKW 705033  
BOOKED 10-13-75 FROM PLAN

Repair 1600 N Fairfield 5/8/61  
Roto-Rooter. 4" Sch 40 - Tied  
back to clay tile Aprx 2' from  
main - ZTWIN CO

DRAINAGE EASMENT  
KEVIN

4000 M.H.  
EXISTING

