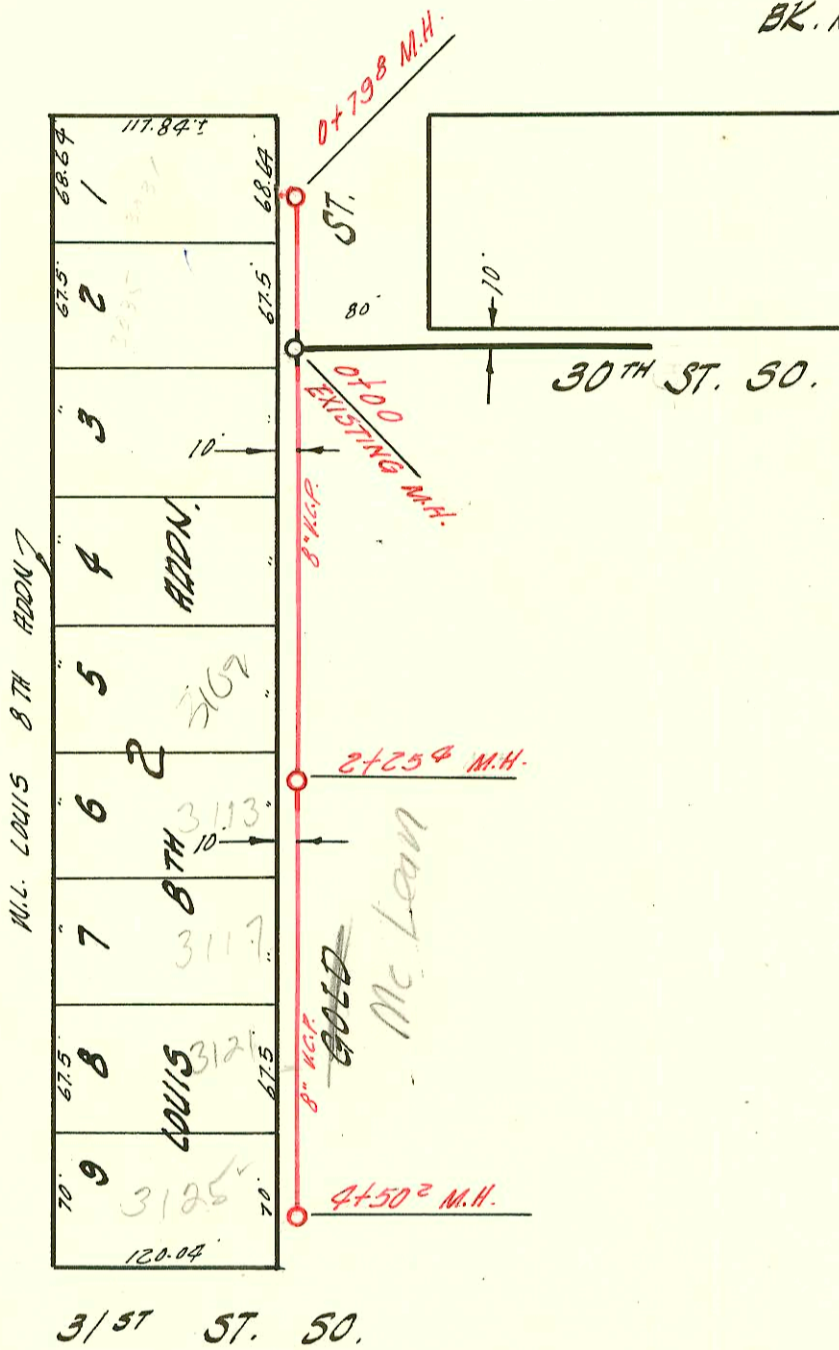


See CBA
Master series for
correct meas.

LATERAL 45 SAN. SEWER 22
W.B. CARTER CONST. CO. 6-9-58
BK. NO. K-45A PROJ. NO. C28-9



LATERAL 46 SAN. SEWER 22
W.B. CARTER CONST. CO. 6-9-1958
BK. NO. K-45A PROJ. NO. C28-10



CONSTRUCTION RECORD

SERVICE RECORD

STATION	ELEVATION		Depth	MANHOLE	4-INCH "Y" BRANCHES		No. of Permit		House Number		DATE OF PERMITS	
	Ground	Grade			North West	South East	North West	South East	North West	South East	North West	South East
0+00	93.2	88.10	5.1	EXISTING M.H.		Mit TAP		17920		222 W 30th St		31257
					+10°							
					+75°							
1+00	93.2	88.26	4.9		+40°							
2+00	93.2	88.41	4.8		+077							
					+738							
3+00	93.0	88.56	4.4	2+876	stub s		98-23753-7		314 W 30th St	12-9-98		
					3+26 TAP		16250		30th St	5-11-59		
4+00	93.6	88.71	4.9		+40°							
					+036							
					+70°							
5+00	93.6	88.86	4.8		+358							
	93.6	88.98	4.6		stub s.							
	89.08 (Stub)	9.5		5+807								
6+00	93.6	89.01	4.6		+038							
					+698							
7+00	94.0	89.16	4.8		+366							
					+956		#7179		514		6-9-58	
							#7178		30 St. 50			
									510		6-9-58	
									30" St. 50			
8+00	95.3	89.31	6.0		+7956				506		6-9-58	
					+666		#7177		30" St. 50			
	96.1	89.92	6.7		stub s.							
	89.52 (Stub)	6.6		8+758								
9+00	96.2	89.46	6.7		+288		#7176		502		6-9-58	
									30" St. 50			
10+00	96.7	89.61	7.1									
	96.73	89.81	6.9	10+657	8" stubs N&S							
0+00	96.8	89.80	7.0	Existing M.H.	"Y" West							
					+626		#7173		3101		6-9-58	
1+00	96.4	89.96	6.4		+303				S. Gold			
					+268		#7172		3105		6-9-58	
							#7171		3109		6-9-58	
									S. Gold			
2+00	96.4	90.11	6.1									
	96.3	90.15	6.1	2+254								
					2+674		#7170		3112		6-9-58	
3+00	96.2	90.26	5.9						S. Gold			
					3+336		#7599		3125 R		6-9-58	
							#7164		S. Gold			
4+00	96.2	90.41	5.8		3+752							
					+045		22528		3121 St		2-181	
					+390		#8047		3102 St		9-15-58	
							#7169		3103 St		6-9-58	
	96.1	90.49	5.6	4+502								
0+00	96.8	89.82	7.0	Existing M.H.	+124		#7174		3085		6-9-58	
					+620		#7175		S. Gold		6-9-58	
	96.8	89.93	6.9	0+798					S. Gold			

98 23753-7 12-9-98 314 W 30th St 50 Lubbers - NO INSP INFO TURNED IN
 SOR 2002 0036 2-2-02 314 W 30th St S. Lubbers

- 7176 Tap 502 W 30th to Kennedy 6-9-58
- 7173 Tap 3101 S. Gold Kennedy 6-9-58
- 7174 Tap 3025 S. Gold Kennedy 6-9-58
- 10103 Tap 306 W 30th to Robert J. 4-14-59 1+98.6
- 10104 Tap 310 W 30th to Robert J. 4-14-59 2+61.1
- 9700 Tap 414 W 30th to Robert J. 3-27-59 6+53.2
- 9699 Tap 410 W 30th to Robert J. 4-3-59 5+90.2
- 10250 Tap 314 W 30th to Kennedy 5-11-59 3+26.6
- 10251 Tap 318 " " " " 3+85.6
- 10252 Tap 402 " " " " 4+60.6
- 10253 Tap 406 " " " " 5+23.7
- 10591 Tap 226 W 30th " " " " 6-10-59 1+31.6
- 10969 Tap 302 W 30th to Robert J. 7-21-59 1+10
- 10968 Tap 222 W 30th to " " " " 7-28-59 M.H. 0+00 see above