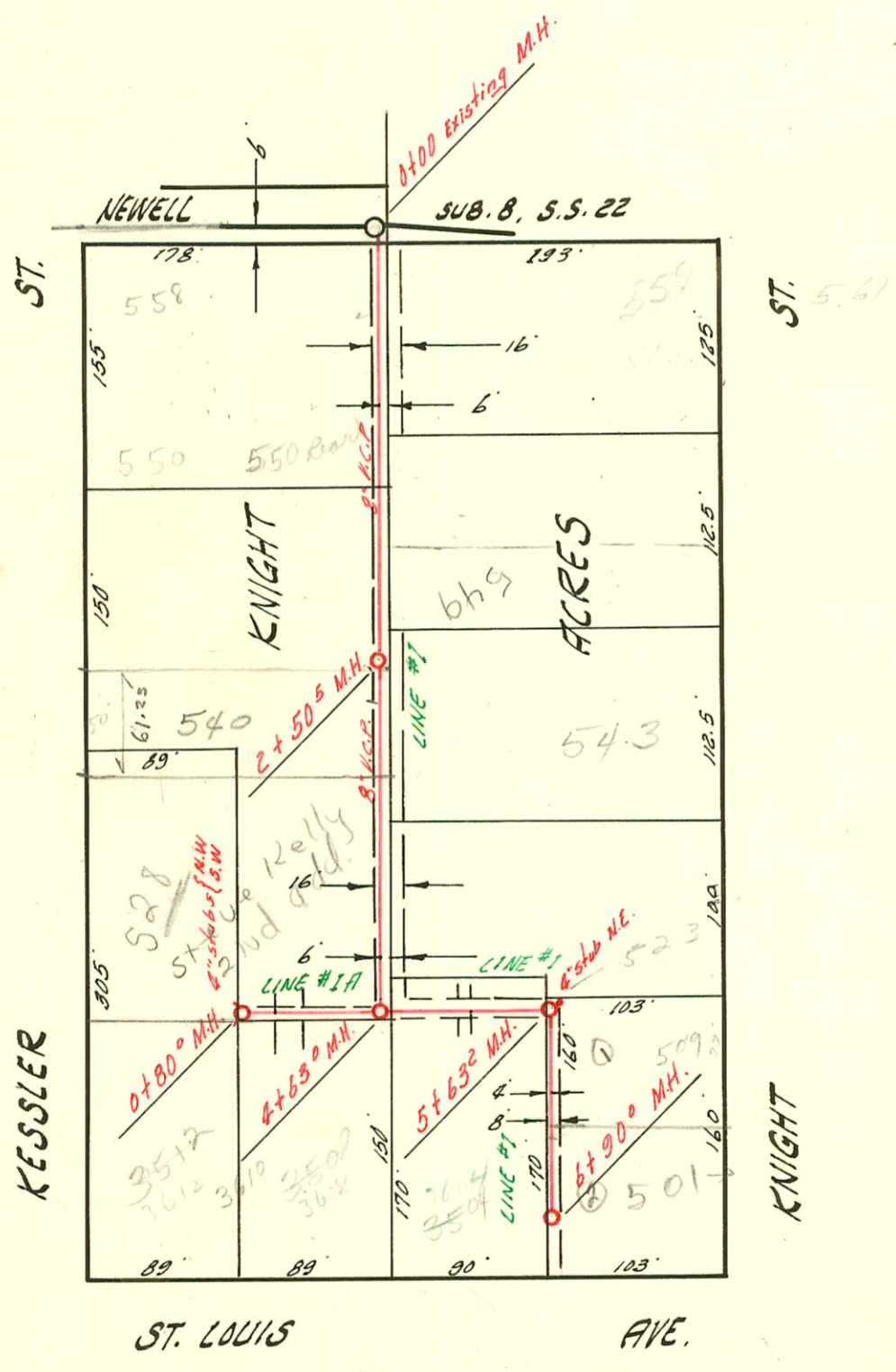


LATERAL 55 D.C.S. # 2 S.S. 22
 UTILITY CONTRACTORS INC. JULY 9'58
 BK NO. K-50 PROJ. NO. C27-71



SWR2001-03178 12/17/61 550 N Kessler #1 - Wichita Exc
 CITY TAP - 4" Precast - 1045, 2422, 2445, 1701W CO, 4" SCH 40
 149' S of MH 0100 (449)

LATERAL 3 SUB. B S.S. 22
 UTILITY CONTRACTORS INC. 10 JULY '58
 BK. NO. K-52 PROJ. NO. C27-26

CONSTRUCTION RECORD

SERVICE RECORD

STATION	ELEVATION		Depth	MANHOLE	4-INCH "Y" BRANCHES		No. of Permit		House Number		DATE OF PERMITS	
	Ground	Grade			North West	South East	North West	South East	North West	South East	North West	South East
LINE # 1												
0+00	215.0	207.02	8.0	Existing M.H.								
1+00	215.9	207.22	8.7									
	216.4	207.28 out 9.1 207.39 in 9.0		1+28 ⁵								
2+00	216.2	207.52	8.7		+67 ⁹		13106		5717 (E) E. 17 th		7-21-60	
3+00	217.0	207.72	9.3		+40 ⁰							
4+00	216.8	207.92	8.9		+09 ⁹ +80 ⁰							
5+00	217.5	208.04	9.5	4+62 ⁰	+54 ⁸							
	217.6	208.12	9.5		+20 ⁰ +96 ³		#15258		5905 E. 17 th		3-8-62	
6+00	218.5	208.32	10.2		+61 ⁴							
7+00	219.2	208.52	10.7		+28 ⁰							
					+90 ⁰ LINE PLUGGED							
LINE # 1A												
0+00	216.2	207.37	8.8	Existing M.H.								
					+08 ⁰ +67 ⁰		#15257 93-30602-7 72063		5713 E. 5709 E. 17 R		3-8-62 12-9-63 12-15-59	
1+00	216.0	207.58	8.4		+33 ⁰		12062		5705 E 17		12-15-59	
2+00	216.7	207.78	8.9	1+97 ⁰	+03 ⁰ +70 ⁰		11117 11116		5701 E 17 R 5617 H 617 H		7-30-59 7-30-59	
3+00	217.0	207.98	9.0		+42 ⁰		10208		5613 E 17 H		4-30-59	
4+00	217.0	208.18	8.8		+116		7662		5609 E 17 H		8-11-58	
	217.3	208.31 out 9.0 208.41 in 8.9	9.0 8.9	4+66 ⁰	8" stub N +82 ⁰		#90462 7661		5605 R E. 17 H		6-5-80 8-11-58	
5+00	217.5	208.38	9.1		+53 ⁰		7660		5601 E 17 H		8-11-58	
6+00					+05 ⁰ LINE PLUGGED							
LAT. 3 SUB. 8 S.S. 22					Y WEST	Y EAST						
LINE # 1	0+00	119.23	112.11	7.1	Existing M.H.							
					+55 ⁰	+45 ⁰		8352	539 N Knight		10-13-58	
1+00	119.4	112.31	7.1		+82 ⁰ wye +15 ⁰ (S)		15608 7486		561 N Knight		5-9-62	
					+95 ⁰	+33 ⁰ +97 ⁰		82336	537 N Knight		11-13-64	
2+00	119.4	112.51	6.9		+71 ⁵	2+32 ² top		13306	549 Knight		3-22-85	
	119.5	112.61	6.9	2+50 ⁵	+94 ⁰		7942		540 N Knight		9-26-51	
3+00	119.3	112.71	6.6		+40 ⁰	+71 ⁰		8384	543 N Knight		10-17-58	
4+00	119.3	112.91	6.4		+78 ⁰							
	119.6	113.03 out 6.6 113.12 in 6.5	6.6 6.5	4+63 ⁰								
5+00	120.0	113.21	6.8		+74 ⁰	4" stub N.E.	10761		523 N Knight		6-30-59	
	119.7	113.33 out 6.4 113.42 in 6.3	6.4 6.3	5+63 ²	+37 ⁰		979537 7667		501 Knight 501 N Knight		6-18-97 6-10-97 8-12-58	
6+00	119.9	113.51	6.4		6+90 ⁰		7868		3684 W. Knight		9-2-58	
LINE # 1A												
0+00	119.7	113.14	6.6	Existing M.H.	Y NORTH +43 ⁰ +49 ⁰	Y SOUTH						
	119.4	113.29	6.1	0+80 ⁰	4" stubs N.W. & S.W.				3608 5670 W. 5670 S. 5612 W. 5612 E. 5612 S.		7-2-81 4-26-68 10-16-58	

#17459 Lat 6 on Burn 558 N. Overwood All bearing 7-28-58 (15 trailers) #16873-5915 E. 17th - Reynolds City 4-1-63 Top (7+14)
 2001-03200 7465 Top 5607 KESSLER 510
 11370 Top 5097 Knight 9-1-59 Headguth 6+10.2
 #14149 Top 5811 E. 17th - 5-2-61 - Phillips "bearing" 6+44.0
 #14598 Top 5805 E. 17th Richard L. Zoy Jr. 8-24-61 (3+56)
 #14793 Top 5809 E. 17th - 10-9-61 (4+37)
 #14979 Top 544 N. 7th - 10-4-61 (2+25.5)
 #15277 Top 5219 E. 17th - 3-9-62 (6+60)
 #15276 Top 5813 E. 17th - 3-9-62 (4+54.0)