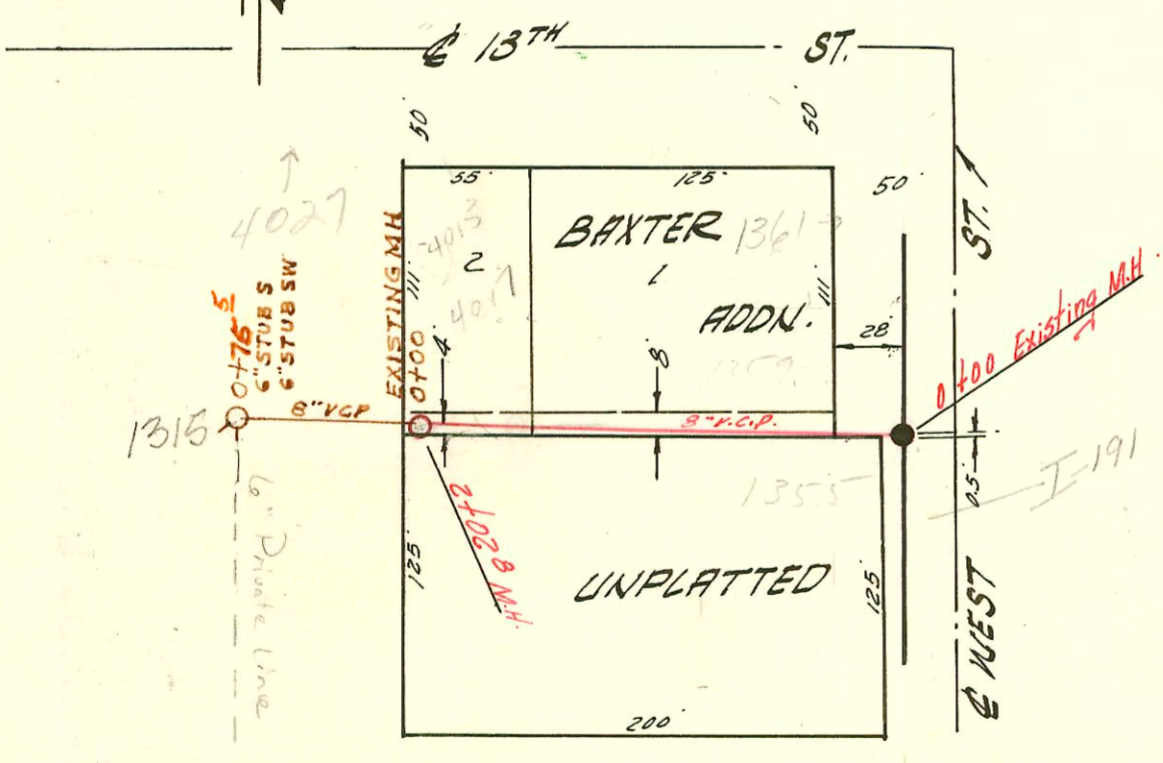


City assumed control of Christ the King Line in Aug. 2003 20' until ESM by separate inst. of SANITARY SEWER FOR CHRIST THE KING CHURCH PRIVATE CONTRACT AUG. 1 1958



SANITARY SEWER FOR BAXTER ADDN. PRIVATE CONTRACT, AUG. 1, 1958

1" = 80'

SANITARY SEWER EXTENSION FOR KARDATZKE ADD PRIVATE CONTRACT PROJ. N^o DBKW 704060 BOOKED 10-31-74 FROM PLOT PLAN #G-4

CONSTRUCTION RECORD						SERVICE RECORD						
STATION	ELEVATION		Depth	MANHOLE	4-INCH "Y" BRANCHES		No. of Permit		House Number		DATE OF PERMITS	
	Ground	Grade			North West	South East	North West	South East	North West	South East	North West	South East
0+00	117.8	108.00	9.8	0+00								
1+00	117.3	108.20	9.1			+10						
2+00	116.6	108.40	8.2	2+00								
3+00	116.5	108.60	7.9									
4+00	115.6	108.79	6.8	3+96								
5+00	116.4	108.95	7.4									
6+00	116.4	109.10	7.5									
6+00	116.7	109.40	7.3									
6+00	116.9	109.49	7.4	6+46	6" Stub N.		#7247		4501 W. Maple		10-26-67	
7+00	117.0	109.60	7.4									
8+00	117.3	109.80	7.5									
9+00	117.7	110.00	7.7									
9+00	117.7	110.06	7.6	9+32	6" Stub N.		#7249		4501 W. Maple		10-26-67	
10+00	118.3	110.20	8.1				#5479		4501 W. Maple		10-26-67	
10+00	117.8	110.24	7.6	10+21.76	6" Stub N. m.H. Tap		#7250		4501 W. Maple		10-26-67	
							C59521		4501 W. Maple		1-19-97	
S. S. FOR BAXTER ADDN.												
0+00	127.0	117.90	9.1	Existing M.H.	Y NORTH	Y SOUTH						
1+00	129.0	118.10	10.9			+51				1355 N. WEST		6-11-65 7-29-58 8-17-65
					+43.6		#7593		1359 N. WEST		7-29-58	
					+59.4		3695		1361 W. WEST		7-16-81	
						+61.4						
2+00	128.30	118.30	10.0									
	128.30	118.31	10.0	2+02.8								
SS EXTENSION FOR KARDATZKE ADDN												
0+00	128.0	118.31	9.7	0+00 EXISTING MH								
	126.4	118.55	7.9	0+75.56" STUB S	6" STUB SW		47233		1301 W. West - Bldg 5		10-31-74	
							47231		1301 W. West - Bldg 2		10-31-74	
							47787		1301 W. West - Bldg 3		12-16-74	
							0+12		1301 W. West - Bldg 1		10-31-74	
							0+46		1301 W. West - Bldg 3		10-31-74	

New Check
Private Line
Notes

2001-01114 (6" Private Line) R 5-16-01
 N/C 16717-1315 N. West St - 7-30-86 - James McCullough (Private 6" Line South of 0+75.5) (no manhole) on Private
 N/C 16718-1315 N. West St - 7-30-86 - James McCullough " " " " (40' W of M.H.)

* 06277-4411 W. Maple - 8/2/82 - Low Roofing (86.6' E of MH on 6" Line) (Private Line N)

72418 Tap 4001 W. Maple on under 6" stub (1+64)
 13210 Tap 4027 W. 13th Richard LaSoy Jr. (Tap MH 2+02.8)
 14463 Tap 4015-17 W. 13th at February 7-19-51 (1+91.8)