

RECONNECTIONS

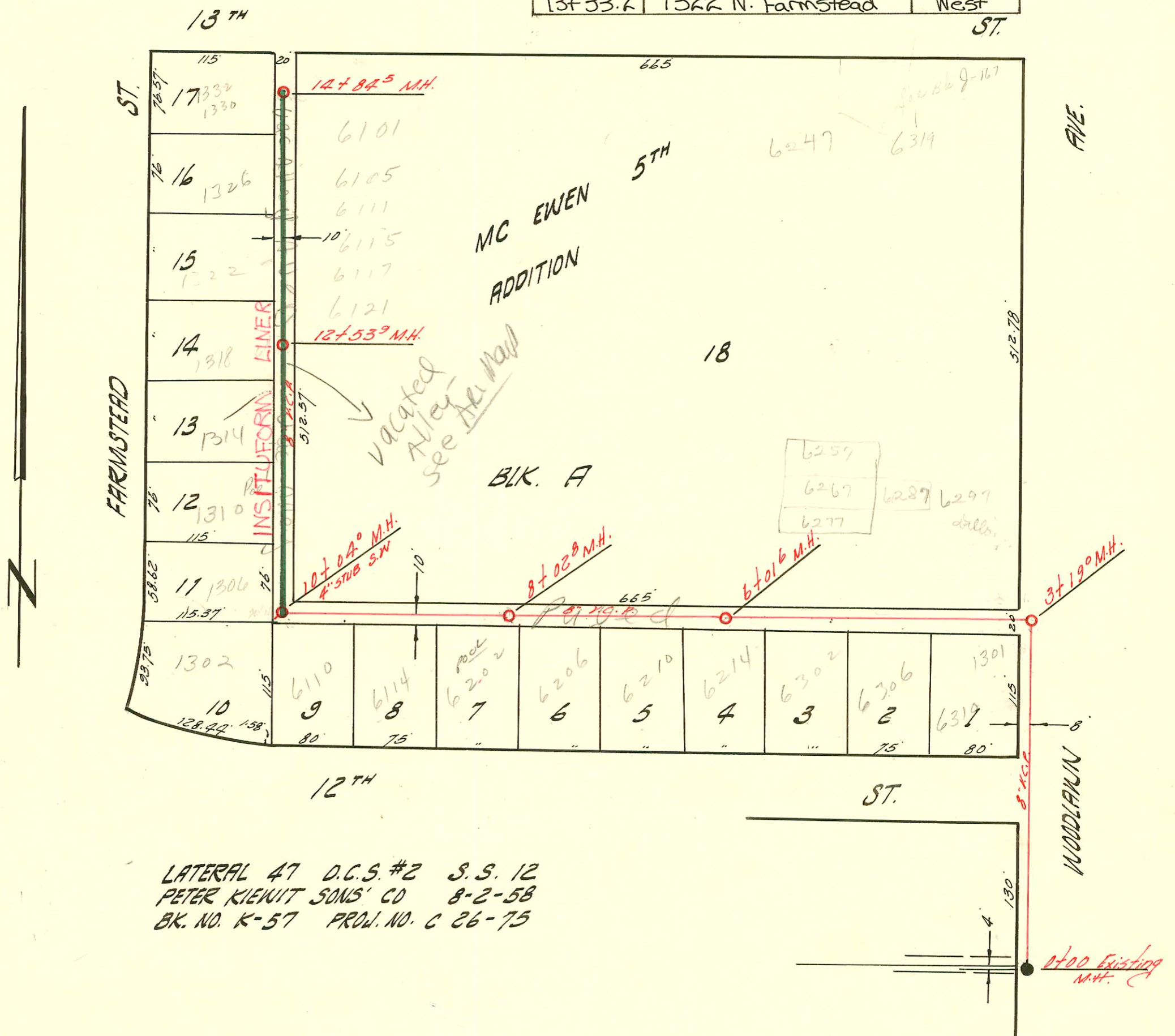
STATION	ADDRESS	DIRECTION
12+47.3	1318 N. Farmstead	West
11+73.4	1314 N. Farmstead	West
11+00.3	1310 N. Farmstead	West
10+75.8	1306 N. Farmstead	West

RECONNECTIONS

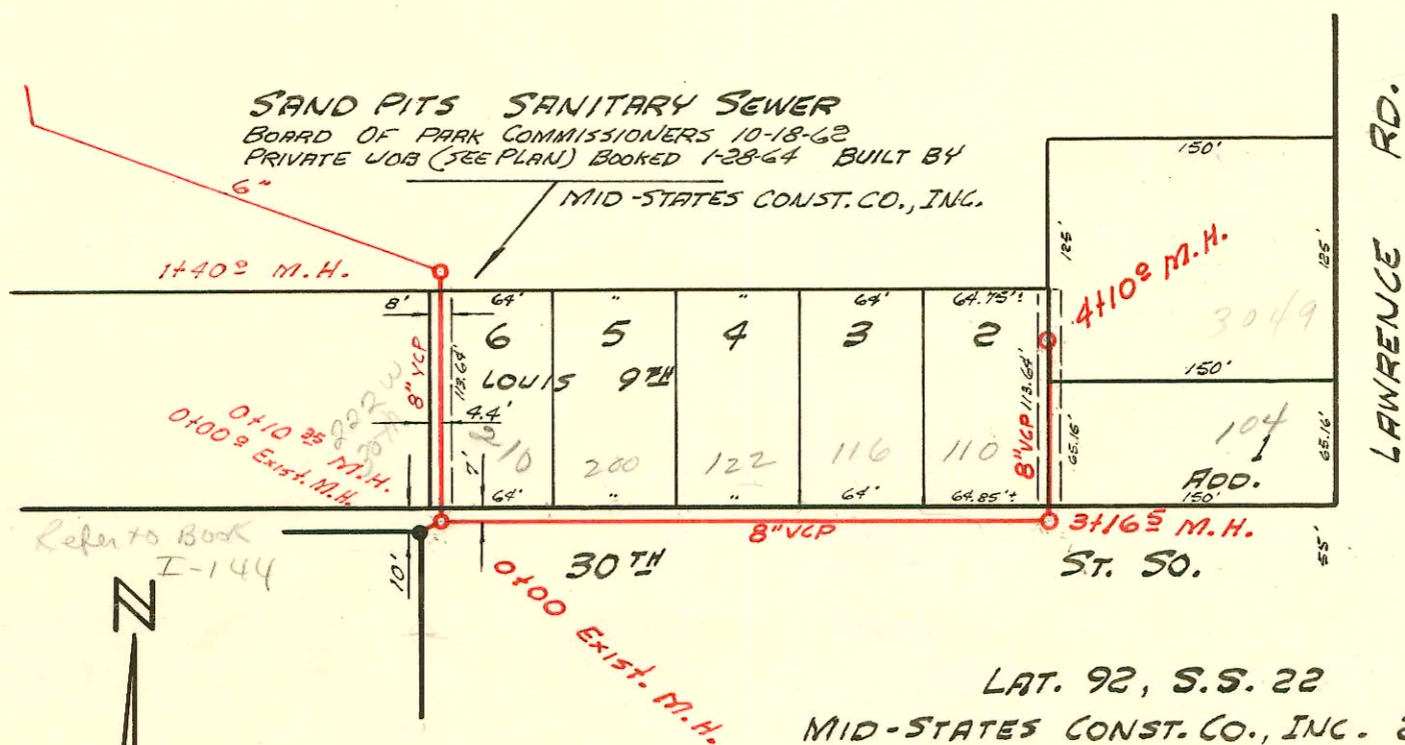
STATION	ADDRESS	DIRECTION
14+82.5	1332 N. Farmstead	West
14+79.5	6105 E. 13th St. North	East
14+71.5	1332 N. Farmstead	West
14+38.7	6109 E. 13th St. North	East
14+10.6	6111 E. 13th St. North	East
14+04.9	6115 E. 13th St. North	East
13+98.6	1326 N. Farmstead	West
13+92.6	6119 E. 13th St. North	East
13+49.2	6121 E. 13th St. North	East
13+33.2	1322 N. Farmstead	West

I-155A

SEWER RESPONSE PLAN - PHASE 1B  
 PROJ. NO. 468-82542 (621193)  
 BUILT BY INSITUFORM PLAINS, INC.  
 BOOKED 3-11-97 FROM AS BUILTS



LATERAL 47 D.C.S. #2 S.S. 12  
 PETER KIEWIT SONS' CO 8-2-58  
 BK. NO. K-57 PROJ. NO. C 26-75



LAT. 92, S.S. 22  
 MID-STATES CONST. CO., INC. 2-14-64  
 PROJ. NO. C23-125 K-75 BOOKED 2-24-64

- B-1791 - top-6101 E. 13th - Daniel William - 8-17-64 (14+76.5)
- B-1792 - top-6105 E. 13th - Daniel William - 8-17-64 (14+34.5)
- B-1793 - top-6111 E. 13th - Daniel William - 8-17-64 (14+05.5)
- B-1794 - top-6115 E. 13th - Daniel William - 8-17-64 (13+98.5)
- B-1795 - top-6119 E. 13th - Daniel William - 8-17-64 (13+82.5)
- B-1796 - top-6121 E. 13th - Daniel William - 8-17-64 (13+40.7)

Scale

1"=100'

### CONSTRUCTION RECORD

### SERVICE RECORD

STATION	ELEVATION		Depth	MANHOLE	4-INCH "Y" BRANCHES		No. of Permit		House Number		DATE OF PERMITS	
	Ground	Grade			North West	South East	North West	South East	North West	South East	North West	South East
0+00	199.8	195.00	4.8	Existing M.H.								
1+00	200.1	195.10	5.0									
2+00	199.0	195.20	3.8									
3+00	199.0	195.30	3.7									
	198.5	195.32 out 3.2 195.57 in 2.9		3+19°								
4+00	200.2	196.01	4.0		Top 4+09.9	+54°		651167		63068	9-4-75	
5+00	202.3	196.51	5.8			+296		19341		12th		2-12-59
					5+73.63 5+75.71	5+04° +76°		11431 11432	9623 8745	6297 6297 E. 12th	7-11-84 7-11-84	3-13-59 11-21-58
6+00	203.3	197.01	6.3	6+01°		+60°						
7+00	205.4	197.51	7.9			+266 +936			9093	6202 12th E		2-2-59
8+00	206.9	198.01	8.9	8+02°		+73°		8747		6114 E. 12th		11-21-58
9+00	208.6	198.51	10.1			+53°		9624		61102 12th		3-13-59
10+00	209.7	199.01 out 10.7 199.15 in 10.5		10+04°	4" stub S.W. Y.W.	+15° +88°		8463 7814		1307 1308 1310 1314 1318 1322 1326 1330-32 1322 1326 1330-32	10-29-58 8-20-58	
11+00	209.5	199.61	9.9			+116°		8260		1314B 1324 1314B 1324		10-13-58 8-18-84 2-9-59
12+00	209.3	200.11	9.2			+40°		7815		1318 1322 1326 1330-32		8-20-58
13+00	209.6	200.36	9.2	12+53°		+27° +95°		7869 8468		1322 1326 1330-32		9-2-58 10-30-58
14+00	209.6	201.11	8.5			+69°		13950		1330-32		3-10-61
	210.1	201.51	8.6	14+84°								
Private Park Dept. San. Sewer												
0+00	95.00	88.51	6.5	Exist. 0+00°								
	95.0	out 88.61 in 88.71	6.2 6.3	0+10°								
1+00	94.3	89.61	4.7									
	94.0	90.01	4.0	1+40°	6" Line N.W.			17921		2102W. 30th		4-24-68
					6+67.6	0+94°		C7989		222 W. 35th S		3-2-87
Lat. 92, S.S. 22												
0+00	95.36	88.71	6.7	Exist. 0+00°								
						0+17° 0+80°		C38394		200 W. 30th So		4-19-73
1+00	93.5	88.91	4.6									
						1+41°		C38393		122 W. 30th So		4-19-73
2+00	93.5	89.11	4.4			2+07° 2+69°		C38392		116 W. 30th So		4-19-73
3+00	93.2	89.31	3.9									
	93.4	out 89.36 in 89.46	4.0 3.9	3+16°		3+81°		C38391		110 W. 30th So		4-19-73
4+00	93.5	89.61	3.9									
	93.4	89.63	3.8	4+10°				C38389		104 W. 30th So		4-19-73
						4+02°		B929		3049 S. 12th		2-25-64

D. Hons  
3 tied  
together

Private

- # 8849 top 6121 E. 13th - 2-12-64 (8+78.8)
- # 8850 top 6121 E. 13th " " " (9+27.8)
- # 8851 top 6141 E. 13th " " " (7+95.8)
- # 8852 top 6201 E. 13th " " " (8+02.8)
- # 8746 - top 6210 E. 12th - 11-25-58 (6+66.1)
- # 9945 - top 6206 E. 12th - 4-3-59 (7+46.5)
- 13762 top 1301 Woodlawn Reynolds - 1-13-61 (2+08)
- # 13751 top 1330-32 - 3-10-61 (14+79.5)
- # 11310 top 6299 E. 13th - 5-15-63 (4+63.6)
- # 11123 top 6297 E. 13th - 5-15-63 (4+84.6)
- # 11129 top 6267 E. 13th - 5-15-63 (5+10.6)
- # 11130 top 6267 E. 13th - 5-15-63 (5+28.6)