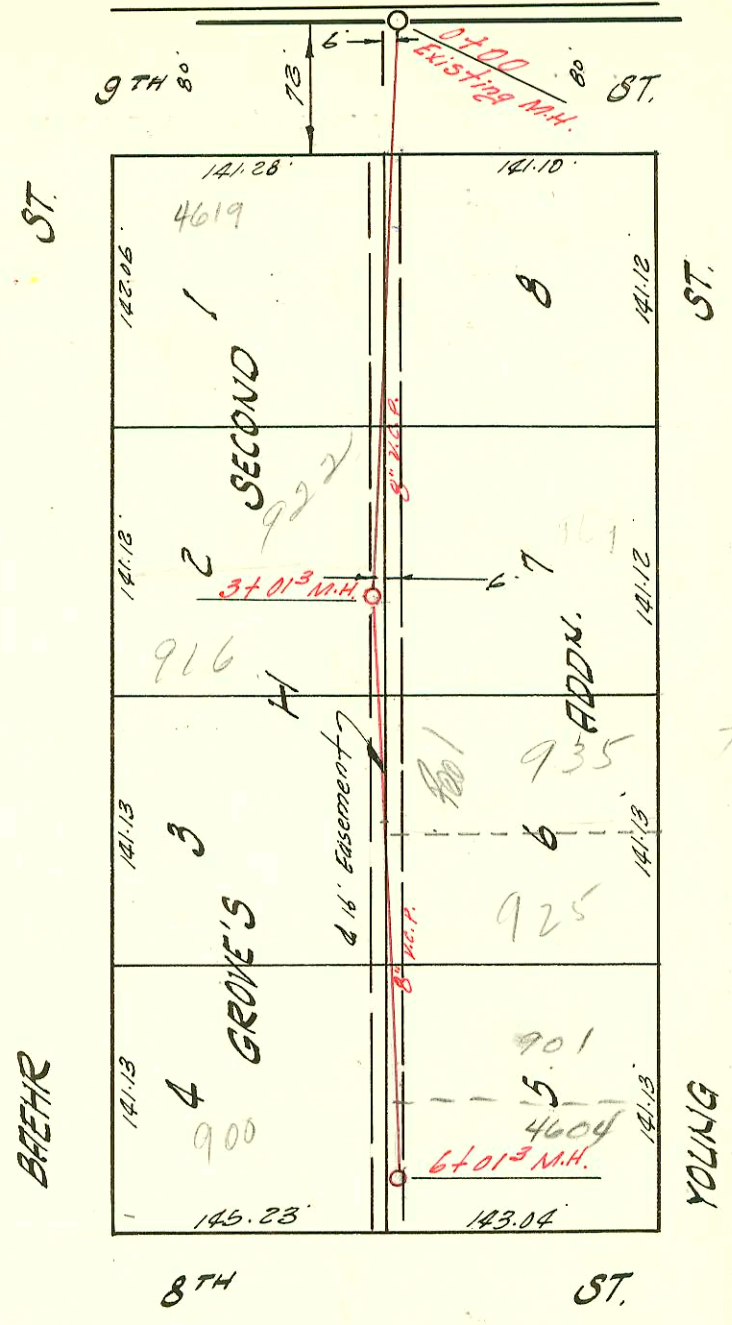
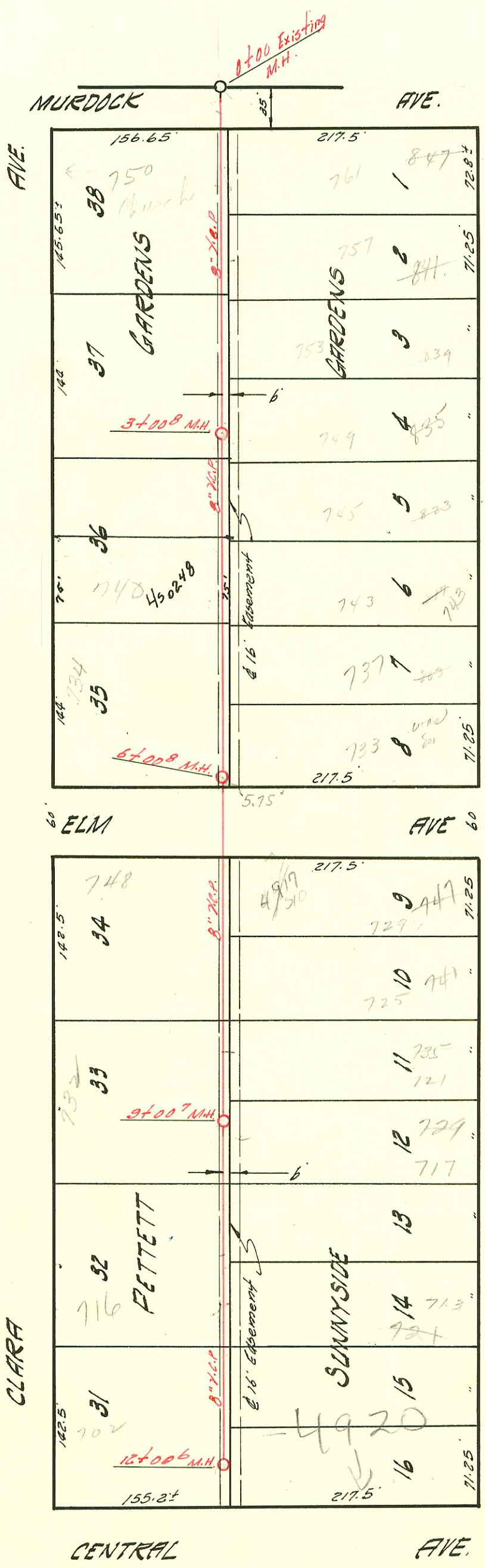


LATERAL 35 SUB. 5 S.S. 22  
 UTILITY CONTRACTORS INC. 9-2-58  
 BK. NO. K-49 PROJ. NO. C27-112



LATERAL 13 SUB. 5 S.S. 22  
 UTILITY CONTRACTORS INC 9-2-58  
 BK. NO. K-53 PROJ. NO. C 27-5

### CONSTRUCTION RECORD

### SERVICE RECORD

STATION	ELEVATION		Depth	MANHOLE	4-INCH "Y" BRANCHES		No. of Permit		House Number		DATE OF PERMITS	
	Ground	Grade			North West	South East	North West	South East	North West	South East	North West	South East
0+00	125.12	117.45	7.6	Existing M.H.								
1+00	127.8	117.85	9.9		+08°	+06°	64459	#14758	4619 W. 92th	985 N. Young	11-16-71	10-2-61
2+00	129.1	118.25	10.8		+68°	+66°						11-30-66
3+00	127.8	118.65	9.1	3+01 <sup>3</sup>		2+97 <sup>3</sup>						4-21-59
4+00	127.2	119.05	8.1		+13 <sup>3</sup>	+15 <sup>3</sup>	15889	#6984	708 N. Backe	935 N. Young	7-13-62	2-21-68
5+00	126.8	119.45	7.3		+58°	+56°	13794	C58884	900 N. Backe	460 W. 8th	7-16-88	7-23-68
6+00	126.0	119.85	6.1	6+01 <sup>3</sup>								11-15-76
LAT. 13 SUB. 5 S.S. 22												
0+00	122.6	114.00	8.6	Existing M.H.	+150°		13342		350 N. Clara		9-20-60	
1+00	122.8	114.20	8.6			+180°		8451				10-28-58
2+00	123.5	114.40	9.1			+151°		10035				4-10-59
3+00	123.8	114.60	9.2	3+00 <sup>8</sup>	+154°	+134°		10414		239 N. Bebe		5-27-59
4+00	123.7	114.80	8.9			+174°		9999		835 N. Bebe		4-13-59
5+00	123.4	115.00	8.4		+83°	+81°		10520		115 N. Bebe		5-28-59
6+00	123.4	115.20	8.2	6+00 <sup>8</sup>	Tap 4+14	+285°	C52609	13527	740 N. Clara	743 N. Bebe	11-20-75	11-2-60
7+00	123.4	115.40	8.0		+29°	+04°		15280		737 N. Bebe		3-9-62
8+00	122.9	115.60	7.3			+556°		13378		737 N. Bebe	10-12-60	
9+00	123.1	115.80	7.3	9+00 <sup>7</sup>		+74°		10141		737 N. Bebe		4-21-59
10+00	123.6	116.00	7.6		+234°	+30°	9928		730 N. Clara		4-2-59	5-18-72
11+00	124.0	116.20	7.8			+32°		8508		4917 N. Bebe		12-9-58
12+00	123.8	116.40	7.4	12+00 <sup>6</sup>		+74°		10207		241 N. Bebe		10-28-58
					+64°	8+40°	10310	11633	735 N. Clara	735 N. Bebe	5-5-59	10-14-59
					+09°			11155				8-6-59
					+84°							
					+18°		11868	6351	716 N. Clara	713 N. Bebe	3-3-87	10-13-58
					+60°			9089				1-30-59
					+212°		97-9177	13878	702 N. Clara	4920 W. Central	12-1-87	2-20-61
					+60 <sup>3</sup>		19781	9673			3-24-59	

10050 Tap 922 N Backe at Kenning 4-22 59 3+65.3  
 #12169-Sept M.H. #3+01.3-916 N Backe - Coleman Hwy - 1-22-60  
 C35223 - 901 N. Young - Keith Millard - 10-5-72 - TAP (5+273)