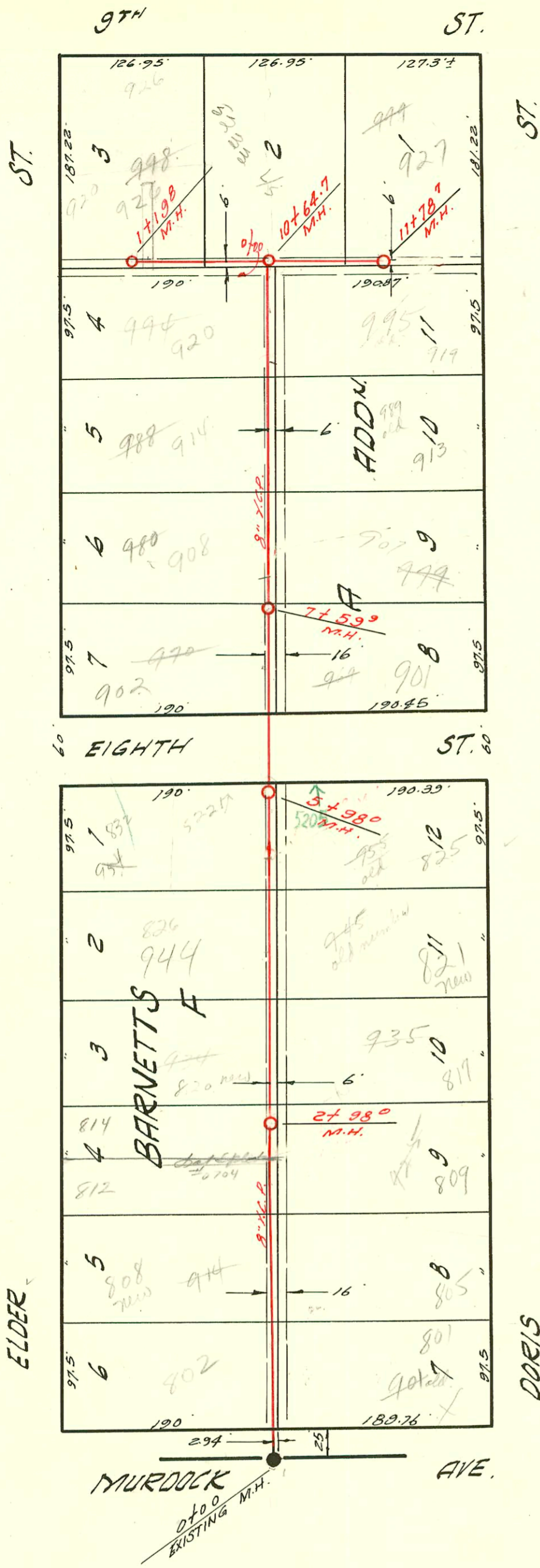
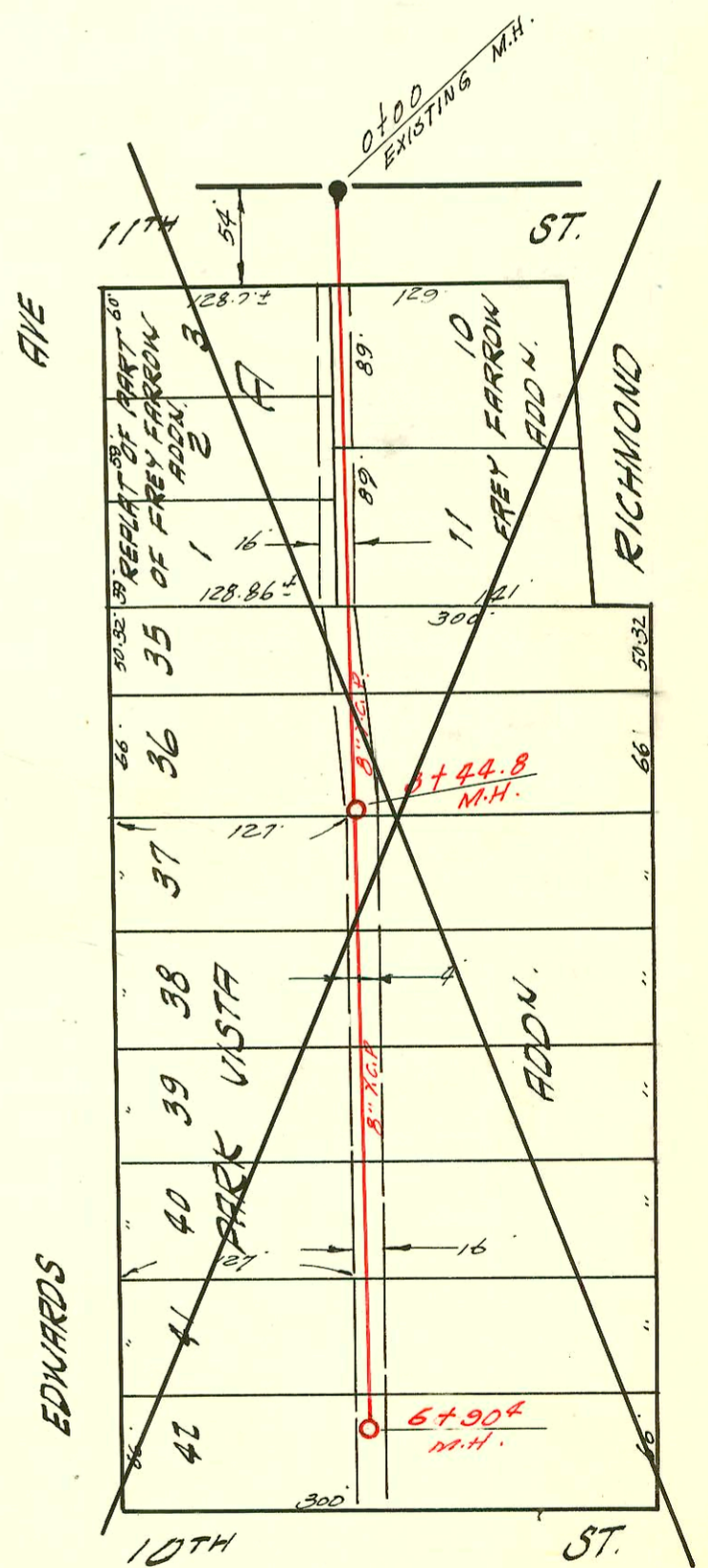


1-188



LATERAL 63 SUB 5 S.S. 22
 W. B. CARTER CONSTR. CO 10-27-58
 BK. NO. K-51A PROJ. NO. C 28-65



SEE PAGE 172

~~LATERAL 6 SUB 12 S.S. 22
 W. B. CARTER CONSTR. CO. 10-27-1958
 BK. NO. K-51A PROJ. NO. C 27-56~~

CONSTRUCTION RECORD

SERVICE RECORD

STATION	ELEVATION		Depth	MANHOLE	4-INCH "Y" BRANCHES		No. of Permit		House Number		DATE OF PERMITS	
	Ground	Grade			North West	South East	North West	South East	North West	South East	North West	South East
LAT. 63	SUB. 5		S.S.	22								
0+00	124.1	115.46	8.6	Existing M.H.	+358	+338	10445	9620	804 Elder	801 N. Davis	1-26-55	3-12-59
1+00	124.0	115.76	8.2		+365	+345	15948	9929	808 Elder	805 N. Davis	7-25-62	4-2-59
2+00	123.7	116.06	7.6		+296	+276	18371	8515	812 N. Elder	807 N. Davis	5-19-67	10-28-58
3+00	124.7	116.36	8.3	2+98°	+318	+266	18372	15215	814 N. Elder	811 N. Davis	5-19-67	10-31-58
4+00	124.7	116.66	8.0		+51°	+49°	10575	12883	821 N. Elder	821 N. Davis	6-8-59	6-10-60
5+00	124.5	116.96	1.5		+397	+249	9473	15550	832 N. Elder	825 N. Davis	10-18-63	4-27-62
6+00	124.3	117.26	7.0	5+98°	+56	+56	10450	051428	837 N. Elder	825 W. Davis	6-2-59	9-19-75
7+00	124.6	117.56	7.0		+08°	+06°	13411		901 N. Elder	901 N. Davis		4-26-60
8+00	125.0	117.86	7.1	7+599	+85°	+83°	9497	10209	980 N. Elder	979 N. Davis	3-11-59	4-30-59
9+00	125.2	118.16	7.0		+82°	+80°	9498		988 N. Elder		3-11-59	
10+00	124.8	118.46	6.3		+794	+774		11448		999 N. Davis		9-22-59
11+00	124.6	118.78	5.8	10+647	+523 (N.N.)		15187				2-14-60	
0+00	124.3	118.74	5.5	Existing M.H.	+07° (N.N.)		1474				9-17-85	
1+00	124.9	119.06	5.8		+103 (N.N.)		3027				4-7-81	
2+00	125.0	119.12	5.9	1+198			1541				3-3-59	
LAT. 6	SUB. 12		S.S.	22								
0+00	117.0	109.60	7.4	Existing M.H.	+794	+774						
1+00	115.3	109.80	5.5		+343	+341						
2+00	115.00	110.00	5.0		+876	+647						
3+00	115.9	110.20	5.7		+515	+495						
4+00	115.5	110.40	5.1		+055	+035						
5+00	116.3	110.60	5.7		+74°	+72°						
6+00	116.7	110.80	5.9		+388	+368						
					+038	+018						
					+66°	+64°						
					+26°	+24°						
					+776	+756						
	120.6	110.98	9.6	6+904								

SEE PAGE 172

3450 - 920 N. Elder 6581 In case Brand 18.3 E of 1149.8

#11622 - top 994 N. Elder L. Donoghue 10-13-59 H.01.3
 #16171 - top 913 N. Davis - C. J. O'Leary 10-24-62 (8+90.9)
 #B5055 - deal off 919 N. Davis - Morris L. Sore 2-8-66 - (pin line com. + 919 N. Davis)