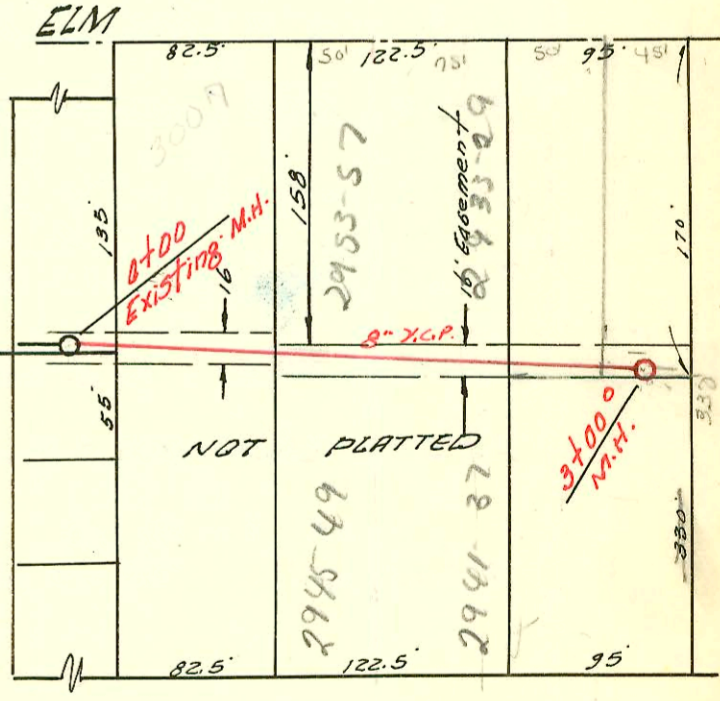
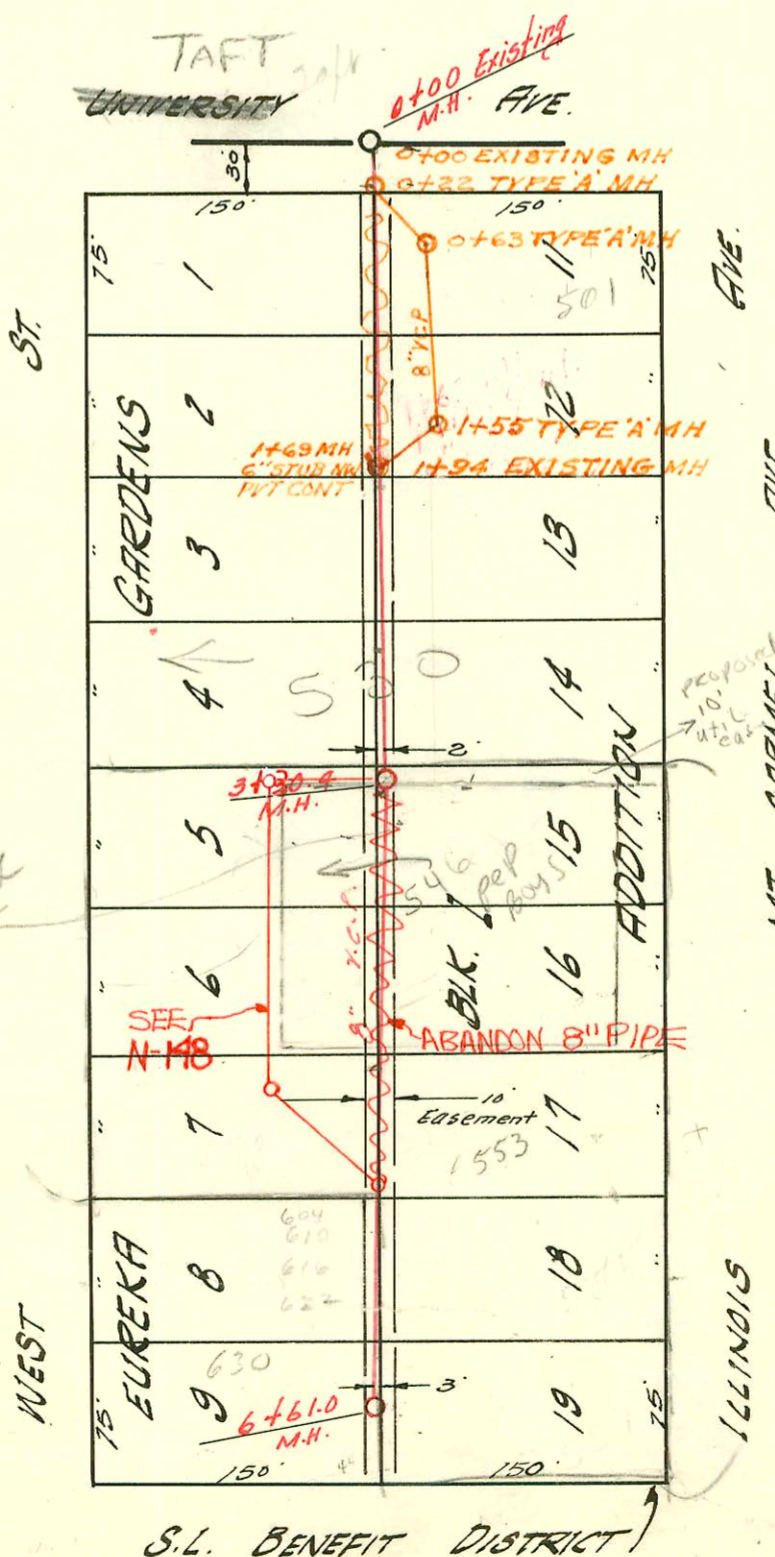


LATERAL 22 SUB. 9 S.S. 22
 UTILITY CONTR., INC. 11-6-1958
 BK. NO. K-56 PROJ. NO. C 28-66

Hot split
 SUB 200363

See CITY ENG
 Reports of
 CITY Sewer

LATERAL 50 SUB. 5 S.S. 22
 W.B. CARTER CONTR. 11-12-58
 BK. NO. K-68 PROJ. NO. C 28-41
 THE FOURTH WEST TOWNE BANK
 BUILT BY: MID STATES CONST. CO.
 PROJ. NO. DBKW 705013
 BOOKED 6-26-75 FROM PLAN



LAT. 36 DIST. A S.S. #21
 UTILITY CONTR. INC. 11-12-58
 BK. NO. K-48 C 28-60

S.L. BENEFIT DISTRICT
 561

CONSTRUCTION RECORD

SERVICE RECORD

STATION	ELEVATION		Depth	MANHOLE	4-INCH "Y" BRANCHES		No. of Permit		House Number		DATE OF PERMITS	
	Ground	Grade			North West	South East	North West	South East	North West	South East	North West	South East
0+00	119.3	112.66	6.6	Existing M.H.	0+198							
					0+83°		97-6447					4-25-97
1+00	119.6	112.96	6.6		1+28°		10062		808 N. 7th Canal	803 N. 7th Canal	1-17-73	4-16-59
					1+30°		96-8547		912 N. 7th Canal	805 N. 7th Canal	11-22-66	2-24-61
					1+92°		10696		818 N. 7th Canal	805 N. 7th Canal	2-21-63	3-21-65
2+00	120.4	113.26	7.1		2+29°		13271		824 N. 7th Canal	807 N. 7th Canal	9-26-67	4-27-94
					2+31°		99-8016		830 N. 7th Canal	813 N. 7th Canal	8-25-76	4-27-94
					2+92°		55008		830 N. 7th Canal	813 N. 7th Canal	8-25-76	4-27-94
3+00	120.4	113.47	6.9	2+70°	3+76°		57392		902 N. 7th Canal	815 N. 7th Canal	11-23-76	12-11-58
					3+76°		58790		815 N. 7th Canal			5-19-60
4+00	121.4	113.86	7.5		4+49°		459.5		910 N. 7th Canal	905 N. 7th Canal	9-21-76	10-12-65
					4+96°		3793		920 N. 7th Canal			5-7-70
5+00	121.8	114.16	7.6		5+09°		619171		936 N. 7th Canal			9-10-74
					5+30°							
					5+76°		046559					
6+00	121.7	114.46	7.2		6+04°		2004		962 N. 7th Canal	945 N. 7th Canal	1-24-04	11-18-58
					6+55°		235		962 N. 7th Canal	945 N. 7th Canal	8-3-61	2-15-59
7+00	120.5	114.76	5.7		7+20°		15267		970 N. 7th Canal	945 N. 7th Canal	3-8-62	11-19-62
					7+85°		14942		974 N. 7th Canal	945 N. 7th Canal	11-16-61	5-1-61
					7+90°		14139					
LAT. 50 SUB. 5 S.S. 22												
0+00	115.7	108.44	7.3	Existing M.H.	+71°		038931					5-10-73
					+92°		03096					2-13-65
1+00	115.2	108.84	6.4		+153°							11-17-75
					+36°		046200					0-52470
					+959°							4th National
2+00	115.2	109.24	6.0		+14°		071665					5-8-79
					+67°		3575					11-2-56
					+65°		02-08427					4-8-79
3+00	115.4	109.64	5.8		+49°		04-10778					27-11-94
					+49°		15881					7-11-62
					+63°		94-99417					6-27-94
					+23°		11313					2-20-59
4+00	115.7	110.04	5.7		+373°							
5+00	116.0	110.44	5.6		+06°		94-9903-7					6-27-94
					+04°		06254					6-27-94
					+67°		04-9938-701					11-23-70
					+65°		021900					3-23-59
6+00	116.1	110.84	5.3		+52°		016340					10-16-69
					+50°		14015					3-29-61
					+50°		11553					9-18-59
					+50°		17200					6-27-94
					+50°		94-9940-701					9-28-59
					+50°		11572					
LAT. 36 DIST. A S.S. 12												
0+00	120.1	115.78	4.3	Existing M.H. Y.N.	0+49°							11-20-58
					+62°		8673					
1+00	119.8	115.88	3.9		+99°							
2+00	119.7	115.98	3.7		2+15°							
					2+48°		1816027					8-27-48
					+50°		9661					3-20-59
					+50°		205-02830					12-28-65
					+50°		10770					7-1-59
THE FOURTH WEST TOWNE BANK												
0+00	115.0			0+00 EXISTING								
	115.2	107.69		0+22								
	115.2	107.86		0+63								
1+00	115.2	108.01		+75°								
	115.3	108.24		+55°								
	115.2	108.40		+94 EXISTING								

See 2006-0171 4/25/06 620 S West (620-630): Two new Plumbing Kickouts - Tie together outside Bldg & tie back to exist serv. line.

See # 01521 532 S West 10-16-50 Henry M.H. 3430 (86.3'S on 2+80.3°)
 C20272 500 S West St. - Chas Grimm 7-28-70 Tap (4+34.4)
 3010184 Tap 501 S Illinois Headgopath 4-29-59, 0+95 5-10-73 Al Hennig C38931 (0+95)