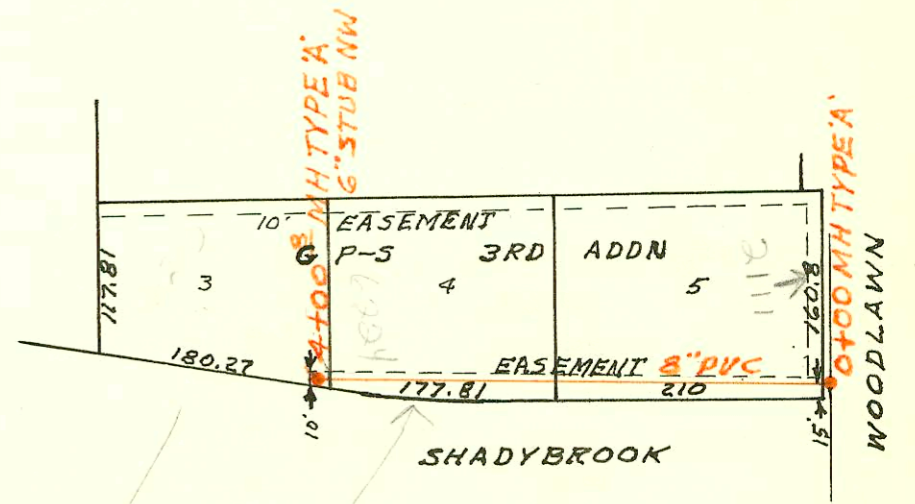
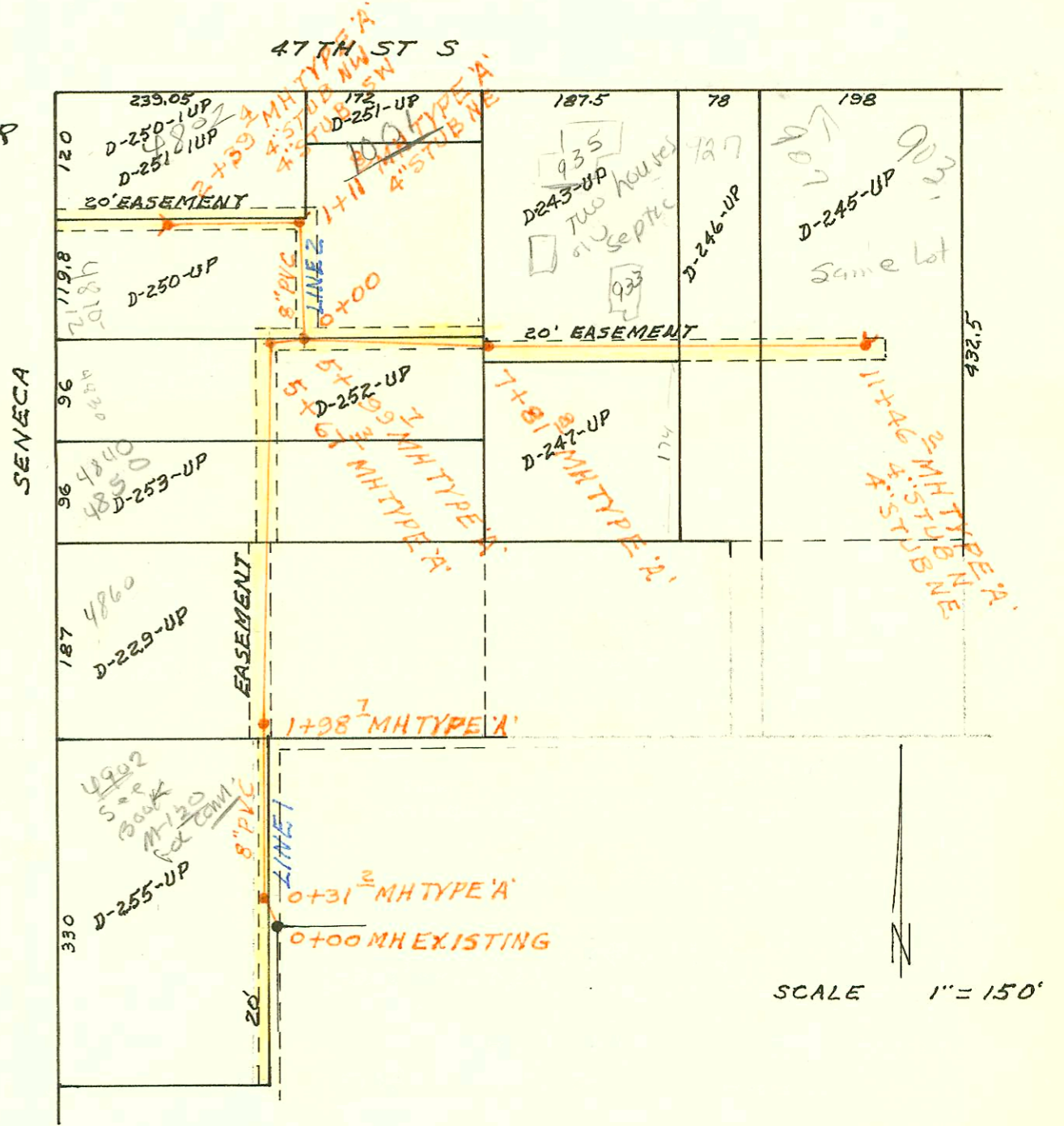


LATERAL 9 MAIN 3 SOUTHWEST INTERCEPTOR
BUILT BY: UTILITY CONTR. INC.
PROJ. N^o 468-76-245-80071-000-000-001
BOOKED 10-27-82 FROM DRH 15

on map
8-87



LATERAL 43 MAIN 5 SAN SEWER N^o 23
BUILT BY: UTILITY CONTR. INC.
PROJ. N^o 468-76-245-81149-000-000-001
BOOKED 11-1-82 FROM AG 14
SEE PAGE I210 FOR DATA

on map

11-39

Info on P-I210

CONSTRUCTION RECORD						SERVICE RECORD						
STATION	ELEVATION		Depth	MANHOLE	4-INCH "Y" BRANCHES		No. of Permit		House Number		DATE OF PERMITS	
	Ground	Grade			North West	South East	North West	South East	North West	South East	North West	South East
L A T LINE 1A	72	WIS (CONT'D)										
0+00	176.8	165.99	10.8	0+00=1+89.5 LINE ONE	0+38 tap		14030		2205 white cliff			6-20-85
1+00	177.9	168.30	9.6		0+98.76		8997	8771 Hillcrest			8-16-83	
	180.3	170.31	10.0	1+86.7	1+01.7 tap			8894	2207 white cliff			12-13-83
2+00	179.4	170.51	8.9		1+97.2 tap		10624	8703 Hillcrest			4-13-84	
	180.9	171.49	9.4	2+67	2+44.7 tap	2+03.2 tap	12236	11552	8615 white cliff	2215 white cliff		3-15-85
				4" STUB NW	4" STUB SE			13972	2217 white cliff			6-11-85
LINE 2	0+00	182.2	171.55	10.7	0+00 EXISTING	5+30.0 TAP		19670	8705 Parkmont			11-21-87
	1+00	181.7	172.60	9.1		0+94.0 TAP		19138	8713 Parkmont			9-24-87
	2+00	184.1	173.64	10.5		0+96.0 TAP		19157	8711 Parkmont			9-24-87
	3+00	186.5	174.69	11.8		2+47.8 TAP		19233	8617 Parkmont			10-05-87
		187.6	175.72	9.9	3+71.8	2+49.8 TAP		19232	8607 Parkmont			10-05-87
						3+07.8 tap		10800	8607 Parkmont			4-26-84
						3+52.3 tap		10799	8607 Parkmont			4-26-84
						3+99.8 tap		10801	8515 Parkmont			4-26-84
	4+00	188.5	177.85	10.7		4+19.3 tap		10802	8511 Parkmont			4-26-84
						4+98.8 tap		11439	8507 Parkmont			7-11-87
	5+00	188.7	178.31	10.4		5+96.8 tap		11401	8437 Parkmont			7-10-87
						5+98.8 tap		11402	8503 Parkmont			7-10-87
	6+00	188.0	178.76	9.2								
	7+00	189.4	179.22	10.2		7+28.8 tap		11794	8715 Parkmont			8-16-87
		189.3	179.52	9.8	7+65.8	7+20.8 tap		11793	8711 Parkmont			8-16-87
					4" STUB NW			10542	8405-7 Parkmont			3-30-84
LINE 3	0+00	186.1	172.43	13.7	0+00							
	1+00	183.6	173.88	9.7								
	2+00	185.3	175.33	10.0								
	3+00	188.2	176.77	11.4				16878	2327 Dalton			9-15-86
		189.6	177.62	12.0	3+58.5	3+27.0 tap		16881	2325 Dalton			9-15-86
						3+80.0 tap		17513	2335 Dalton			12-27-86
	4+00	190.2	177.81	12.4		4+25.5 tap		11403	17513 Dalton	2333 Dalton		7-10-87
						4+28.5 tap		11404	17514 Dalton	2330 Dalton		12-22-86
	5+00	191.7	178.27	13.4		5+07.3 tap		12456	2345 Dalton			6-8-87
						5+72.6 tap		12209	18460 Dalton	2347 Dalton		10-10-87
	6+00	193.7	178.73	15.0		6+74.8 tap		12208	19446 Dalton	2355 Dalton		10-10-87
		194.3	178.85	15.5	6+26.8	5+82.8 tap		19447	2357 Dalton			10-26-87
						5+83.8 tap						
	7+00	194.6	179.22	15.4		7+80.3 tap		11568	8420 Parkmont			7-24-87
						7+97.3 tap		11567	8423 Parkmont			7-24-87
	8+00	194.2	179.73	14.5								
		195.0	180.04	15.0	8+62.3	4" STUB NW		12210	8417-19 Parkmont			10-10-87
L A T LINE 1	9	MAIN 3 SWI										
0+00	84.8	75.92	8.9	0+00 EXISTING	4" STUB NW	4" STUB NE	4" STUB SE					
	84.7	76.13	8.6									
		76.20	8.5	0+31.2								
1+00	84.8	76.43	8.4									
	84.4	76.76	7.6	1+98.7								
2+00	84.6	76.77	7.8		4" SOL 35							
					2+86.7 tap			7326	4860 Seneca	county Seneca		9-28-83
3+00	86.1	77.20	8.9									
4+00	86.1	77.63	8.5		4" SOL 40							
					4+18			8683767	4850 Seneca	county Seneca		5-15-86
5+00	85.7	78.07	7.6									
	85.8	78.36	7.4	5+67.3								
		78.44	7.4									
	85.9	78.54	7.4	5+99.7								
6+00	85.7	78.54	7.2									
7+00	85.3	78.86	6.4									
	86.2	79.13	7.1	7+81.8								