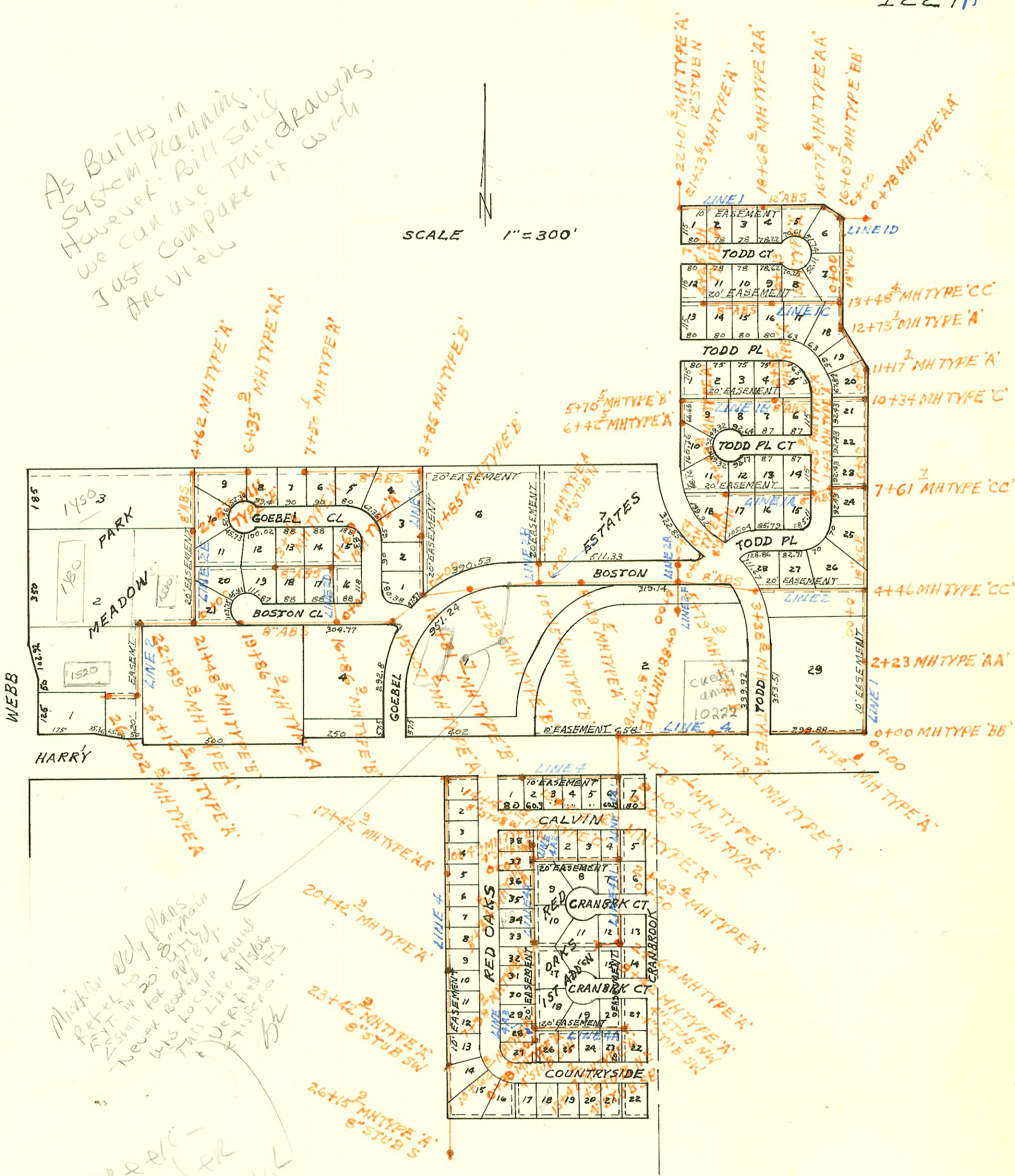


As Built's in
System Planning.
However, Bill said
we can use this drawings.
Just compare it with
Arc view

SCALE 1" = 300'



Marked by plans
Refer to 20' or main
25' SWM for apt. bldg.
Never located found
this location found
Verifying 4' slope
+ systems
bz

4 mile creek -
now under
City Control
4/1/01
BK

SANITARY SEWER FOR PARK MEADOW ESTATES
LATERAL SEWER DISTRICT
BUILT BY: (IN COUNTY)
PROJ. NO 30-76496-024 & NO 30-76496-4-024
BOOKED 7-27-83 FROM 'AS BUILT' PLANS
PHASE 1A & 2A

~~Do not Issue Permits for Sewer~~
~~see Sedg. County for Comm~~
~~Permits~~
call County
268-7951
DRB
8-4-83

4-mile creek

CONSTRUCTION RECORD							SERVICE RECORD					
STATION	ELEVATION		Depth	MANHOLE	4-INCH "Y" BRANCHES		No. of Permit		House Number		DATE OF PERMITS	
	Ground	Grade			North West	South East	North West	South East	North West	South East	North West	South East
SAN SEWER FOR PARK MEADOW EST LAT SEWER DIST. (CONT'D)												
LINE 2 CONT'D	26+00	160.75										
	167.7	160.76	6.9	26+02.8	8" STUB W							
LINE 2A	0+00	160.1	8.4	0+00=5+79.9	LINE 2							
	160.1	152.05	8.1	0+54	8" STUB N							
LINE 2B	0+00	161.6	8.2	0+00=10+15.1	LINE 2							
	161.6	153.76	7.8	0+54	8" STUB N							
LINE 2C	0+00	165.7	9.3	0+00=13+81.7	LINE 2							
	1+00	158.27										
	170.3	159.75	10.6	1+85								
		160.67										
	2+00	160.67										
	3+00	161.14										
	172.4	161.64	10.9	3+85								
		162.53										
	4+00	162.53										
	5+00	163.46										
	6+00	164.40										
	7+00	165.33										
	176.7	165.80	10.9	7+50.1								
LINE 2D	0+00	166.6	9.5	0+00=16+86.3	LINE 2							
	1+00	157.58										
	171.3	157.94	13.4	1+69								
		158.07	13.2									
	2+00	158.19										
	3+00	158.60										
	171.9	158.79	13.1	3+48								
LINE 2E	0+00	167.5	8.2	0+00=21+48.5	LINE 2							
	1+00	159.64										
	2+00	160.01										
	172.7	160.34	12.4	2+87								
		161.32	11.4									
	3+00	161.32										
	4+00	162.26										
	175.0	162.78	12.2	4+62								
		163.03	12.0									
	5+00	163.82										
	6+00	165.16										
	177.2	165.71	11.5	6+35.9								
LINE 2F	0+00	160.1	10.9	0+00=5+79.9	LINE 2							
	157.3	149.44	7.9	0+88	8" STUB S							
LINE 4	0+00	156.42	9.1	0+00=0+00	LINE 1							
	1+00	147.78										
	156.4	148.17	8.2	1+78.1								
		148.13	8.2									

