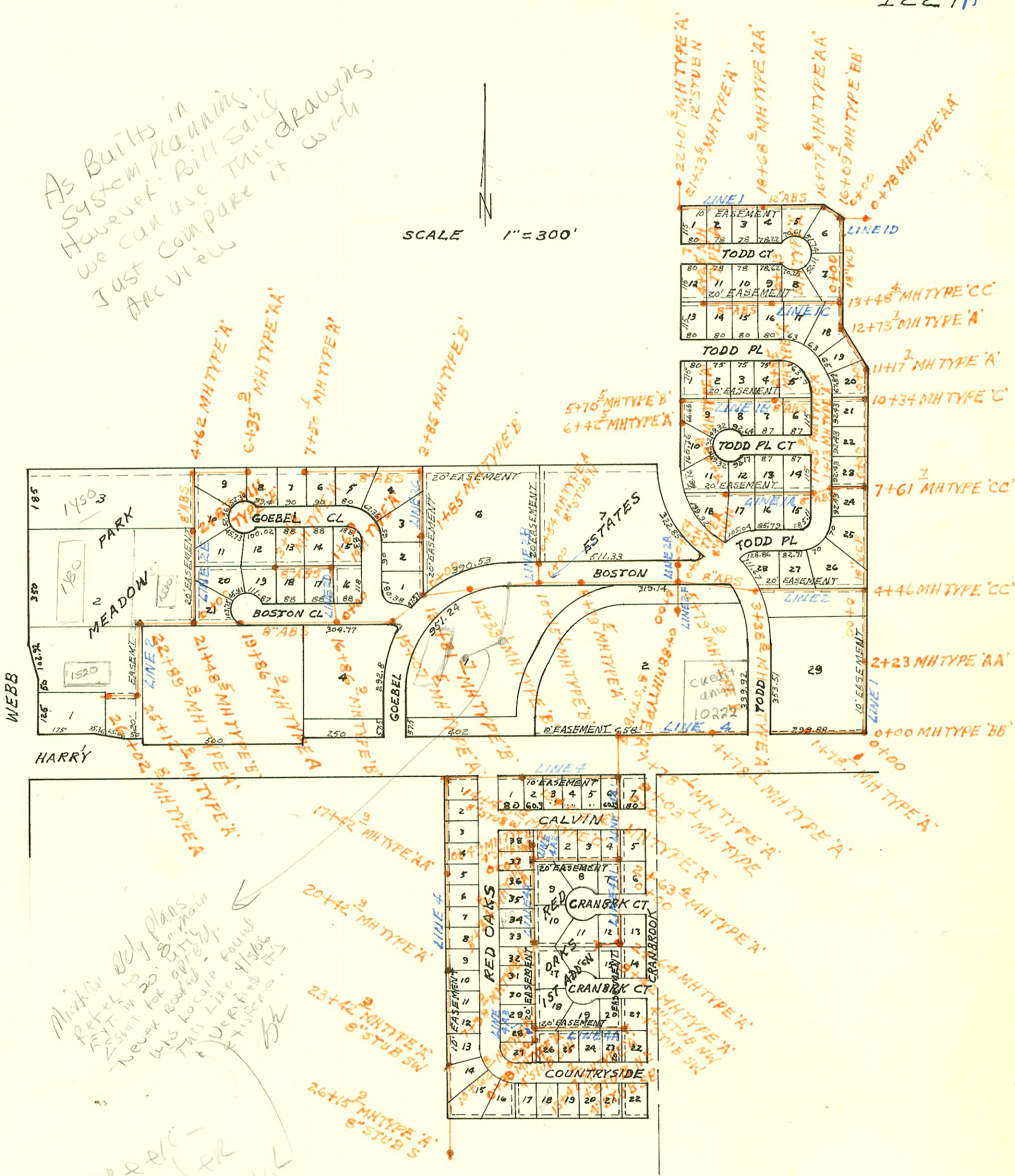


As Built in System Planning. However, Bill said we can use this drawing. Just compare it with Arc view

SCALE 1" = 300'



Marked by plans refer to 20' or main 25' width for apt. Never located. This location found by looking at 4/15/83 system. bk

4 mile creek - now under City Control 4/1/01 BK

SANITARY SEWER FOR PARK MEADOW ESTATES LATERAL SEWER DISTRICT BUILT BY: (IN COUNTY) PROJ. NO 30-76496-024 & NO 30-76496-4-024 BOOKED 7-27-83 FROM 'AS BUILT' PLANS PHASE 1A & 2A

~~Do not Issue Permits for sewer~~
~~see Sedy. County for Comm~~
~~Permits~~
call county 268-7951
DRB
8-4-83

4-mile creek

CONSTRUCTION RECORD						SERVICE RECORD						
STATION	ELEVATION		Depth	MANHOLE	4-INCH "Y" BRANCHES		No. of Permit		House Number		DATE OF PERMITS	
	Ground	Grade			North West	South East	North West	South East	North West	South East	North West	South East
SAN SEWER FOR PARK MEADOW EST LAT SEWER DIST. (CONT'D)												
2+00		148.28										
3+00		148.69										
4+00	160.5	149.09 149.41 149.47	11.1 11.0	4+78.1								
5+00		149.55										
6+00		149.90										
7+00	164.3	150.26 150.54 150.95	13.8 13.4	7+78.1								
8+00		151.10										
9+00	165.7	151.76 151.78 151.81	13.9 13.9	9+03.1								
10+00		151.97										
11+00		152.14										
12+00	162.2	152.30 152.31 152.29	9.9 9.9	12+04.5								
13+00		152.91										
14+00	166.4	153.57 153.83 157.84	12.6 8.6	14+40.6								
15+00		157.99										
16+00		158.25										
17+00	172.8	158.51 158.62 158.63	14.2 14.2	17+42.9								
18+00		159.04										
19+00		159.77										
20+00	172.2 172.2	160.49 160.80 160.81	11.4 11.4	20+42.9								
21+00		160.95										
22+00		161.21										
23+00	170.4	161.46 161.57 161.65	8.8 8.8	23+42.9		8" STUB SW						
24+00		161.89										
25+00		162.31										
26+00	169.9	162.72 162.79	7.1	26+15.9		8" STUB S						
0+00	165.7	155.48	10.2	0+00=9+03.1 LINE 4								
1+00		155.89										
2+00	168.8	156.30 156.56 156.68	12.2 12.7	2+63.4								
3+00		156.83										
4+00		157.24										

SAN
LINE 4
CONT'D

LINE 4A