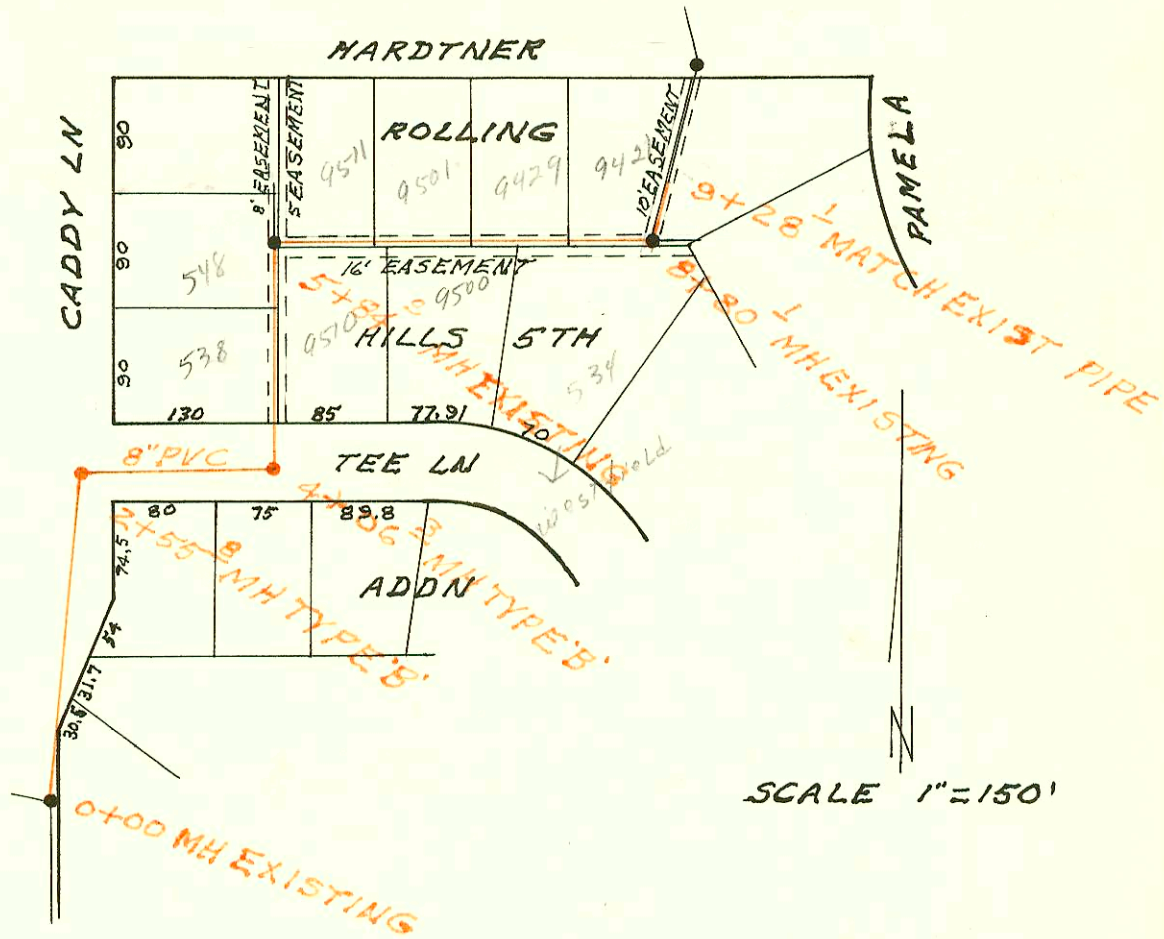


RECON OF PART OF WESTLINK IMPR DIST SEWER
BTW CADDY LN & PAMELA FROM TEE LN TO HARDTNER
BUILT BY: UTILITY CONTR. INC.
PROJ. NO 468-76-245-8/190-000-001
BOOKED 6-7-83 FROM DLK 390
SEE PAGE K72

on map
5-49



CONSTRUCTION RECORD							SERVICE RECORD						
STATION	ELEVATION		Depth	MANHOLE	4-INCH "Y" BRANCHES		No. of Permit		House Number		DATE OF PERMITS		
	Ground	Grade			North West	South East	North West	South East	North West	South East	North West	South East	
SAN SEWER FOR PARK MEADOW EST LAY SEWER DIST (CONT'D)													
LINE 4A CONT'D	5+00	157.65											
		168.4	157.79 157.89	10.6 10.5	5+34.8								
	6+00	158.14											
	7+00	158.53											
		170.3	158.92 158.96	11.4 11.3	7+98.8								
	8+00	158.96											
	9+00	159.34											
	10+00	159.72											
		172.3	159.96 160.21	12.3 12.1	10+62.8								
	11+00	160.63											
	12+00	161.76											
	13+00	162.89											
		174.0	163.42	10.6	13+47.2	4" STUB NE	4" STUB SE						
LINE 4A1	0+00	168.8	156.62	12.2	0+00=2+63.4 LINE 4A								
	1+00	158.17											
	2+00	159.73											
		170.4	160.72 160.93	9.7 9.5	2+64								
	3+00	161.17											
		169.0	161.46	7.5	3+42	4" STUB NW	4" STUB SW						
LINE 4A2	0+00	168.4	157.93	10.5	0+00=5+34.8 LINE 4A								
		167.2	158.34	8.9	0+49	4" STUB NW							
LINE 4A3	0+00	172.3	160.14	12.2	0+00=10+62.8 LINE 4A								
		173.1	160.88	12.2	0+39		4" STUB SW						
RECON OF PART OF WESTLINK IMPR DIST SEWER													
	0+00	142.2	129.03	13.2	0+60 EXISTING								
	1+00	141.5	129.40	12.1									
	2+00	141.3	129.77	11.5									
		141.4	129.98 130.17	11.4 11.2	2+55.8								
	3+00	141.5	130.22	11.3									
	4+00	141.7	130.32	11.4									
		141.7	130.33 130.36	11.4 11.3	4+06.3	4" STUB 4" W		8378	538 6" HDV LV		6-14-83		
	5+00	142.2	130.54	11.7									
		142.2	130.70 130.80	11.5 11.3	5+84.0	2" W-LAY		8379	548 6" HDV LV		6-14-83		
	6+00	142.2	130.94	11.3									
						6+23 4" N	6+25 4" S	8380	8381	950 4" BRN TRNK	950 2" C	6-14-83	6-14-83
	7+00	142.5	131.18	11.3									
						7+01 4" N		8382		9501 4" BRN TRNK		6-14-83	
						7+78 4" N	7+24 4" S	8383	8385	9429 4" BRN TRNK	9500 2" C	6-14-83	6-14-83
	8+00	142.3	131.42	10.9									
		142.5	131.61 131.62	10.9 10.9	8+80.1	8+50 4" N	8+20 4" S	8384	8386	9421 4" BRN TRNK	534 4" BRN TRNK	6-14-83	6-14-83
	9+00	142.5	131.67	10.8									
	+28.1	142.5	131.74	10.8	MATCH EXISTING PIPE								