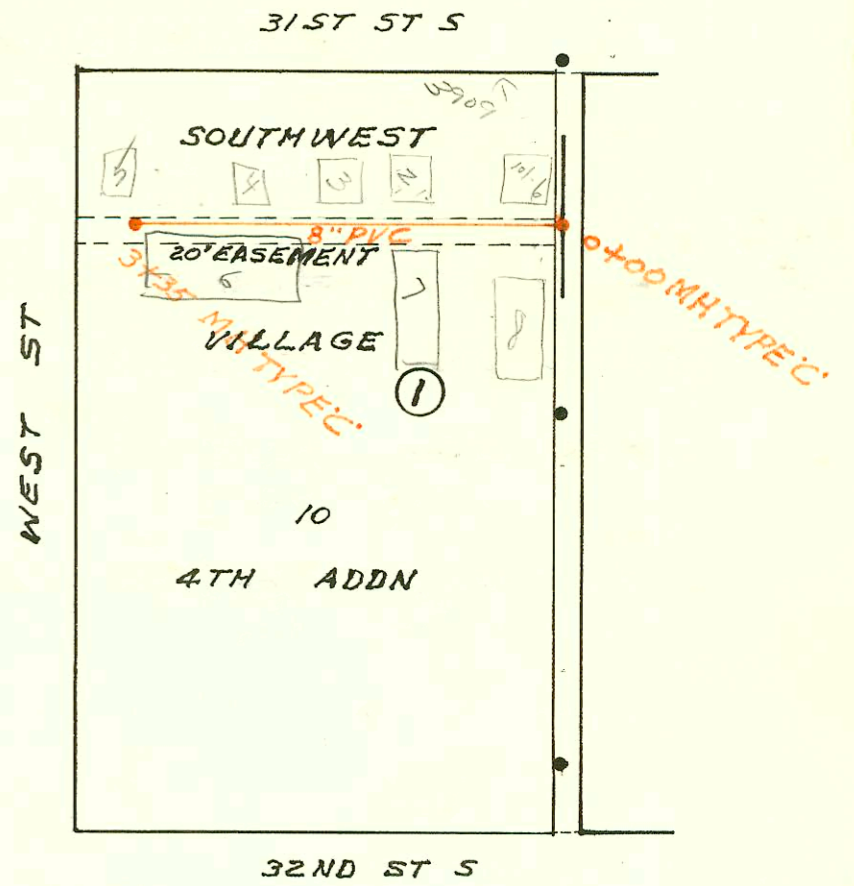
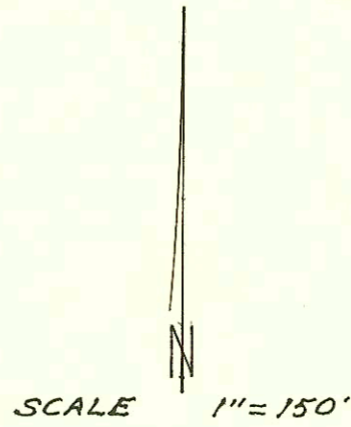


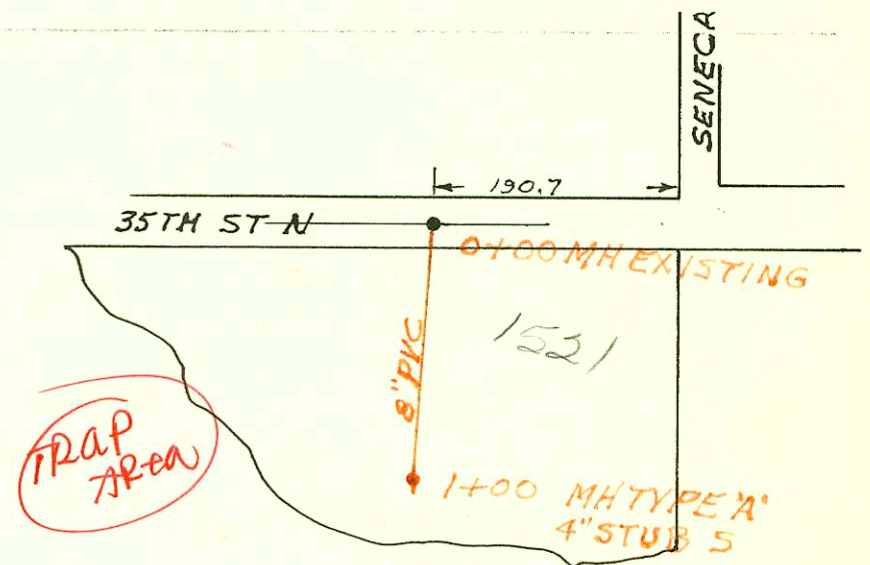
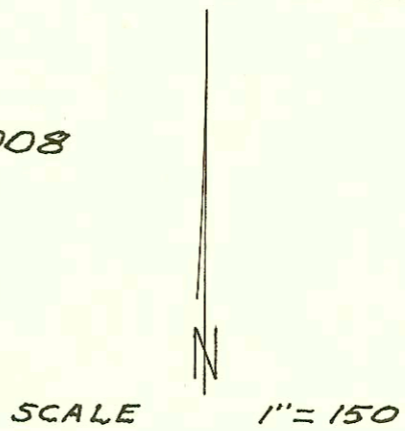
SAN SEWER FOR LAREDO VILLAGE
 LOT 10 BLK 1 SOUTHWEST VILLAGE 4TH ADDN
 BUILT BY: DULING CONST. CO.
 PROJ. N^o 468-76-245-80000-000-000-008
 BOOKED 6-10-83 FROM JPCS VIII

on map 2-74 86



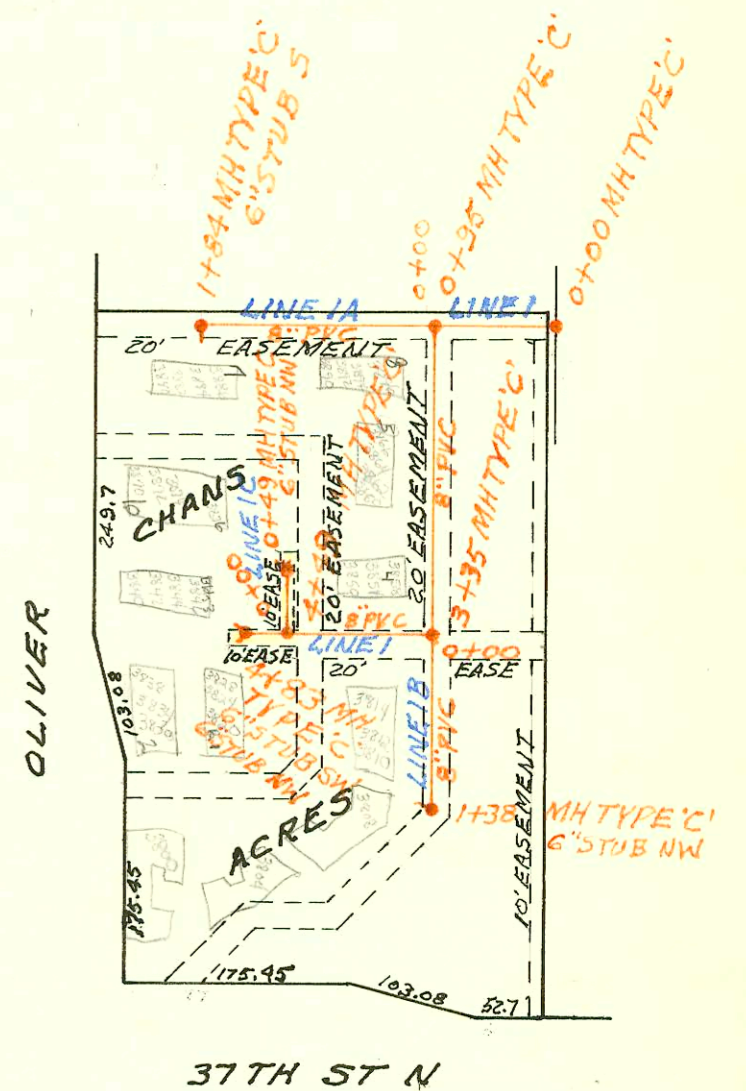
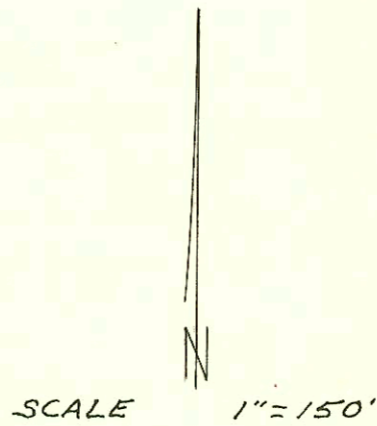
SAN SEWER FOR 1521 W 35TH ST. N.
 BUILT BY: R.D. CAMPBELL
 PROJ. N^o 468-76-245-80000-000-000-008
 BOOKED 6-14-83 FROM IIR

on map 143



SAN SEWER FOR CHAN'S ACRES ADDN
 BUILT BY: REISS & GOODNESS ENGRS
 PROJ. N^o 468-76-245-80000-000-000-008
 BOOKED 6-21-83 FROM A B PLAN

on map



CONSTRUCTION RECORD							SERVICE RECORD					
STATION	ELEVATION		Depth	MANHOLE	4-INCH "Y" BRANCHES		No. of Permit		House Number		DATE OF PERMITS	
	Ground	Grade			North West	South East	North West	South East	North West	South East	North West	South East
SAN SEWER FOR LAREDO VILLAGE LOT 10 BLK 1 SOUTHWEST VILLAGE 4TH ADDN												
LINE 1	0+00	102.85	90.40	12.5	0+00	0+42.0						
	1+00	103.2	90.73	12.5		1+84.0	1+80.5	8591	10578	3909 W 31st 101-6	3909 W 31st 101-6	12-16-83
	2+00	103.5	91.06	12.4		1+96.0	1+95.0	11190	11191	3909 W 31st 101-6	3909 W 31st 101-6	6-29-83
	3+00	103.0	91.39	11.6		2+31.0		11354		3909 W 31st 101-6	3909 W 31st 101-6	6-15-84
		102.8	91.51	11.3	3+35					3909 W 31st 101-6	3909 W 31st 101-6	6-15-84
LINE 2	0+00				0+00							
	1+00											
	2+00											
	3+00				3+49							
LINE 3	0+00				5+00							
	1+00											
	2+00											
	3+00				3+51							
SAN SEWER FOR 1521 W 35TH ST N												
	0+00	129.5	126.32	3.2	0+00							
		130.5	126.76	3.7	1+00					1521 W 35th N		5-26-83
SAN SEWER FOR CHAN'S ACRES ADDN												
LINE 1	0+00	184.1	177.26	6.8	0+00							
		186.4	177.53	8.9	0+95							
	1+00		177.66			1+47.0		8033		3870-76		5-3-83
	2+00		178.19			2+13.0		8034		3870-76		5-3-83
	3+00		178.73									
		185.2	178.92	6.3	3+35	3+47.0		8027		3870-76		5-3-83
	4+00		179.59									
		186.1	181.15	5.0	4+49							
		187.1	181.56	5.5	4+83	4+76.0		8029		3870-76		5-3-83
						6" STUB NW	6" STUB SW	8028		3870-76		5-3-83
LINE 1A	0+00	186.4	179.53	6.9	0+00=0+95							
	1+00		181.73									
		189.0	183.57	5.4	1+84	1+33.0		8022		3870-76		5-3-83
						6" STUB S						
LINE 1B	0+00	185.2	178.92	6.3	0+00=3+35							
	1+00		179.30									
		185.1	179.44	5.7	1+38							
						6" STUB NW						
LINE 1C	0+00	186.1	180.05	6.1	0+00=4+49							
		186.1	180.71	5.4	0+49	0+35.0		8030		3870-76		5-3-83
						6" STUB NW		8031		3870-76		5-3-83