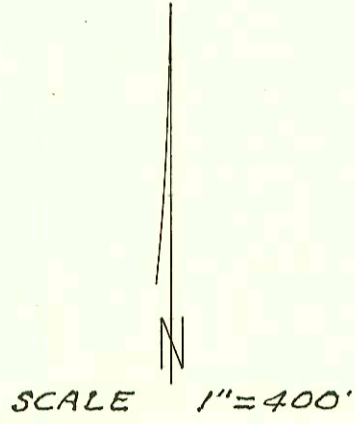
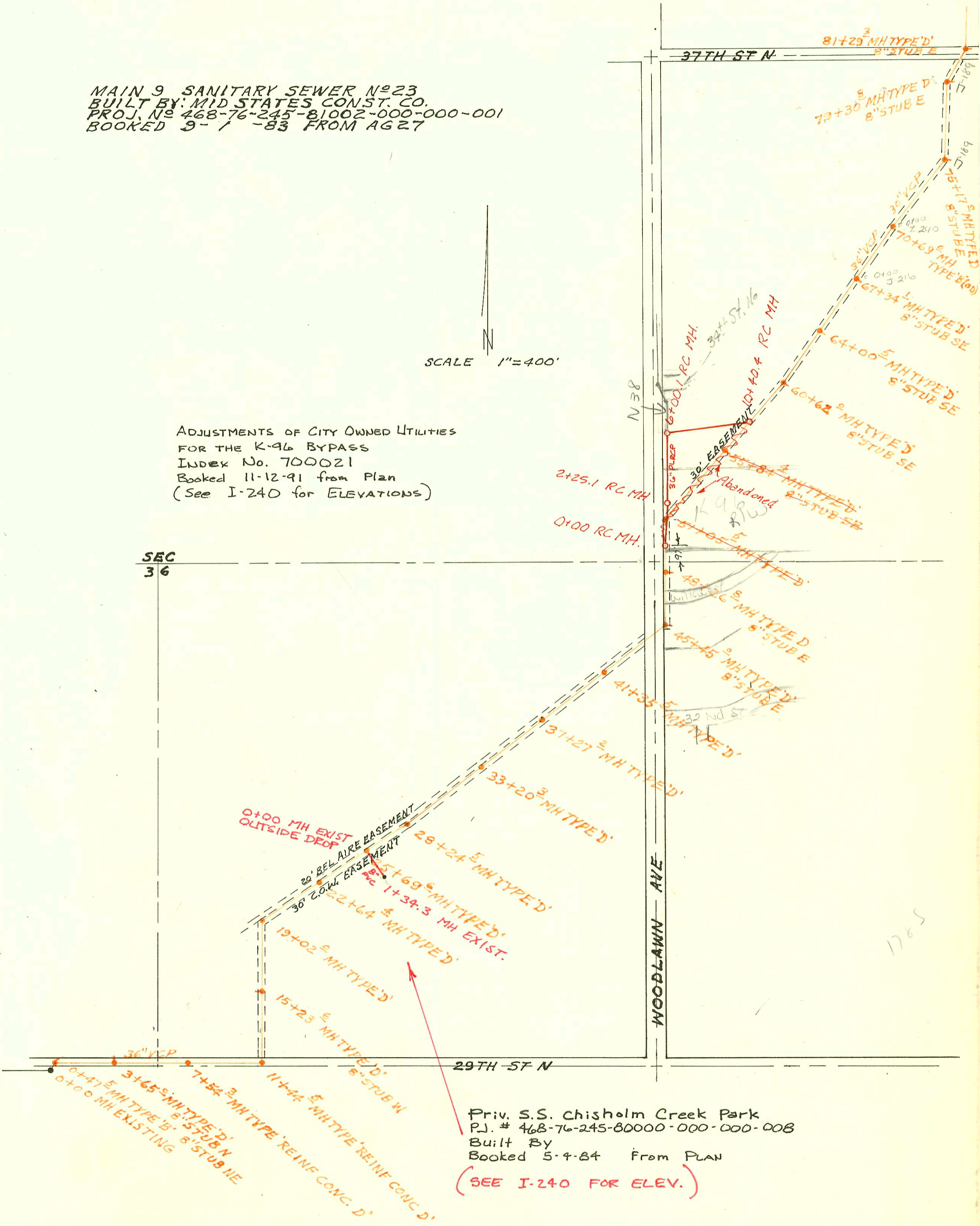


MAIN 9 SANITARY SEWER N<sup>o</sup>23  
BUILT BY: MID STATES CONST. CO.  
PROJ. N<sup>o</sup> 468-76-245-81002-000-000-001  
BOOKED 9-1-83 FROM AG 27



ADJUSTMENTS OF CITY OWNED UTILITIES  
FOR THE K-96 BYPASS  
INDEX No. 700021  
Booked 11-12-91 from Plan  
(See I-240 for ELEVATIONS)

SEC  
36



Priv. S.S. Chisholm Creek Park  
P.J. # 468-76-245-80000-000-000-008  
Built By  
Booked 5-4-84 From PLAN  
(SEE I-240 FOR ELEV.)

CONSTRUCTION RECORD							SERVICE RECORD					
STATION	ELEVATION		Depth	MANHOLE	4-INCH "Y" BRANCHES		No. of Permit		House Number		DATE OF PERMITS	
	Ground	Grade			North West	South East	North West	South East	North West	South East	North West	South East
MAIN 9 55 N <sup>o</sup> 23 (CONT'D)												
LINE 1 (CONT'D) 152+00	190.7	179.42	11.3									
	194.7	179.90	14.8	152+59.5	8" STUB N	8" STUB S						
153+00	193.5	180.23	13.3									
154+00	193.8	181.05	12.8									
155+00	194.1	181.87	12.2	MH 156+58.7 = 0700 MH old 210' x 2' x 2' 28" (Tapped 6" w/ 4" MH)	154+90.7		21412		8418 Mulberry		9-01-88	
156+00	195.9	182.69	13.2									
	198.1	183.33	14.8	156+78.7	8" STUB N	8" STUB S						
157+00	197.8	183.50	14.3									
158+00	198.7	184.30	14.4									
159+00	199.9	185.10	14.8									
160+00	200.8	185.90	14.9									
161+00	201.8	186.71	15.1	161+00.9	8" STUB N	8" STUB S						
162+00	201.4	187.50	13.9									
163+00	202.5	188.30	14.2									
164+00	203.3	189.10	14.2									
164+99.5	203.1	189.90	13.2	35' STEEL CASING PLUG								
LINE 1A 0+00	171.3	159.42	17.9	0+00=51+05.5 LINE 1								
1+00	167.3	153.72	13.6									
2+00	162.7	154.02	8.7									
2+20	163.3	154.08	9.2	PLUG								
LINE 2 0+00	173.5	158.58	14.9	0+00=70+09 LINE 1								
1+00	172.5	159.06	13.4									
2+00	172.8	159.54	13.3									
	173.6	159.56	14.0	2+04.9								
3+00	173.5	160.02	13.5									
4+00	173.3	160.49	12.8									
5+00	173.5	160.97	12.5									
	174.7	161.38	13.3	5+85.3	8" STUB N	8" STUB S						
6+00	174.5	161.45	13.1									
7+00	174.8	161.89	12.9									
8+00	174.9	162.34	12.6									
	175.5	162.48	17.0	8+30.5								
9+00	175.7	162.81	12.9									
10+00	175.9	163.29	12.6									
	178.1	163.62	14.5	10+70.3	8" STUB N	8" STUB S	23893		17055 2 35th Ct		9-15-89 #2000 Fee	Latent Paid 9/15/89 #2699
11+00	178.4	163.76	14.6									
12+00	180.4	164.24	16.2									