

RECON A PORTION OF DIST E SS N^o12
 BTW VASSAR & YALE - 13TH TO 15TH
 BUILT BY: UTILITY CONTR. INC.
 PROJ. N^o 468-76-245-81208-000-000-001
 BOOKED 9-13-83 FROM MGP 14
 SEE C225

plan map

*old records
 C-225*

SCALE 1" = 150'

15 TH 3+31' MH EXISTING

96	95	150
98	97	END REPAIR
100	99	2+10' BEGIN REPAIR
102	101	
104	103	END REPAIR
106	105	1+10' BEGIN REPAIR
108	107	END REPAIR
110	109	
112	111	
114	113	
116	115	
118	117	
120	119	0+10'
122	121	
124	123	
126	125	
128	127	
130	129	
132	131	
134	133	
136	135	
138	137	
140	139	
142	141	

14 TH 6+72' MH EXISTING
 6+40' MH TYPE 'A'

144	143	
146	145	
148	147	
150	149	
152	151	
154	153	
156	155	
158	157	
160	159	
162	161	
164	163	
166	165	
168	167	
170	169	
172	171	2+60' MH TYPE 'A'
174	173	2+40' MH TYPE 'A'
176	175	
178	174	
180	179	
182	181	1+30' MH TYPE 'A'
184	183	
186	185	
188	187	
190	189	

13 TH 0+00' MH EXISTING

VASSAR

YALE

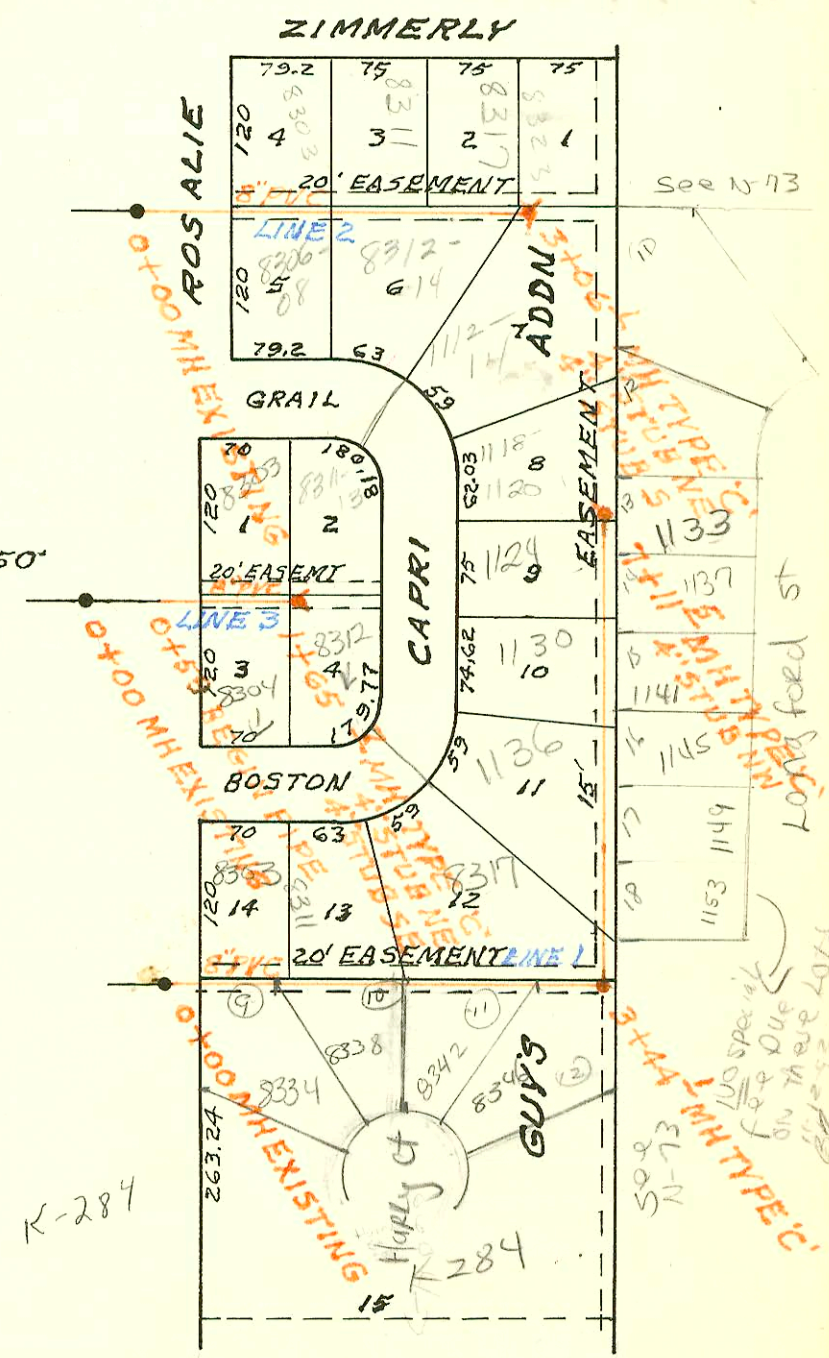
Note: for Yale Bl...
 See F-10 or F-207

LATERAL 12 MAIN II WAR INDUSTRIES SEWER
 BUILT BY: W.B. CARTER CONST. CO.
 PROJ. N^o 468-76-245-81179-000-000-001
 BOOKED 9-15-83 FROM MGP 23

plan map

12-60

SCALE 1" = 150'



R-284

Note: for Yale Bl...
 See F-10 or F-207

CONSTRUCTION RECORD						SERVICE RECORD						
STATION	ELEVATION		Depth	MANHOLE	4-INCH "Y" BRANCHES		No. of Permit		House Number		DATE OF PERMITS	
	Ground	Grade			North West	South East	North West	South East	North West	South East	North West	South East
RECON A PORTION OF DIST E S S N#12												
LINE 1 0+00	181.0	172.66	8.3	0+00 EXISTING	0+48 W							
					0+97 W	0+72 E						
1+00	181.7	173.18	8.5									
	181.82	173.34	8.5	1+30.0								
2+00	181.5	173.79	7.7		1+69 ² W	1+67 ² E						
	182.61	174.19	8.4	2+62.0	2+23 ² W	2+19 ² E						
					2+45 ² W							
3+00	184.2	174.41	9.8		2+97 ² W	2+68 ² E			1439 N			1-16-84
					3+71 ² W	3+66 ² E						
4+00	188.0	175.00	13.0		4+20 ² W	4+16 ² E			1439 N			
					4+72 ² W	4+42 ² E			Vassac			
5+00	190.2	175.59	14.6		5+33 ² W	4+97 ² E						
						5+55 ² E						
6+00	190.0	176.17	13.8		6+14 ² W	6+24 ² E						
	189.11	176.41	12.7	6+40.6								
		176.85	12.3									
	187.5	177.02	10.5	6+72.9								
LATERAL 12 MAIN 11 WIS												
LINE 1 0+00	164.1	153.82	10.3	0+00 EXISTING	0+98.0 TAP	4" SDR 35 2+40.0 TAP	21453	932517	8303 BOSTON	8354 Hally Ct	9-8-82	2-10-93
1+00	162.3	154.36	7.9		1+47.0 TAP		19161	9641837	8311 E BOSTON	8338 Hally Ct	9-27-87	1-3-91
2+00	163.8	154.90	8.9		2+00 TAP	2+29.1 TAP	18720	7786	8312 BOSTON	8307 ? Hally Ct	7-16-87	12-5-83
3+00	165.2	155.44	9.8			4" SDR 35 2+42.1 TAP	92-978617		8346 E Hally Ct			5-27-92
	165.4	155.68	9.7	3+44.1			9785		8309 Hally Ct			12-5-83
4+00	165.8	155.98	9.8			4" SDR 35 4+02.1 TAP	93-29067-7		1153 S Longford			11-12-93
						4+86.1 TAP	95-839-7	1136 S. CAPRI	1145 Longford		7-16-87	1-23-95
5+00	166.7	156.52	10.2			5+71.0 TAP	2000-01550		1145 S Longford			7-5-00
						4" SDR 35 5+85.0 TAP	18832	74114147	1133 S Longford	1141 Longford	8-4-87	7-20-91
6+00	167.3	157.07	10.2			6+86.5 TAP	21518	9414127	1124 S. CAPRI	1137 Longford	9-15-87	7-1-91
7+00	168.2	157.61	10.6						116-120 CAPRI	1133 Longford	3-16-87	3-29-00
	168.6	157.67	10.9	7+11.5	4" STUB NW		17945					
LINE 2												
0+00	167.2	157.52	9.7	0+00 EXISTING								
1+00	165.7	158.02	7.7		1+29.0 TAP	1+11.1 TAP	10255	11832	8303 S. CAPRI	8306 S. CAPRI	3-2-84	8-21-84
						1+32.1 TAP		11833	8308 S. CAPRI	8302 S. CAPRI		8-21-84
2+00	165.7	158.53	7.2		2+76.1 TAP	1+94.1 TAP	2740	11845	8311 E BOSTON	8312 S. CAPRI	2-26-83	8-22-84
					2+80.1 TAP	2+12.1 TAP	9075	11846	8317 BOSTON	8314 S. CAPRI	2-26-83	8-22-84
3+00	167.4	159.03	8.4			3+01.1 TAP		13918	1112-14 S. CAPRI			5-31-85
	167.3	159.06	8.2	3+06.1	4" STUB NE	4" STUB S	10856		8328 E BOSTON			3-2-84
LINE 3												
0+00	168.5	156.00	12.5	0+00 EXISTING								
0+59	168.1	156.11	12.0									
1+00	168.0	156.18	11.8		1+43.8 TAP	1+44.7 TAP	17427	18207	8302 E BOSTON	8301 BOSTON	12-10-86	8-3-91
	167.6	156.30	11.3	1+65.7	4" STUB NE	4" STUB SE	10887	18201	8303 E BOSTON	8312 E BOSTON	5-10-84	4-23-87

(1 row)
(2 rows)

||||