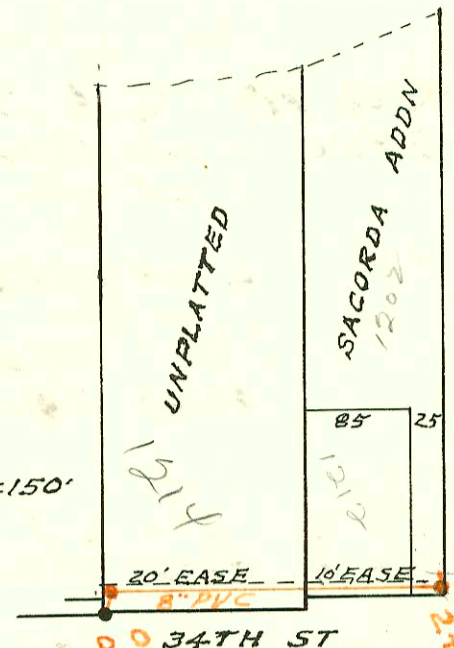


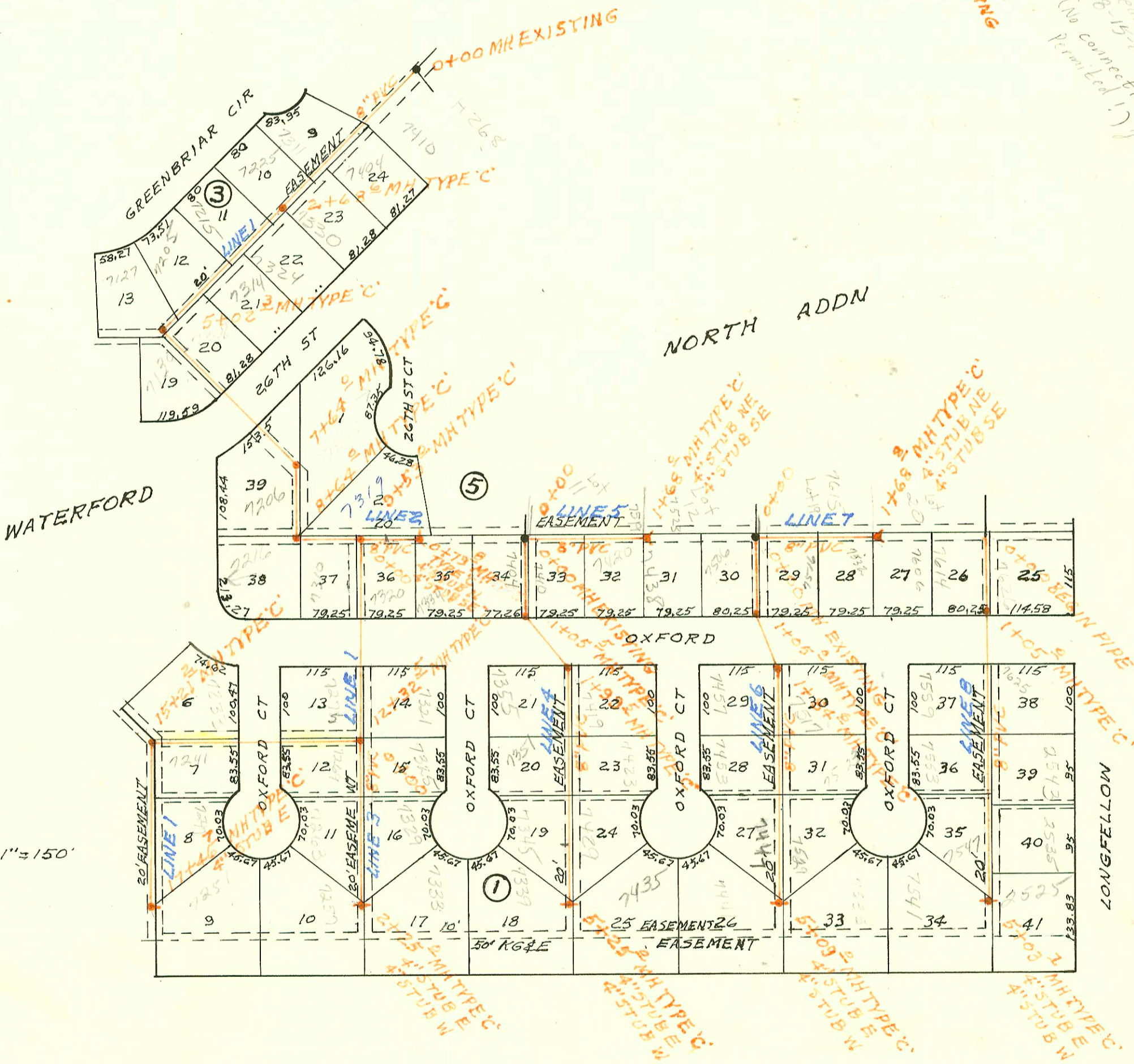
LATERAL TO MAIN 17 SAN SEWER No 22
BUILT BY: W.B. CARTER CONST. CO.
PROJ. No 468-76-245-81264-000-000-001
BOOKED 9-22-83 FROM DLK 455

on map
26

SCALE 1"=150'



UNPLATTED
SACORDA ADDN
85 25
121.2
20' EASE
10' EASE
8" PVC
34TH ST
2+1/2" MH TYPE 'A'
5' stub
8-15-84
Permi. Led. (No connection to this MH.)



SCALE 1"=150'

LATERAL 26 MAIN 7 SS No 23
BUILT BY: OURSLER BROS. CONST. CO.
PROJ. No 468-76-245-81112-000-000-001
BOOKED 9-30-83 FROM AG 16

on map
12-32

CONSTRUCTION RECORD						SERVICE RECORD						
STATION	ELEVATION		Depth	MANHOLE	4-INCH "Y" BRANCHES		No. of Permit		House Number		DATE OF PERMITS	
	Ground	Grade			North West	South East	North West	South East	North West	South East	North West	South East
LATERAL 70 MAIN 17 S.S. No 22												
0+00	130.2	125.10	5.1	EXISTING								
	131.2	125.22	6.0	0+18								
1+00	130.9	125.80	5.3									
2+00	130.0	126.07	3.9		1+78.2 ^{top}		8728		1202 ^W 1219 ^E		8-5-83	
	130.2	126.37	3.8	2+72.1	2+61.1 ^{top}		11215		1134 ^E		10-29-86	
LATERAL 26 MAIN 7 S.S. No 23												
LINE 1 0+00	195.2	184.83	10.4	EXISTING								
1+00	195.2	185.34	9.9		1+35 ^{top}				7410 E			3-18-85
2+00	195.7	185.85	9.9		1+72.6 ^{top}	1+53.6 ^{top}	13247	11831	7311 Greenview 7404 2620 CT		10-16-84	8-21-84
	195.7	186.20	9.5	2+68.6	2+15.1 ^{top}			12659	7330 2623 (N)			11-27-84
		186.30	9.4	2+74.2	2+74.2 ^{top}			11829	7205 2623 (N)		8-21-84	
3+00	195.9	186.47	9.4		3+29.1 ^{top}	3+15.3 ^{top}	13368	13276	7215 7324 E		10-22-84	2-20-85
						3+98.3 ^{top}		13528	7314			4-17-85
4+00	197.0	187.00	10.0		4+17.3 ^{top}			11575	7205		7-19-84	
					4+99.7 ^{top}	4+78.8 ^{top}		11828	14018	7187 7130 2611 N	8-21-84	6-18-85
5+00	196.9	187.54	9.4			5+42.3 ^{top}		13778	7205			12-12-84
	196.9	187.55	9.4	5+02.3								
6+00	198.0	188.01	10.0									
7+00	198.8	188.48	10.3									
	199.8	188.88	11.0	7+64.0								
8+00	200.2	189.21	11.0		8+27.0 ^{top}	7+76.0 ^{top}		12045	7315 2623 (N)			7-18-84
	200.9	189.79	11.1	8+64.0		8+60.0 ^{top}	10609	10821	7206 Oxford		4-12-84	5-8-84
9+00	201.0	190.08	10.9			9+13.5 ^{top}		11177	7310 E Oxford			6-12-84
	201.1	190.60	10.5	9+53.0								
10+00	201.7	190.97	10.7									
11+00	203.2	191.77	11.4									
					11+77.5 ^{top}			9313	7272 Oxford		9-27-83	
12+00	204.3	192.57	11.7			12+01.8 ^{top}		9228	7321 Oxford			9-27-83
	204.8	192.83	12.0	12+32.5								
		192.93	11.9									
13+00	204.2	193.22	11.0									
14+00	203.8	193.66	10.1									
15+00	201.8	194.10	7.7		15+10.2 ^{top}			8666	7285 Oxford		7-2-83	
	201.5	194.19	7.3	15+21.2								
					15+73.2 ^{top}			11014	7241 Oxford			5-24-84
16+00	202.0	194.52	7.5		16+32.0 ^{top}			8665	7247 Oxford			7-8-83
17+00	202.6	194.94	7.7									
	203.3	195.14	8.2	17+46.7				11434	7251 Oxford			7-11-84
LINE 2 0+00	201.1	190.60	10.5	EXISTING	0+44.8 ^{top}	0+42.0 ^{top}	11728	10610	7319 Oxford 7320 Oxford		8-10-84	4-12-84
	201.1	191.27	9.8	0+79.8	4'STUB N	4'STUB SE		11435	7324 Oxford			7-11-84
LINE 3 0+00	204.8	192.93	11.9	EXISTING	0+15.1 ^{top}	0+15.0 ^{top}	9037	10060	7207 Oxford 7225 Oxford		8-22-83	1-26-84
1+00	206.0	194.13	11.9									
2+00	207.5	195.32	12.2		2+78.0 ^{top}			9293	7265 Oxford			1-12-84
	207.8	195.62	12.2	2+25.0	4'STUB W	4'STUB E		9314	7327 Oxford 7333 E		9-16-83	9-27-83