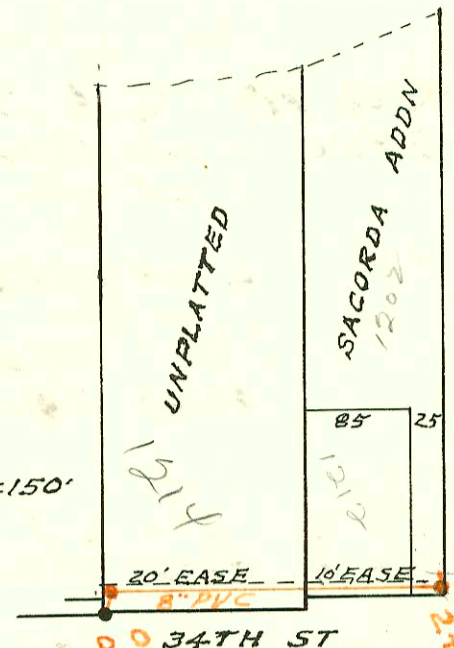


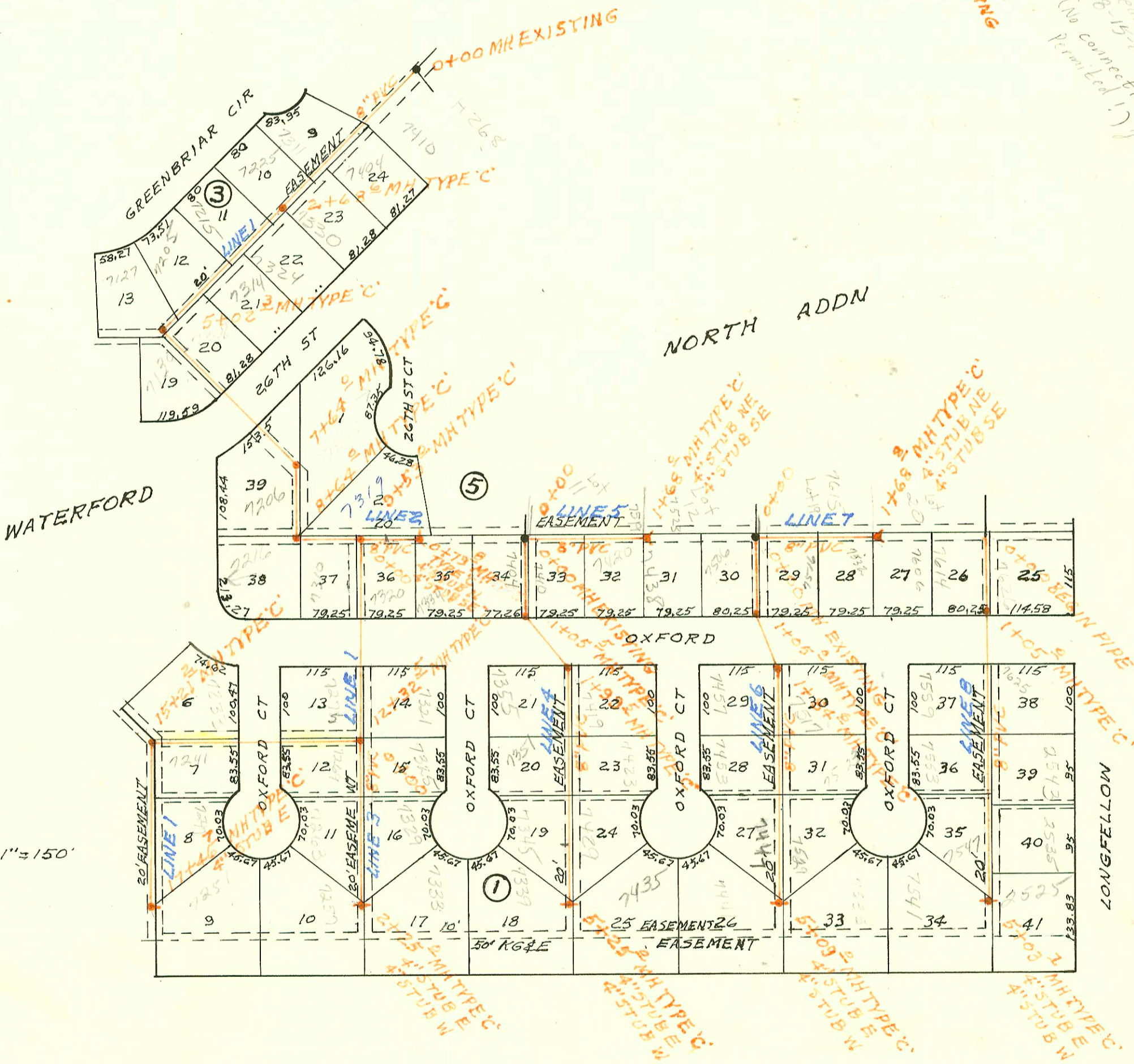
LATERAL TO MAIN 17 SAN SEWER N^o 22
BUILT BY: W.B. CARTER CONST. CO.
PROJ. N^o 468-76-245-81264-000-001
BOOKED 9-22-83 FROM DLK 455

28 map
26

SCALE 1"=150'



2+72 1" MH TYPE 'A'
5' stub sealed
8-15-84
(No connection to this MH. Permitted!)



LATERAL 26 MAIN 7 SS N^o 23
BUILT BY: OURSLER BROS. CONST. CO.
PROJ. N^o 468-76-245-81112-000-001
BOOKED 9-30-83 FROM AG 16

28 map
12-32

I244

CONSTRUCTION RECORD							SERVICE RECORD					
STATION	ELEVATION		Depth	MANHOLE	4-INCH "Y" BRANCHES		No. of Permit		House Number		DATE OF PERMITS	
	Ground	Grade			North West	South East	North West	South East	North West	South East	North West	South East
LAT 26 MAIN 7 55 N#23 (CONT'D)												
LINE 4 0+00	203.5	190.87	12.6	0+00 EXISTING	0+02.0	0+23.0	8667	8668	7404 Oxford	7410 Oxford	7-8-83	7-8-83
1+00	204.0	192.06	11.9									
	204.0	192.13	11.9	1+05.5								
	205.3	193.19	12.1	1+99.5								
2+00	205.3	193.20	12.1		2+18.5		10005		7355 Oxford Ct		1-13-84	
						2+71.1		9227	7419 Oxford Ct			9-27-83
3+00	206.6	194.55	12.1									
					3+91.5	3+86.0	9557	11508	7351 Oxford Ct	7423 Oxford Ct	10-28-83	9-14-84
4+00	208.0	195.90	12.1									
					4+69.0	4+53.0	12124	9753	7345 Oxford Ct	7429 Oxford Ct	10-19-84	11-29-83
5+00	209.4	197.25	12.2									
	210.0	197.59	12.4	5+25.0	4" STUB W	4" STUB E	9752	1013	7337 Oxford Ct	7355 Oxford Ct	11-29-83	5-24-84
LINE 5												
0+00	203.5	190.87	12.6	0+00 EXISTING								
					0+89.0		9757		7519 Oxford Ct		3-21-83	
1+00	202.2	192.14	10.1			1+51.5		10870		7420 E Oxford		5-9-84
	203.2	193.01	10.2	1+68.0	4" STUB NE	4" STUB SE	8940	13264	7523 Oxford Ct	7438 Oxford Ct	8-9-83	3-19-85
LINE 6												
0+00	204.3	193.08	11.2	0+00 EXISTING	0+10.0		10611		7506 Oxford		4-12-84	
1+00	206.3	194.61	11.7									
	206.5	194.69	11.8	1+05.0								
	207.7	195.66	12.0	1+84.6								
2+00	207.3	195.84	11.5		2+09.6	2+13.3	9254	11022	7457 Oxford Ct	7514 Oxford Ct	9-23-83	1-25-84
						2+87.6		13105	7503 Oxford Ct			9-25-84
3+00	209.1	197.01	12.1		3+25.0		9255		7455 Oxford		9-23-83	
4+00	210.4	198.18	12.2		4+25.0	4+49.0	10201	10775	7447 Oxford Ct	7529 Oxford	2-13-84	4-24-84
5+00	211.6	199.35	12.3									
	211.7	199.46	12.2	5+09.0	4" STUB W	4" STUB E	10058	10059	7441 Oxford Ct	7535 Oxford Ct	1-26-84	1-26-84
LINE 7												
0+00	204.3	193.47	10.8	0+00 EXISTING	0+29.0		10612		7516 Oxford		4-12-84	
					0+84.0		8742		7615 Oxford Ct		7-19-83	
1+00	205.8	194.67	11.1			1+04.8		10445	7532 Oxford		2-16-84	
	206.9	195.50	11.4	1+68.8	4" STUB NE	4" STUB SE	10152		7600 Oxford		2-7-84	
LINE 8												
0+00	206.0	194.80	11.2	0+00 EXISTING PIPE	0+37.0	0+25.0	8402	8407	7614 Oxford	7626 Oxford	7-8-83	7-8-83
1+00	208.3	195.07	13.2									
	208.5	195.08	13.4	1+05.0								
	208.5	196.90	11.6									
2+00	210.2	198.16	12.04		2+47.0	2+30.2	10202	8941	7557 Oxford	7625 Oxford	9-13-84	8-7-83
3+00	211.9	199.48	12.42		3+09.2	3+21.7	9107	9108	7553 Oxford Ct	7543 Longfellow	8-31-83	8-31-83
4+00	213.8	200.81	12.99		4+03.7	4+15.7	9687	10007	7549 Oxford Ct	7535 Longfellow	11-17-83	1-12-84
5+00	215.7	202.13	13.57									
	215.7	202.18	13.52	5+03.7	4" STUB W	4" STUB E	8941	19502	7541 Oxford	7525 Longfellow	7-19-83	4-17-85
LATERAL 20 MAIN 22 WIS												
LINE 1 0+00	206.8	192.56	14.2	0+00 EXISTING								
1+00	204.6	193.00	11.6									
2+00	203.5	193.44	10.1									
						2+70.0		11527	9113 Longfellow			7-17-84
3+00	204.7	193.88	10.8			2+83.0		11526	9111 E Longfellow			7-19-84
	206.8	194.04	12.8	3+36.0								

1. The first part of the document
 discusses the general principles
 of the system. It is divided into
 several sections, each dealing with
 a different aspect of the overall
 framework. The first section
 covers the basic concepts and
 terminology used throughout the
 document.

2. The second part of the document
 provides a detailed description of
 the system's architecture. It
 outlines the various components
 and their interactions. This
 section is particularly important
 as it provides a clear picture
 of how the system is organized
 and how it operates.

3. The third part of the document
 describes the implementation of the
 system. It details the various
 steps and processes involved in
 building the system. This section
 is crucial for understanding the
 practical aspects of the system
 and for identifying any potential
 challenges or limitations.

4. The fourth part of the document
 discusses the results of the
 implementation. It presents the
 data and findings from the
 various tests and evaluations
 conducted. This section is
 essential for assessing the
 performance and effectiveness of
 the system.

5. The final part of the document
 provides a summary of the
 entire project. It highlights the
 key achievements and lessons
 learned. This section is
 important for providing a
 clear overview of the project
 and for identifying areas for
 future research and development.