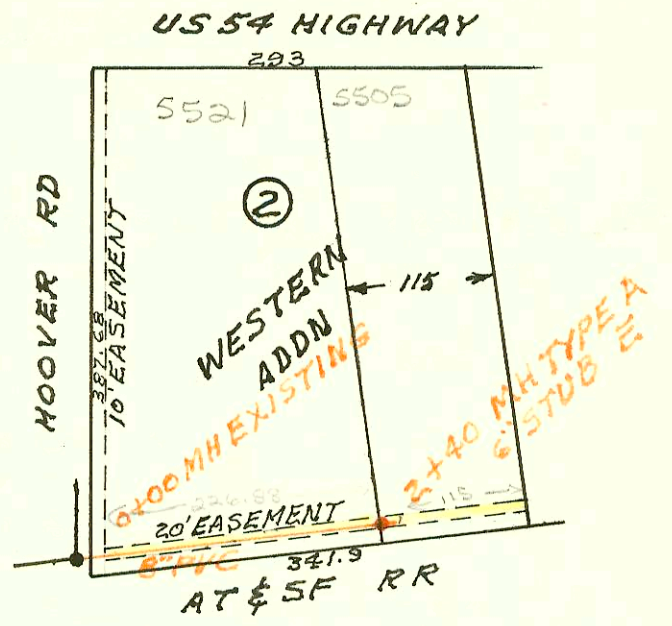


LATERAL 182 SOUTHWEST INTERCEPTOR SEWER
 BUILT BY: MID STATES CONST. CO.
 PROJ. N^o 468-76-245-81304-000-001
 BOOKED 10-28-83 FROM DLK 273

on map P 660

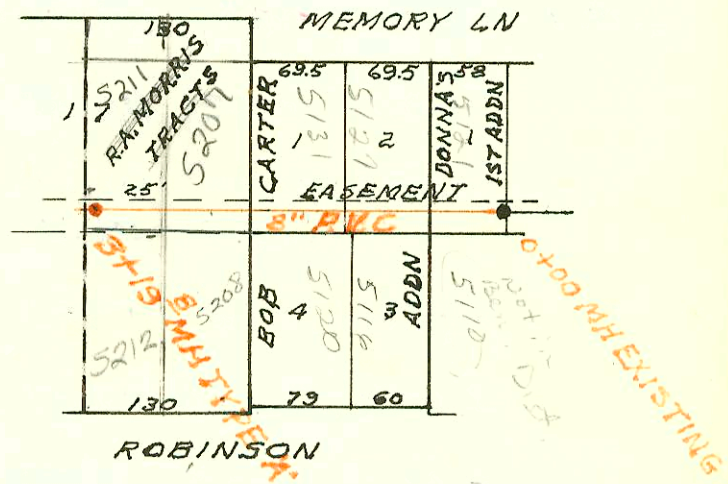
SCALE 1"=150'



LATERAL 238 MAIN 5 SAN SEWER N^o 22
 BUILT BY: W.B. CARTER CONST. CO.
 PROJ. N^o 468-76-245-81289-000-001
 BOOKED 10-31-83 FROM DLK 380

on map P 645

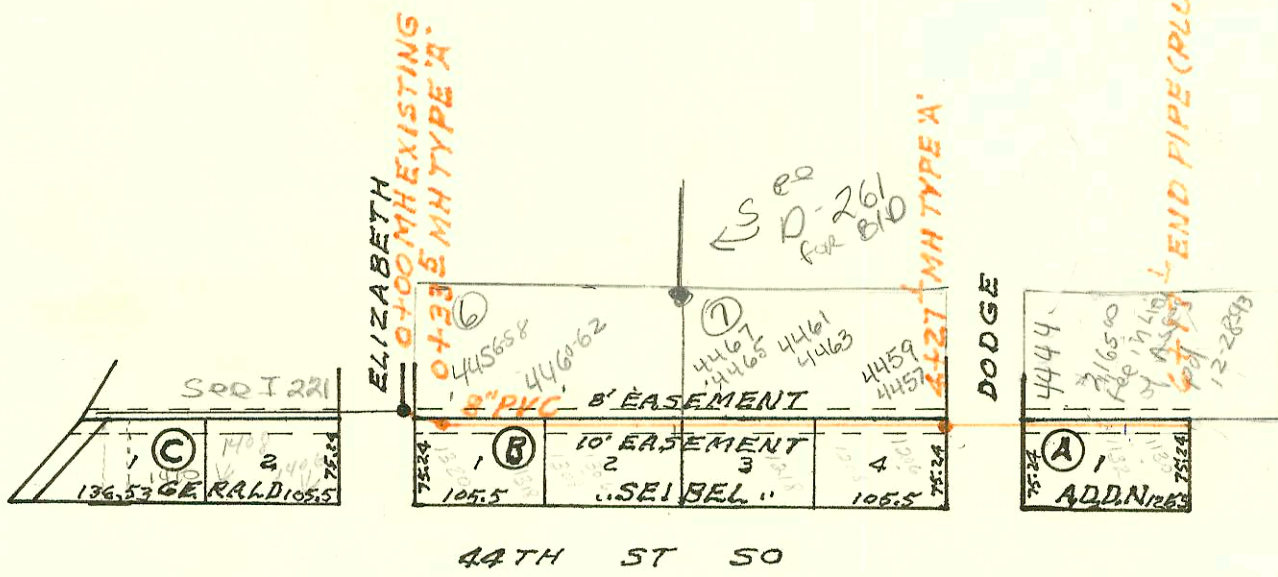
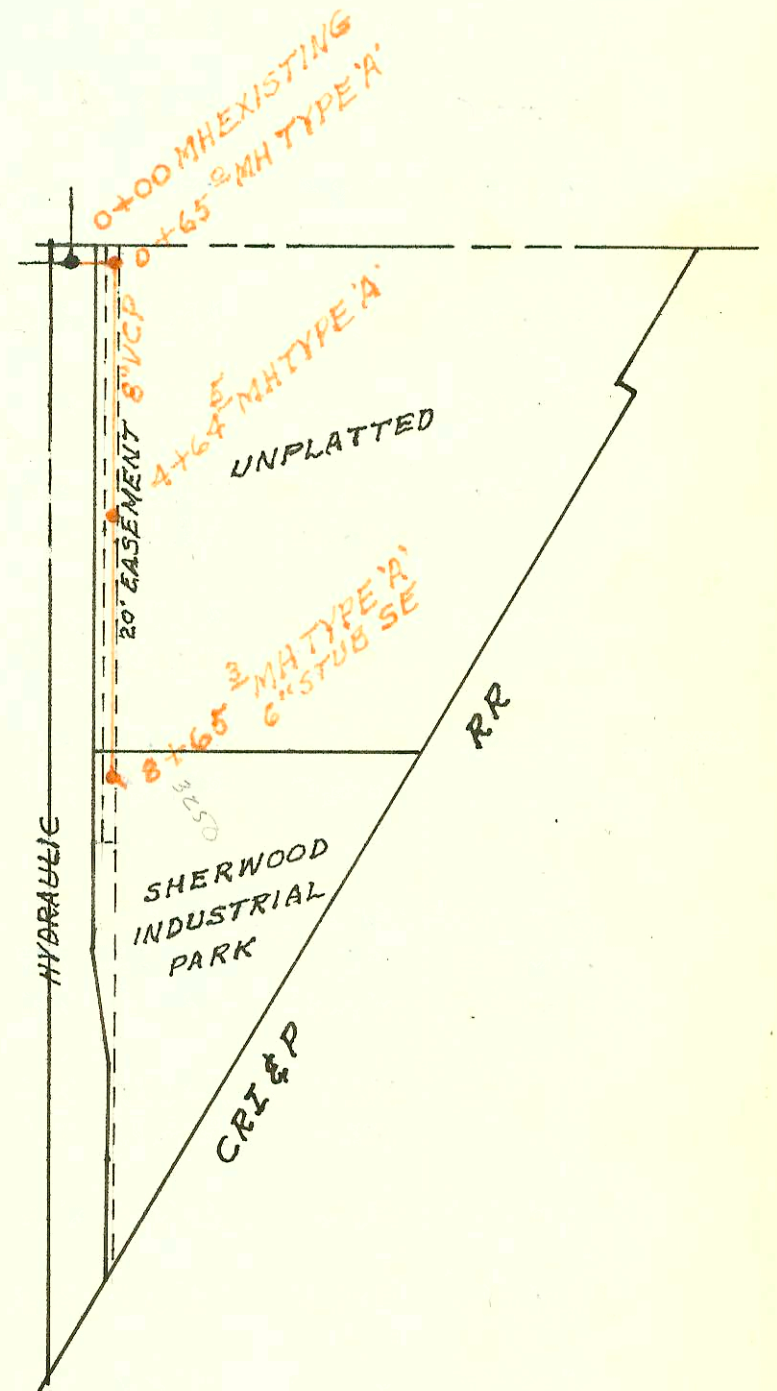
SCALE 1"=150'



LATERAL 94 MAIN 4 SAN SEWER N^o 23
 BUILT BY: BARNES & MORRIS CONST. CO.
 PROJ. N^o 468-76-245-80471-000-000-001
 BOOKED 11-2-83 FROM MGP 28

on map 10-28

SCALE 1"=300'



LATERAL 35 MAIN 3 SOUTHWEST INTERCEPTOR
 BUILT BY: W.B. CARTER CONST. CO.
 PROJ. N^o 468-76-245-81204-000-000-001
 BOOKED 11-3-83 FROM DRH 8

on map P. 883

SCALE 1"=150'



CONSTRUCTION RECORD							SERVICE RECORD					
STATION	ELEVATION		Depth	MANHOLE	4-INCH "Y" BRANCHES		No. of Permit		House Number		DATE OF PERMITS	
	Ground	Grade			North West	South East	North West	South East	North West	South East	North West	South East
LAT 182 SWI												
0+00	123.4	112.62	10.8	0+00 EXISTING								
					0+87.0		13127		5521 w		3-4-85	
1+00	121.5	113.02	8.5									
2+00	122.0	113.43	8.6									
	121.7	113.59	8.1	2+40		6" STUB E						
LAT 238 MAIN 5	5.5	N#22										
0+00	126.5	118.06	8.4	0+00 EXISTING	0+33.0		9595		5121		11-2-83	
					0+25.0		9460		5116 w		10-18-83	
1+00	126.0	118.40	7.6		1+04.8		9912		5127		12-15-83	
					1+79.2	1+51.8	10054	9913	5131	5120	1-25-84	12-15-83
2+00	126.1	118.74	7.4		2+25.8 TAP	2+29.8 TAP	93504	913174.7	5207	5208	7-10-89	8-30-91
					2+23.8 TAP	2+23.8 TAP	23659		5212	5208	8-1-89	
3+00	125.2	119.08	6.1		3+00.8 TAP	3+00.8 TAP	73-136727		5212	5212	5-25-93	
	125.2	119.15	6.1	3+19.8								
LAT 24 MAIN 4		SAN SEWER		N#23								
0+00	132.6	123.84	8.8	0+00 EXISTING								
	133.3	124.23	9.1	0+65.0								
1+00	133.3	124.38	8.9									
2+00	133.7	124.80	8.9									
3+00	133.4	125.23	8.2									
4+00	133.1	125.66	7.4	4+64.5								
	133.2	125.93	7.3	4+64.5								
5+00	132.7	126.07	6.6									
6+00	132.7	126.46	6.2									
7+00	132.9	126.85	6.1									
8+00	133.0	127.24	5.8									
	133.4	127.49	5.9	8+65.3		6" STUB SE	27026		3302 N (Sealey)		2-7-91	
							10544		3350 N		4-3-84	
LAT 35 MAIN 3		SWI										
0+00	87.0	81.69	5.3	0+00 EXISTING								
	87.7	81.80	5.9	0+33.5								
					4" SCH 40 PL 0+66.5 TAP	0+62.5	2001 81295	9390	44658	1218-20	8/3/01	10-10-83
1+00	87.3	82.02	5.3						44658	1218-20	8/3/01	10-10-83
									44658	1218-20	8/3/01	10-10-83
2+00	87.6	82.34	5.3						44658	1218-20		9-24-94
					4" SCH 40 3+68.6		2002 20049	2002-20048	4465-67	1218-20	2-15-02	
3+00	87.7	82.67	5.0				2002-20048	2002-20047	4467-63	1218-20	2-15-02	10-10-83
									4467-63	1218-20	2-15-02	
4+00	87.2	82.99	4.2						4467-63	1218-20	2-15-02	
	90.1	83.08	7.0	4+27.1					4467-63	1218-20	2-15-02	
5+00	89.2	83.32	5.9									
					4" Sch 40 PVC 5+60.7	5+65.1	21-121-7	2387	4444 S	1218-20	1-4-94	10-10-83
6+00	88.3	83.64	4.7									
6+17.1	88.4	83.70	4.7	PLUG								