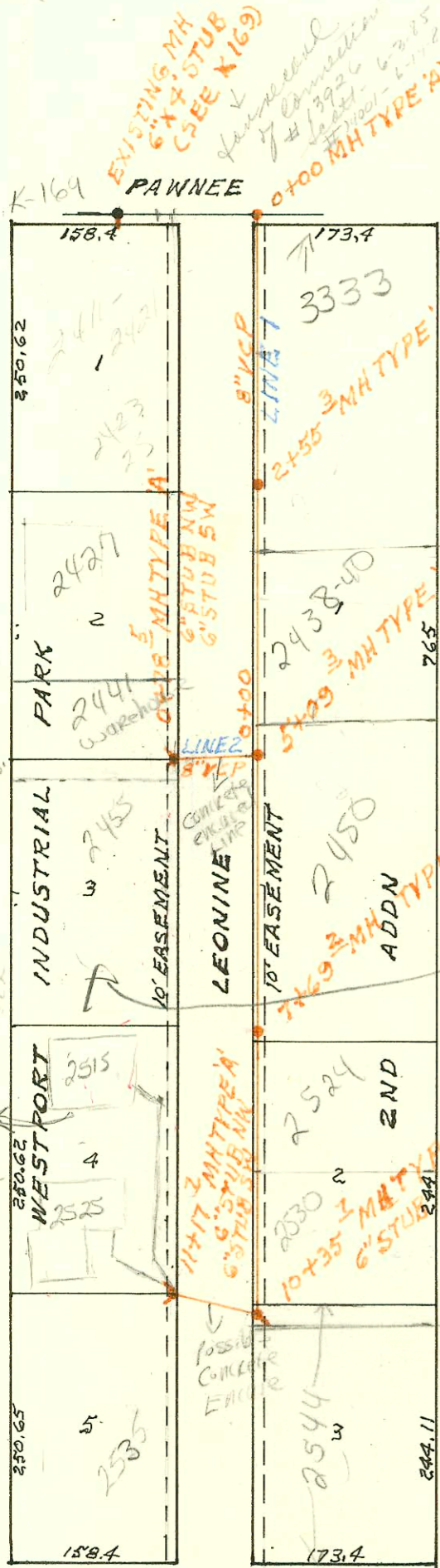


RECON PART OF LATERAL S DIST T SAN SEWER N20
 BUILT BY: BARNES & MORRIS
 PROJ. N2 468-76-245-81257-000-000-001
 BOOKED 11-14-83 FROM DLK 351
 (SEE G3)



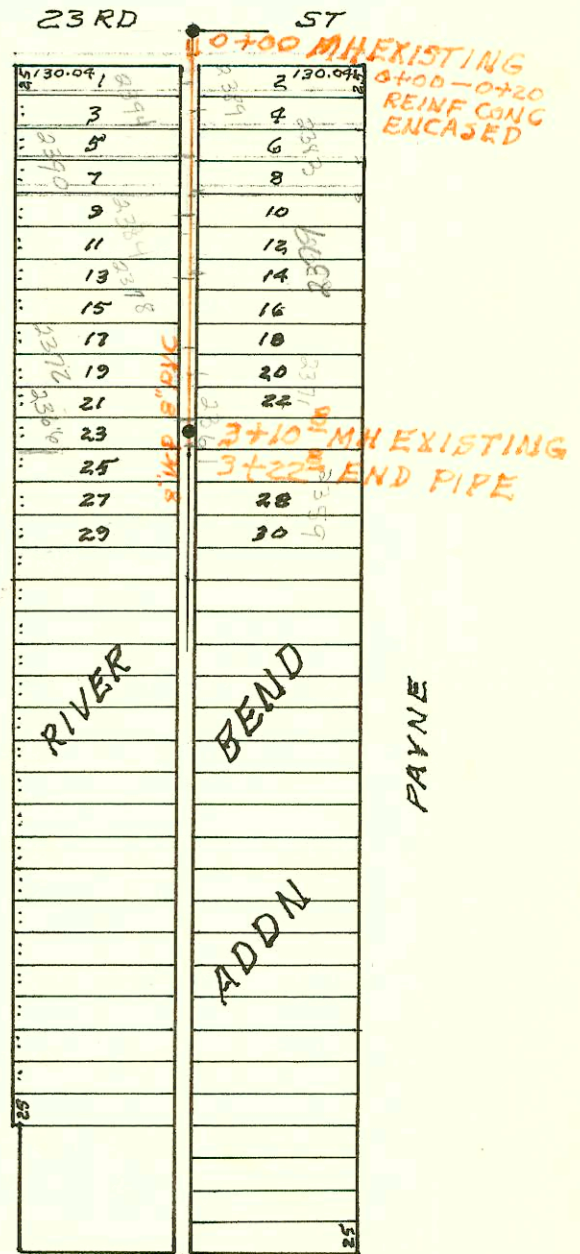
Private sewer
 from
 2525
 Leonine
 to
 2515
 Leonine
 dated
 1-2-60

SCALE 1" = 150'

V. Huang, adv on
 8/7/63 that Main 20
 will be S. from MH 0978.5
 instead of across street from
 MH 7+69.2. Do not issue
 sewer permit until
 PPS has been released
 thru City Engineer

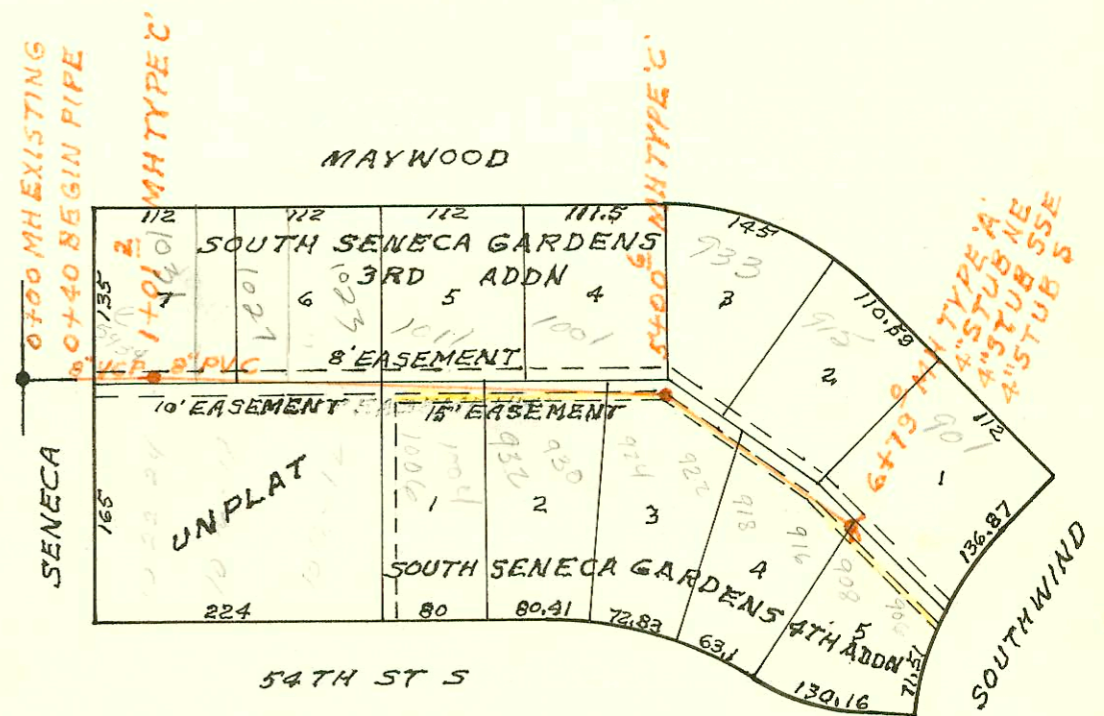
LATERAL 3 MAIN 20 SAN SEWER N22
 BUILT BY: BARNES & MORRIS
 PROJ. N2 468-76-245-80130-000-000-001
 BOOKED 11-16-83 FROM DRH 16

P 7-68 map



22ND ST

HOOD RIVER BEND ADDN PAYNE



SCALE 1" = 150'

LATERAL 37 MAIN 3 SOUTHWEST INTERCEPTOR SEWER
 BUILT BY: DULING CONST. CO. INC.
 PROJ. N2 468-76-245-80853-000-000-001
 BOOKED 11-17-83 FROM BR44

on map 8-90

CONSTRUCTION RECORD						SERVICE RECORD						
STATION	ELEVATION		Depth	MANHOLE	4-INCH "Y" BRANCHES		No. of Permit		House Number		DATE OF PERMITS	
	Ground	Grade			North West	South East	North West	South East	North West	South East	North West	South East
RECON PART OF LAT 5 DIST T 55 N ^o 20												
0+00	123.3	118.50	4.8	EXISTING								
0+20					0+36.5 4" W	0+63.5 4" E	9162		2374 Hood			9-13-83
1+00	125.3	118.59	6.7		0+27.5 4" W		9164	9163	2370 Hood	2389 Hood		9-13-83
2+00	125.5	118.69	6.8		1+33.5 4" W	1+26.8 4" E	9166	9165	2384 Hood	2383 Hood		9-13-83
3+00	125.3	118.78	6.5		1+33 4" W	1+62 4" E	9168	9167	2378 Hood	2377 Hood		9-13-83
	125.2	118.79	6.7		2+45 4" W	2+41 4" E	9169		2374 Hood	2371 Hood		9-13-83
		118.89	6.3	3+10.8 EXIST	3+00 4" W	2+96.5 4" E	9170	9171	2306 Hood	2361 Hood		9-13-83
3+22.8	124.9	118.90	6.0	END								
LAT 3 MAIN 20 S5 N ^o 22												
0+00	104.7	95.90	8.8	EXISTING								
1+00	105.2	96.30	8.9									
2+00	105.3	96.69	8.6									
	105.4	96.91	8.5	2+55.3								
3+00	104.8	97.03	7.8									
4+00	104.0	97.31	6.7					97-1111-7	2438 Leonine			7-1-97
5+00	105.0	97.59	7.4									
	105.7	97.62	8.1	5+09.3								
6+00	104.3	97.92	6.4				5+93.7	9544	2453 Leonine			10-28-83
7+00	103.0	98.26	4.7						2455 Leonine			3-29-86
	105.0	98.49	6.5	7+69.2								
8+00	103.3	98.59	4.7					92-4493-7	2524 Leonine			12-15-92
9+00	103.3	98.90	4.4									
10+00	103.4	99.22	4.2									
	104.3	99.33	5.0	10+35.7								
11+00	103.5	99.70	3.8									
	104.5	99.80	4.7	11+17.7	4" SCH 40	4" SCH 40	92-12328-7	92-12328-7	2525 Leonine	2526 Leonine		5-24-89
LINE 2												
0+00	105.7	97.72	8.0	EXISTING								
	106.0	98.35	7.7	0+78.5	4" SCH 40	4" SCH 40	20824	96-151-7	2544 Leonine	2545 Leonine		2-20-01
LAT 37 MAIN 3 SWI												
0+00	82.1	74.23	7.9	EXISTING								
0+40	81.6	74.60	7.0									
1+00	81.7	74.71	7.0									
	81.8	74.71	7.1	1+01.2								
2+00	81.6	75.02	6.6									
3+00	82.5	75.33	7.2									
4+00	82.9	75.64	7.3									
5+00	82.5	75.95	6.6									
	75.99	75.99	6.5	5+00.6								
6+00	82.0	76.30	5.7									
	82.0	76.55	5.5	6+79.0								

Rep to exist 2000-02006-2525 Leonine-9/1/00-BTL-4" SCH 40 - ITW in CO, 1425, 2445 - serves new p/b in exist bldg - connected

96-4259-7 4-1-96 - 2455 S. Leonine (MM Tap off old pot sewer main. due to concrete encased line 3) - 4" PVC 40
 4-6-96 2427 S. Leonine - sewer main (rew) verified that this bldg tapped to MM-01785