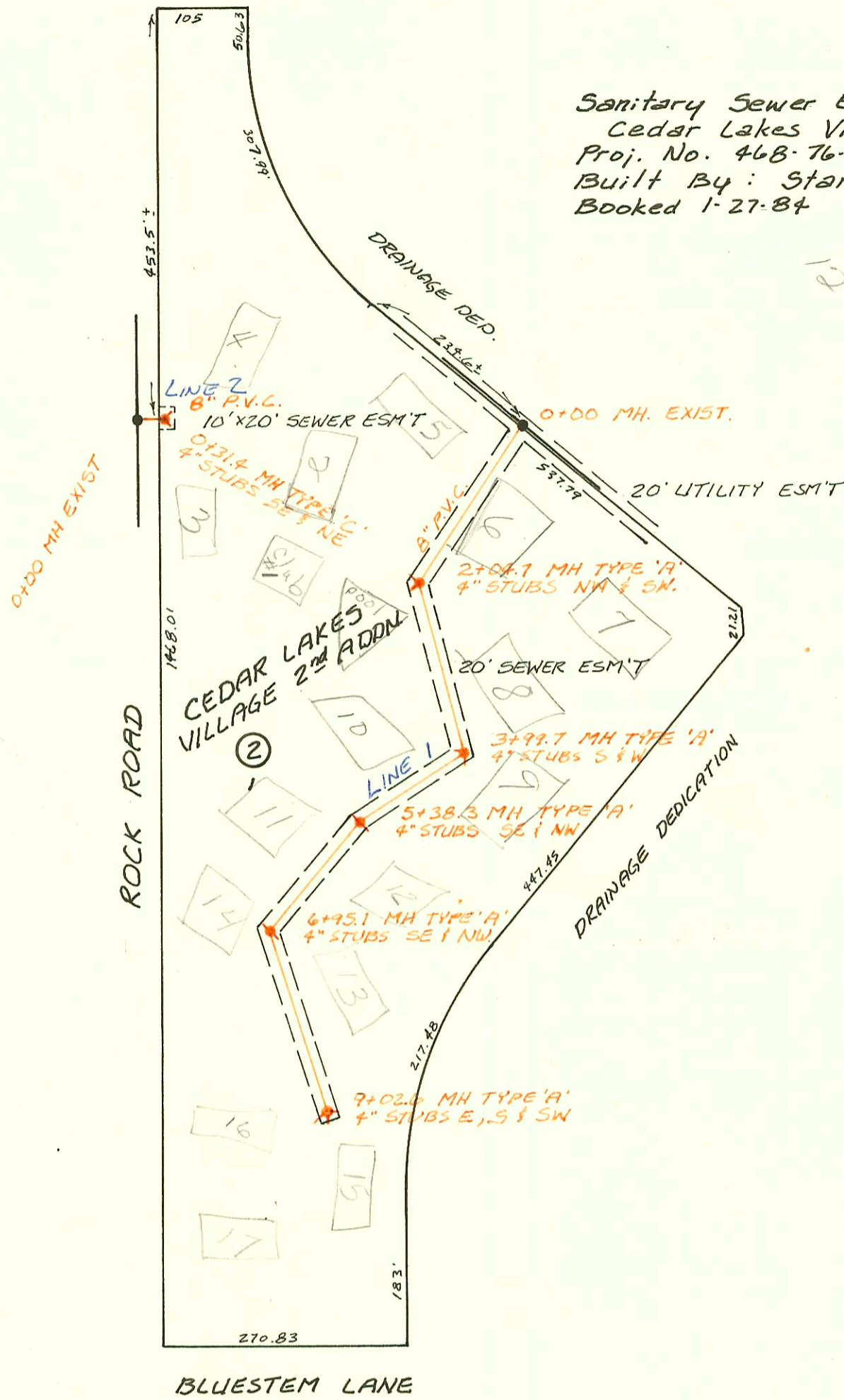
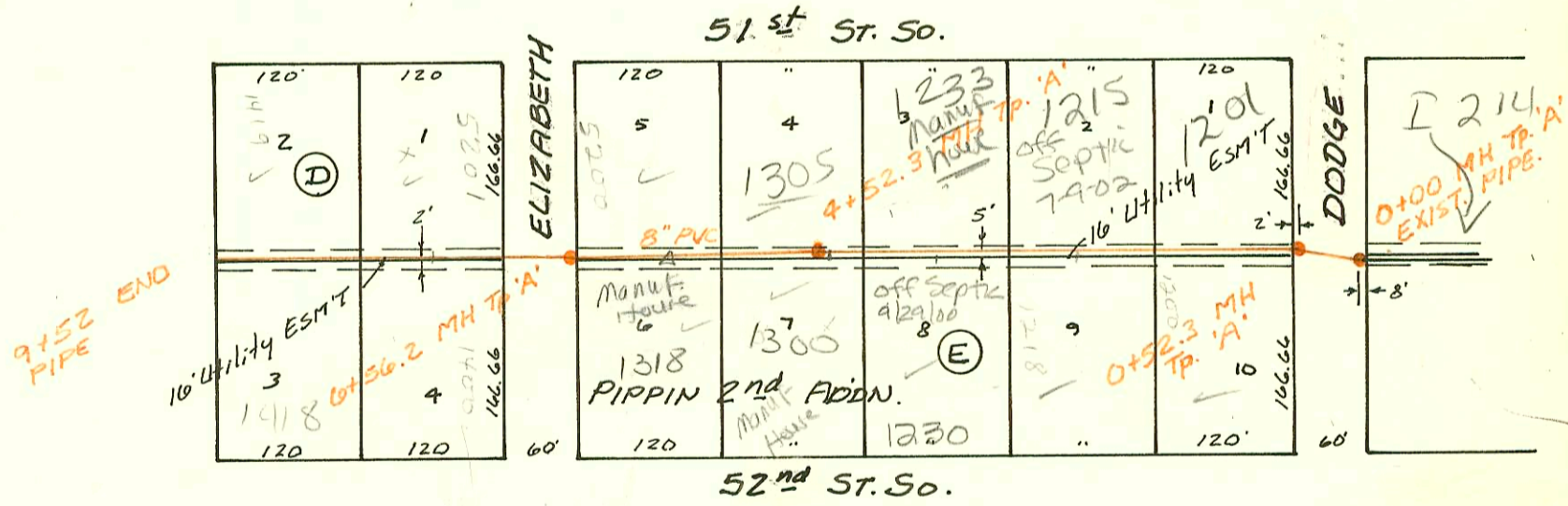
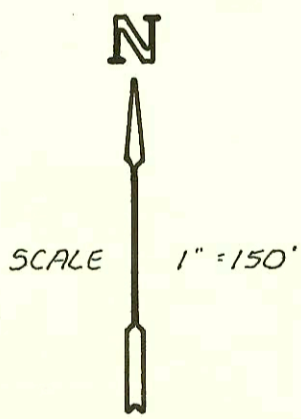


Sanitary Sewer Extension to serve Lot 1, Blk 2,
Cedar Lakes Village 2nd Addn.
Proj. No. 468-76-245-80000-000-000-008
Built By: Stannard Const.
Booked 1-27-84 From DCD-250



LAT 40, MAIN 3, SW. INTERCEPTOR
PJ. # 468-76-245-81303-000-000-001
BUILT BY: MID-STATES CONST.
BOOKED 2-2-84 FROM DRH-11



Plot

