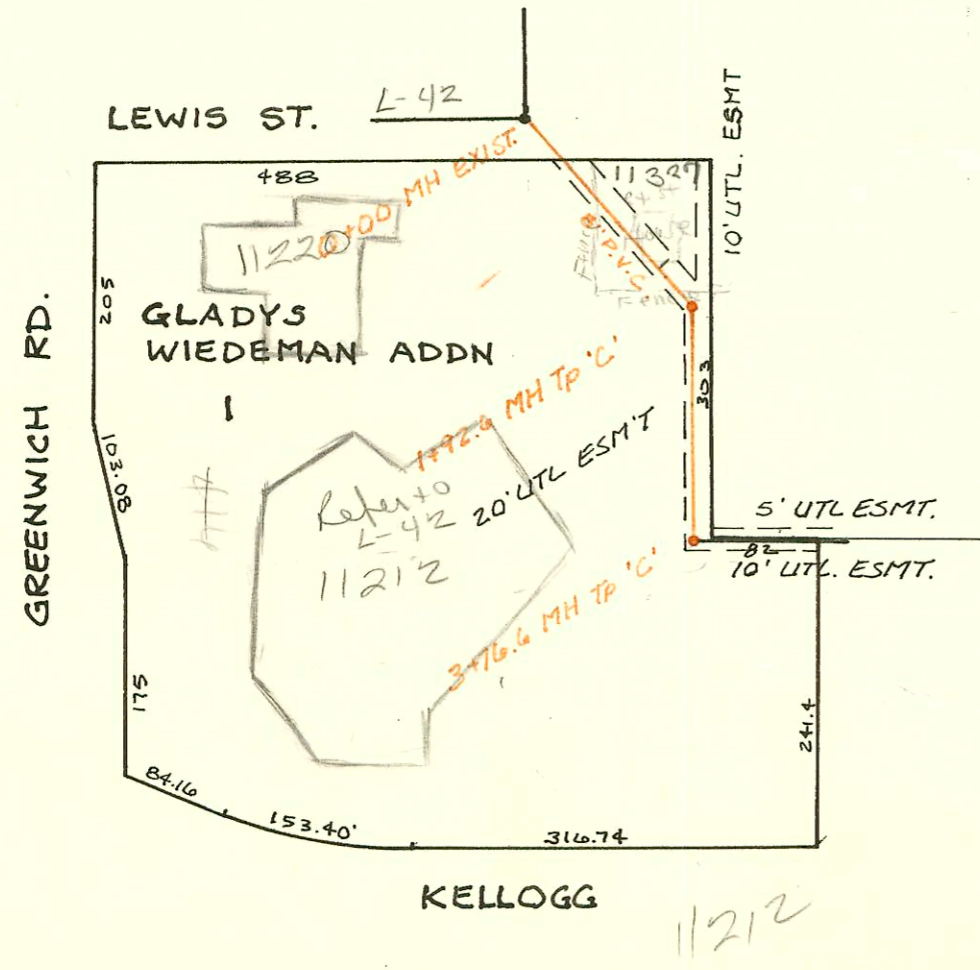
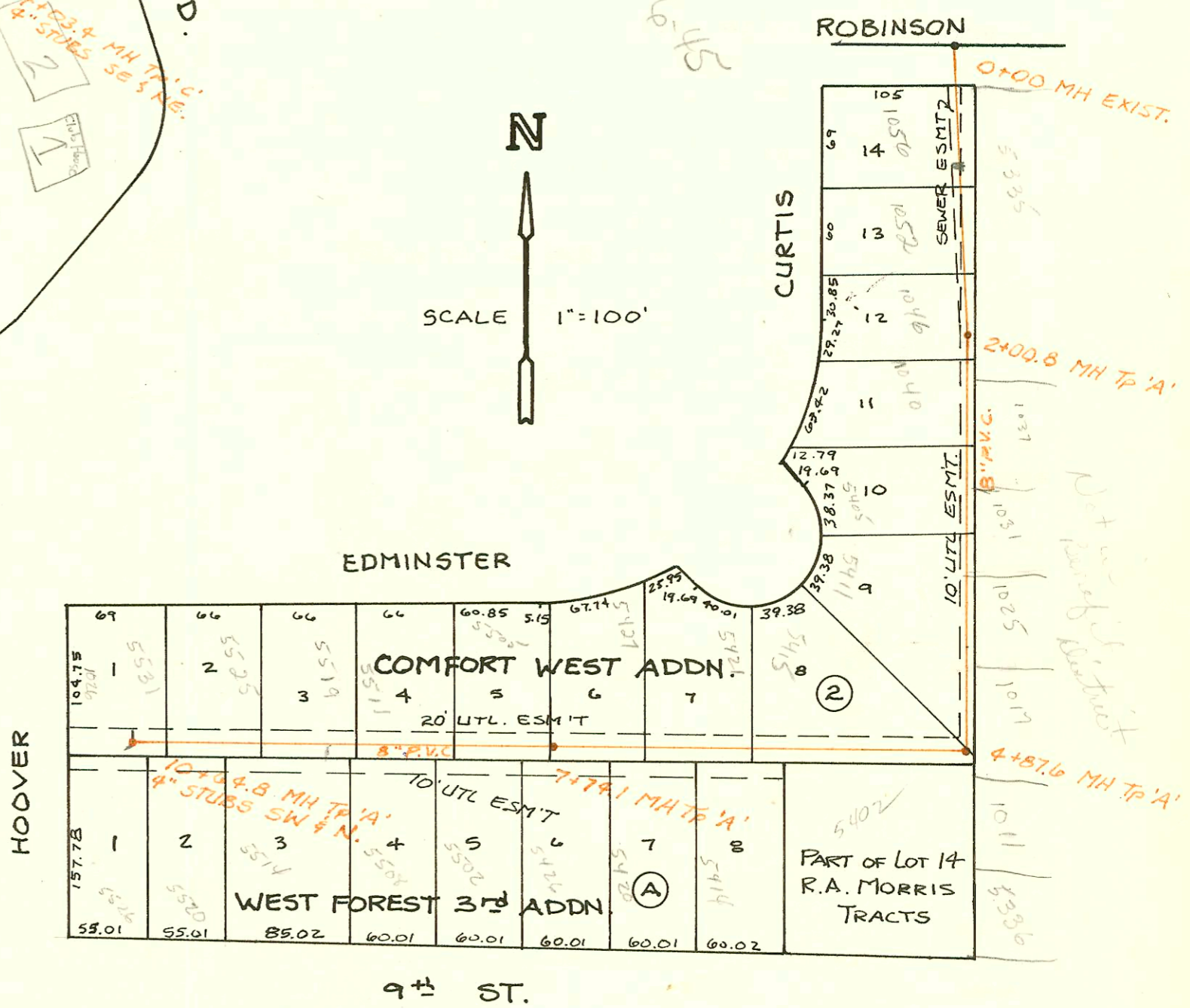


LAT 240, MAIN 5, SS # 22
 P.J. # 468-76-245-81328-000-000-001
 BUILT BY MID. STATES
 BOOKED 4-2-84 FROM JPC X1

MP



CONSTRUCTION RECORD							SERVICE RECORD					
STATION	ELEVATION		Depth	MANHOLE	4-INCH "Y" BRANCHES		No. of Permit		House Number		DATE OF PERMITS	
	Ground	Grade			North West	South East	North West	South East	North West	South East	North West	South East
Priv. S.S. EXT. RAINTREE APTS, Lot 3, Blk 1, Silver Springs												
LINE 1	0+00	126.6	115.75	10.8	0+00 EXIST							
		126.6	116.13	10.5	0+94.5	MH stub OK		9538		777 8		10-27-83
	1+00											
	2+00	127.0	116.55	10.4								
	3+00	127.2	116.95	10.2								
		127.35	117.05	10.3	3+27.5	20"x8" STUB W 6" STUB NE 6" STUB E		9539		777 9		10-27-83
	4+00	127.3	117.35	9.9				11342		997 #20		7-5-84
	5+00	127.2	117.75	9.4		5+06.7						
		127.10	118.01	9.1	5+66.7			9545		777 18		10-27-83
	6+00	127.0	118.15	8.8								
	7+00	126.8	118.55	8.2		7+08.7		11343		997 #21		7-5-84
								9546		777 19		10-27-83
	8+00	126.7	118.95	7.7								
		126.6	119.27	7.3	8+74.0	4" STUB NE 4" STUB SE		9548 9547		777 21 777 20		10-27-83 10-27-83
LINE 2	0+00	126.6	115.75	10.8	0+00 0+00 L-1							
		126.85	115.94	11.0	0+48.4	4" STUB SSE		9513 9514		777 6+7		10-26-83 10-26-83
	1+00	126.1	116.15	9.9								
	2+00	126.1	116.55	9.5				9534		777 5+7		10-27-83
	3+00	126.1	116.95	9.1								
	4+00							4536 4512		777 3-4		10-27-83 10-26-83
		126.69	117.36	9.3	4+03.4	4" STUB NE 4" STUB SE		4515 4535 4516 4511		777 12-13 777 12		10-26-83 10-27-83 10-26-83 10-26-83
LINE 3	0+00	127.35	117.15	10.2	0+00 3+27.5 L-1			9540		777 10		10-27-83
	1+00	125.8	117.55	8.2								
		126.70	117.93	8.8	1+95.0	4" STUB NE 4" STUB SE		9544 9543 9542		777 16 777 11-19		10-27-83 10-27-83 10-27-83
						4" STUB E		9537		777 15		10-27-83
LAT 24	0, MAIN S, S.S. # 22											
	0+00	128.94	119.14	9.8	0+00 EXIST.			97096 11235		1056 N see below		10-20-84 6-20-84
	1+00	129.2	119.37	9.8				11236		1052		6-20-84
								11707		7846		2-7-84
	2+00		119.61									
		129.08	119.61	9.5	2+00.8			11706		1040		2-7-84
	3+00	127.6	119.79	7.8				12445		5405		11-2-84
								12446		5411		11-2-84
	4+00	125.8	119.97	5.8								
		127.35	120.13 OUT 120.21 IN	7.3	4+87.6							
	5+00	126.0	120.24	5.8								
						5+66.10		10674	10747	5415 5402		12-7-84 4-19-84
	6+00	125.5	120.45	5.0				10478		5414		3-15-84
						6+78.6		11202	10479	5421 5420		6-14-84 3-15-84
	7+00	125.5	120.66	4.8								
		126.97	120.82	6.2	7+74.1			11201	10480	5427 5426		6-14-84 3-15-84
	8+00	125.2	120.89	4.3				10987	10481	5505 5502		5-22-84 3-15-84
						8+62.1		10872	10488	5511 5508		5-8-84 3-16-84
	9+00	127.9	121.18	6.7					10489	5514		3-16-84
						9+52.8		10873		5519		5-8-84
	10+00	127.3	121.46	5.8				10874	93-1629	5520		5-8-84 1-27-93
		126.46	121.65	4.8	10+64.8	4" STUB N 4" STUB SW		10875	93-1629	5521 5520		5-8-84 1-27-93
PRV. S.S. RELOC. Lot 1, GLADYS WEIDEMAN ADDN.												
	0+00	173.42	163.16	10.2	0+00 EXIST.			24922		11220		3-12-90
	1+00	176.0	163.46	12.5					98923	7		6-2-88
		177.56	163.73	13.9	1+92.6							
	2+00											
	3+00	177.4	164.30	13.1								
		175.14	164.70	10.4	3+76.6	MH+AP		25139		11212		4-13-90
1999-00960-10/30/99-1056 N Curtis-ABBA RESOURCES- 4" SCH 40 1-4" Comb, 17WINCO, Tied to Bid SWR 15' behind house 7' S of Garage												