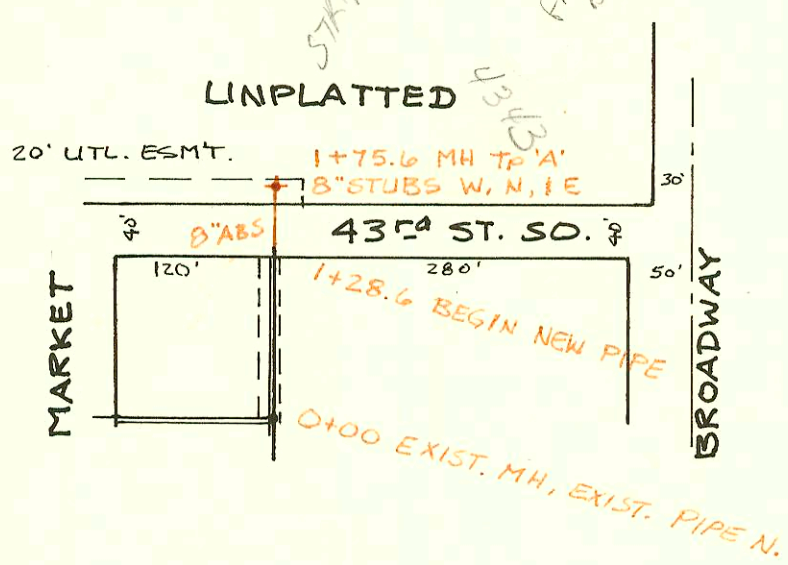
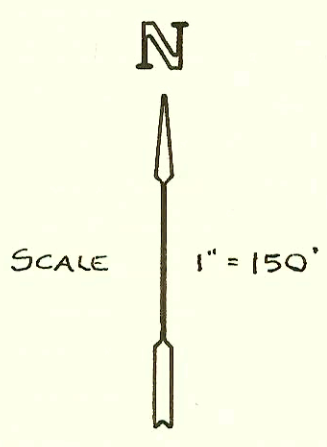
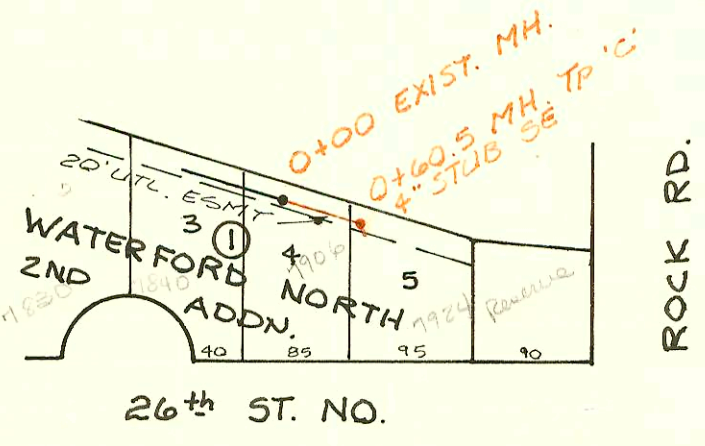
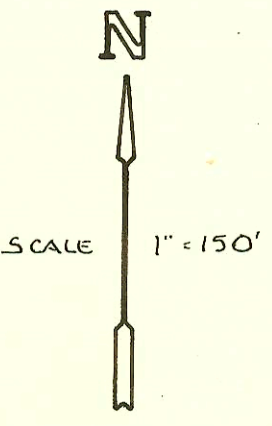


PRIV. S.S. TO SERVE LAKEVIEW MOBILE HOME PARK 2<sup>nd</sup> ADDN.  
 P.L. # 468-76-245-80000-000-000-008  
 BUILT BY HARDISON DITCHING  
 BOOKED 4-2-84 FROM DCD-203



PRIV. S.S. TO SERVE UNPLATTED PROPERTY AT NW COR. BROADWAY & 43<sup>rd</sup> SO.  
 P.L. # 468-76-245-80000-000-000-008  
 BUILT BY: W.B. CARTER  
 BOOKED 4-3-84 FROM DCD-203



PRIV. S.S. EXT. FOR LOT 5, BLK 1 WATERFORD NORTH 2<sup>nd</sup> ADDN.  
 PROJ. NO. 468-76-245-80000-000-000-008  
 BUILT BY UTILITY CONT.  
 BOOKED 4-30-84 FROM PLAN & INSP. CDS.

12-32

CONSTRUCTION RECORD							SERVICE RECORD					
STATION	ELEVATION		Depth	MANHOLE	4-INCH "Y" BRANCHES		No. of Permit		House Number		DATE OF PERMITS	
	Ground	Grade			North West	South East	North West	South East	North West	South East	North West	South East
PRIV. S. S. to SERVE LAKEVIEW MOBILE HOME PARK 2ND												
LINE I	0+00	84.86	77.51	7.4	0+00 EXIST.							
		84.83	77.49	7.3	0+50.6 EXIST.							
	1+00					1+43.4		6767		1001 E. #30 misc. Utility		10-13-82
		85.6	76.85	8.7	1+98.4 EXIST.							
LINE 1A	0+00	84.04	78.62	5.4	0+00 EXIST.							
	1+00	84.4	78.85	5.5		1+07.8		6724		1001 E. #25 misc. Utility		10-13-82
						1+61.8		6725		" #226		10-13-82
	2+00	84.4	79.08	5.3		2+16.8		6726		" #227		10-13-82
		84.74	79.20	5.5	2+49.8	2+75.8 4" STUB NW		6727		" #228		10-13-82
	3+00	84.4	79.38	5.0		3+36.8		6728		" #229		10-13-82
						3+95.8		6729		" #230		10-13-82
	4+00	84.6	79.75	4.8								
						4+95.8		6730		" #231		10-13-82
	5+00		80.11									
		84.60	80.12	4.5	5+02.1	4" STUB NE		6731		" #232		10-13-82
LINE 1-B	0+00	85.00	78.11	6.9	0+00 EXIST.	1+10.4		6736		1001 E. #30 misc. Utility		10-13-82
						1+65.4	0+95.4	6737	6746	" #209 misc. Utility		10-13-82
	1+00	84.9	78.50	6.4		2+14.4		6738		" #210		10-13-82
						2+79.4	1+49.4	6739	6745	" #211 " #223		10-13-82
	2+00	84.7	78.89	5.8		3+32.4		6747		" #212		10-13-82
						3+93.4	2+06.4	6748	6744	" #213 " #222		10-13-82
	3+00					4+51.4	2+65.4	6749	6743	" #214 " #221		10-13-82
		84.84	79.28	5.5	3+00.4	3+25.4 4" STUB S		6742		" #220		10-13-82
	4+00	84.7	79.72	5.0		3+83.4		6741		" #219		10-13-82
						4+42.4		6740		" #216		10-13-82
	5+00	84.6	80.18	4.4		5+10.4		6750		" #215		10-13-82
		84.91	80.36	4.5	5+41.0	4" STUB NE	4+90	6732	6733	" #216 " #217		10-13-82
	6+00	84.8	80.57	4.2								
		84.76	80.81	4.0	6+65.6	4" STUB NE	4" STUB S	6735	6734	" #234 " #233		10-13-82
LINE 1-C	0+00	84.79	78.81	6.0	0+00 EXIST.							
		85.2	79.36 OUT 79.46 IN	5.8	0+19.8	4" STUB NW	0+29.8	6760	6766	1001 E. #30 misc. Utility	" #206	10-13-82
	1+00	85.0	79.69	5.2		0+32.8	0+81.8	6759	6765	" #202 " #205		10-13-82
						0+87.8	1+59.9	6758	6764	" #203 " #204		10-13-82
	2+00	84.6	79.98	4.6		1+45.8	2+15.9	6757	6763	" #204 " #203		10-13-82
						2+11.9	2+73.9	6756	6762	" #205 " #202		10-13-82
	3+00	84.6	80.27	4.3		2+71.9	3+31.9	6755	6761	" #206 " #201		10-13-82
		84.88	80.51	4.4	3+81.9	3+29.9	4" STUB E 2-4" STUBS SE	6754	6753 6752	" #197 " #200		10-13-82
LINE 1-D	0+00	85.05	76.47	8.6	0+00	4" stub?		6777		" #237		10-13-82
	1+00											
		86.34	76.91	9.4	1+10	1+56		6769		" #238		10-13-82
		85.34	77.36	7.9	1+94.9		4" STUB SE		6775	" #239		10-13-82
	2+00	84.8	77.38	7.4								
	3+00	84.6	77.79	6.8			3+43.4		6770	" #240		10-13-82
		84.8	78.18	6.6	3+98.4		3+48.4		6771	" #241		10-13-82
	4+00											
	5+00	85.5	78.60	6.9			5+53.6		6772	" #242		10-13-82
	6+00	85.4	79.00	6.4			6+57.6		6773	" #243		10-13-82
		85.72	79.34	6.4	6+83.6	4" STUB NW	6+78.6		6774	" #244		10-13-82
LINE 2-D	0+00	85.05	76.42	8.7	0+00	0+23.0		6768		1001 E. #30 misc. Utility		10-13-82
		85.31	79.02	6.3	0+70	4" STUB W		6776		1001 E. #30 misc. Utility		10-13-82
PRIV. S.S. EXT. TO SERVE UNPLATTED PROP. @ NW COR BROADWAY & 43RD ST. SO.												
	0+00	85.1	80.09		0+00 EXIST.							
	1+00											
		86.31	80.40			1+75.6						
PRIV. S.S. EXT. Lot 5, Blk 1, WATERFORD NORTH 2ND ADDN.												
	0+00	218.9	210.44	8.5	0+00 EXIST.							
		219.0	211.65	7.3	0+60.5		4" STUB SE	1991X		11424 E 26th 100		11/4/88

9035-4343 S. Broadway - 8-22-83 Don White - La Parra for Paris.