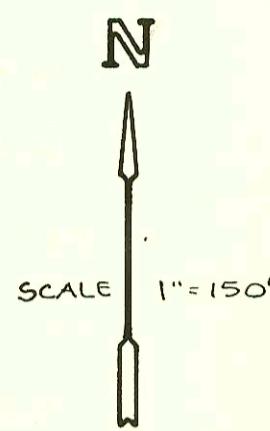
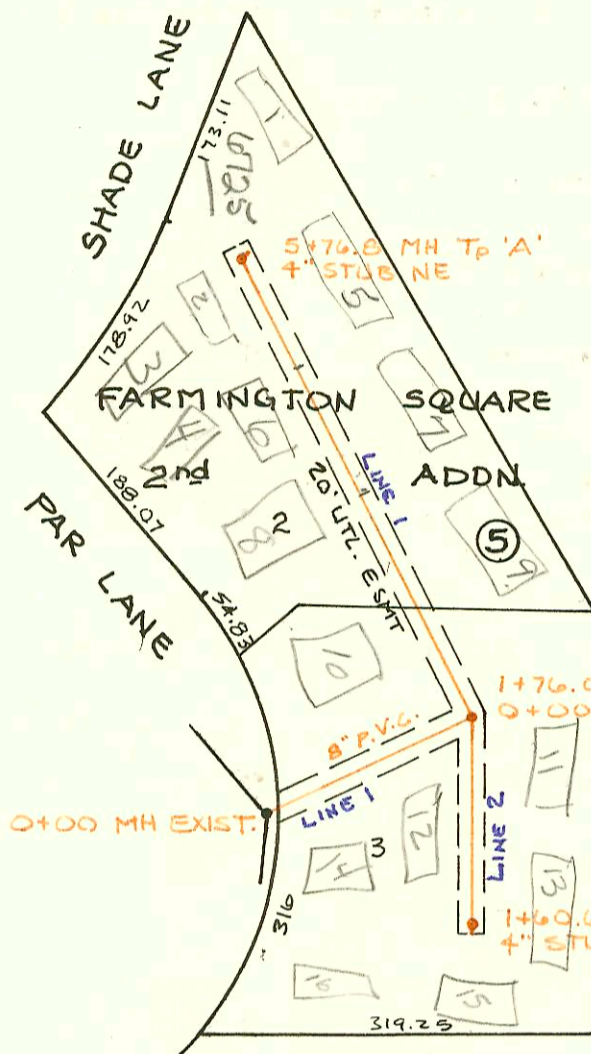


PRIV. S.S. RELOCATION, GARDINER ELEMENTARY SCHOOL
 PJ # 468-76-245-80000-000-000-008
 BUILT BY UTILITY CONTRACTORS
 BOOKED 4-4-84 FROM DCD-203

MP

9-6-84

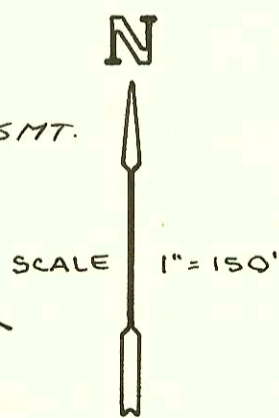
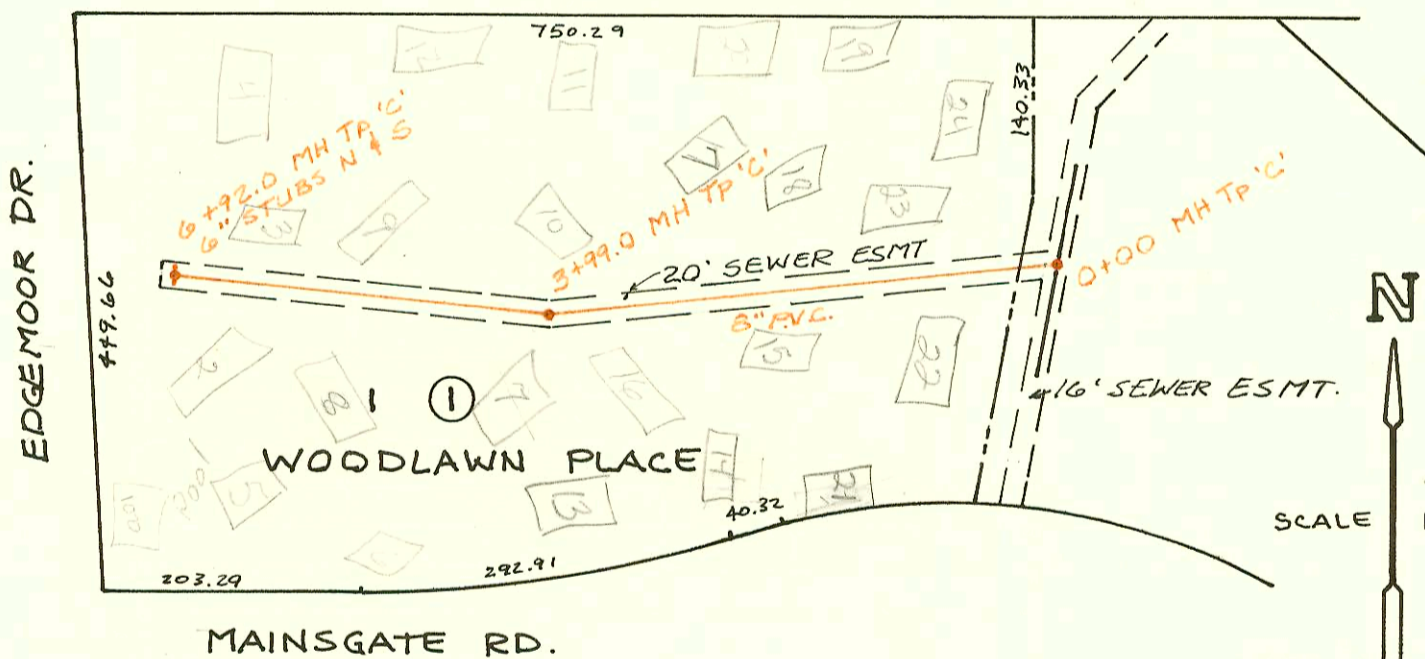


PRIV. S.S. FOR LOTS 2 & 3, BLK 5,
 FARMINGTON SQUARE 2ND ADDN.
 PJ # 468-76-245-80000-000-000-008
 BUILT BY W.B. CARTER
 BOOKED 4-4-84 FROM DCD-203

MP

6-49

5776.8
 3+68.0
 208.8



PRIV. S.S. LOT 1, BLK 1,
 WOODLAWN PLACE
 PJ # 468-76-245-80000-000-000-008
 BUILT BY MID-STATES CONST.
 BOOKED 4-5-84 FROM PLAN & INSR. CDS.

MP

11-30

| CONSTRUCTION RECORD | | | | | | SERVICE RECORD | | | | | | |
|---|-----------|---|-------|------------------|---------------------|----------------|---------------|--------------|------------------------------|-------------------------|----------------------|----------------------|
| STATION | ELEVATION | | Depth | MANHOLE | 4-INCH "Y" BRANCHES | | No. of Permit | | House Number | | DATE OF PERMITS | |
| | Ground | Grade | | | North West | South East | North West | South East | North West | South East | North West | South East |
| PRIV. S.S. RELOC., GARDINER ELEMENTRY SCHOOL | | | | | | | | | | | | |
| 0+00 | 102.67 | 92.84 | 9.9 | 0+00 | | | | | | | | |
| 1+00 | 102.0 | 92.73 | 9.3 | | | | | | | | | |
| | 101.95 | 92.67 | 9.3 | 1+48.4 | | | | | | | | |
| 2+00 | 102.1 | 92.55 | 9.5 | | | | | | | | | |
| 3+00 | 102.1 | 92.33 | 9.8 | | | | | | | | | |
| 4+00 | 102.7 | 92.10 | 10.6 | | | | | | | | | |
| 5+00 | 101.7 | 91.87 | 9.8 | | | | | | | | | |
| | 100.12 | 91.83 | 8.3 | 5+18.8 | | | | | | | | |
| PRIV. S.S. FOR LOTS 2 & 3, BLK 5, FARMINGTON SQUARE 2 ND ADDN. | | | | | | | | | | | | |
| 0+00 | 134.43 | 124.03 | 10.4 | 0+00 EXIST. | | | | | | | | |
| 1+00 | 134.5 | 124.41 | 10.1 | | | | 9711 | | 6725 14 Shade | | | 11-21-83 |
| | 133.20 | 124.70 ^{out} 124.86 ⁱⁿ | 8.5 | 1+76.0 | | | 9709 | | 6725 12 Shade | | | 11-21-83 |
| 2+00 | 134.0 | 124.95 | 9.0 | | 2+07.0 | | 8176 | | 6725 10 Shade | | 5-17-83 | |
| | | | | | | 2+51.0 | 8693 | | 6725 9 Shade | | | 7-13-83 |
| 3+00 | 134.6 | 125.33 | 9.3 | | 3+38.0 | | 8175 | | 6725 8 Shade | | 5-17-83 | |
| | | | | | | 3+62.0 | 8174 | | 6725 7 Shade | | | 5-17-83 |
| 4+00 | 135.0 | 125.71 | 9.3 | | 4+03.0 | | 7610 | | 6725 4 Shade | | 3-8-83 | |
| | | | | | 4+57.8 | 4+80.8 | 7611 7612 | | 6725 6 Shade 6725 5 Shade | | 3-8-83 | 3-8-83 |
| 5+00 | 134.2 | 126.09 | 8.1 | | 5+18.8 | | 7057 | | 6725 2 Shade | | 11-23-82 | |
| | 133.33 | 126.38 | 6.9 | 5+76.8 | | 4" STUB NE | 7055 | | 6725 1 Shade | | 11-23-82 | |
| 0+00 | 133.20 | 124.80 | 8.4 | 0+00 1+76 L-1 | | 0+08.6 | 8694 | | 6725 11 Shade | | | 7-13-83 |
| 1+00 | 133.5 | 125.25 | 8.2 | | | | | | | | | |
| | 133.90 | 125.52 | 8.4 | 1+60.6 | | 4" STUB S | 9417 | | 6725 15 Shade | | | 10-12-83 |
| PRIV. S.S. FOR LOT 1, BLK 1, WOODLAWN PLACE | | | | | | | | | | | | |
| 0+00 | 176.78 | 165.46 | 11.3 | 0+00 | | | | | | | | |
| 1+00 | 176.5 | 166.16 | 10.3 | | 0+76.0 | 0+81.0 | 9862 9863 | 9860 9861 | 5700 23-24 manipgate | 5700 21-22 manipgate | 12-12-83 12-12-83 | 12-12-83 12-12-83 |
| 2+00 | 176.6 | 166.86 | 9.7 | | | 2+29.0 | 9857 9858 | 9853 9855 | 5700 18-20 manipgate | 5700 14-16 manipgate | 12-12-83 12-12-83 | 12-12-83 12-12-83 |
| | | | | | 2+46.0 | 2+92.0 | 9856 9859 | 9852 9853 | 5700 17-19 manipgate | 5700 13-15 manipgate | 12-12-83 12-12-83 | 12-12-83 12-12-83 |
| 3+00 | 176.6 | 167.56 | 9.0 | | | | | | | | | |
| | 178.0 | 168.25 ^{out} 168.35 ⁱⁿ | 9.7 | 3+99.0 | | | | | | | | |
| 4+00 | | | | | 4+38.0 | 4+69.0 | 9851 9849 | 9847 9845 | 5700 19-22 manipgate | 5700 8-6 manipgate | 12-12-83 12-12-83 | 12-12-83 12-12-83 |
| | | | | | 4+60.0 | 4+88.0 | 9848 | 9844 | 5700 9-11 manipgate | 5700 5-7 manipgate | 12-12-83 12-12-83 | 12-12-83 12-12-83 |
| 5+00 | 177.7 | 169.06 | 8.6 | | | | | | | | | |
| 6+00 | 180.5 | 169.76 | 10.7 | | | | | | | | | |
| | 180.0 | 170.40 | 9.6 | 6+92.0 | 6+80.0 | 6+67.0 | 9842 9843 | 9841 9840 | 5700 3-4 manipgate | 5700 1-2 manipgate | 12-12-83 12-12-83 | 12-12-83 12-12-83 |