

N
SCALE 1" = 150'

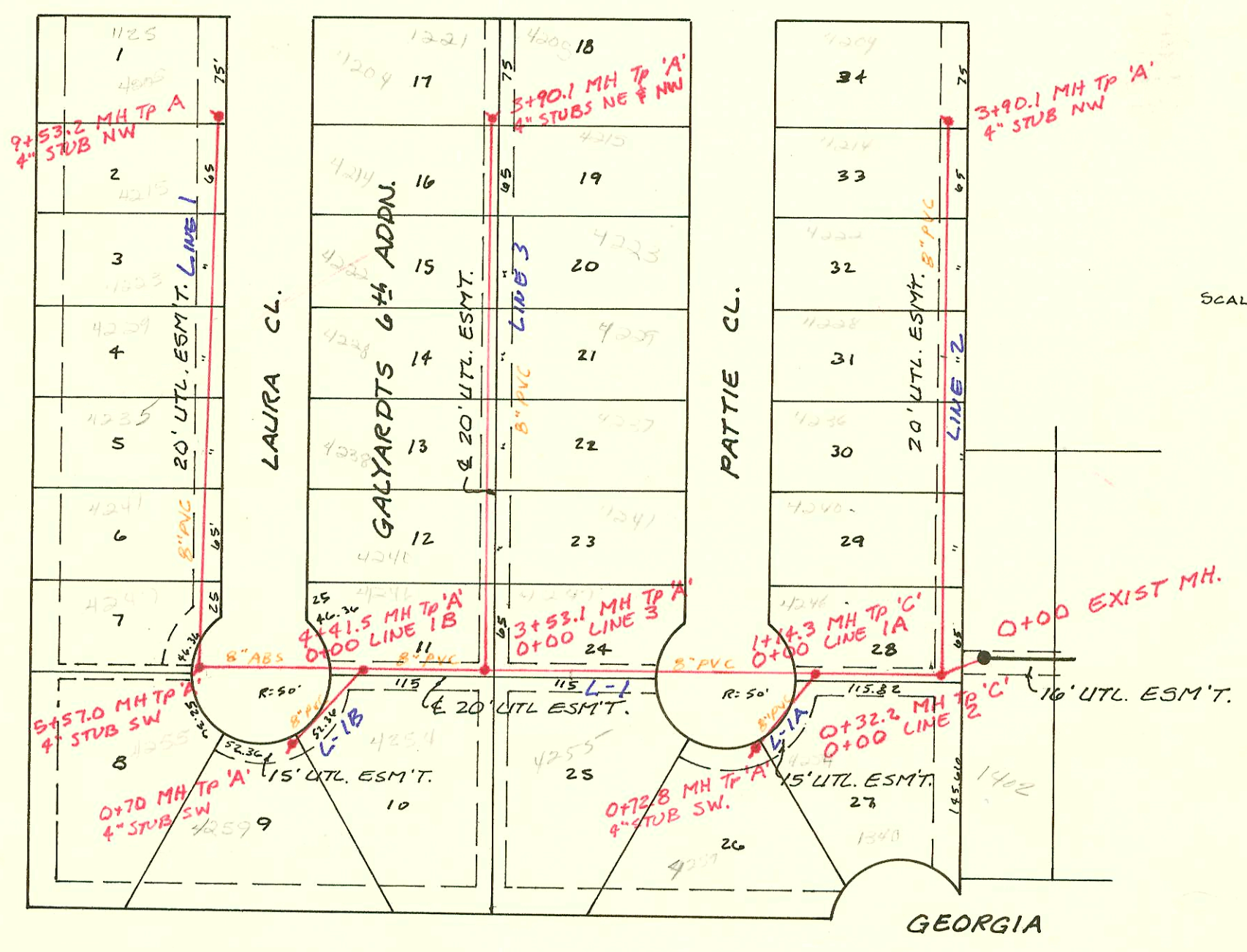
LAT 31, MAIN 7, S.S. # 23
P.I. NO. 468-76-245-81337-000-000-001
BUILT BY UTILITY CONTRACTORS
BOOKED 7-20-84 FROM MGP-28

12-28

LAT 55, MAIN 1, SW. INTERCEPTOR
P.I. # 468-76-245-80795-000-000-001
BUILT BY UTILITY CONTRACTORS INC.
BOOKED 7-24-84 FROM DRH-10

9-81

ALTA



N
SCALE 1" = 100'

GEORGIA

CONSTRUCTION RECORD							SERVICE RECORD					
STATION	ELEVATION		Depth	MANHOLE	4-INCH "Y" BRANCHES		No. of Permit		House Number		DATE OF PERMITS	
	Ground	Grade			North West	South East	North West	South East	North West	South East	North West	South East
LAT 31, LINE 1	MAIN 7, S.S. #23											
0+00	172.87	159.91	13.0	0+00 EXIST.								
	172.45	160.73	11.7	0+81.8	7th tap	DB	14580		2100	6510 #29		8-26-85
1+00	172.9	160.90	12.0									
	171.92	161.43	10.5	1+55.3		Lead	14581		2100	6510 #29		8-26-85
2+00	172.8	161.82	11.0									
3+00	173.3	162.68	10.6									
	173.25	162.91	10.3	3+27.0								
	173.60	163.30	10.3	3+74.2								
4+00	174.0	163.52	10.5			4+02.2 tap		11200	6510 #29			6-14-84
5+00	175.2	164.39	10.8			5+26.3 tap		11198	6510 #29	6510 #29		6-14-85
	175.18	165.22	10.0	5+94.8	8" STUB NW		11884		6510 #29	6510 #29		8-28-84
LINE 2	0+00	173.60	163.30	10.3	3+74.2 L-1				6510 #29			6-14-84
	174.97	163.77	11.2	0+86.4	4+61.5 tap		11195		6510 #29			6-14-84
1+00	174.0	163.84	10.2		1+24.5 tap		11196		6510 #29			6-14-84
						1+52.2 tap		11197	6510 #29			6-14-84
2+00	175.1	164.39	10.7									
	175.02	164.53	10.5	2+26.5	8" STUB N.							
LAT 55, LINE 1	MAIN 1, SW INTERCEPTOR											
0+00	84.81	78.62	6.2	0+00 EXIST.								
	88.05	78.95	9.1	0+32.2		0+56.0 tap		16043		4254		4-1-86
1+00	88.05	79.24	8.0									
	88.02	79.30	8.7	1+14.3	0+00 L-1A							
2+00	86.4	79.58	6.8									
						2+72.1 tap		12259		4255		10-17-84
3+00	86.1	79.90	6.2									
	86.89	80.07	6.8	3+53.1	0+00 L-3							
4+00	85.7	80.25	5.4									
	87.01	80.41	6.6	4+41.5	0+00 L-1B							
5+00	85.6	80.64	5.0									
	86.53	80.86	5.7	5+57.0	4" STUB SW		14641		4233			9-4-85
6+00	85.8	81.01	4.8			6+21.0 tap	16040		4247			4-1-86
						6+37.6 tap	14941		4235			10-22-85
7+00	85.8	81.36	4.4			4" SDR 35	15064		4235			11-19-85
						7+43.0 tap	16044		4237			4-1-86
8+00	86.0	81.71	4.3			8+10.1 tap	15349		4235			1-29-86
						8+24.2 tap			4235			
9+00	86.9	82.06	4.8			9+38.1 tap	13550		4215			1-29-86
	86.24	82.25	4.0	9+53.2	4" STUB NW		14640		4203			9-4-85
LINE 1A	0+00	88.02	79.40	8.6	0+00	1+14.3 L-1			4259			1-27-86
	87.91	79.75	8.2	0+72.8	4" STUB SW		15523		4259			
LINE 1B	0+00	87.01	80.51	6.5	0+00	4+41.5 L-1						
	86.62	80.58	6.0	0+70	4" STUB SW							
LINE 2	0+00	88.05	79.05	9.0	0+00	0+32.2 L-1	0+36 tap	13520	4240			4-12-85
						0+84.0		13005	4240			1-28-85
1+00	87.8	79.49	8.3						4236			4-18-85
						1+68 tap		13518	4228			4-12-85
2+00	88.1	79.94	8.2			2+12.1 tap		13450	4228			4-12-85
						2+19.1 tap		13449	4228			4-12-85
3+00	88.3	80.38	7.9						4209			7-10-84
	87.58	80.78	6.8	3+90.1	4" STUB NW		11396		4240			11-19-85
LINE 3	0+00	86.89	80.17	6.7	0+00	3+53.1 L-1	0+30.5 tap	15066	16042	4247		4-1-86
							0+81.0 tap	14945	13991	4240		10-31-85
1+00	85.8	80.49	5.3						4237			1-25-85
						1+55.0 tap	14946	13519	4237			4-18-85
2+00	85.9	80.80	5.1					11395	4229			7-10-84
						2+32.1 tap		13956	4229			6-6-85
						2+90.1 tap		11394	4229			7-10-84
3+00	86.2	81.12	5.1			3+52.1 tap	13955	11393	4204			6-6-85
	86.40	81.40		3+90.1	4" STUB NW	4" STUB NE	15407	12990	4209	4205		1-6-86
									4205			1-26-85
	16045 - 4241 - 4-1-86 (6+81.0)											

#12910
area of
200.00
8-26-85

Temp
Coun