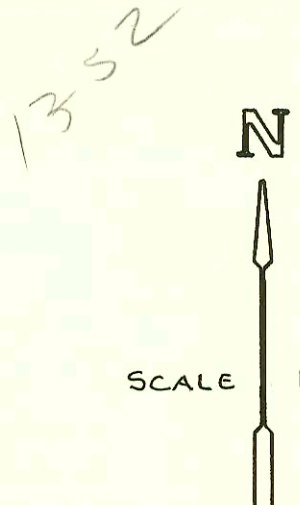


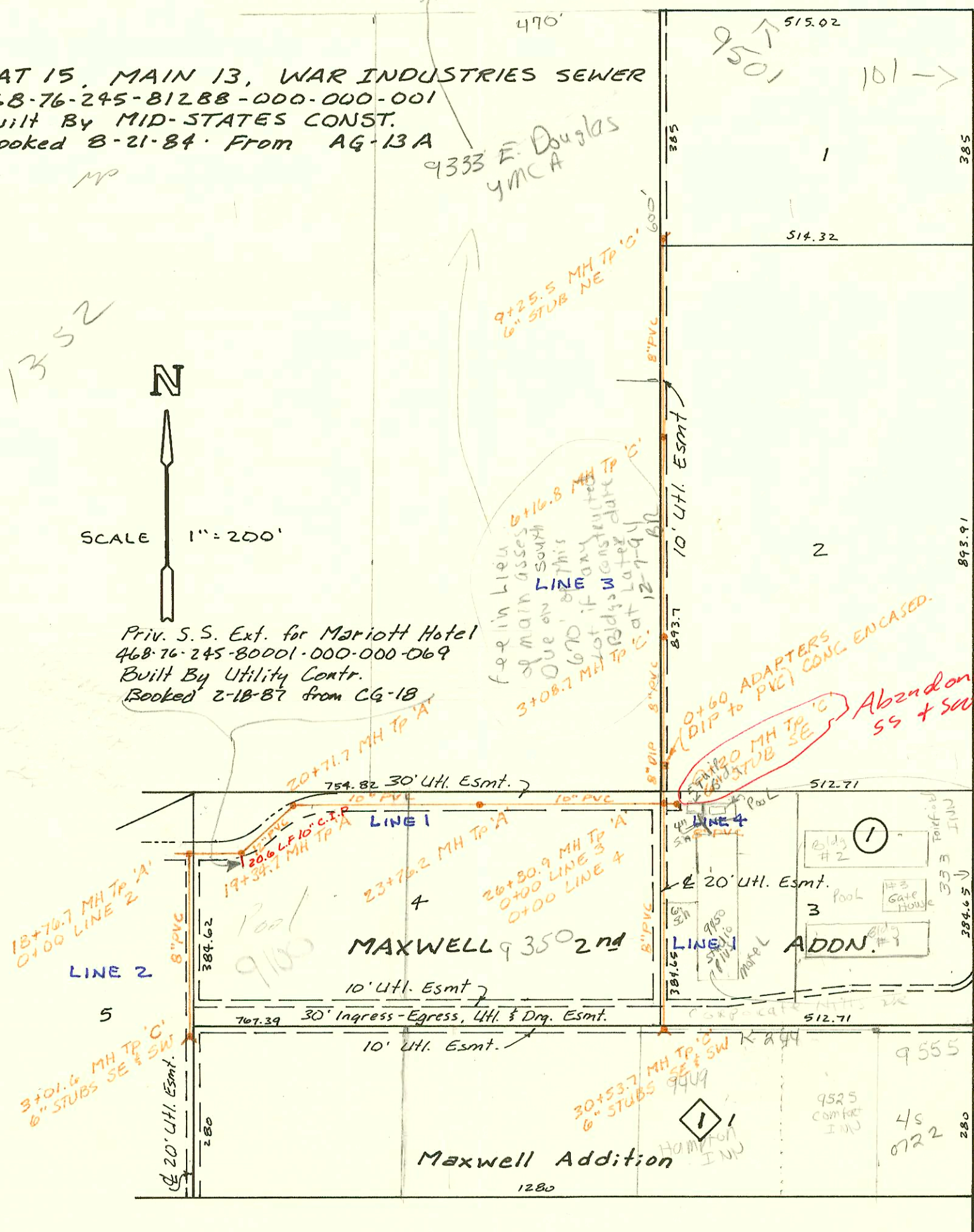
LAT 15, MAIN 13, WAR INDUSTRIES SEWER
468-76-245-81288-000-000-001
Built By MID-STATES CONST.
Booked 8-21-84 From AG-13A

note: ymca paid
fee in lieu of main
assets on area of
470x600 (only) amt to
8,460 on 12-7-94.
IF south portion with
20' developed with
bid 4 then a fee
in lieu of main that
will be due on that
portion. NO fee in
lieu of lat. sewer
due. Refer to B-261
due 12-7-94
OK

DOUGLAS



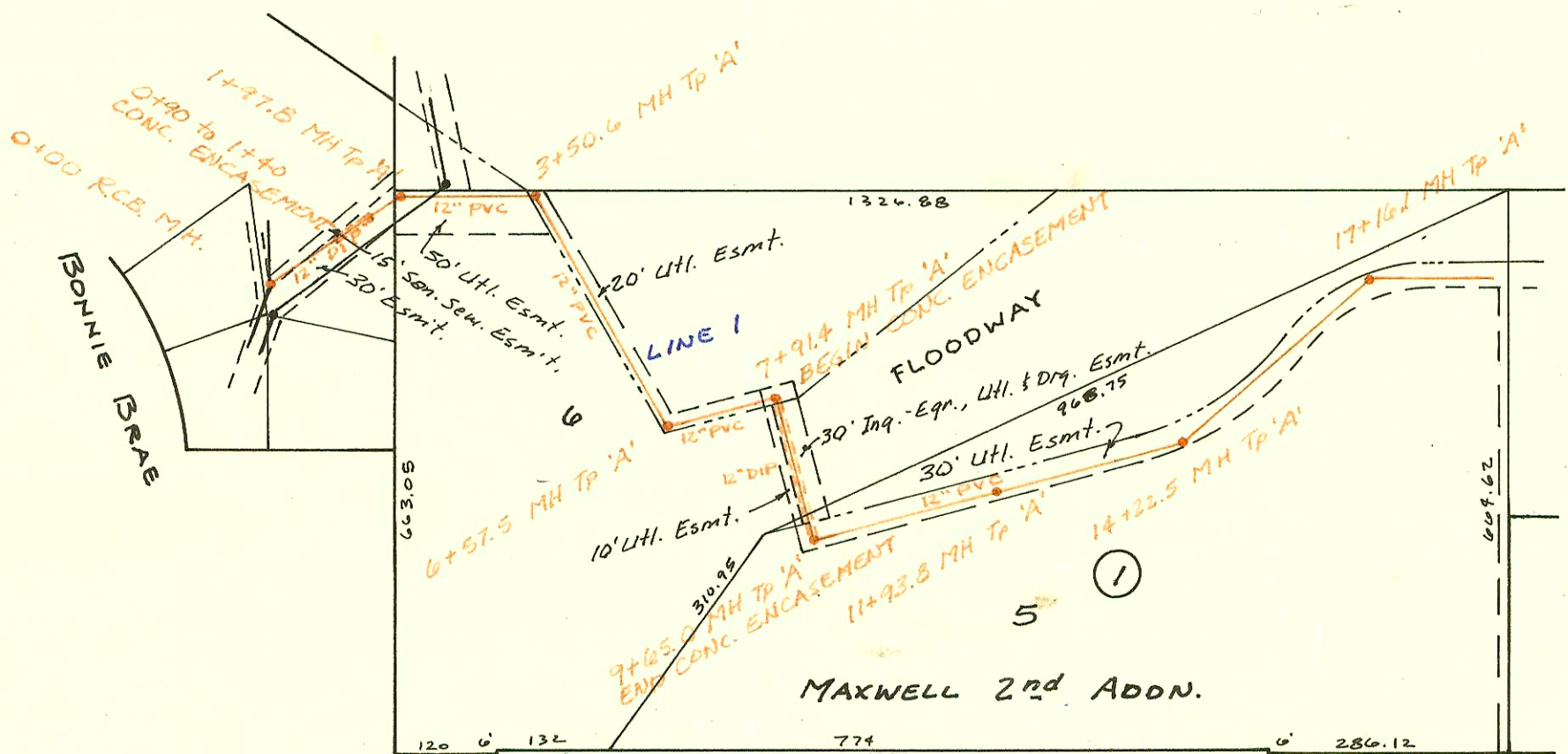
Priv. S.S. Ext. for Marriott Hotel
468-76-245-80001-000-000-069
Built By Utility Contr.
Booked 2-18-87 from CG-18



WEBB ROAD

Abandoned
MOD. FOR Pzt Lot 3
Blk 1 Maxwell 2nd Addn
8/4/04 rpl

Line 4 to be
abandoned - plug at
0+00
9/1/97
OK



LAT 15,
LINE 1

LINE 2

CONSTRUCTION RECORD						SERVICE RECORD						
STATION	ELEVATION		Depth	MANHOLE	4-INCH "Y" BRANCHES		No. of Permit		House Number		DATE OF PERMITS	
	Ground	Grade			North West	South East	North West	South East	North West	South East	North West	South East
MAIN 13, WIS.												
0+00	145.74	131.31	14.4	0+00								
1+00	137.5	131.58	5.9									
	140.78	131.85 IN 133.67 OUT	9.1	1+97.8								
2+00												
3+00	147.2	133.84	13.4									
	146.68	133.73 OUT 134.23 IN	12.8	3+50.6								
4+00	146.5	134.32	12.2									
5+00	146.0	134.49	11.5									
6+00	146.4	134.66	11.7									
	146.78	134.76 OUT 135.04 IN	12.0	6+57.5								
7+00	147.2	135.14	12.1									
	149.05	135.34 OUT 135.64 IN	13.8	7+91.4								
8+00												
9+00	149.4	136.34	13.1									
	150.01	136.76 OUT 136.95 IN	13.2	9+65.0								
10+00	150.7	137.20	13.5									
11+00	151.1	137.91	13.2									
	150.87	138.57	12.3	11+93.8								
12+00												
13+00	152.6	139.29	13.3									
14+00	154.0	139.97	14.0									
	153.66	140.12	13.4	14+22.5								
15+00	148.3	140.80	7.6									
16+00	150.4	141.46	9.9									
17+00	152.0	142.21	9.8									
	152.83	142.33	10.5	17+16.1								
18+00	154.4	142.87	11.5									
	153.77	143.37	10.4	18+76.7			16372		9100	Corporate H		5-30-86
19+00	153.0	143.53	9.5									
	153.23	143.78	9.4	19+34.7			16373		9100	Corporate H		5-30-86
20+00	152.0	144.26	7.7									
	153.73	144.78	8.9	20+71.7			16381		9100	Corporate H		5-30-86
21+00	154.9	144.96	9.9									
22+00	155.0	145.58	9.4									
23+00	156.9	146.21	10.7									
	160.94	146.69	14.2	23+76.2								
24+00	161.9	146.82	15.1									
25+00	163.0	147.39	15.6									
26+00	162.6	147.95	14.6									
	161.34	148.41 OUT 148.69 IN	12.9	26+80.9								
27+00	161.1	148.84	12.3									
							97-16615-7		9450	Corporate H		9-24-97
28+00	162.5	149.63	12.9				97-15411-7		9450	Corporate H		9-9-97
29+00	164.3	150.42	13.9									
30+00	165.7	151.22	14.5									
	166.74	151.64 OUT 152.38 IN	15.1	30+53.7								
0+00	153.77	143.68	10.1	18+76.7 L-1								
1+00	158.1	144.66	13.4									
2+00	160.3	145.64	14.7									
3+00		146.61										
	161.96	146.63	15.4	3+01.6								

CONT. ON SHEET I-284