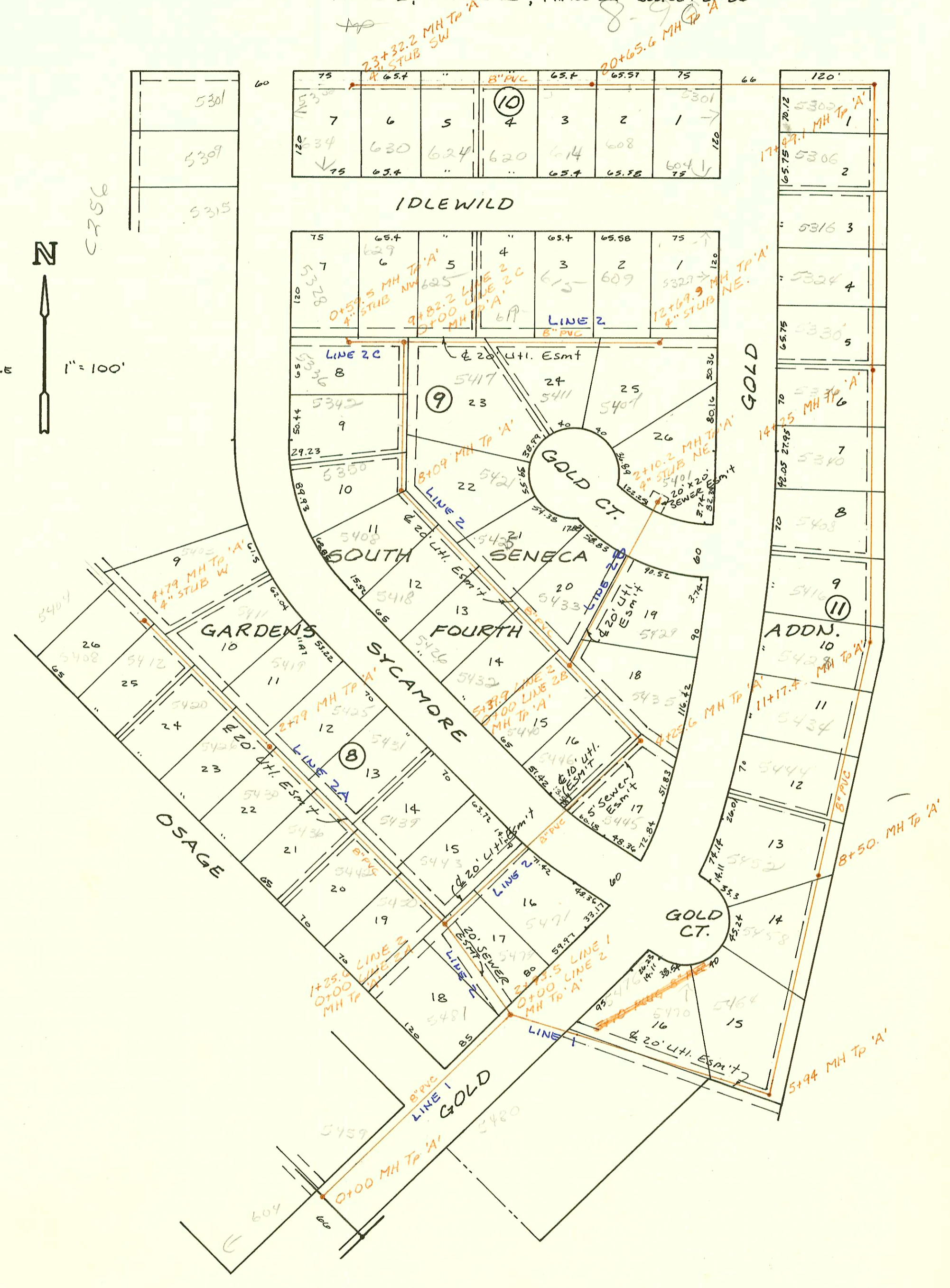
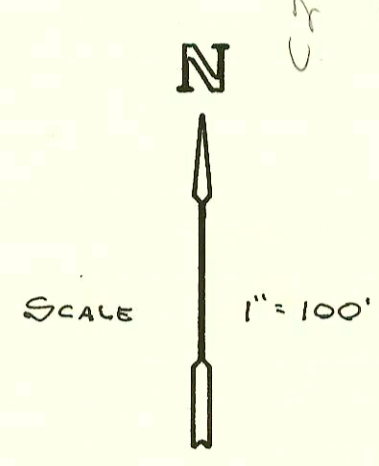


S.S. Extensions to Blk 8, 9, 10 & 11
South Seneca Gardens 4th Addn
468-76-245-80000-000-000-008
Built By W.B. Carter Const.
Booked 9-6-84 FROM PLAN

PHASE I, PHASE II, PHASE III - Booked 1-27-86



75	65.4	65.4	65.4	65.57	75
7	6	5	4	3	2
634	630	624	620	614	608
63.4				63.4	63.58

75	65.4	65.4	65.4	65.58	75
7	6	5	4	3	2
5328	625	625	615	609	5327
5336					

5336	8	23	24	25	26
5342	9	22	23	24	25
5350	10	21	22	23	24
5408	11	20	21	22	23

5408	12	13	14	15	16
5412	11	12	13	14	15
5418	10	11	12	13	14
5426	9	10	11	12	13

5426	13	14	15	16	17
5432	12	13	14	15	16
5438	11	12	13	14	15
5446	10	11	12	13	14

5446	17	18	19	20	21
5452	16	17	18	19	20
5458	15	16	17	18	19
5464	14	15	16	17	18

5464	15	16	17	18	19
5470	14	15	16	17	18
5476	13	14	15	16	17
5482	12	13	14	15	16

5482	19	20	21	22	23
5488	18	19	20	21	22
5494	17	18	19	20	21
5500	16	17	18	19	20

S.S. Extensions to Blk 8, 9, 10 & 11 South Seneca Gardens 4th

CONSTRUCTION RECORD							SERVICE RECORD					
STATION	ELEVATION		Depth	MANHOLE	4-INCH "Y" BRANCHES		No. of Permit		House Number		DATE OF PERMITS	
	Ground	Grade			North West	South East	North West	South East	North West	South East	North West	South East
LINE 2 0+00	81.6	75.65	6.0	0+00 2+93.5 L-1								
1+00	81.9	75.95	6.0									
2+00	81.9	76.03 76.13	5.9	0+25.6 0+00 L-2A								
3+00	82.0	76.35	5.7									
4+00	82.6	76.65	5.0									
5+00	82.0	76.95	5.1									
6+00	82.1	77.03 77.13	5.1	4+25.6								
7+00	82.2	77.35	4.9									
8+00	82.5	77.47	5.0	5+39.9 0+00 L-2B								
9+00	82.6	77.65	5.0									
10+00	82.6	77.65	5.0									
11+00	83.1	77.95	5.2									
12+00	83.6	78.28	5.3	8+09								
LINE 2A 0+00	81.9	76.13	5.8	0+00 1+25.6 L-2								
1+00	81.9	76.43	5.5									
2+00	81.8	76.73	5.1									
3+00	81.8	76.97	4.8	2+79								
4+00	82.2	77.33	4.9									
5+00	82.4	77.57	4.8	4+79								
6+00	82.5	78.00	4.5	0+00 5+39.9 L-2								
7+00	82.8	78.30	4.5									
8+00	82.9	78.61	4.3	2+10.2								
9+00	84.5	78.90	5.9	0+00 9+82.2 L-2								
10+00	84.3	79.08	5.2	0+59.5								
LINE 2B 0+00	81.8	73.25	8.6	0+00								
1+00	81.2	73.45	7.8									
2+00	81.0	73.65	7.4									
3+00	81.6	73.84 73.94	7.8	2+93.5 0+00 L-2								
4+00	81.6	74.09	8.5									
5+00	81.6	74.15	7.5									
6+00	81.5	74.35	7.2									
7+00	83.2	74.54 OUT 74.67 IN	8.7	5+94								
8+00	81.6	74.85	7.5									
9+00	82.3	74.85	7.5									
10+00	82.0	75.05	7.0									
11+00	82.2	75.15	7.1	8+50								
12+00	81.8	75.25	6.6									
LINE 2C 0+00	81.6	75.45	6.2									
1+00	82.5	75.65	6.9									
2+00	82.9	75.68	7.2	11+17.4								
3+00	83.5	75.85	7.7									
LINE 1 0+00	81.8	73.25	8.6	0+00								
1+00	81.2	73.45	7.8									
2+00	81.0	73.65	7.4									
3+00	81.6	73.84 73.94	7.8	2+93.5 0+00 L-2								
4+00	81.6	74.09	8.5									
5+00	81.6	74.15	7.5									
6+00	81.5	74.35	7.2									
7+00	83.2	74.54 OUT 74.67 IN	8.7	5+94								
8+00	81.6	74.85	7.5									
9+00	82.3	74.85	7.5									
10+00	82.0	75.05	7.0									
11+00	82.2	75.15	7.1	8+50								
12+00	81.8	75.25	6.6									
(Cont I-287)												