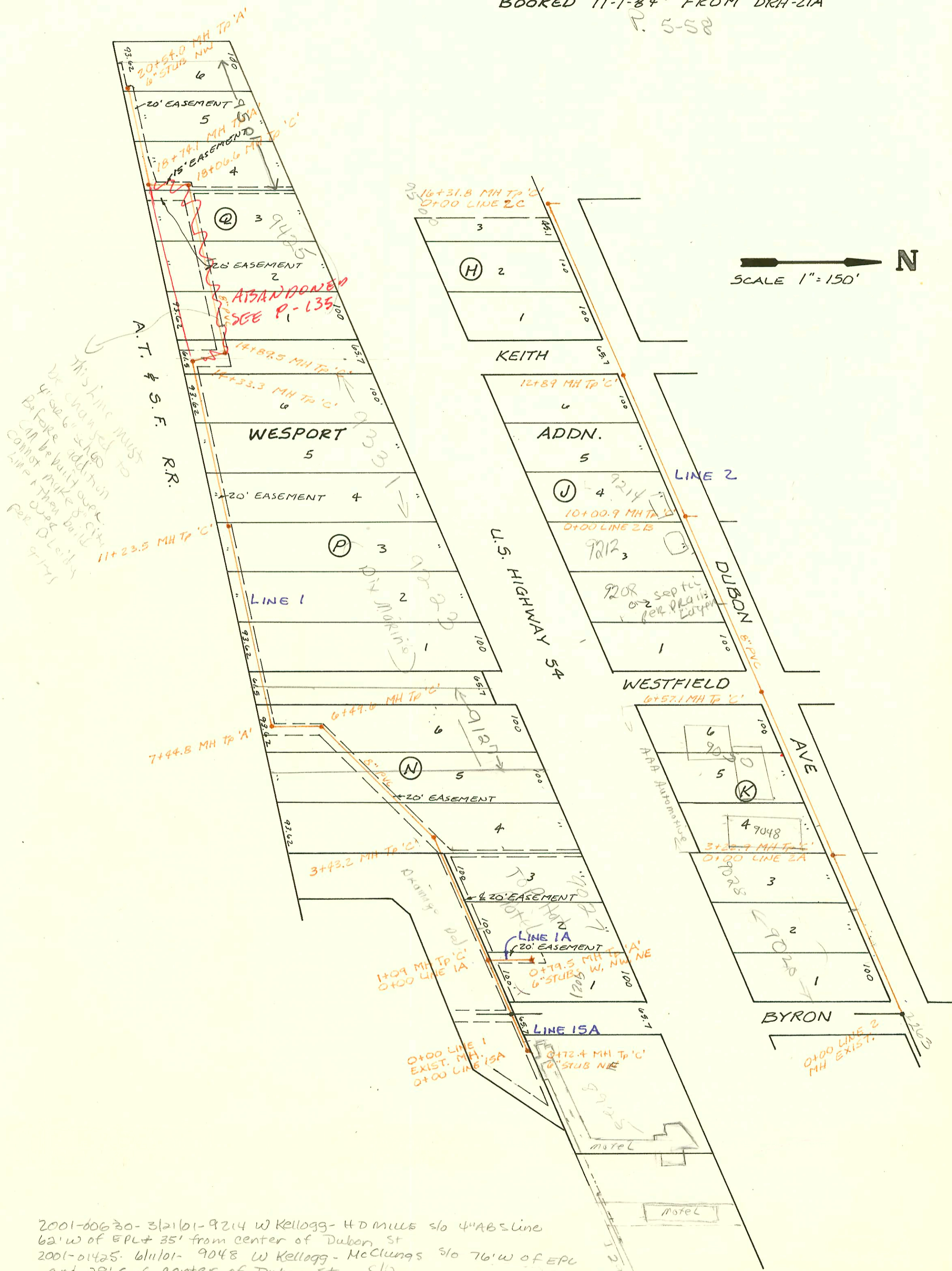


LAT 1, MAIN B, SW INTERCEPTOR  
468-76-245-81160-000-001  
BUILT BY: Utility Cont.  
BOOKED 11-1-84 FROM DRH-21A

P. 5-58



This line must be changed to 4" or 6" size. Be fore addition can be built over. Cannot make a build like a then build per O'Leary 9-1-75

2001-00630-312101-9214 W Kellogg - H D Mills s/o 4" ABS Line  
62' w of EPL + 35' from center of Dubon St  
2001-01425-61101-9048 W Kellogg - McClung's s/o 76' w of EPL  
and 28' S of center of Dubon St s/o  
SER 2001-02782 12-2600 9208 W Kellogg - H.D. Mills  
SER 2001-02773 12-2301 9212 W Kellogg - H.D. Mills

Drain layer advised these bldgs was on Septic - No Conn to City Sewer (6-21-01)

CONSTRUCTION RECORD							SERVICE RECORD					
STATION	ELEVATION		Depth	MANHOLE	4-INCH "Y" BRANCHES		No. of Permit		House Number		DATE OF PERMITS	
	Ground	Grade			North West	South East	North West	South East	North West	South East	North West	South East
LAT 1, MAIN 8, S.W.I												
LINE 1	0+00	133.52	117.60	15.9	0+00 EXIST.							
	1+00	129.7	117.96	11.7								
		130.54	117.99	12.6	1+09.0	1+67 6" RIS. N.	1518077		9027	conn		10-3-85
	2+00	131.0	118.48	12.5	0+00 L-1A	1+99 6" RIS. N.	818137		9027	conn		
	3+00	131.1	119.03	12.1								
		131.44	119.26	12.2	3+43.2							
	4+00	130.9	119.46	11.4								
	5+00	130.3	119.80	10.5			2002-03-78					
						5+61.17 TAP	23520		9121	Kellogg		11-13-89
	6+00	130.5	120.15	10.3								
		131.61	120.32	11.3	6+49.6							
	7+00	130.5	120.58	9.9								
		130.60	120.81	9.8	7+44							
	8+00	131.8	121.03	10.8								
						8+77 6" RIS. N.						
	9+00	134.4	121.41	13.0								
	10+00	135.3	121.79	13.5								
						10+75.5 TAP	24811		9223 B			2-16-87
	11+00	135.7	122.18	13.5			12821		Kellogg			7-2-84
		138.39	122.27	16.1	11+23.5							
	12+00	137.1	122.61	14.5								
						12+04 6" RIS. N.	10892		9331	Kellogg		5-10-84
	13+00	137.8	123.06	14.7								
						13+85 6" RIS. N.						
	14+00	136.8	123.51	13.3								
		136.51	123.66	12.9	14+33.3							
		137.92	124.02	13.9	14+89.5							
	15+00	137.6	124.07	13.5								
						15+24.5 TAP	14139		9425			
						15+18 6" RIS. N.						
	16+00	136.3	124.50	11.8								
						16+62.5 TAP	14137		9425			
	17+00	135.4	124.94	10.5								
	18+00	135.5	125.37	10.1								
		135.76	125.40	10.4	18+06.6	18+14.1 TAP	949017		9501			6-24-91
		135.43	125.78	9.7	18+74.1							
	19+00	135.0	125.92	9.1								
						4" DL TAP						
	20+00	132.1	126.45	5.6		4" SCH 40 18+78.6	99-01078		9501	WEST SWR		11-2-97
		131.59	126.74	4.9	20+54	6" STUB NW						
LINE 1A	0+00	130.54	119.95	10.6	0+00	4" SCH. 40 PVC 1+09 L-1	94-11716		9027			7-25-81
		134.84	121.94	12.9	0+79.5	6" STUB NW	10369		9027			12-17-86
LINE 2	0+00	134.02	122.04	12.0	0+00 EXIST.	6" STUB NW						
	1+00	134.6	122.74	11.9								
						Seal Off 1+12 6" RIS. S.	2002-03-78		9020			10-27-87
	2+00	135.5	123.44	12.1			19343		9020			10-27-87
						2+14 6" RIS. S.	2001-01-259		9020			5-23-87
	3+00	136.9	124.14	12.8			19466		9020			10-29-87
		138.00	124.42	13.7	0+00 L-2A	3+22.9						
	4+00	138.4	124.71	13.7								
						3+82 6" RIS. S.	2001-04-15		9048			6-1-91
						4+13.9 TAP	26069		9048			9-4-90
	5+00	139.2	125.09	4.1								
						Seal off at 5+35 6" RIS. S.	57451		9050			4-25-91
	6+00	139.3	125.46	13.8			10072		9050			1-30-84
		139.48	125.68	13.8	6+57.1							
	7+00	139.0	125.84	13.2								
						7+94 6" RIS. S.						
	8+00	139.8	126.23	13.6								
	9+00	140.0	126.61	13.4								
	10+00											
		140.48	127.00	13.5	10+00.9	Seal off 10+76.9	2001-00-60		9014			7-23-91
		127.07	127.07	13.5	0+00 L-2B	10+92 6" RIS. S.	11367		9014			7-5-84
	11+00	140.6	127.44	13.2								

LAT 1, MAIN 8, S.W.I  
LINE 1

LINE 1A  
LINE 2

Form #192-020 (July, 1981) #D Mills S/O 26' w of EPL + 23' S of NPL  
 10/19/81-9028 S/O w. Kellogg (Line was conn to Risk 214 and run to Bldg but not conn. at this time on this permit)  
 92-18634-7 8/6/92 9028 S/O w. Kellogg - David Lies - 4" PVC 40 Run from Bldg to capped line)  
 92-35864-7 11/3/92 - 8925 w. Kellogg (lower - 99-01080 - 11-2-94 9401 w. Kellogg (AKA 9425) - 99-01081 - 11-2-94 9401 w. Kellogg (AKA 9425) -