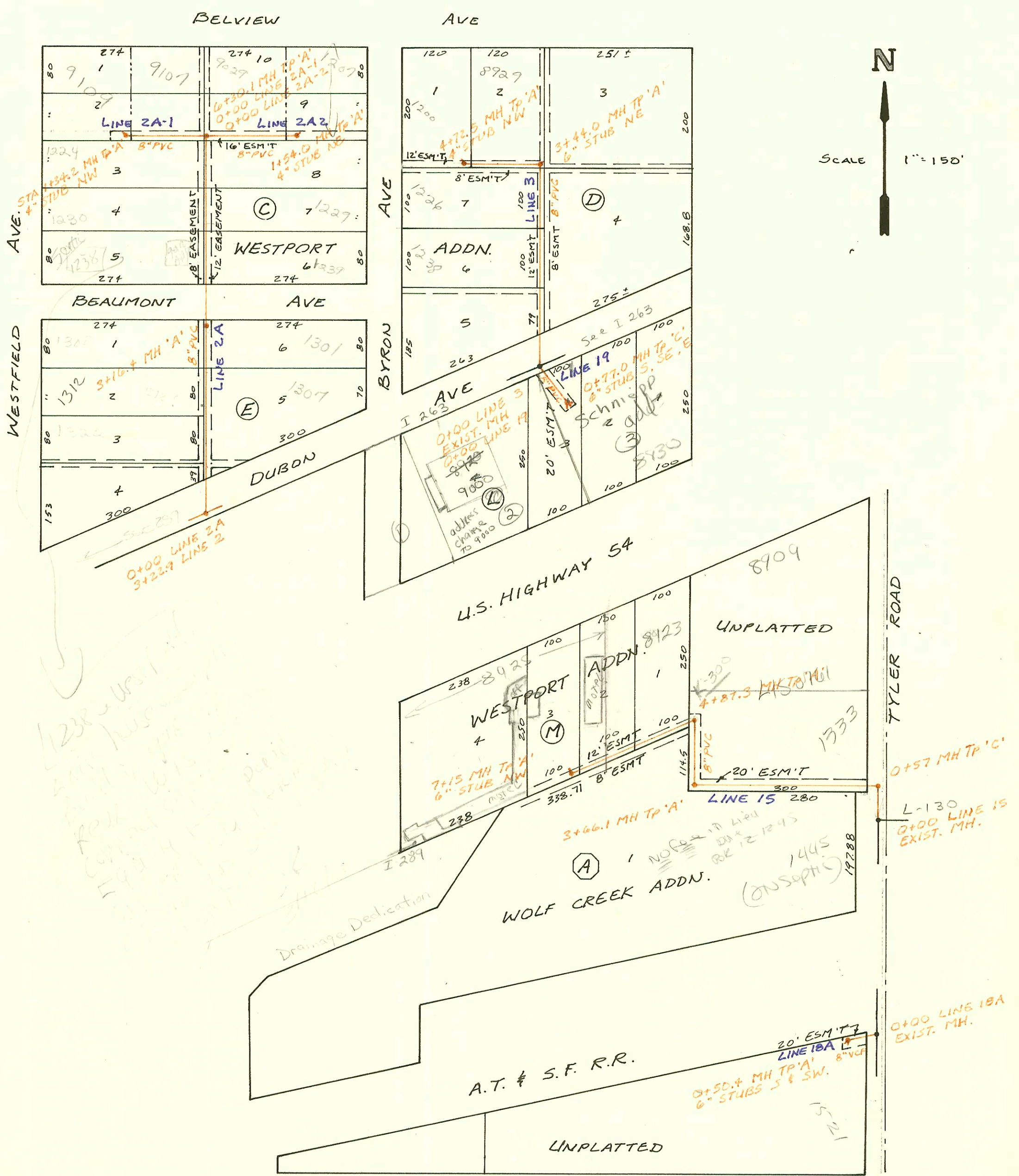


LAT 1, MAIN B, SW I
468-76-245-81160-000-000-001

5-58



Handwritten notes:
 1238 - U.S. 54
 5411 - BUS STOP
 1238 - U.S. 54
 5411 - BUS STOP
 1238 - U.S. 54
 5411 - BUS STOP
 1238 - U.S. 54
 5411 - BUS STOP

Handwritten note:
 Drainage Dedication

Handwritten note:
 (ONSOPHIC)

Handwritten note:
 15-21

CONSTRUCTION RECORD							SERVICE RECORD					
STATION	ELEVATION		Depth	MANHOLE	4-INCH "Y" BRANCHES		No. of Permit		House Number		DATE OF PERMITS	
	Ground	Grade			North West	South East	North West	South East	North West	South East	North West	South East
LAT 1, LINE 2 (CONT.)	MAIN 8, SWI (CONT.)											
	12+00	140.6	127.82	12.8								
		140.89	128.16	12.7	12+89.0							
	13+00	141.2	128.20	13.0								
	14+00	141.4	128.61	12.8								
	15+00	141.5	129.02	12.5								
	16+00	140.8	129.42	11.4								
		140.55	129.55	11.0	16+31.8 0+00 L-2C							
LINE 15A	0+00	133.52	123.96	9.4		4" ABS 40 0+54.4		22358617	8725 Kelllogg	(west Add)	10-13-82	
		133.12	124.32	8.8	0+72.4	6" STUB NW		10139	8725 Kelllogg		2-6-84	
LINE 15	0+00	140.78	130.64	10.1	0+00 EXIST.							
		140.72	130.97 IN	9.8	0+57							
	1+00	140.2	131.09	9.1								
	2+00	138.9	131.36	7.5		1+67.1 TAP		22919	1333 S. Tyler		4-14-89	
						2+15.1 TAP		22920	1333 S. Tyler		4-14-89	
	3+00	138.2	131.63	6.6								
		138.27	131.81	6.5	3+66.1							
	4+00	137.9	131.94	6.0								
		138.43	132.28	6.2	4+87.3	4+54.3 TAP		22161	8725 Kelllogg		12-08-88	
	5+00	137.8	132.33	5.5								
	6+00	136.8	132.72	4.1		6+03.0		22192	8725 Kelllogg		12-09-88	
	7+00	136.2	133.10	3.1		4" ABS 35 7+40		45507	8725 Kelllogg	(Add)	4-18-84	
		136.47	133.16	3.3	7+15.0	6" STUB NW		72-2202-7	8725 Kelllogg	(Add) Holiday Maxed	2-19-92	
LINE 18A	0+00	140.30	130.15	10.2	0+00 EXIST.							
		140.12	130.34	9.8	0+50.4	6" STUB SW		41847	1521 Tyler		8-23-84	
LINE 19	0+00	134.22	121.79	12.4	0+00 EXIST.							
		137.28	122.20	15.1	0+77.0	6" STUB E						
LINE 2A	0+00	138.00	127.50	10.5	0+00 3+22.9 L-2	6" STUB SE						
	1+00	138.3	128.61	9.7				14435	1322 Westfield		2-13-85	
								11095	1312 Westfield		6-5-84	
	2+00	139.2	129.73	9.5				10614	1307 Byron		4-12-84	
								21692	1301 S. Byron		10-14-88	
	3+00	140.3	130.84	9.5		3+12.4 TAP		10832	1300 Westfield		5-2-84	
		140.74	131.02 OUT 131.42 IN	9.7	3+16.4							
	4+00	141.8	133.10	8.7				11248	1239 Byron		6-20-84	
	5+00	143.9	135.11	8.8		5+05.4 TAP		16274	1230 Westfield	1229 Byron	5-16-86	1-23-90
	6+00	146.8	137.12	9.7								
		148.00	137.73	10.3	6+30.1 0+00 L-2A1 & L-2A2							
LINE 2A1	0+00	148.00	137.93	10.1	0+00 6+30.1 L-2A	0+37.0		10340	4107 Byron		2-28-84	
	1+00	132.0	140.43	8.4								
		149.84	141.28	8.6	1+34.2	4" STUB NW		11637	4109 Byron		8-1-84	
LINE 2A2	0+00	148.00	137.78	10.2	0+00 6+30.1 L-2A	0+12.0		10760	4039 Byron		4-20-84	
	1+00	146.8	138.80	8.0								
		147.81	139.35	8.5	1+54.0	4" STUB NE		26747	1201 Byron		12-13-90	
LINE 3	0+00	134.22	121.79	12.4	0+00 EXIST.							
	1+00	132.9	123.37	9.5				10886	1235 Byron		5-10-84	
	2+00	134.1	124.95	9.1								
	3+00	135.2	126.53	8.7								
		136.15	127.22 OUT 127.57 IN	8.9	3+44.0	6" STUB NE						
	4+00	137.4	128.59	8.8				11056	10946	8725 Byron	5-30-84	5-17-84
		139.62	129.91	9.7	4+72.5	4" STUB NW		10927	1200 Byron		8-15-84	