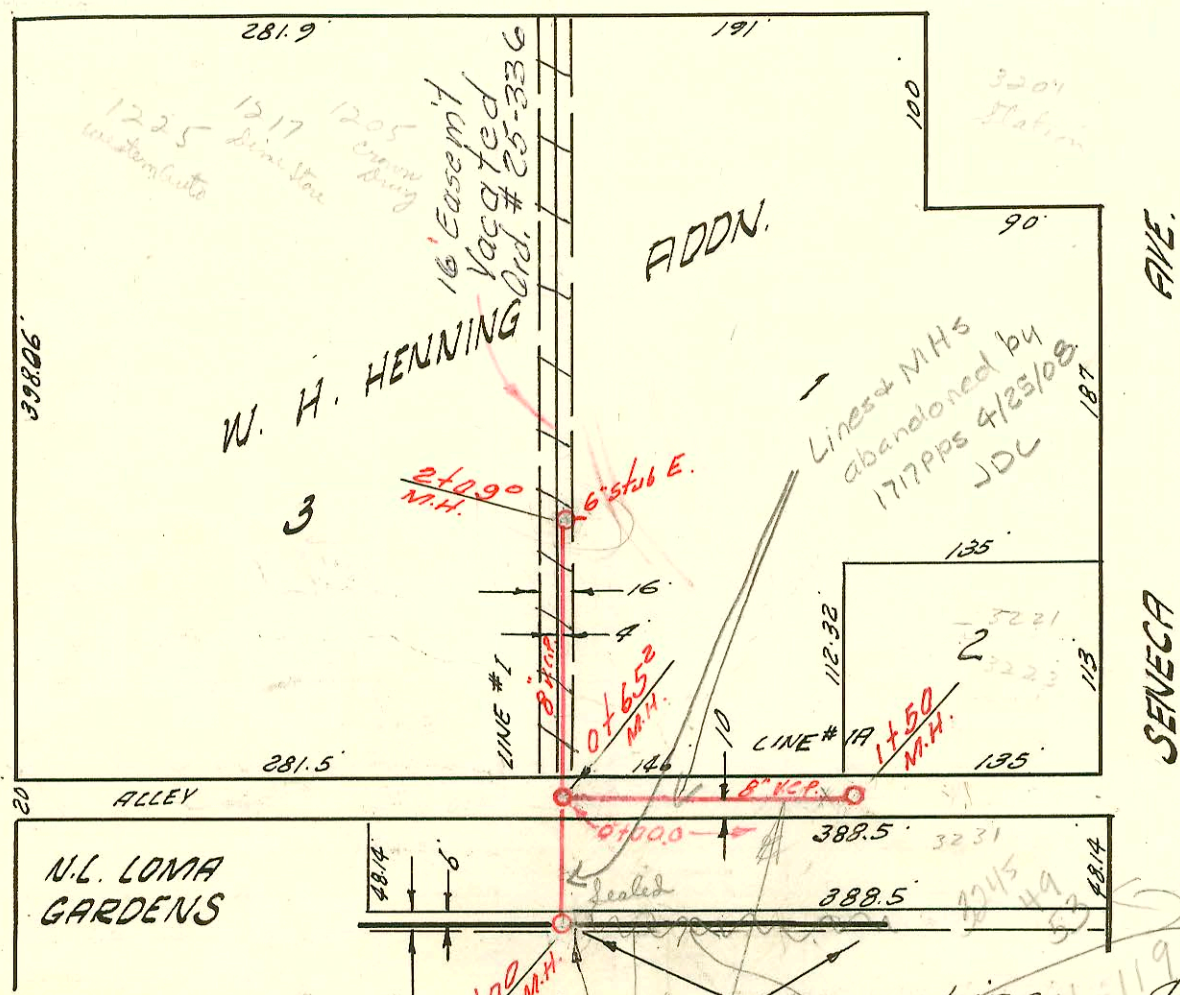


EXT. OF LAT. 41 D.C.S. #1 S.S. 12
 BK. NO. 59 PRIVATE JOB

31 ST ST.

See Re-Plat SO. 8-74

EXPOSITION AVE.



8-74



N.L. LOMA GARDENS

See H-119
 5-149

EXT. OF LAT. 23 SUB. 2 S.S. 22
 BK. NO. K-53 PRIVATE JOB.

No permit
 to be issued
 to this line in
 a Hot spot from
 Lot 1 Loma Landa
 2nd Addn.
 Brewer

CONSTRUCTION RECORD

SERVICE RECORD

STATION	ELEVATION		Depth	MANHOLE	4-INCH "Y" BRANCHES		No. of Permit		House Number		DATE OF PERMITS	
	Ground	Grade			North West	South East	North West	South East	North West	South East	North West	South East
EXT. OF LAT. 41 D.C.S. #1 S.S. #12 0+00	144.7	139.42	5.3	Existing M.H. 0+75 ³ 4" stub S.W. 8" stubs N45								
EXT. OF LAT. 23 SUB. 2 S.S. 22 LINE #10) 0+00	94.7	89.42	5.3	NEW. M.H. Abandoned w/1717 PPS M.H. Tap E. Tap								
1+00	94.6	89.55	5.0	0+65 ²								
2+00	94.7	89.62	5.1	4" SCH 40 - CO								
LINE #1A) 0+00	97.0	89.84	7.2	2+09 6" stub E. dk match								
1+00	94.6	89.65	4.9	Existing M.H.								
1+00	95.3	89.85	5.5	+41°								
	95.6	89.95	5.6	1+50° MH TAP Abandoned w/1717 PPS								

Property at this address is not sealed. This is a sewer seal for lateral only.

2001-01827- Thilo - 3211 Seneca - Roof Plug - 4" SCH 40 - 4" CO @ Bldg into Bldg sewer 2V45 - Connected film processing sink (sewer)

70 13945 (3205 Seneca 6-4-85 Henning 5/0 in state 2+09-0
 70 13946 (1111 W. 3rd St 6-4-85 Henning 5/0
 70 13944 (3221 Seneca 6-4-85 Henning 30' E of End of MH 1+500 and 44' N of that Point is 5/0
 70 13943 (3249 Seneca 6-4-85 Henning 5/0 30' from 44' E
 70 13942 (3265 " " " " " and 66.5' S of MH

12037 7-14-84 #12880 - Tap in M.H. #0+65 - 1205 W. 31st St. - Gray Bros. - 6-9-60 M.H. 2+09