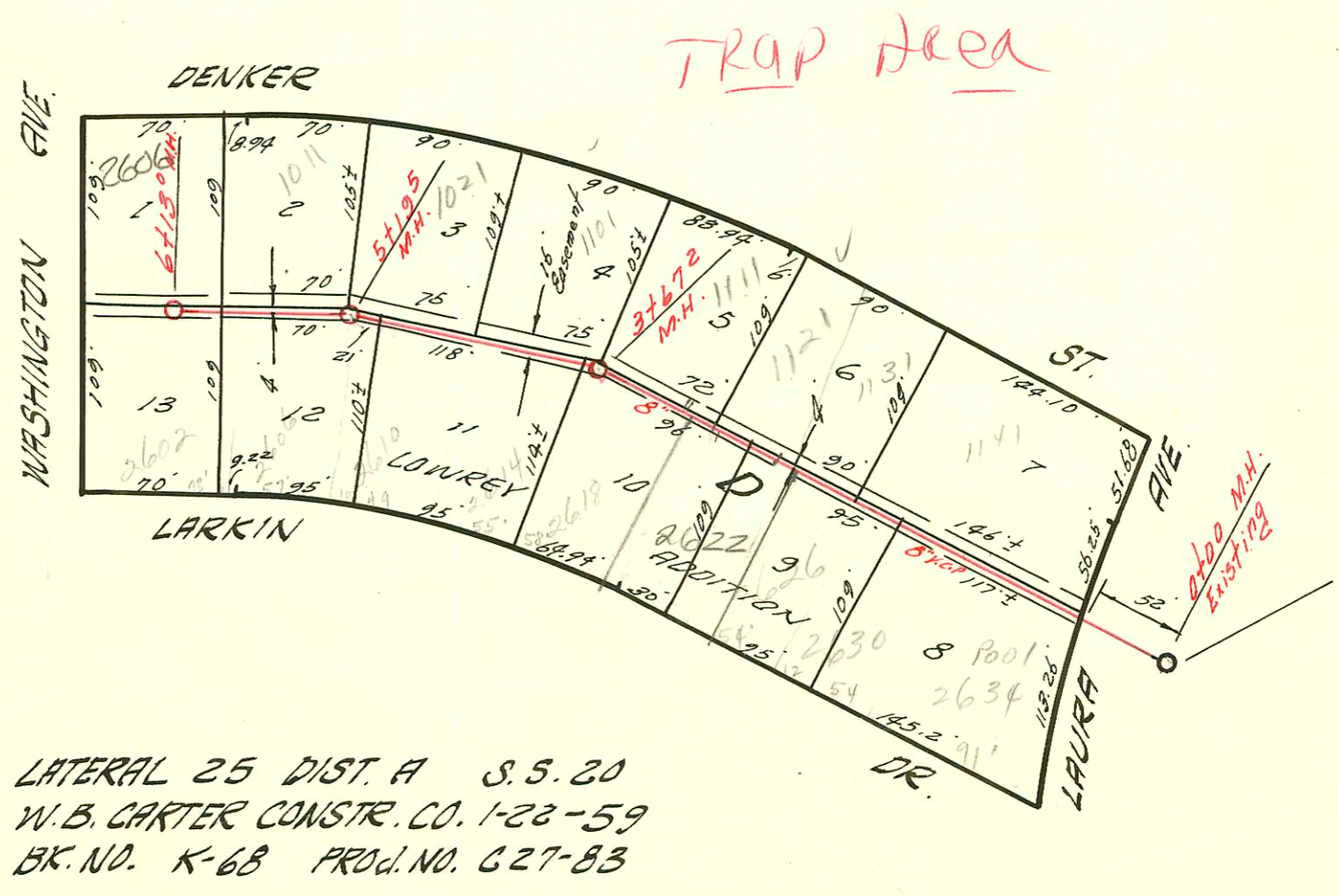


~~TRAP~~  
~~AREA~~

LATERAL 4 SUB. 15 S.S. 22  
MID-STATES CONSTR. CO. INC. 1-22-59  
BK. NO. K-45B PROJ. NO. C27-91



LATERAL 25 DIST. A S.S. 20  
W.B. CARTER CONSTR. CO. 1-22-59  
BK. NO. K-68 PROJ. NO. C27-83

### CONSTRUCTION RECORD

### SERVICE RECORD

STATION	ELEVATION		Depth	MANHOLE	4-INCH "Y" BRANCHES		No. of Permit		House Number		DATE OF PERMITS	
	Ground	Grade			North West	South East	North West	South East	North West	South East	North West	South East
0+00	111.5	103.40	8.1	Existing MH.								
1+00	111.8	103.60	8.2		+68°	+66°	9151		701			1-20-59
2+00	111.7	103.80	7.9		0+94.0 1+48.0 1+78.0 1+78.0	1+00.3 1+16.0 1+57.0 1+78.0	#90 15559 15558	#91	506 S. mt Carmel 512 mt Carmel 514	705 S. Custer		4-15-80 1-31-86 1-31-86
3+00	112.1	104.00	8.1		+88°	+26°	9203	C66502	602 mt Carmel 604 S. 610 S.	721-23 S. Custer		11-4-83 5-22-78
4+00	113.2	104.81	9.0	5+07 <sup>7</sup>	+83°	+81°	9260	C74110	610 S. 612 S. 614 S.	727 S. Custer		10-6-81 9-5-79
5+00	111.8	104.40	7.4		+80°	+41°	1285	C73870	616 S. mt Carmel	735 S. Custer		9-17-80 8-23-79
	111.8	104.40	7.4		+82°	+92°	16056	C73871	616 S. mt Carmel	735 S. Custer		8-23-79
					+413	+89°			616 S. mt Carmel	735 S. Custer		8-23-79
					+94°	+92°			616 S. mt Carmel	735 S. Custer		8-23-79
LAT. 25 DIST. A. S.S. 20												
0+00	94.3	90.77	3.5	Existing MH.	Y. No. +76 <sup>4</sup>	Y. 50 +78 <sup>4</sup>	12302	10702	1141 Denker	2634 Larkin		2-9-60 6-15-59
1+00	96.3	90.87	5.4									
2+00	96.4	90.97	5.4									
3+00	96.3	91.07	5.2		+23°	+24°	2000-02050		2600- Larkin			9-18-00
4+00	96.5	91.14	5.4	3+67 <sup>2</sup>	4" SCH 40 2+50 TAP 2+94°		99-01052		1111 Denker			10-30-99 2-25-59
5+00	96.5	91.17	5.3		+86°		9267		1101 Denker			2-25-59
6+00	96.6	91.29	5.3	5+19 <sup>5</sup>	+74 <sup>5</sup>	+04°	10826		1021 Denker	2614 Larkin		7-9-59 2-25-59
	96.7	91.27	5.4									
	96.6	91.29	5.3									
					+43 <sup>3</sup>	+26°	10824		1011 Denker	2606 Larkin		7-9-59
					+94 <sup>5</sup>	+92 <sup>5</sup>	2040	10823	1001 Denker	2606 Washington		1-20-59 7-9-59

#10703 6 on 8 wye 2630 Larkin - Al Henning 6-15-59 1+26  
 #10704 6 on 8 wye 2626 Larkin - Henning 6-16-59 2+42.5  
 #10813 6 on 8 wye 1121 Denker - Custer 7-7-59 2+78.2  
 #10825 6 on 8 wye 2610 Larkin - Al Henning 7-9-59 4+12.5  
 #10827 6 on 8 wye 2618 Larkin - Al Henning 7-9-59 3+60.2  
 #10828 6 on 8 wye 2622 Larkin - Al Henning 7-9-59 2+50.7  
 #12522 tap 502 S. mt. Carmel Kennedy Pkwy. 4-20-60 (0+39)