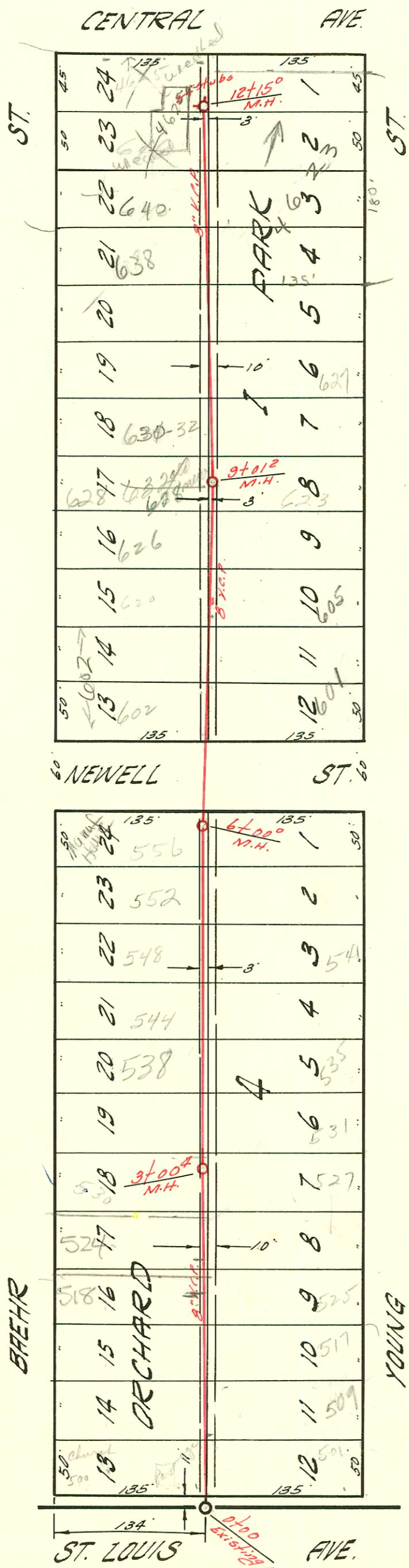


LATERAL 51 SUB. 5 S.S. 22  
 UTILITY CONTRACTORS INC. FEB. 2, '59  
 BK. NO. K-65 PROJ. NO. C28-46



Neighborhood  
 Row to C  
 for Residential  
 only

### CONSTRUCTION RECORD

### SERVICE RECORD

STATION	ELEVATION		Depth	MANHOLE	4-INCH "Y" BRANCHES		No. of Permit		House Number		DATE OF PERMITS	
	Ground	Grade			North West	South East	North West	South East	North West	South East	North West	South East
0+00	119.7	118.2		Existing MH.								
					0+56.3	+25°	14631	#10148	500 N. Baehr	501 N. Young		8-21-68
					0+72°	+70°	7374	#16903	504 N. Baehr	505 N. Young	9-1-61	9-20-66
						+89.5		C30443	507 N. Baehr	507 N. Young	2-24-59	4-4-63
1+00	120.1	112.22	7.9		1+31°	+29°	10117	#020176	506 N. Baehr	511 N. Young	4-17-59	7-20-70
					1+85.6	+83.6	2002		518 Baehr		3-21-02	
2+00	120.0	112.62	7.4		2+20°		222		524 Baehr		5-24-02	
						+52°	01966					
						+85°	B2960		530 N. Baehr		3-10-65	
3+00	120.1	113.02	7.1	3+00 <sup>4</sup>	3+21°			9396	531 N. Young			2-26-59
					3+80°	+91°	13100	9372	538 N. Baehr	535 N. Young	7-19-60	2-19-59
4+00	120.4	113.42	7.0		4+30.2	+28.2	C17816		544 N. Baehr		2-2-70	
					4+83.1	+81.1	C12817	10060	548 N. Baehr	541 N. Young	2-2-70	4-16-59
5+00	121.4	113.82	7.6		5+35.9	+33.9	C4804		552 N. Baehr		9-12-67	
					5+79.2	+69.2	C54637	13439	556 N. Baehr	545 N. Young	4-20-62	10-10-60
6+00	121.7	114.22	7.5	6+00°				C15727	601 N. Young			9-3-69
					7+29°		B3314		602 N. Baehr		5-3-65	
					7+87.5	+85.5	13695	10537	600 N. Baehr	605 N. Young	12-14-60	6-1-59
8+00	121.0	115.02	6.0		8+29.3				626 N. Baehr		2-28-61	
					8+55.5	+78°	13912	17402	632 N. Baehr	623 N. Young	4-11-60	7-16-63
9+00	120.7	115.42	5.3	9+01 <sup>2</sup>	9+40.4	+38.4	9305		634 N. Baehr		2-4-59	
					9+82.5							
10+00	121.0	115.82	5.2		10+49°	+30°	9997		636 N. Baehr		4-10-59	
					10+72°							
11+00	120.1	116.22	3.9		11+84.7		10+84.7	92367417	640 N. Baehr	4623 W. Central	12-8-45	10-14-92
					11+99.7		10+99.7		646 N. Baehr		2-4-59	
					11+39°		11+39°		646 N. Baehr		3-19-59	
					11+79°		11+77°					
12+00	121.4	116.62	4.8		12+54.6		12+54.6	1999-00850	4623 W. Central		10-5-99	
	121.4	116.69	4.7	12+15°	12+54.6		12+54.6	1999-00850	4623 W. Central		2-18-59	

W 76 4" SCH 40  
5+79.0

SAP 2000-01598 7-12-00  
ITWIN CO, 4" TRAP, 1 H22, 5V45

556 N Baehr (Mouein Manur House on foundation) - Right way plb -

#4214-630-632 N. Baehr - 9/30/21 - Bus Sett (9+01.23)

#9614 - Tap 527 N. Young - Al Henning 3-12-59 5+66.5

9927 Tap 627 N. Young L.H. Henning 4-2-59 9+26.2

#13312 Tap 638 N. Baehr - Bowers & Plog 9-7-60 (11+30)