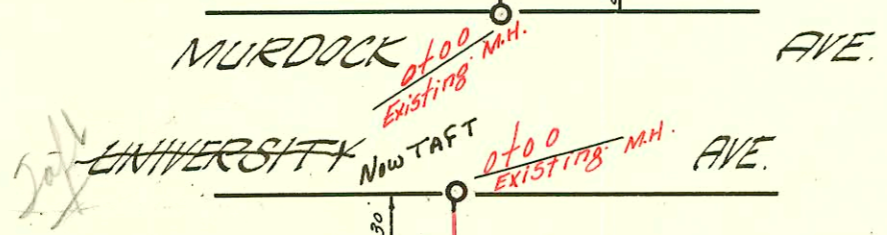
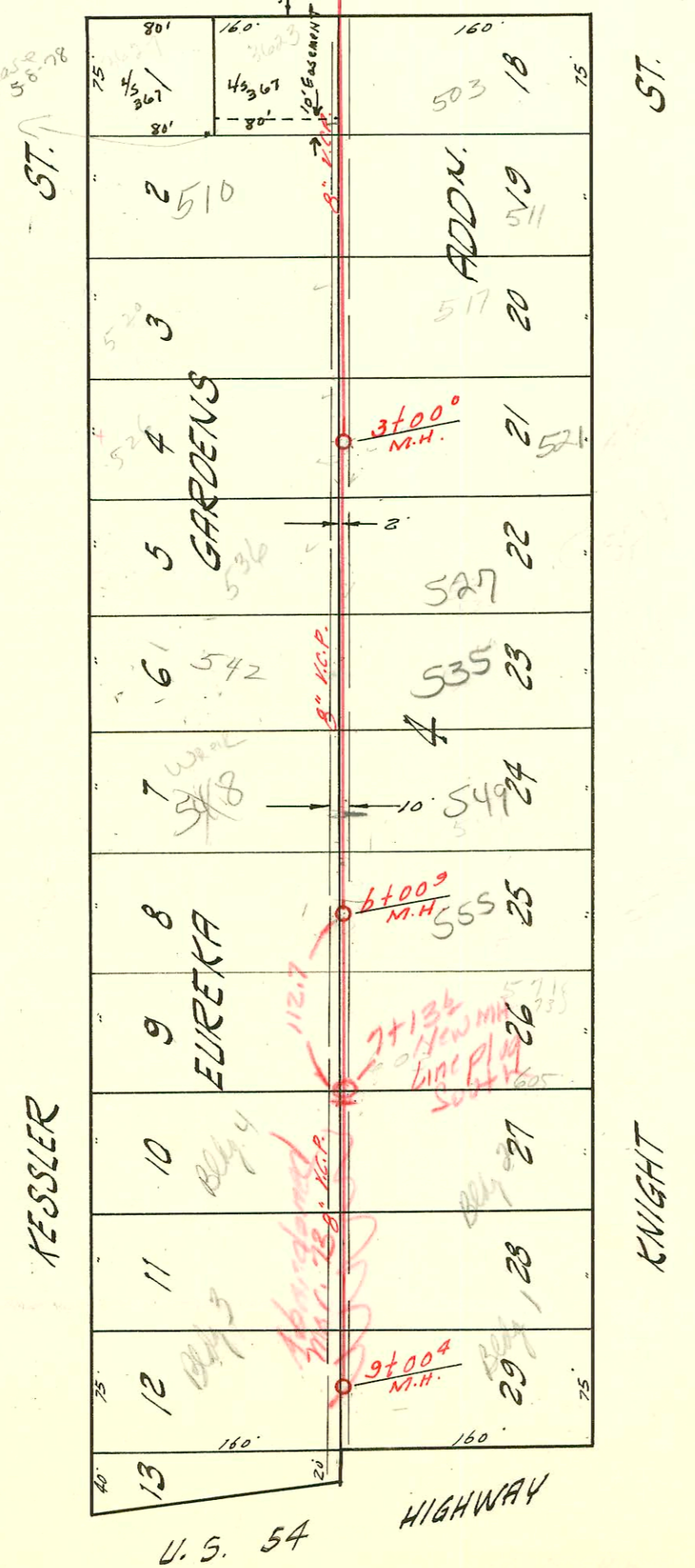


LAT. 90 SUB. 5 S.S. 22
 MID-STATES CONSTR. CO. INC. FEB. 2, '59
 BK. NO. K-47 PROJ. NO. C 28-114

756



Private easement agreement 5-8-78



LAT. 49 SUB. 5 S.S. 22
 UTILITY CONTR. INC FEB. 2, '59
 BK. NO. K-51 PROJ. NO. C28-40

New MH 7+136 Constr
 Vol. 73 Mid-States Constr Co
 Book SWS JK-1
 Easement vacated 2 of new MH



CONSTRUCTION RECORD						SERVICE RECORD						
STATION	ELEVATION		Depth	MANHOLE	4-INCH "Y" BRANCHES		No. of Permit		House Number		DATE OF PERMITS	
	Ground	Grade			North West	South East	North West	South East	North West	South East	North West	South East
0+00	123.3	114.25	8.8	Existing M.H.		+54°						
					+75°		14611		5550 20. M. S. S. S.		8-28-61	
1+00	124.6	114.85	9.7		+77°							
2+00	124.6	115.25	9.3		+61°	+59°	13557		810 N. Hoover		11-15-61	
					N/C 2178 4" PVC 40 2+78°	+52°	92429 9307	15628	N/C 814 Hoover 813 N. S. S. S.		3-26-62 2-4-59	5-11-62
3+00	125.0	115.65	9.3	2+99'								
					3+46°	3+44°	9317	9318	816 Hoover	819 Hoover	2-5-59	2-5-59
4+00	124.6	116.05	8.5									
					+48°	+46°	16810	9098	818 Hoover	825 Hoover	3-20-63	2-9-59
5+00	124.3	116.45	7.8									
					4" PVC 40 5+44°	5+46°	15637	14288	822 N. Hoover	See below 831 N. Hoover	2-24-60 5-16-62	6-13-61
6+00	124.6	116.85	7.7									
	124.8	116.91	7.9	6+19°	8" stub N.							
LATERAL 49 SUB. 5 S. S. 22												
0+00	115.4	104.23	11.2	Existing M.H.		+67°						
					+85°		11757		3623 Tap 300' P.P.	503 S. Knight	8-14-64	12-3-71
1+00	115.5	104.53	11.0		0+95' Tap	+21°	17686		510 S. Kessler	511 S. Knight	1-26-67	
						+19°	020422	029267			8-7-70	12-3-71
2+00	115.4	104.83	10.6			+06°	02947	0724	520 S. Kessler	517 S. Knight	3-10-65	1-23-64
						+66°	019696			521 S. Knight		6-15-70
3+00	114.8	105.13	9.7	3+00°		+08°	02946		526 S. Kessler		3-10-65	
					(no pipe here)	+39°						
4+00	114.2	105.43	8.8		Tap	+59°	04938		536 S. Kessler		9-21-67	11-4-62
						+30°		16359		527 S. Knight		5-18-60
					Tap	+28°		12803		533-35 S. Knight		
5+00	113.6	105.73	7.9		4+99°	+97°	03941		542 S. Kessler		7-20-72	
					seal off	+40°	02010241	016479		519 S. Knight	2-20-67	7-28-72
					5+70°	+38°	04730	0637	528 S. Knight		12-1-65	3-16-59
					5+71°	+69°		15676		520 S. Knight		5-25-62
					4" PVC 40	+45°		10959		525 S. Knight		7-20-59
6+00	112.3	106.05	6.3	6+00°		+41°		10960		567 S. Knight		7-20-59
						+77°		10961		571 S. Knight		7-20-59
7+00	112.3	106.33	6.0			+20°		9565		603 S. Knight		3-6-59
						+48°		14492		605 S. Knight		7-27-61
						+71°						
						+83°						
8+00	112.6	106.63	6.0	7+13.6				040461		3600 W. Kelley Clubhouse		8-8-73
								040460		3600 W. Kelley Clubhouse		8-8-73
								042276		3600 W. Kelley Clubhouse		11-14-73
								042277		3600 W. Kelley Clubhouse		11-14-73
9+00	113.7	106.93	6.8					043707		3600 W. Kelley Clubhouse		2-26-74

2000-00535- R- 2160-822 N Hoover - Wichita Exc - 4" PVC 40 - Partial Replacement Top 2/3 - 1 Turn @

#11607 - Tap - 915 N. S. S. S. - 10-2-59 (1+58)
 #14643 - Tap - 801 N. S. S. S. - 9-6-61 (0+53) R.
 # 92-17405-7. 549 S. Knight 8-3-92 (4" PVC 40 213 ft. S. of MH = 870-tap)