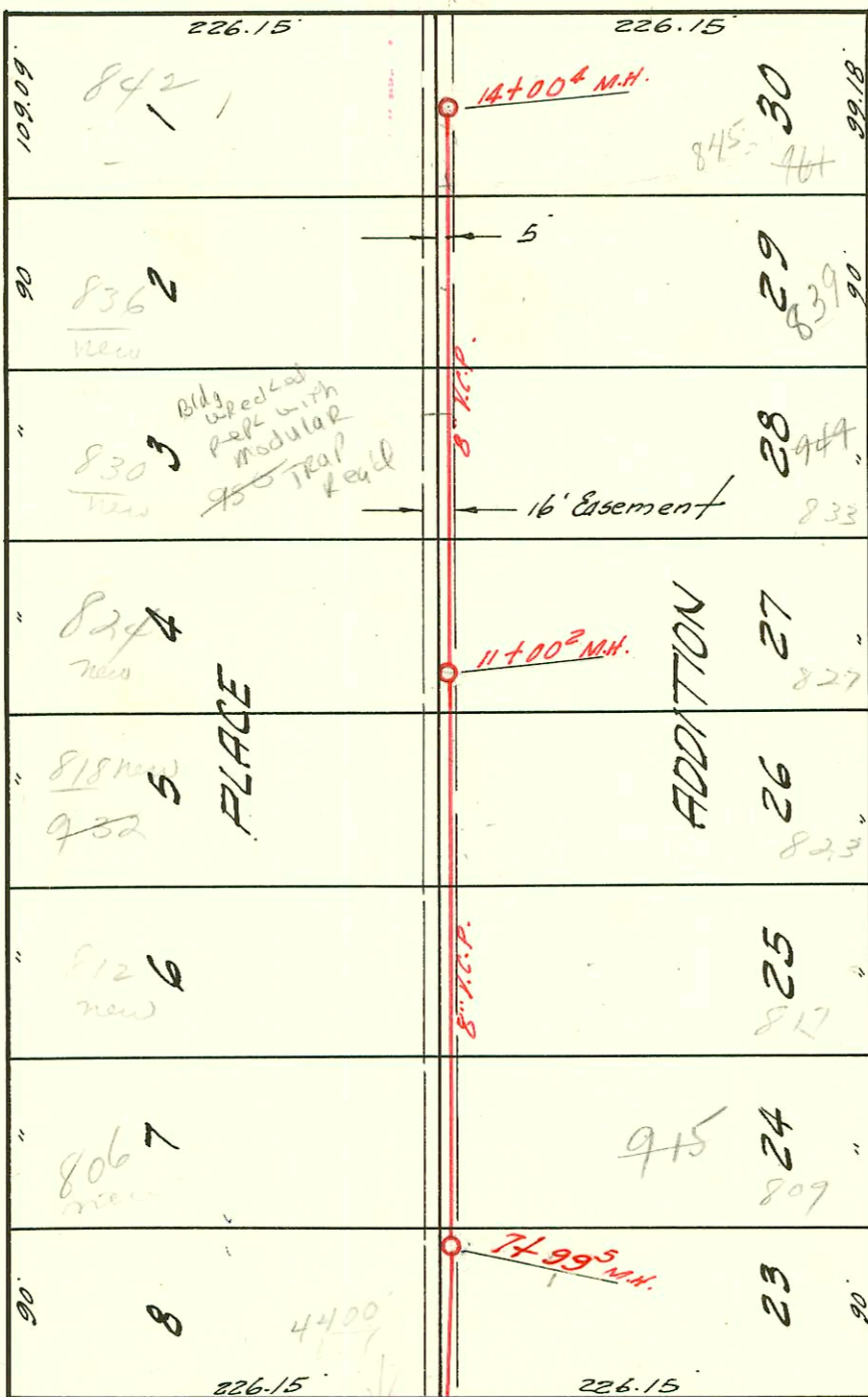


8TH

ST.

AVE.

ST.



MURDOCK

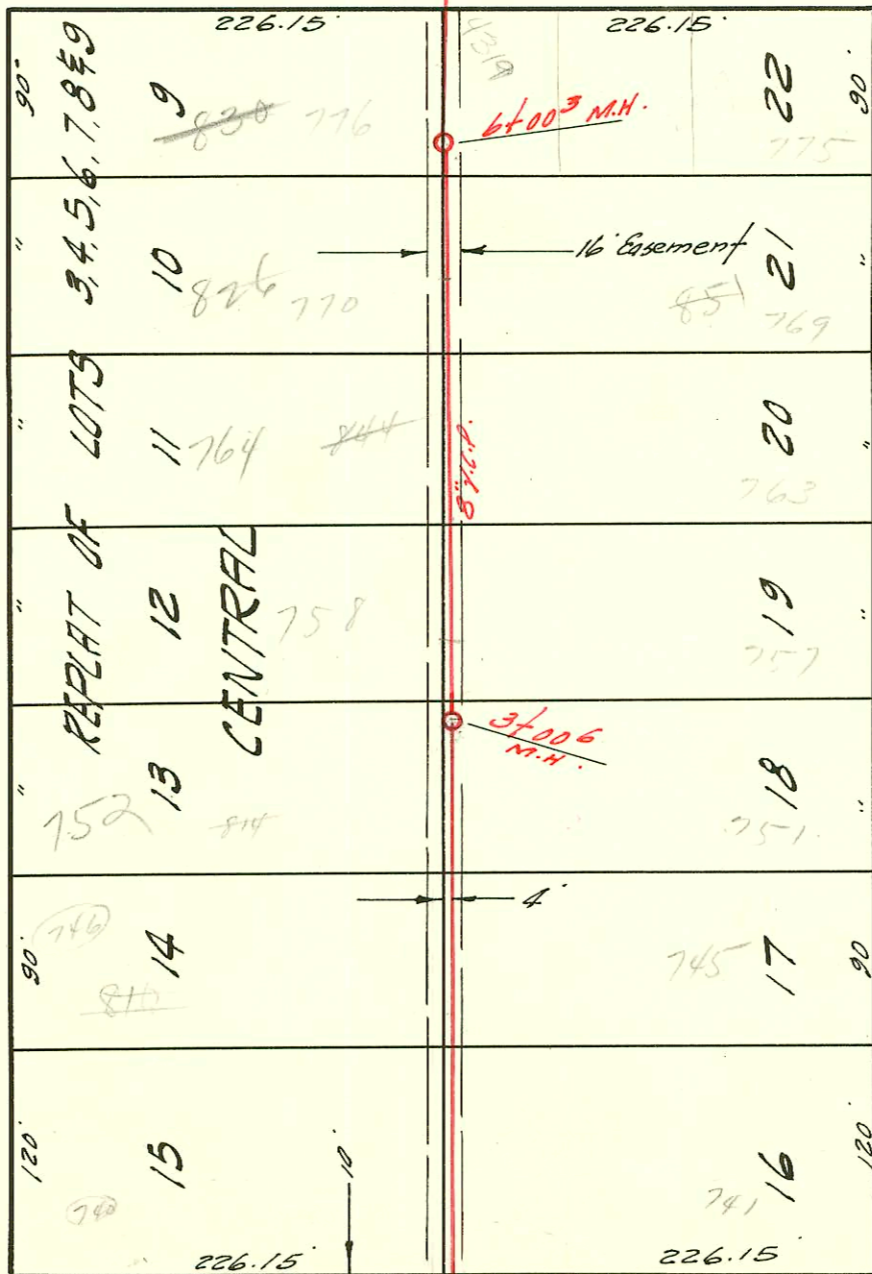
AVE

LATERAL 84 SUB. 5 S. S. 22
 MID-STATES CONSTR. CO. 2-9-59
 BK. NO. K-44 PROJ. NO. C28-102

N

DOUGHERTY

NEVADA



ELM

ST.

2" M.H. Existing

Street numbers changed - 1959

CONSTRUCTION RECORD						SERVICE RECORD						
STATION	ELEVATION		Depth	MANHOLE	4-INCH "Y" BRANCHES		No. of Permit		House Number		DATE OF PERMITS	
	Ground	Grade			North West	South East	North West	South East	North West	South East	North West	South East
0+00	121.1	112.81	8.3	Existing MH.	+76°	+74°	15916	16186	740 N. Dougherty	741 N. Nevada	7-17-62	9-27-62
1+00	121.0	113.01	8.0		+78°	+83°	11571				2-14-63	
2+00	121.0	113.21	7.8		+65°	+67°	12354	10175	752 N. Dougherty	823 N. Nevada	3-15-60	4-28-59
3+00	121.4	113.41	8.0	3+006	+62°	+64°	5352	10994	758 N. Dougherty	723 N. Nevada	1-12-65	7-27-59
4+00	120.6	113.61	7.0		+375	+355	14053	2562	764 N. Dougherty	763 N. Nevada	4-7-61	4-5-67
5+00	120.2	113.81	6.4		+305	+285	1239	1957	776 N. Dougherty	821 N. Nevada	2-20-59	4-6-59
6+00	121.3	114.01	7.3	6+003	+393	+373	1238	19348	830 N. Dougherty	775 N. Nevada	7-24-65	7-1-63
7+00	121.6	114.21	7.4		+939	+959	15699		4400 W. Muddick		9-2-69	
8+00	122.3	114.41	7.9	7+995	+770	+470	13760	9552	815 N. Dougherty	475 N. Nevada	1-12-61	3-4-59
9+00	122.7	114.61	8.1		+415	+395	16013	13780	812 N. Dougherty	817 N. Nevada	8-13-62	10-12-60
10+00	123.3	114.81	8.5		+253	+713	11663	13471	812 N. Dougherty	813 N. Nevada	10-22-59	10-24-60
11+00	123.1	115.01	8.1	11+002	+115°	+293	12438	13511	834 N. Dougherty	827 N. Nevada	4-7-60	10-27-60
12+00	123.1	115.21	7.9		+050	+210	13511	13511				
13+00	121.7	115.41	6.3		4" PVC 40 13+03.4 Tap 13+44.5	+210	93-30690-7 1173-17162-7 14-724	1173-17162-7 14-724	836 N. Dougherty	833 N. Nevada	12-9-93 7-1-93 9-25-61	12-7-77
14+00	121.5	115.61	5.9	14+004	13+95°	+180 +930	11077 14-2810-7 9550	11077 14-2810-7 9550	839 N. Dougherty	845 N. Nevada	8-11-59 3-7-59	

2001-01189 - 515101 - Padgett Ex - 770 Dougherty - 4" SCH 40 Donut in old wye - 2TWIN CO, 1V22, 2H22, 1V45

2001-00909 - 417101 - 776 Dougherty - Padgett Ex - 4" SCH 40 - Tied 4' from main 1TWIN CO, 1V22

830 N Dougherty - Exist house wrecked + Repl with Modular house - Exist 4" sch 40 service line temp. capped approx 4' W of SE corner of Garage under Permit SWR 2000 02761. Repl permit SWR 2000-02787 - Right way only - 4" SCH 40 - 4" Trap installed, 1TWIN CO, 2H45, Tied back into new line 30' Behind modular

2000-02761 - 10063 Tap 70 N Dougherty - 12-21-00 - 4" SCH 40 Fernco - Rep to within 10' of main 2TWIN CO, 2H45
93-17162-7 - 5/6 - 836 N Dougherty - 7/1/93 - Sealed off approx. five ft off clean-out towards nose